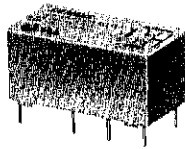


Alphanumeric Index

Series	Type	Page	Series	Type	Page
Application Note Ordering Information		237	OACM/ODCM	Slim Line Output Module	202
Agency Approval Information		4	P25	Definite Purpose Contactor	124
CB	Time Delay Relay	230	P30/P40	Definite Purpose Contactor	127
CD	Time Delay Relay	224	P31/P41	Definite Purpose Contactor	130
CG	Time Delay Relay	222	PM	Power Relay	119
CH	Time Delay Relay	228	PRD	Power Relay	121
CK	Time Delay Relay	226	R10/R10S/R10-T	General Purpose Relay	82
CL	Time Delay Relay	233	R50	PC Board Relay	54
CN1	Time Delay Relay	221	Relay Tree	Inside Front Cover	
CND	Din-Mount Time Delay Relay	213	Resistor Selection Guide for Time Delay Relays		212
CNM5	Time Delay Relay	219	RKA	PC Board Relay	73
CNS	Time Delay Relay	217	RKS	PC Board Relay	71
CNT	Time Delay Relay/Counter	215	† RT	PC Board Relay	69
Contact Forms & Materials		4	S86/S87	Power Relay	117
CR	Time Delay Relay	232	S89/S90	Impulse Relay	138
CS	Voltage Sensor	235	SDAS-01	Current Sensor	236
CU	Time Delay Relay	233	Selector Guide		5
IAC/IDC	Input Module	194	Socket Usage Guide		112
IACM/IDCM	Slim Line Input Module	202	Solid State Time Delay Terms and Definitions		211
§ IR10	General Purpose Relay	See R10	SSR	Solid State Relay	185
JWD	DIP Dry Reed Relay	39	SSRD	Dual Solid State Relay	188
JWS	SIP Dry Reed Relay	39	SSRQ	Quad Solid State Relay	191
K10	General Purpose Relay	92	SSRT	Solid State Relay	182
§ K20	General Purpose Relay	See T9A	T7C	PC Board Relay	65
KA	General Purpose Relay	105	† T7N	PC Board Relay	61
§ KAP	General Purpose Relay	See KRPA	T9A	PC Board Relay	77
KBP	Latching Relay	136	T70	PC Board Relay	63
KH/KHA	General Purpose Relay	88	T72	PC Board Relay	57
KHS	General Purpose Relay	88	T72J/K	Automotive Relay	145
§ KR	General Purpose Relay	See KA	T72M	Automotive Relay	149
KR-3-H	General Purpose Relay	107	T73	PC Board Relay	59
KR-E	General Purpose Relay	105	T75	PC Board Relay	67
KRP	General Purpose Relay	105	T77	PC Board Relay	55
KRPA	General Purpose Relay	105	T81	PC Board Relay	42
KU/KUP	General Purpose Relay	95	T83	PC Board Relay	See V23042
KUE/KUEP	General Purpose Relay	95	T84	PC Board Relay	53
KUGP	General Purpose Relay	95	T85	PC Board Relay	47
KUH/KUHP	General Purpose Relay	115	T90	PC Board Relay	75
KUIP	General Purpose Relay	95	T92	PC Board Relay	80
KUL	Latching Relay	134	Track Mounting System		110
KUM/KUMP	General Purpose Relay	95	V23026	PC Board Relay	40
KUP93	General Purpose Relay	103	† V23042	PC Board Relay	51
M6	Magnetic Circuit Breaker	32	† V23079	PC Board Relay	43
M9	Magnetic Circuit Breaker	32	† V23105	PC Board Relay	49
MDR	Rotary Relay	140	† V23106	PC Board Relay	45
OAC/ODC	Output Module	194	V2R	Automotive Relay	156



V23042 series

2 Pole, High Dielectric Polarized PC Board Relay

File E48393

File LR50227

Features

- 5A switching capacity.
- Meets FCC Part 68 isolation.
- Temperature compensated over operating range.
- No magnetic interference between adjacent relays.
- 2 Form C contact arrangement.
- Standard 0.1" x 0.3" grid spacing in a DIP configuration.
- Standard or sensitive DC coils through 48 volts.
- Well suited for audio communications circuits, logic and process control, vending machines and office automation applications.
- Immersion cleanable, plastic sealed case.

Contact Data

Arrangement: Bifurcated cross bar in 2 Form C (DPDT).

Material: Stationary Contacts: B101: Silver, gold plated.
B201: Palladium-silver, gold plated.

Movable Contacts: Palladium-silver.

Ratings: Max. Switching Voltage: 250VDC, 220VAC.

Max. Switching Power:

DC (resistive load): 50-150W (see Figure 1 - Limiting Curve).

AC (resistive load): 250VA.

Max. Switching Current: 5A, DC or AC.

Min. Switching Current: 0.1mA, 10 mVDC

Max. Carrying Current: 2A, DC or AC.

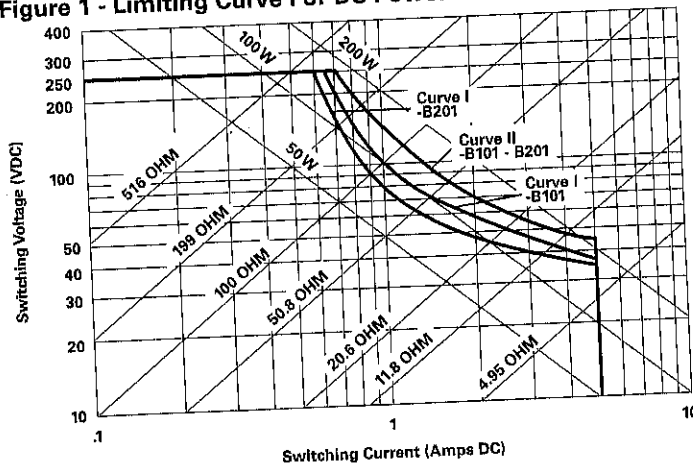
Expected Mechanical Life: 20 million operations.

Expected Electrical Life: 300,000 ops. @ 5.0A, 12VDC, resistive.
2.5 million ops. @ 1.0A, 24VDC, resistive.
100,000 ops. @ 1.0A, 250VAC, resistive.

Initial Contact Resistance: 50 milliohms, max., @ 10mA, 20mV.

Note: Verify in application for suitability to environmental and expected reliability levels.

Figure 1 - Limiting Curve For DC Power Load



Curve I: Arc extinguishes before transit period.
Curve II: The burning time of the arc must not exceed 10 ms for 1000 operations.

Initial Dielectric Strength

Between Open Contacts: 1,000V rms, 60 Hz.
1,500V FCC Part 68 surge test.

Between Contact Sets: 1,500V rms, 60 Hz.
1,500V FCC Part 68 surge test.

Contact to Coil: 1,000V rms, 60 Hz.; 1,500V FCC Part 68 surge test.
Between Dual Coils: 400V rms, 60 Hz.

Initial Insulation Resistance

Between Mutually Insulated Terminals: 10^9 ohms @ 500VDC.

Coil Data @ 20°C

Voltage: 3 through 48VDC.
Maximum Continuous Coil Power: 760 milliwatts.
Temperature Rise: 105°C per watt, typ.
Maximum Coil Temperature: 100°C.

Coil Data @ 20°C

Nom. Coil Voltage	Ultra-Sensitive ("150mW")					
	Non-Latching		Single Coil Latching		Dual Coil Latching	
	Coil Res. ±10% (ohms)	Nom. Coil Power (mW)	Coil Res. ±10% (ohms)	Nom. Coil Power (mW)	Coil Res. ±10% (ohms)	Nom. Coil Power (mW)
3	60	150	120	75	60	150
5	165	150	330	75	167	150
6	240	150	480	75	240	150
9	540	150	1080	75	540	150
12	960	150	1,920	75	960	150
15	1,500	150	3,000	75	1,500	150
24	3,840	150	7,680	75	3,840	150

Nom. Coil Voltage	Sensitive ("200mW")					
	Non-Latching		Single Coil Latching		Dual Coil Latching	
	Coil Res. ±10% (ohms)	Nom. Coil Power (mW)	Coil Res. ±10% (ohms)	Nom. Coil Power (mW)	Coil Res. ±10% (ohms)	Nom. Coil Power (mW)
3	45	200	90	100	45	200
5	125	200	250	100	125	200
6	180	200	360	100	180	200
9	405	200	810	100	375	200
12	720	200	1,440	100	720	200
15	1,125	200	2,200	100	1,125	200
24	2,880	200	4,000	144	2,040	280
48	11,520	200	N/A	N/A	N/A	N/A

Nom. Coil Voltage	Intermediate Sensitivity ("260mW")					
	Non-Latching		Single Coil Latching		Dual Coil Latching	
	Coil Res. ±10% (ohms)	Nom. Coil Power (mW)	Coil Res. ±10% (ohms)	Nom. Coil Power (mW)	Coil Res. ±10% (ohms)	Nom. Coil Power (mW)
3	36	250	N/A	N/A	N/A	N/A
5	95	260	N/A	N/A	N/A	N/A
6	135	260	N/A	N/A	N/A	N/A
9	300	270	N/A	N/A	N/A	N/A
12	600	240	N/A	N/A	N/A	N/A
15	860	260	N/A	N/A	N/A	N/A
24	2,210	260	N/A	N/A	N/A	N/A
48	6,330	360	N/A	N/A	N/A	N/A

Operate Data @ 20°C

Must Operate Voltage:

Intermediate sensitivity: 70% of nominal voltage or less.

Sensitive: 75% of nominal voltage or less.

Ultra-sensitive: 80% of nominal coil voltage or less.

Must Release Voltage (non-latching): 10% of nominal voltage or more.

Operate Time (Excluding Bounce): 5 ms, max. (3 ms, typical).

Release Time (Excluding Bounce): 3 ms, max. (2 ms, typical).

Reset Time (Latching): 5 ms, max. (3 ms, typical).

Bounce Time: 3 ms, max.

† At or from Nominal Coil Voltage

Environmental Data

Temperature Range: -40°C to +85°C (see Figure 2 - Temp. vs. Voltage).

Vibration: Operational: 50g from 10-500 Hz.; 10g from 500-2,000 Hz.

Shock: Operational: 50g at 11 ms 1/2 sinusoidal impulse.

Mechanical Data

Termination: Printed circuit terminals on 0.1" (2.54mm) centers.

Enclosure: Sealed plastic case.

Weight: 0.18 oz. (5g) approximately.

Ordering Information

Typical Part Number ▶

V23042

A2

00

1

B101

1. Basic Series:

V23042 = Miniature, PC board relay.

2. Functional Type:

Non-Latching	Dual Coil Latching	Single Coil Latching
A2	B2	C2

3. Coil Sensitivity:

00 = Non-latching, 260mW	20 = Dual coil latching, 200mW	10 = Single coil latching, 100mW
30 = Non-latching, 200mW	35 = Dual coil latching, 150mW	15 = Single coil latching, 75mW
60 = Non-latching, 160mW		

4. Coil Voltage:

1 = 5VDC	3 = 12VDC	5 = 24VDC	7 = 48VDC*
2 = 6VDC	4 = 15VDC	6 = 9VDC	8 = 3VDC

5. Contact Type:

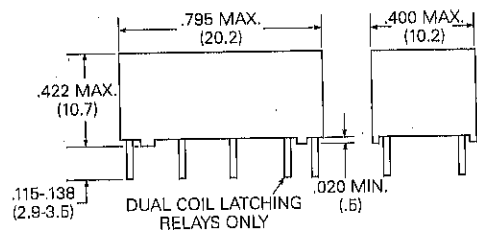
B10 = Bifurcated, 2-Form C, silver, gold-plated to palladium silver. (Standard stock)
B201 = Bifurcated, 2-Form C, palladium silver, gold-plated to palladium silver. (Special)

* Non-latching only.

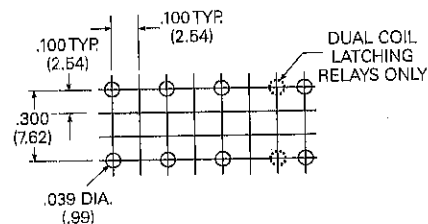
Stock Items – The following items are normally maintained in stock for immediate delivery.

V23042A2001B101	V23042A2007B101	V23042A2305B101	V23042A2603B101	V23042B2205B101	V23042B2355B101
V23042A2003B101	V23042A2301B101	V23042A2307B101	V23042B2201B101	V23042B2351B101	
V23042A2005B101	V23042A2303B101	V23042A2601B101	V23042B2203B101	V23042B2353B101	

Outline Dimensions



PC Board Layout (Bottom View)



Tolerance: ±.004 (.10)

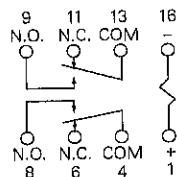
Coil Terminals: 0.015" (.38mm) dia. typical.

Contact Terminals: 0.020" (.5mm) x .010" (.25mm) typical.

(0.020" dimension is measured in the direction of the .795" dimension of the relay.)

Wiring Diagrams (Bottom Views)

Single Coil Non-Latching & Single Coil Latching



For non-latching versions, coil polarity must be observed.

For single coil latching versions, polarity shown results in "set" condition. Reverse polarity results in "reset" condition.

Diagram indicates de-energized position for non-latching and "reset" position for single coil latch.

Dual Coil Latching

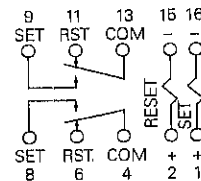


Diagram indicates relay in the "reset" position, with terminals 2 and 15 most recently energized. Energizing terminals 1 and 16 will transfer the contacts.