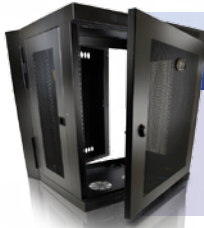


STACK THE RACK

WITH TRIPP LITE, YOUR ONE-STOP SHOP



OVER 130 MODELS

RACK ENCLOSURES

- + #1 wall-mount rack vendor
- + Competitive pricing with 5-year warranties
- + Custom solutions available
- 2U – 58U models available
- Wall-mount, open frame, colocation, extra wide & deep models



COOLING SOLUTIONS

- + #1 portable cooling vendor
- + Zero-maintenance designs
- 2K & 7K BTU rack-mount, 12K, 18K & 24K BTU portable & 33K BTU row-based units

NEW!



NETWORK SWITCHES

- + Exclusive! Select models feature built-in 12-outlet PDU
- Managed & unmanaged switches with up to 27 ports
- Select models feature PoE+ (Power over Ethernet)



OVER 1,700 SOLUTIONS

CABLES & CONNECTIVITY

- + #2 cable vendor with lifetime warranties and custom solutions
- + Bids start as low as \$500!
- FireWire, Fiber Optic, Cat5e/6
- SATA, SCSI, Patch Panels
- HDMI, VGA, DVI, DisplayPort™



OVER 200 MODELS

POWER DISTRIBUTION UNITS

- + #2 PDU vendor with a wide range of cost-effective models
- + Custom solutions available
- Basic, metered & networked (monitored & switched) models
- Patented ATS PDUs
- 0U, 1U & 2U designs



OVER 275 MODELS

UPS SYSTEMS

- + #2 UPS System vendor
- + Up to \$250,000 insurance and 3-year warranties
- 500VA – 20kVA capacities
- Line-interactive & true on-line rack-mount models (Single- and 3-Phase)
- Expandable runtime options



OVER 60 MODELS

KVM SWITCHES

- + #1 Console KVM vendor
- 4-, 8-, 16- & 32-port models
- 1U rack-mount & rack/console designs, with or without IP remote access



SOLUTIONS FOR EVERY NEED!

Network & Data Center | Government
Healthcare | Digital Signage | Education | Retail

SUBMIT BIDS!

Cables \$1K min. | \$2,500 Everything Else
\$10K to Register!

TRIPP·LITE

SEE REVERSE FOR TRIPP LITE'S TOP-SELLING DATA CENTER SOLUTIONS.

TRIPP LITE DATA CENTER SOLUTIONS

UPS SYSTEMS

Tripp Lite Model	Output Capacity	Outlets + Ports
SmartPro® Rack-Mount UPS Systems—Advanced protection for servers		
SMART500RT1U	500VA/300W	7+USB+DB9
SMART750RM1U	750VA/600W	6+USB+DB9
SMART750RMXL2U	750VA/600W	6+USB+DB9
SMART1000RM1U	1000VA/800W	6+USB+DB9
SMART1000RM2U	1000VA/800W	6+USB+DB9
SMART1000RMXL2U	1000VA/900W	8+USB+DB9
SMART1500RM2U	1500VA/1350W	8+USB+DB9
SMART1500RMXL2UA	1500VA/1350W	8+USB+DB9
SMART2200RM2U	2200VA/1920W	8+USB+DB9
SMART2200RMXL2U	2200VA/1920W	8+USB+DB9
SMART3000RM2U	3000VA/2250W	9+USB+DB9
SMART3000RMXL2U	3000VA/2880W	9+USB+DB9
SMART5000RT3U	5000VA/4000W	14+(2) USB+(2) DB9
SmartOnline® Rack-Mount UPS Systems—Ideal for mission-critical equipment		
SU750RTLX2U	750VA/600W	6+tel/Ethernet+USB+DB9
SU750RTLXCD2U	750VA/675W	6+tel/Ethernet+USB+DB9
SU1000RTLX2UA	1000VA/800W	6+tel/Ethernet+USB+DB9
SU1000RTLXCD2U	1000VA/900W	6+tel/Ethernet+USB+DB9
SU1500RTLX2UA	1500VA/1200W	6+tel/Ethernet+USB+DB9
SU1500RTLXCD2U	1500VA/1350W	6+tel/Ethernet+USB+DB9
SU2200RTLX2UA	2200VA/1600W	7+tel/Ethernet+USB+DB9
SU2200RTLXCD2U	2200VA/1800W	7+tel/DSL+USB+DB9
SU3000RTLX2U	3000VA/2500W	7+tel/Ethernet+USB+DB9
SU3000RTLX3U	3000VA/2400W	9+tel/Ethernet+USB+DB9
SU3000RTLX3UHV	3000VA/2400W	8+DB9
SU3000RTLXR3U	3000VA/2400W	9+tel/Ethernet+USB+DB9
SU3000RTLXCD3U	3000VA/2700W	9+tel/Ethernet+USB+DB9
SU5000RT3U	5000VA/3500W	16+(2) DB9
SU6000RT3U	6000VA/4200W	Hardwire+(2) DB9
SU6000RT4U	6000VA/4200W	12+USB+DB9
SU8000RT3U	8000VA/7200W	6+USB+DB9
SU10000RT3U	10,000VA/9000W	6+USB+(2) DB9
SU10KRT3UHV	10,000VA/9000W	Hardwire+USB+(2) DB9
SU12000RT4U	12,000VA/8400W	13+Hardwire+USB+DB9
SU16000RT4U	16,000VA/11,200W	13+Hardwire+USB+DB9

NETWORK SWITCHES

Tripp Lite Model	Description
NG8	8-Port Unmanaged Switch
NG8POE	8-Port Unmanaged Switch with PoE+
NGS8C2POE	8-Port Managed Switch with PoE+, 2 SFP Ports
NG16	16-Port Unmanaged Switch
NGS16C2	16-Port Managed Switch, 2 SFP Ports
NG24	24-Port Unmanaged Switch, 2 SFP Ports
NSS-G24D2P24	24-Port Managed Switch with PoE+, 2 SFP Ports, 12-Outlet PDU
NSU-G24C2	24-Port Ethernet Switch, 2 SFP Ports, 12-Outlet PDU

POWER DISTRIBUTION UNITS (PDUS)

Tripp Lite Model	Mounting	Nominal Voltage	Input Type/Plug	Outlet (Qty.) Type
Basic				
PDU1215	Horiz./Vert.	120V	5-15P	(13) 5-15R
PDU1220	Horiz./Vert.	120V	5-20P	(13) 5-15/20R
PDU1230	Horiz./Vert.	208/240V	L6-30P	(4) C19, (16) C13
PDU2430	Horiz./Vert.	120V	L5-30P	(24) 5-15R
PDUV30HV	Vertical	208/240V	L6-30P	(6) C19, (32) C13
Metered				
PDUMH15AT (ATS)	Horizontal	120V	2 x 5-15P	(8) 5-15R
PDUMH20AT (ATS)	Horizontal	120V	2 x 5-20P, L5-20P	(16) 5-15/20R
PDUMV30	Vertical	120V	L5-30P	(24) 5-15/20R
Monitored				
PDUMNH15	Horizontal	120V	5-15P	(8) 5-15R
PDUMNH30HV	Horizontal	208/240V	L6-30P	(4) C19, (12) C13
PDUMNV30	Vertical	120V	L5-30P	(24) 5-15/20R (2 20A breaker banks)
PDUMNV30HV2	Vertical	208/240V	L6-30P	(6) C19, (36) C13
Switched				
PDUMH15NET	Horizontal	120V	5-15P	(16) 5-15R
PDUMH20HVNET	Horizontal	200-240V	C20	(8) C13
PDUMH20HVATNET (ATS)	Horizontal	200-240V	2 x IEC-320-C20	(8) C13, (2) C19
PDUMH30HVNET	Horizontal	208/240V	L6-30P	(16) C13
PDUMH30HVATNET (ATS)	Horizontal	208/240V	2 x L6-30P	(16) C13, (2) C19, (1) L6-30R
PDUMV20NET	Vertical	120V	L5-20P with 5-20P adapter	(24) 5-15/20R
PDUMV20HVNET	Vertical	200-240V	L6-20P (detachable via C20 inlet)	(4) C19, (20) C13
PDUMV30NET	Vertical	120V	L5-30P	(24) 5-15/20R

RACK ENCLOSURES AND OPEN FRAME RACKS

Tripp Lite Model	Size	Type	Capacity
Enclosures			
SR12UB	12U	Extended Depth	1,000 lb.
SR18UB	18U	Extended Depth	1,000 lb.
SR25UB	25U	Standard	3,000 lb.
SR2400	42U	Value Series	2,400 lb.
SR42UB	42U	Standard	3,000 lb.
SR42UBDP	42U	Extended Depth	3,000 lb.
SR42UBWD	42U	Extended Width	3,000 lb.
SR45UB	45U	Standard	3,000 lb.
SR48UB	48U	Standard	3,000 lb.
Wall-Mount Enclosures			
SRWF5U	5U	Low-Profile	150 lb.
SRW6U	6U	Non-Swinging	200 lb.
SRW9U	9U	Non-Swinging	200 lb.
SRW10US	10U	Swinging	200 lb.
SRW12U	12U	Non-Swinging	200 lb.
SRW12US	12U	Swinging	200 lb.
SRW12U13	12U	Non-Swinging	200 lb.
SRW12US33	12U	Swinging, 33" Depth	250 lb.
SRW12USG	12U	Swinging, Glass Door	200 lb.
SRW18US	18U	Swinging, Heavy-Duty	250 lb.
SRW26US	26U	Swinging, Heavy-Duty	250 lb.
Open Frame Racks			
SR2POST	45U	2-Post Rack	800 lb.
SR2POST25	25U	2-Post Rack	800 lb.
SR4POST	45U	4-Post Rack	1,000 lb.
SR4POST13	13U	4-Post Rack	1,000 lb.
SR42UBEXPND	42U	4-Post Rack, Heavy-Duty	3,000 lb.

COOLING SOLUTIONS

Tripp Lite Model	Description
SRCOOL2KWM	Air-Conditioning Unit for Wall-Mount Enclosures, 2,000 BTU, 120V, 60Hz
SRCOOL7KRM	Rack-Mounted Air-Conditioning Unit, 7,000 BTU, 120V, 60Hz
SRCOOL12K	Portable Air-Conditioning Unit, 12,000 BTU, 120V, 60Hz
SRCOOL18K	Portable Air-Conditioning Unit, 18,000 BTU, 208/240V, 60Hz
SRCOOL24K	Portable Air-Conditioning Unit, 24,000 BTU, 208/240V, 60Hz
SRCOOL33K	Row-Based Air-Conditioning Unit, 33,000 BTU, 200-240V, 50/60Hz
SRCOOLNET	Web card for remote cooling management and monitoring of SRCOOL12K
SRCOOLNET2	Web card for remote cooling management and monitoring of SRCOOL7KRM and SRCOOL18K

CABLE MANAGEMENT ACCESSORIES

Tripp Lite Model	Description
SRCABLEDUCT1U	1U Horizontal Cable Manager (Finger duct with cover)
SRCABLEDUCT1UHD	1U Horizontal Cable Manager (Finger duct with dual-hinged cover)
SRCABLELADDER	10 ft. x 1 ft. Cable Ladder (Includes two sections; requires SRCABLETRAY for connection to enclosure; requires SRLADDERATTACH for connection to wall or open frame rack)
SRCABLETRAY	Roof-Mounted Cable Trough (Routes cable and separates power/data cables)
SRCABLEVRT3	High-Capacity Vertical Cable Manager (3 in. wide, double finger duct with cover, toolless mounting)

KVM CONSOLES AND SWITCHES

Tripp Lite Model	Description
1U Rack-Mount Console KVM Switches	
B020-008-17	8-Port w/17" LCD
B020-016-17	16-Port w/17" LCD
B020-016-17-IP	16-Port w/17" LCD and IP Remote Access
B020-U08-19-IP	8-Port w/19" LCD and IP Remote Access
B020-U08-19-K	8-Port w/19" LCD and 8 PS2/USB Combo Cables
B020-U16-19-K	16-Port w/19" LCD and 8 PS2/USB Combo Cables
B040-008-19	8-Port w/19" LCD
B040-016-19	16-Port w/19" LCD
B070-008-19	8-Port w/19" LCD
B070-016-19	16-Port w/19" LCD
B070-016-19-IP	16-Port w/19" LCD and IP Remote Access
1U Rack-Mount Consoles	
B021-000-17	w/17" LCD
B021-000-19	w/19" LCD
1U Rack-Mount Serial Console Server	
B096-016	IP Remote Access
1U Rack-Mount Cat5 KVM Switches	
B072-008-1	8-Port
B072-016-1	16-Port
B072-016-IP4	16-Port with IP Remote Access
B072-032-IP4	32-Port with IP Remote Access
B064-032-04-IPG	32-Port with IP Remote Access
1U Rack-Mount Basic USB/PS2 KVM Switches	
B022-U08-IP	8-Port with IP Remote Access
B042-004	4-Port w/On-Screen Display
B042-008	8-Port w/On-Screen Display
B042-016	16-Port w/On-Screen Display

CAT5E/6 CABLES

Length	Gray	Blue
3 ft.	N002-003-GY	N002-003-BL
5 ft.	N002-005-GY	N002-005-BL
7 ft.	N002-007-GY	N002-007-BL
10 ft.	N002-010-GY	N002-010-BL
14 ft.	N002-014-GY	N002-014-BL
25 ft.	N002-025-GY	N002-025-BL
50 ft.	N002-050-GY	N002-050-BL
100 ft.	N002-100-GY	N002-100-BL
Length	Black	Green
3 ft.	N002-003-BK	N002-003-GN
5 ft.	N002-005-BK	N002-005-GN
7 ft.	N002-007-BK	N002-007-GN
10 ft.	N002-010-BK	N002-010-GN
14 ft.	N002-014-BK	N002-014-GN
25 ft.	N002-025-BK	N002-025-GN
50 ft.	N002-050-BK	Inquire
100 ft.	N002-100-BK	Inquire

CAT6 CABLES

Length	Black	Blue
3 ft.	N201-003-BK	N201-003-BL
7 ft.	N201-007-BK	N201-007-BL
10 ft.	N201-010-BK	N201-010-BL
14 ft.	N201-014-BK	N201-014-BL
25 ft.	N201-025-BK	N201-025-BL
50 ft.	N201-050-BK	N201-050-BL
100 ft.	N201-100-BK	N201-100-BL

With over 4,000 items in stock and ready to ship, we have the solution for any application.

For more information, contact your Tripp Lite Representative

