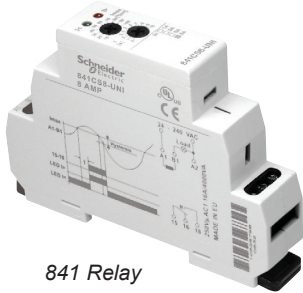


Description

Legacy Time Delay and Sensor Relays

841 Series
SPDT, 15 A



841 Relay

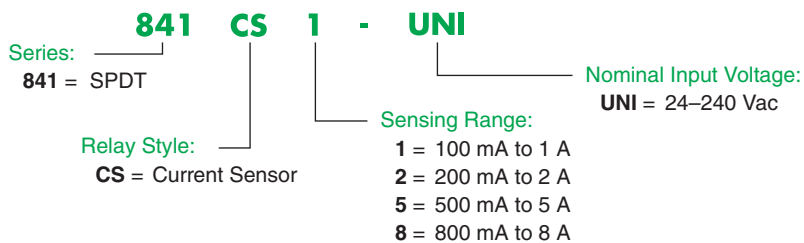
Description

This current sensing relay allows you to monitor the current of one circuit (1–8 A) and switch another circuit in case of an overcurrent condition. The relays are modular and finger protected (according to IEC 60529 IP rating).

Feature	Benefit
Current-sensing adjustment knob	Sense from 10–100% of the rated sensing current
Input/output terminals	Accepts wire up to 14 AWG
Solid-state circuitry	Used for precise sensing and timing control
Input/output indication	Shows status at a glance
DIN rail mounting capability	Mounts directly on a DIN Rail
Narrow width: 17.5 mm (0.69 in.)	Ideal for tight spaces
Wide input range	Works with common AC voltages

Input Voltage	Timing Range	Contact Configuration	Output (A)	Sensing Current Range (AC)	Standard Part Number
24–240 Vac	100 ms to 10 s	SPDT	15	100 mA to 1 A	841CS1-UNI
				200 mA to 2 A	841CS2-UNI
				500 mA to 5 A	841CS5-UNI
				800 mA to 8 A	841CS8-UNI

Part Number Explanation



Legacy Time Delay and Sensor Relays

841 Series
SPDT, 15 A

Specifications

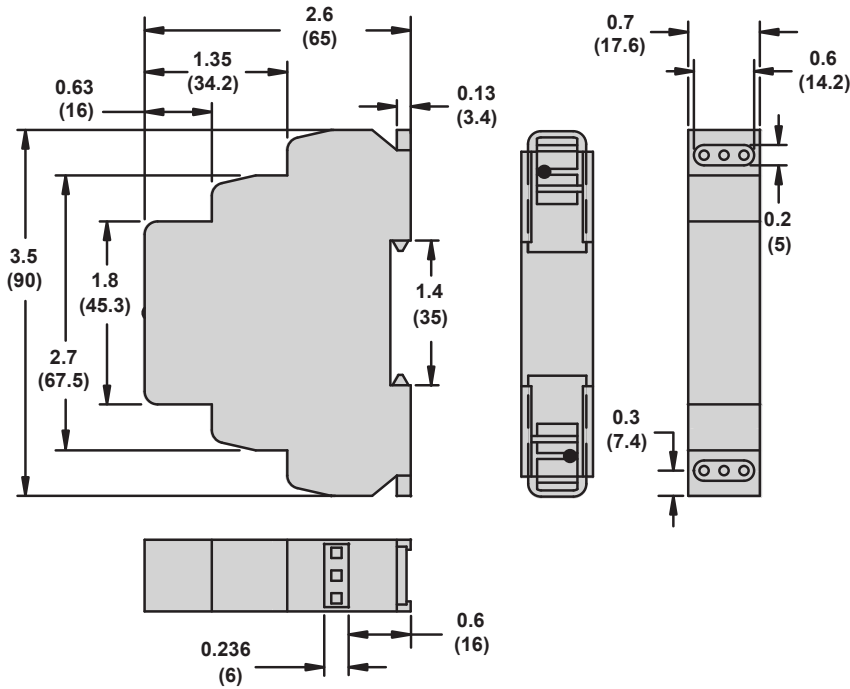
Part Number	841CS1-UNI	841CS2-UNI	841CS5-UNI	841CS8-UNI
Input Characteristics				
Input Voltage Range	24–240 Vac	24–240 Vac	24–240 Vac	24–240 Vac
Maximum Power Consumption	1.2 VA	1.2 VA	1.2 VA	1.2 VA
Output Characteristics				
Contact Configuration	SPDT	SPDT	SPDT	SPDT
Output Current Rating	15 A	15 A	15 A	15 A
Contact Material	Silver alloy	Silver alloy	Silver alloy	Silver alloy
Switching Capability	15 A @ 240 Vac, 50/60 Hz, 24 Vdc 1/2 hp @ 120 Vac 1 hp @ 240 Vac Pilot duty B300	15 A @ 240 Vac, 50/60 Hz, 24 Vdc 1/2 hp @ 120 Vac 1 hp @ 240 Vac Pilot duty B300	15 A @ 240 Vac, 50/60 Hz, 24 Vdc 1/2 hp @ 120 Vac 1 hp @ 240 Vac Pilot duty B300	15 A @ 240 Vac, 50/60 Hz, 24 Vdc 1/2 hp @ 120 Vac 1 hp @ 240 Vac Pilot duty B300
Minimum Switching Requirement	100 mA at 5 Vac/Vdc	100 mA at 5 Vac/Vdc	100 mA at 5 Vac/Vdc	100 mA at 5 Vac/Vdc
Timing/Sensing Characteristics				
Time Scales	1	1	1	1
Time Ranges	0–10 s	0–10 s	0–10 s	0–10 s
Tolerance	5% of mechanical setting	5% of mechanical setting	5% of mechanical setting	5% of mechanical setting
Repeatability at Constant Voltage and Temperature	1%	1%	1%	1%
Sensing Range	100 mA to 1 A	200 mA to 2 A	500 mA to 5 A	800 mA to 8 A
General Characteristics				
Electrical Life (Operations at Rated Current) (1)	70,000 operations			
Mechanical Life (Unpowered) (1)	10,000,000 operations			
Dielectric Strength (Input to Contacts)	2500 Vac			
Dielectric Strength (Between Open Contacts)	1600 Vac			
Storage Temperature Range	–30 to +70 °C (–22 to +158 °F)			
Operating Temperature Range	–20 to +55 °C (–4 to +131 °F)			
Terminal Wire Capacity (Input and Output)	14 AWG (2.1 mm ²) maximum			
Terminal Screw Torque	7.1 lb-in (0.8 N•m) maximum			
Weight	60 g (2.12 oz)			
Input Indication	Green LED			
Output Indication (Blinking = Timing; On = Energized)	Red LED			
Enclosure Rating (according to IEC 60529 IP rating)	IP20			
Approvals	cULus (File: E234203, CCN: NKCR, NKCR7), CE 61810-1, RoHS			

(1) Actual product life varies based on electrical load, duty cycle, application, and environmental conditions.

Legacy Time Delay and Sensor Relays

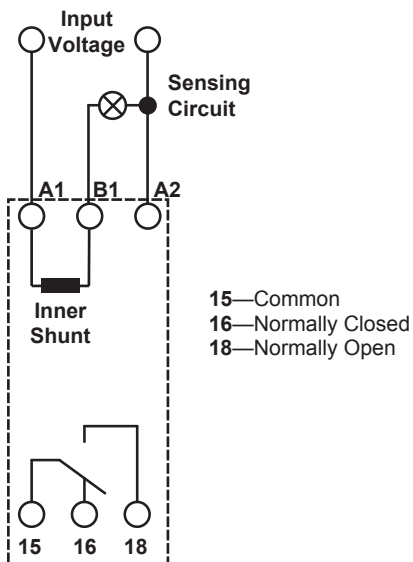
841 Series
SPDT, 15 A

Dimensions—in. (mm)

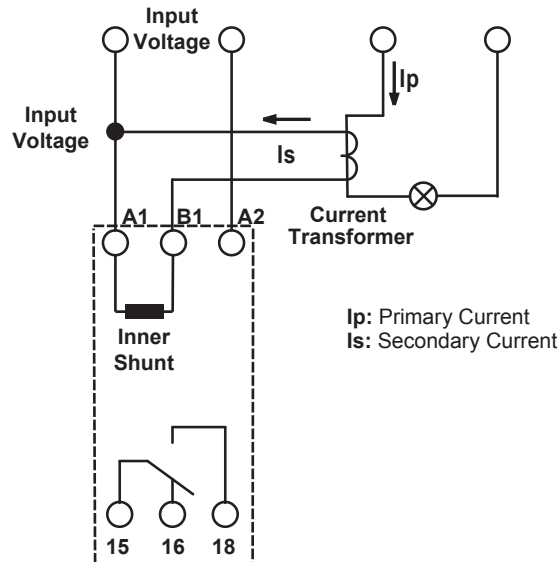


Wiring Diagram

Direct current sensing



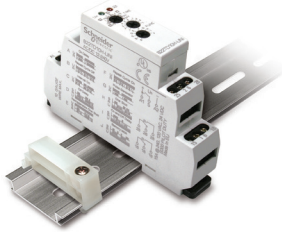
Current sensing through a current transformer



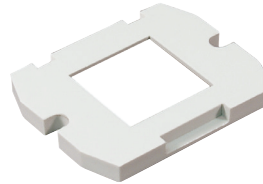
Legacy Time Delay and Sensor Relays

800 Series Accessories

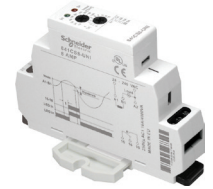
16-700DIN DIN Rail,
16-DCLIP-1 DIN Rail
End Clip



Shown with an 821 Relay



16-788C1 Panel Adapter



Shown with an 831 Relay

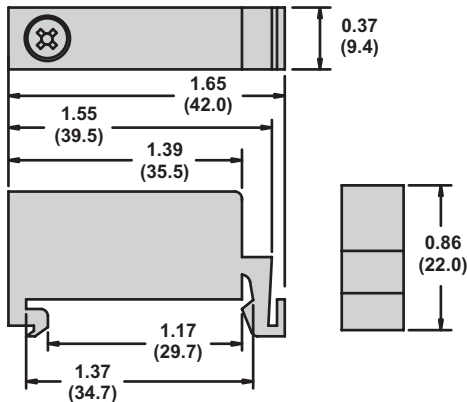
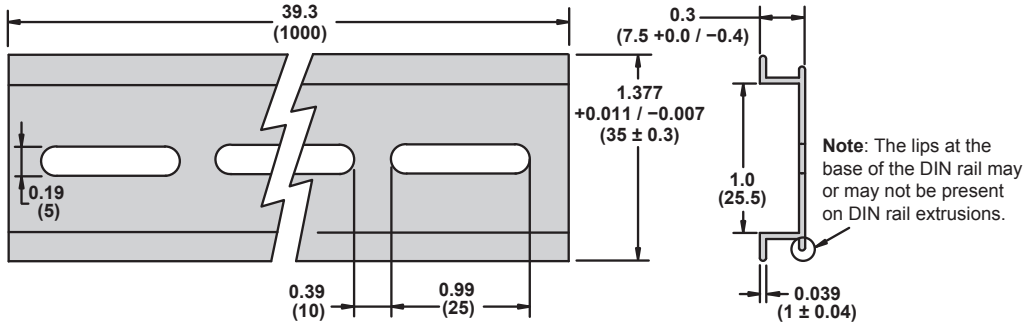
Description

The 16-700DIN DIN rail provides for quick removal and installation of most sockets, while the 16-788C1 panel adapter provides a panel mounting option.

Description	Function	For Use With Relays	Packaging Quantities	Standard Part Number
Metal DIN Rail 39.3 in. (1 m).	Quick installation and removal	821, 822, 831, 841	10	16-700DIN
DIN Rail End Clip	Holds sockets firmly in place on the DIN rail	—		16-DCLIP-1
Panel Adapter	Provides additional panel mounting option	821, 822, 831, 841		16-788C1

Dimensions—in. (mm)

16-700DIN Metal DIN Rail



16-788C1 Panel Adapter

