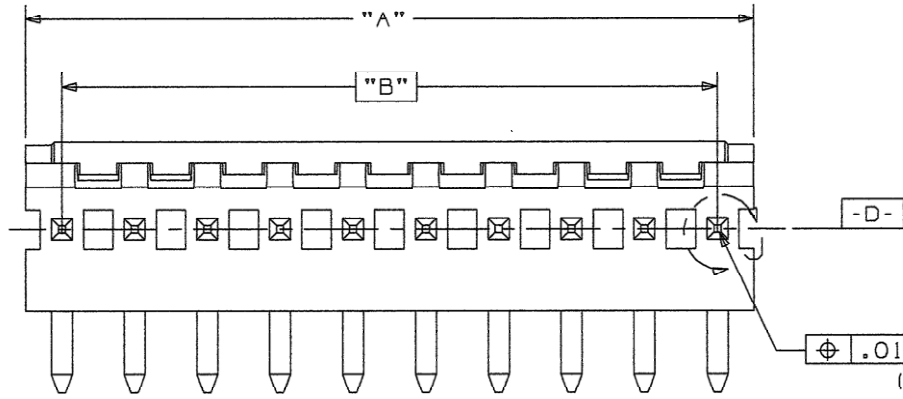
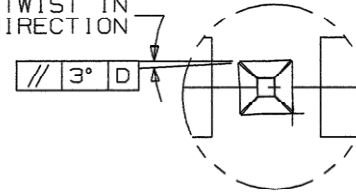


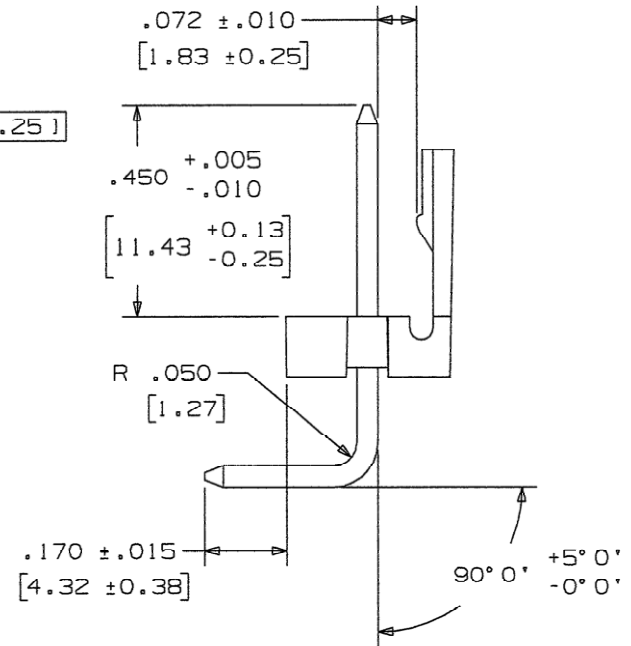
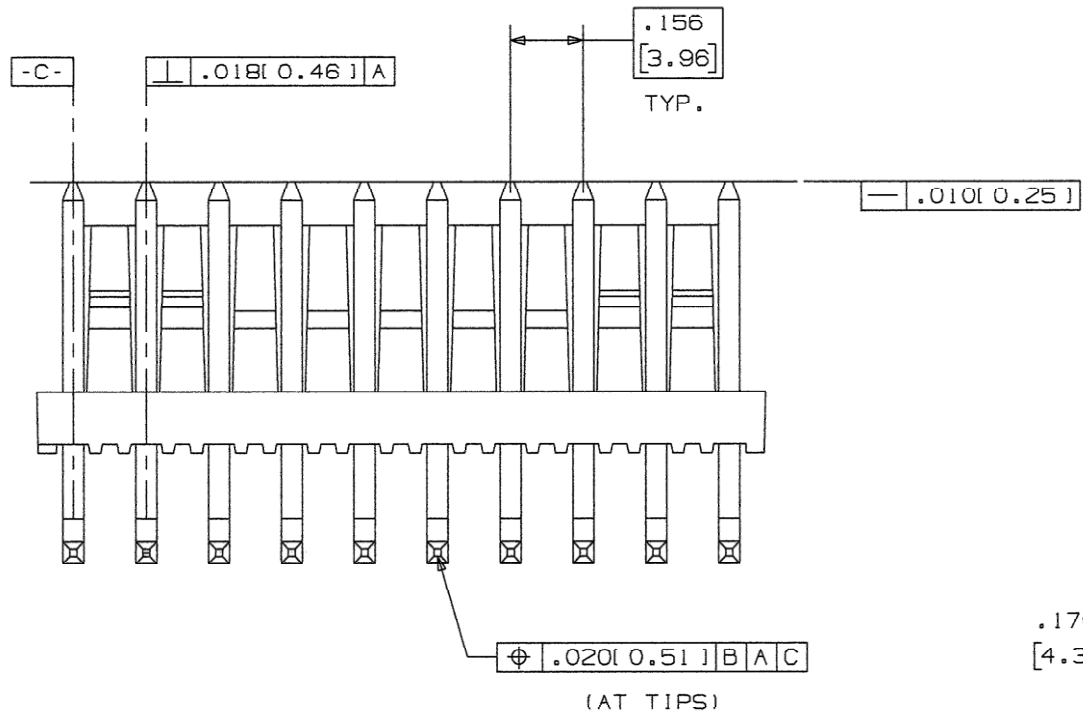
MAS-CON HEADER, Series 156, 3,69mm, 90° unbreakable, with locking, with polarization



3° MAX. TWIST IN EITHER DIRECTION



PART NUMBER SYSTEM
MTAS156-xx-yz
 * of POS. (2 THRU 12)
 PIN PLATING
 PACKAGING CODE: D = 500 PCS FOR 2 THRU 5 POS., C = 100 PCS FOR 6 THRU 12 POS.



# POS.	Dim. A	Dim. B
2	0,312 [7,92]	0,156 [3,96]
3	0,468 [11,89]	0,312 [7,92]
4	0,624 [15,85]	0,468 [11,89]
5	0,780 [19,81]	0,624 [15,85]
6	0,936 [23,77]	0,780 [19,81]
7	1,092 [27,74]	0,936 [23,77]
8	1,248 [31,70]	1,092 [27,74]
9	1,404 [35,66]	1,248 [31,70]
10	1,560 [39,62]	1,404 [35,66]
11	1,716 [43,59]	1,560 [39,62]
12	1,872 [47,55]	1,716 [43,59]

REV	DATE	NOTE	NAME
1	27.07.2020	issued	JAL