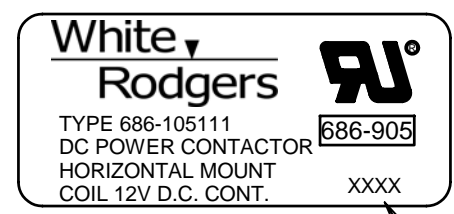
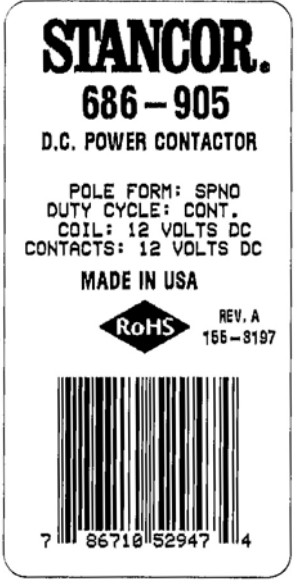


A B C D E F G H I

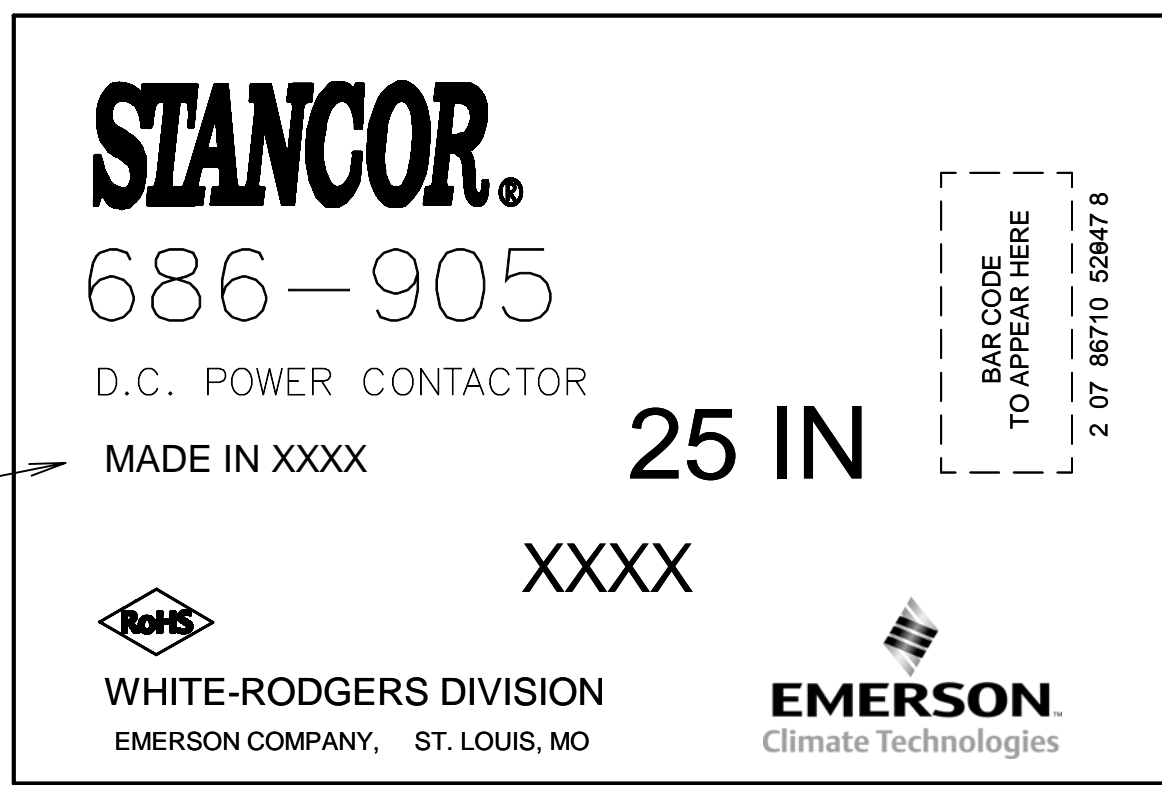


CONTROL LABEL

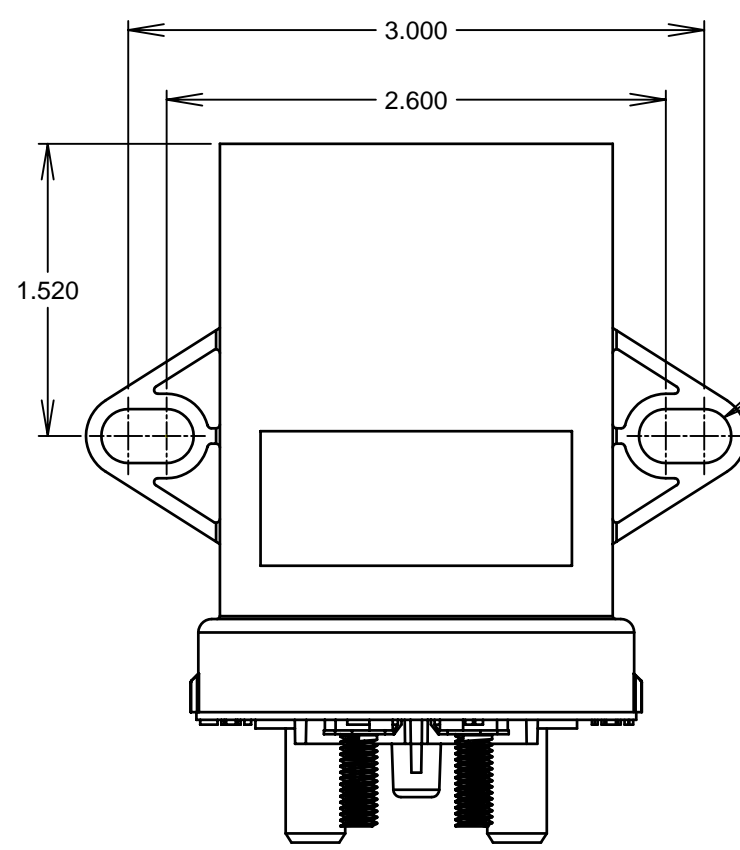
DATE CODE (YYWK)



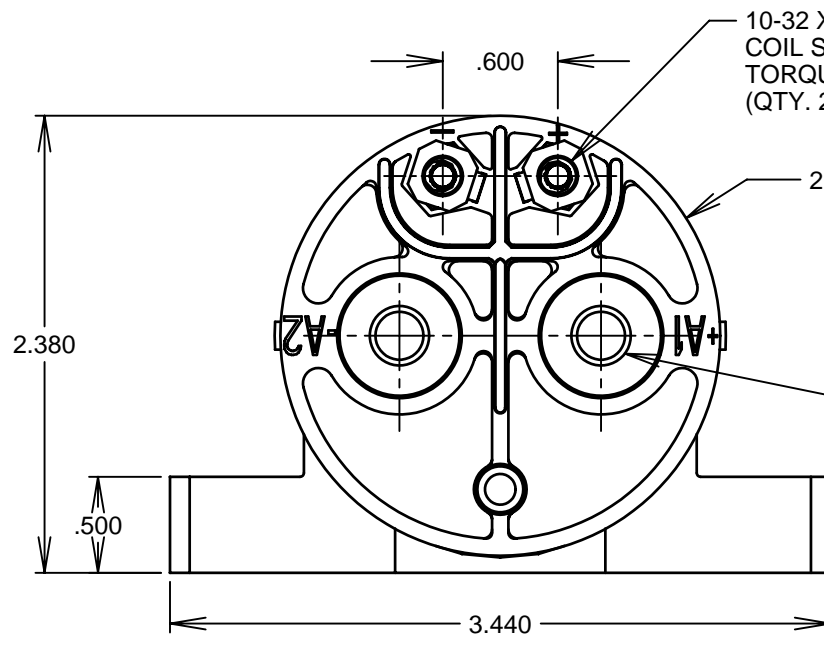
IND. CONTROL LABEL



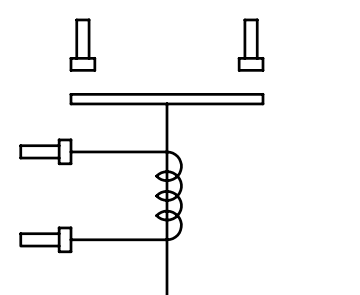
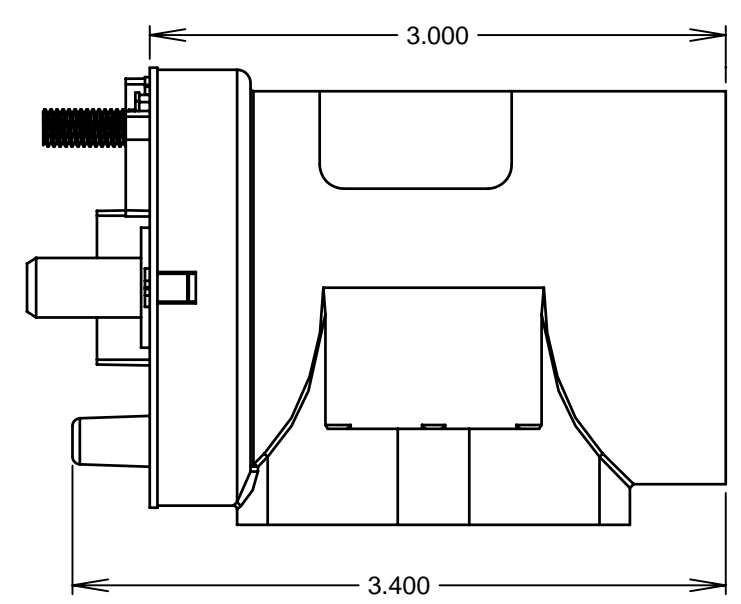
MASTER CARTON LABEL



.281 DIA. MOUNTING HARDWARE: 1/4-20 UNC BOLT (QTY. 2) LOCKWASHER (QTY. 2) WASHER (QTY. 2) TORQUE: 70 IN-LBS MAX.



NOTE: HARDWARE NOT INCLUDED



CIRCUIT DIAGRAM

							DO NOT SCALE DRAWING. WORK TO DIMENSIONS. IF PLATING IS SPECIFIED, ALL DIMENSIONS TO BE MET AFTER PLATING.		DESIGN	CTQ	CLASSIFICATION OF CHARACTERISTICS				
									★	★★	(CRITICAL)				
									◆	◆◆	(MAJOR)				
									C of C Review: JH Date: 4-16-07						
							159828	C	REVISED CONTROL LABEL & IND.CONTROL LABEL	09-03-07	SA	SIMILAR TO:	SUPERSEDING:	REFER TO QPRO 7.3-1011 FOR EXPLANATION OF CLASSIFICATION OF CHARACTERISTICS	
							158521	B	"COUNTRY OF ORIGIN" ADDED TO MASTER CARTON LABEL	4-16-07	EK	PROJ. NO.:	PART NO. WAS:	THIS DOCUMENT IS THE PROPERTY OF WHITE-RODGERS DIVISION OF EMERSON ELECTRIC CO. NEITHER THIS DOCUMENT NOR ANY INFORMATION CONTAINED HEREIN MAY BE USED, REPRODUCED, OR DISCLOSED TO THIRD PARTIES WITHOUT WHITE-RODGERS' WRITTEN CONSENT.	
							157067	A	RELEASED	11-6-06	RH	MADE FOR (ORIG. USAGE):	SCALE: NONE		
							ECN NO.	LETTER	REVISION RECORD	DATE	BY	DRAWN BY: ROGER HARDIEWAY	DATE: 11-6-06		
							MATERIAL (ALL MATERIALS AND PROCESSES MUST BE COMPLIANT WITH RoHS AND JIG LEVEL 'A'):						CHECKED BY: ED KOWALCZYK	DATE: 11--06	White Rodgers 8800 W. FLORENCE AVENUE P.O. BOX 54050 ST. LOUIS, MO 63178 (314) 533-3000
							FINISH:						TITLE: CUSTOMER CONTROL DRAWING FOR 686-905	DATE: 11--06	
ECN NO.	LETTER	REVISION RECORD			DATE	BY	PART NO.: 1000-1230								