

PART NUMBER SELECTION TABLES

Feed Through Terminals

Derating Chart

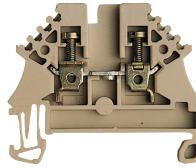
(applicable when using pluggable jumpers)

WDU 2.5N	WDU 2.5 and WDU 4
1 jumper 300 V	1 jumper 600 V
2 jumpers 125 V	2 jumpers†† 400 V
	3 jumpers 125 V

††with space between jumpers

WDU 2.5N

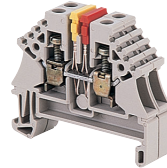
Only for WQV screw jumpers



Single Level

WDU 2.5N

Only for ZQV pluggable jumpers

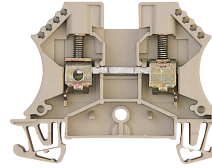


Reference Derating Chart

Single Level

WDU 2.5

Accepts pluggable or screw jumpers





Reference Derating Chart

Single Level

Terminal Block Selection Data

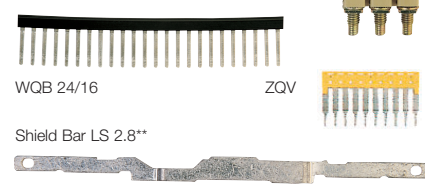
Available Options	Version	Part No.	Part No.	Part No.
	Beige Wernid	1023700000	1040800000*	1020000000
	Blue Wernid	1023780000		1020080000
	Orange PA	1023760000		1020060000
	Red PA			1020040000
	Yellow Wernid			1020020000
	Green Wernid			1020090000
	Violet PA			1037700000
	Brown Wernid			1037710000
	Gray Wernid			1037720000
	White Wernid			1036800000
	Black PA			1020010000
Dimensions				
Width / Length / Height mm (in.)	for TS 35	5/44/37.5 (.20/1.73/1.48)	5/44/37.5 (.20/1.73/1.48)	5/60/47 (.20/2.36/1.85)
Insulation stripping length	mm (in.)	10 (.39)	10 (.39)	10 (.39)
Technical Data				
Rated voltage / rated current / wire size	UL	300 V / 25 A / #22...12 AWG	300 V / 25 A / #22...12 AWG	600 V / 25 A / #22...12 AWG
	CSA	300 V / 20 A / #26...12 AWG	300 V / 20 A / #26...12 AWG	600 V / 20 A / #26...12 AWG
	VDE	500 V / 24 A / 1.5 mm ²	500 V / 24 A / 1.5 mm ²	800 V / 24 A / 2.5 mm ²
Torque	Nm (lb. in.)	0.51 (4.5)	0.51 (4.5)	0.8 (7.1)
Clamping screw	M	2.5	2.5	2.5

Selected Accessory Data†

End Plate (WAP) / Partition (WTW, TW) (thickness mm)	Type	Part No.	Type	Part No.	Type	Part No.
 WAP	WAP (1.5)	1060000000	WAP (1.5)	1060000000	WAP (1.5)	1050000000
 WTW	WAP (1.5)	1060080000	WAP (1.5)	1060080000	WAP (1.5)	1050080000
					WAP (1.5)	1050060000
					WTW (1.5)	1050100000
					WTW (3)	1050180000
	TW (1.5)	0191860000	TW (1.5)	0191860000		
	WEW 35/2†	1061200000	WEW 35/2†	1061200000	WEW 35/2†	1061200000

Jumpers

Note: Final number in model indicates no. of poles (e.g. WQV 2.5/2 = 2 poles). For additional information, see Accessories section.



WQV 2.5/2	1053660000	ZQV 2.5N/2	1693800000	WQV 2.5/2	1053660000	ZQV 2.5N/2	1693800000
WQV 2.5/3	1053760000	ZQV 2.5N/3	1693810000	WQV 2.5/3	1053760000	ZQV 2.5N/3	1693810000
WQV 2.5/4	1053860000	ZQV 2.5N/4	1693820000	WQV 2.5/4	1053860000	ZQV 2.5N/4	1693820000
WQV 2.5/5	1053960000	ZQV 2.5N/5	1693830000	WQV 2.5/5	1053960000	ZQV 2.5N/5	1693830000
WQV 2.5/6	1054060000	ZQV 2.5N/6	1693840000	WQV 2.5/6	1054060000	ZQV 2.5N/6	1693840000
WQV 2.5/7	1054160000	ZQV 2.5N/7	1693850000	WQV 2.5/7	1054160000	ZQV 2.5N/7	1693850000
WQV 2.5/8	1054260000	ZQV 2.5N/8	1693860000	WQV 2.5/8	1054260000	ZQV 2.5N/8	1693860000
WQV 2.5/9	1054360000	ZQV 2.5N/9	1693870000	WQV 2.5/9	1054360000	ZQV 2.5N/9	1693870000
WQV 2.5/10	1054460000	ZQV 2.5N/10	1693880000	WQV 2.5/10	1054460000	ZQV 2.5N/10	1693880000
WQB 24/16	1579060000	ZQV 2.5N/50	1693890000	WQB 24/16	1579060000	ZQV 2.5N/50	1693890000
				LS 2.8	1056400000		

ZQV 2.5N jumpers are also available in Red, Blue, and Black. See page 191

ZQV 2.5N jumpers are also available in Red, Blue, and Black. See page 191

Tools

Cutting tool WAW 1 for WQV jumpers
Screwdriver

WAW 1	9004500000	WAW 1	9004500000	WAW 1	9004500000
SD	9008330000	SD	9008330000	SD	9008330000

Test Plugs / Sockets



For #18 AWG wire
For #12 AWG wire

PS 2.3 (ø 2.3)	0180400000	PS 2.3 (ø 2.3)	0180400000	PS 2.3 (ø 2.3)	0180400000
StB 8.5 (ø 2.3)	0215700000	StB 8.5 (ø 2.3)	0215700000	StB 8.5 (ø 2.3)	0215700000

Marking Tags

Consecutive horizontal
Consecutive vertical

Print					
DEK 5/5	0473460001	DEK 5/5	0473460001	DEK 5/5	0473460001
DEK 5/5	0473560001	DEK 5/5	0473560001	DEK 5/5	0473560001

Note: Part numbers shown are for a single card of pre-printed tags numbered 1-50. For additional information, see Accessories section.

†See Accessories section for additional information.

†When WEW 35/2 is used, a WAP is not required.

**Shield bars snap into the lower part of the terminal block.

Shield wires can then be attached to pass the shield connection through the rail assembly.

*Pluggable jumpers must be ordered separately.