

AC Outlet Modules



These modules are intended for use within cabinets and enclosures as 120Vac outlets for power tools, lights, test equipment, computers, etc.

- Compact, easy to install
- CSA approved
- Four versions available:
 - single outlet
 - duplex outlet
 - duplex GFI, 15A
 - duplex GFI, 20A
- Single and duplex versions mount on 32mm and 35mm DIN rails
- GFI versions mount on 35mm DIN rail or can be direct mounted using an optional mounting kit

United States

Weidmuller Inc.
821 Southlake Blvd.
Richmond, Virginia 23236
Telephone: (800) 849-9343
Facsimile: (804) 379-2593
Email: info@weidmuller.com
Website: www.weidmuller.com

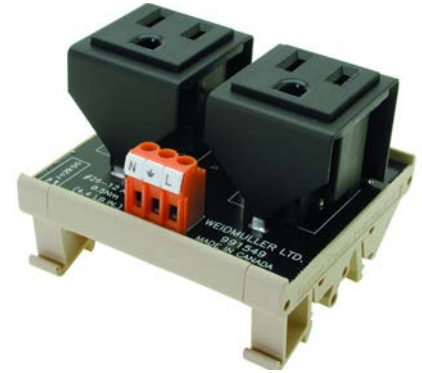
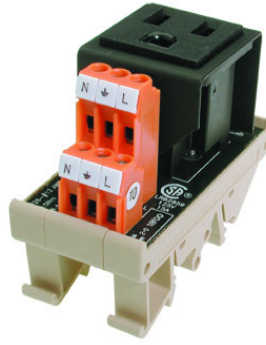
Canada

Weidmuller Ltd.
10 Spy Court
Markham, Ontario L3R 5H6
Telephone: (800) 268-4080
Facsimile: (905) 475-2798
Email: info1@weidmuller.ca
Website: www.weidmuller.ca

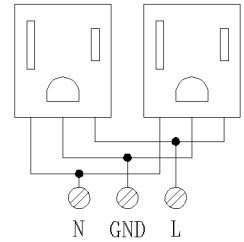
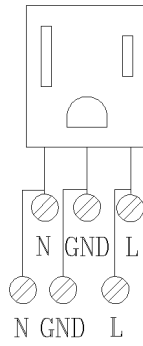
Mexico

Weidmuller, S.A. de C.V.
5 Sur No. 4311
Col. Huexotitla
72534 Puebla, Pue. Mexico
Telephone: (22) 37 2549
Facsimile: (22) 43 1981
Email: weidmull@acnet.net

AC Outlet Modules



Schematic diagram



Rated data

Input voltage

Rated current

120Vac

15A (CSA, UL)

120Vac

15A (CSA, UL)

Ordering data

TS32 / TS35 mounting (□ / □)

Type

Cat.No.

Single outlet

991548

Type

Cat.No.

Duplex outlet

991549

Dimensions

Width

Length

Height

30mm

70mm

48mm

75mm

70mm

48mm

Approvals

CSA, UL

CSA, UL

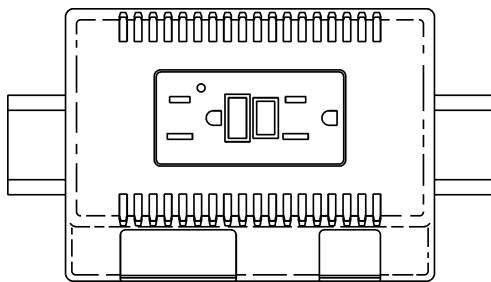
AC Outlet Modules with Ground Fault Interrupter



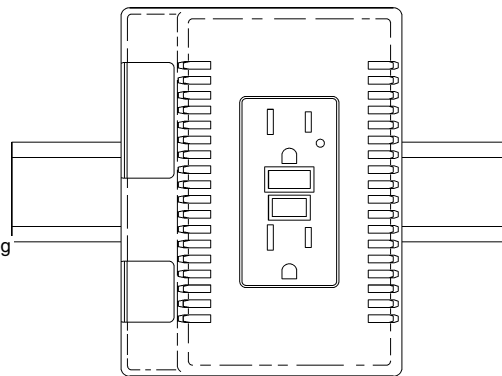
Specifications	
Voltage:	120Vac
Current:	15A max. total feedthrough and via duplex
Wire Size (AWG)	26-14 AWG (0.14 - 2.5mm ²)
Terminations:	top entry, tension clamp (LPZF)
Configuration:	1 x L, N, G input 2 x L, N, G GFI protected
Mounting:	TS35* optional direct mounting
Approval:	CSA, UL pending
Ordering data:	
Catalog number:	7940000037
Optional direct mounting kit:	7920560000 (includes 2 brackets & 4 screws).
Dimensions:	
Width:	130mm
Length:	95mm
Height:	67mm

Voltage:	120Vac
Current:	20A max. total 15A max. via duplex
Wire Size (AWG)	20-10AWG (0.5 - 6.0mm ²)
Terminations:	side entry, screw clamp (LLP 6.35)
Configuration:	1 x L, N, G input 2 x L, N, G GFI protected
Mounting:	TS35* optional direct mounting
Approval:	CSA, UL pending
Ordering data:	
Catalog number:	7940000036
Optional direct mounting kit:	7920560000 (includes 2 brackets & 4 screws).
Dimensions:	
Width:	130mm
Length:	95mm
Height:	67mm

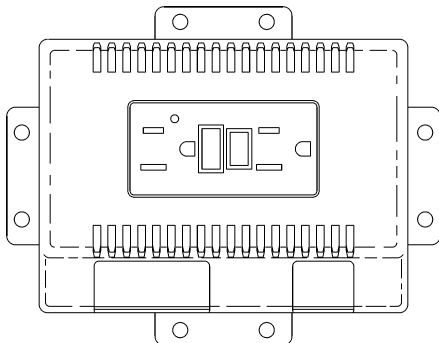
*TS35 foot can be rotated 90 degrees to allow mounting in vertical or horizontal alignment on vertical or horizontal DIN rails. TS35 foot is removed when direct mounting kit is installed.



Standard mounting
35mm DIN rail



35mm DIN rail mounting
foot rotated 90°



Locations for optional
direct mount brackets (2
required) 35mm DIN
rail foot is removed and
replaced by bracket kit
7920560000.

AC Outlet Modules with Ground Fault Interrupter

Application Note: Using the duplex GFI module to protect the AC outlets of Proport™ modules.

