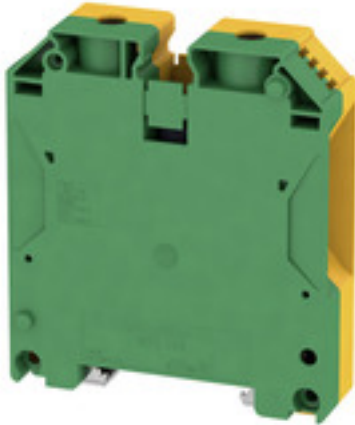


**W-Series**  
**WPE 70N/35****Weidmüller Interface GmbH & Co. KG**  
Klingenbergstraße 26  
D-32758 Detmold  
Germany  
Fon: +49 5231 14-0  
Fax: +49 5231 14-292083  
www.weidmueller.com**Product image****Klippon® Connect with clamping yoke Technology**

The high reliability and variety of designs of the terminal blocks with clamping yoke connections make planning easier and optimises operational safety. Klippon® Connect provides a proven response to a range of different requirements.

**General ordering data**

Type	WPE 70N/35
Order No.	<a href="#">9512200000</a>
Version	PE terminal, Screw connection, 70 mm <sup>2</sup> , 8400 A (70 mm <sup>2</sup> ), Green/yellow
GTIN (EAN)	4008 190403881
Qty.	10 pc(s).

**W-Series**  
**WPE 70N/35**

**Weidmüller Interface GmbH & Co. KG**  
 Klingenbergstraße 26  
 D-32758 Detmold  
 Germany  
 Fon: +49 5231 14-0  
 Fax: +49 5231 14-292083  
 www.weidmueller.com

**Technical data**
**Dimensions and weights**

Width	20.5 mm	Width (inches)	0.807 inch
Height	75 mm	Height (inches)	2.953 inch
Depth	85 mm	Depth (inches)	3.346 inch
Depth including DIN rail	86 mm	Net weight	185.633 g

**Temperatures**

Operating temperature range	For operating temperature range see EC Design Test Certificate / IEC Ex-Certificate of Conformity	Storage temperature, max.	55 °C
Storage temperature, min.	-25 °C	Storage temperature	-25 °C...55 °C
Continuous operating temp., min.	-60 °C	Continuous operating temp., max.	130 °C

**Environmental Product Compliance**

REACH SVHC	Lead 7439-92-1
------------	----------------

**Material data**

Material	Wemid	Colour	Green/yellow
UL 94 flammability rating	V-0		

**Rating data IECEx/ATEX**

Certificate No. (ATEX)	DEMKO14ATEX1338U	Certificate No. (IECEX)	IECEXULD14.0005U
Wire cross section max. (ATEX)	70 mm <sup>2</sup>	Wire cross section max. (IECEX)	70 mm <sup>2</sup>
Operating temperature range	For operating temperature range see EC Design Test Certificate / IEC Ex-Certificate of Conformity	Marking EN 60079-7	Ex eb II C Gb
Ex 2014/34/EU label	II 2 G D		

**System specifications**

Version	Screw connection, With PE connection, in closed state	End cover plate required	No
Number of potentials	1	Number of levels	1
Number of clamping points per level	2	Number of potentials per tier	1
Levels cross-connected internally	No	PE connection	Yes
Rail	TS 35	N-function	No
PE function	Yes	PEN function	Yes

**Additional technical data**

Explosion-tested version	Yes	Installation advice	when screwed in
Interlock	for screw fixing	Number of similar terminals	1
Open sides	closed	Type of mounting	when screwed in

**CSA rating data**

Certificate No. (CSA)	200039-1581431	Wire cross section max. (CSA)	0 AWG
Wire cross section min. (CSA)	6 AWG		

**W-Series**  
**WPE 70N/35**

**Weidmüller Interface GmbH & Co. KG**  
 Klingenbergstraße 26  
 D-32758 Detmold  
 Germany  
 Fon: +49 5231 14-0  
 Fax: +49 5231 14-292083  
 www.weidmueller.com

**Technical data****Conductors for clamping (rated connection)**

Blade size	S6 (DIN 6911)	Clamping range, max.	95 mm <sup>2</sup>
Clamping range, min.	16 mm <sup>2</sup>	Clamping screw	M 8
Connection cross-section, stranded, max.	95 mm <sup>2</sup>	Connection cross-section, stranded, min.	16 mm <sup>2</sup>
Connection direction	on side	Gauge to IEC 60947-1	B11
Number of connections	2	Stripping length	22 mm
Tightening torque, max.	12 Nm	Tightening torque, min.	8 Nm
Type of connection	Screw connection	Wire connection cross section AWG, max.	AWG 0
Wire connection cross section AWG, min.	AWG 6	Wire connection cross section, finely stranded, max.	70 mm <sup>2</sup>
Wire connection cross-section, finely stranded with wire-end ferrules DIN 46228/1, max.	70 mm <sup>2</sup>	Wire connection cross-section, finely stranded with wire-end ferrules DIN 46228/1, min.	16 mm <sup>2</sup>
Wire connection cross-section, finely stranded with wire-end ferrules DIN 46228/4, max.	50 mm <sup>2</sup>	Wire connection cross-section, finely stranded with wire-end ferrules DIN 46228/4, min.	16 mm <sup>2</sup>
Wire connection cross-section, finely stranded, min.	16 mm <sup>2</sup>	Wire connection cross-section, solid core, max.	16 mm <sup>2</sup>
Wire connection cross-section, solid core, min.	16 mm <sup>2</sup>		

**PE rating data**

Rated short-time current	8400 A (70 mm <sup>2</sup> )	Centre screw on PE terminals	M 5
Tightening torque range for fixing screw	2.0...4.0 Nm	PEN function	Yes

**Rating data**

Rated cross-section	70 mm <sup>2</sup>	Rated voltage to adjoining terminal	1,000 V
Standards	IEC 60947-7-2	Volume resistance according to IEC 60947-7-x	0.17 mΩ
Power loss in accordance with IEC 60947-7-x	6.14 W	Rated impulse withstand voltage to adjacent terminal	8 kV
Pollution severity	3		

**UL rating data**

Certificate No. (cURus)	E60693	Conductor size Factory wiring max. (cURus)	0 AWG
Conductor size Factory wiring min. (cURus)	6 AWG	Conductor size Field wiring max. (cURus)	0 AWG
Conductor size Field wiring min. (cURus)	6 AWG		

**Classifications**

ETIM 6.0	EC000901	ETIM 7.0	EC000901
eClass 9.0	27-14-11-41	eClass 9.1	27-14-11-41
eClass 10.0	27-14-11-41	UNSPSC	30-21-18-11

**Data sheet**

**W-Series**  
**WPE 70N/35**

**Weidmüller Interface GmbH & Co. KG**  
Klingenbergstraße 26  
D-32758 Detmold  
Germany  
Fon: +49 5231 14-0  
Fax: +49 5231 14-292083  
www.weidmueller.com

**Technical data**

**Approvals**

Approvals



ROHS Conform

**Downloads**

Approval/Certificate/Document of Conformity	<a href="#">Attestation of Conformity</a> <a href="#">IECEX Certificate</a> <a href="#">EAC certificate</a> <a href="#">INMETRO certificate</a> <a href="#">DE_PT1002_20160414_263_ISSUE01.pdf</a> <a href="#">ATEX Certificate</a> <a href="#">Declaration of Conformity Terminals</a>
Brochure/Catalogue	<a href="#">CAT 1 TERM 16/17 EN</a>
Engineering Data	<a href="#">EPLAN, WSCAD, Zuken E3.S</a>
Engineering Data	<a href="#">STEP</a>
User Documentation	<a href="#">NTI WDU/WPE 70N/35</a> <a href="#">StorageConditionsTerminalBlocks</a> <a href="#">Instruction</a>

**Safety note**

Safety notice [Safety Information](#)

**Data sheet**

**W-Series**  
**WPE 70N/35**

**Weidmüller Interface GmbH & Co. KG**  
Klingenbergstraße 26  
D-32758 Detmold  
Germany  
Fon: +49 5231 14-0  
Fax: +49 5231 14-292083  
[www.weidmueller.com](http://www.weidmueller.com)

**Drawings**

