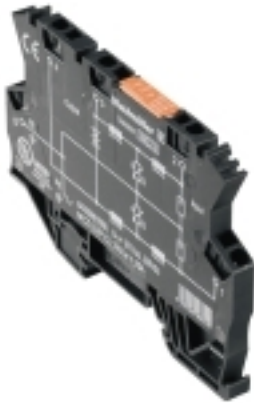


MCZ SERIES
MCZ OVP CL 24VUC 1,25A

Weidmüller Interface GmbH & Co. KG
Klingenbergstraße 26
D-32758 Detmold
Germany
Fon: +49 5231 14-0
Fax: +49 5231 14-292083
www.weidmueller.com



- Slimline overvoltage protection terminal with tension clamp connection
- 6 mm Slimline fine overvoltage protection
- fast wiring thanks to TS contact and tension clamp connections
- can be cross-connected

General ordering data

Type	MCZ OVP CL 24VUC 1,25A
Order No.	8448960000
Version	MCZ SERIES, Surge protection for instrumentation and control, 1.25 A
GTIN (EAN)	4032248068104
Qty.	10 pc(s).

Creation date April 13, 2020 11:18:23 AM CEST

Catalogue status 03.04.2020 / We reserve the right to make technical changes.

MCZ SERIES
MCZ OVP CL 24VUC 1,25A

Weidmüller Interface GmbH & Co. KG
 Klingenbergstraße 26
 D-32758 Detmold
 Germany
 Fon: +49 5231 14-0
 Fax: +49 5231 14-292083
 www.weidmueller.com

Technical data**Dimensions and weights**

Width	6 mm	Width (inches)	0.236 inch
Height	91 mm	Height (inches)	3.583 inch
Depth	63.5 mm	Depth (inches)	2.5 inch
Net weight	25.3 g		

Temperatures

Operating temperature, max.	60 °C	Operating temperature, min.	-40 °C
Storage temperature, max.	85 °C	Storage temperature, min.	-40 °C
Operating temperature	-40 °C...60 °C	Storage temperature	-40 °C...85 °C

Environmental Product Compliance

REACH SVHC Lead 7439-92-1

Rated data UL

Certificate No. (UL) E311081

General data

Colour	black	Design	Terminal
Height with TS 35	63.5 mm	Protection degree	IP20
Rail	TS 35	Segment	Measurement - Monitoring - Setting
UL 94 flammability rating	V-0	Version	Surge protection for measurement and control

Insulation coordination acc. to EN 50178

Pollution severity	2	Surge voltage category	III
--------------------	---	------------------------	-----

Rated data IEC / EN

Rated voltage (AC)	24 V	Rated voltage (DC)	24 V
Rated voltage (DC), max.	38 V	Voltage type	AC/DC
Max. continuous voltage, U _c (AC)	27 V	Discharge current, max. (8/20 μs)	5 kA
Discharge current, I _{imp} (10/350 μs)	1 kA	Lightning test current I _{imp} (10/350 μs)	1 kA
Fuse	1.3 A	Standards	HART-compatible
Protection level on output side Wire-PE 1kV/μs, typically	40 V	Protection level on output side Wire-PE 8/20 μs, typically	65 V
Protection level on output side Wire-wire 1 kV/μs, typically	80 V	Protection level on output side Wire-wire 8/20 μs, typically	130 V
Inductance L and L1	35 μH	Limiting frequency (-3 dB) at load resistance	500 kHz 240 Ω
Load resistance (for limiting frequency)	240 Ω	Operating current, I _{max.}	1.25 A
Operating voltage	38 V	Rated current I _N	1.25 A
Requirements category acc. to IEC 61643-21	D1	Response time	≤ 100 ps
Volume resistance	1.00 Ω		

MCZ SERIES
MCZ OVP CL 24VUC 1,25A

Weidmüller Interface GmbH & Co. KG
 Klingenbergstraße 26
 D-32758 Detmold
 Germany
 Fon: +49 5231 14-0
 Fax: +49 5231 14-292083
 www.weidmueller.com

Technical data**Connection data**

Cross-section	1.5 mm ²	Wire connection method	Spring connection
Type of connection	Tension-clamp connection	Stripping length, rated connection	8 mm
Clamping range, rated connection	1.5 mm ²	Clamping range, min.	0.5 mm ²
Clamping range, max.	1.5 mm ²	Wire connection cross section AWG, min.	AWG 26
Wire connection cross section AWG, max.	AWG 16	Wire cross-section, solid, min.	0.5 mm ²
Wire cross-section, solid, max.	1.5 mm ²	Wire connection cross-section, finely stranded, min.	0.5 mm ²
Wire connection cross section, finely stranded, max.	1.5 mm ²	Wire cross-section, finely stranded, min. (AWG)	AWG 26
Wire cross-section, finely stranded, max. (AWG)	AWG 16	Wire connection cross-section, finely stranded with wire-end ferrules DIN 46228/4, min.	0.5 mm ²
Wire connection cross-section, finely stranded with wire-end ferrules DIN 46228/4, max.	1.5 mm ²	Conductor cross-section, flexible, AEH (DIN 46228-1), min.	0.5 mm ²
Conductor cross-section, flexible, AEH (DIN 46228-1), max.	1.5 mm ²	Blade size	0.6 x 3.5 mm

Classifications

ETIM 6.0	EC000943	ETIM 7.0	EC000943
eClass 9.0	27-13-08-07	eClass 9.1	27-13-08-07
eClass 10.0	27-13-08-07	UNSPSC	30-21-18-11

Approvals

Approvals



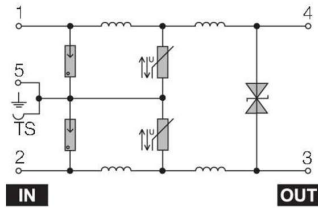
ROHS Conform

Downloads

Approval/Certificate/Document of Conformity	CE PAPER Declaration of Conformity
Brochure/Catalogue	CAT 4.4 ELECTR 16/17 EN
Engineering Data	EPLAN, WSCAD
Engineering Data	STEP
User Documentation	Instruction sheet

**MCZ SERIES
MCZ OVP CL 24VUC 1,25A**

Weidmüller Interface GmbH & Co. KG
Klingenbergstraße 26
D-32758 Detmold
Germany
Fon: +49 5231 14-0
Fax: +49 5231 14-292083
www.weidmueller.com

Drawings**Electric symbol**

Circuit diagram