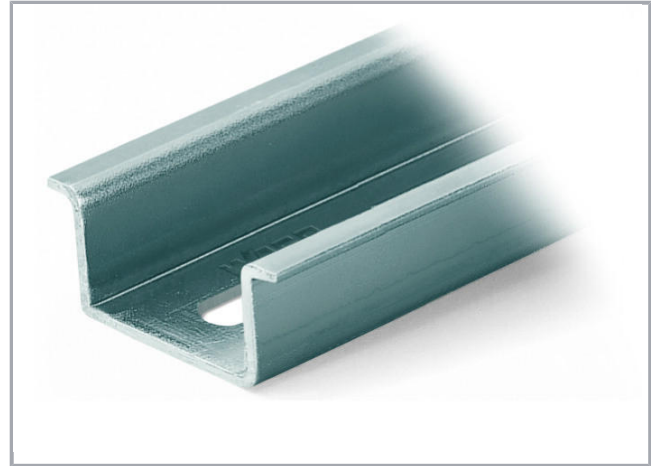
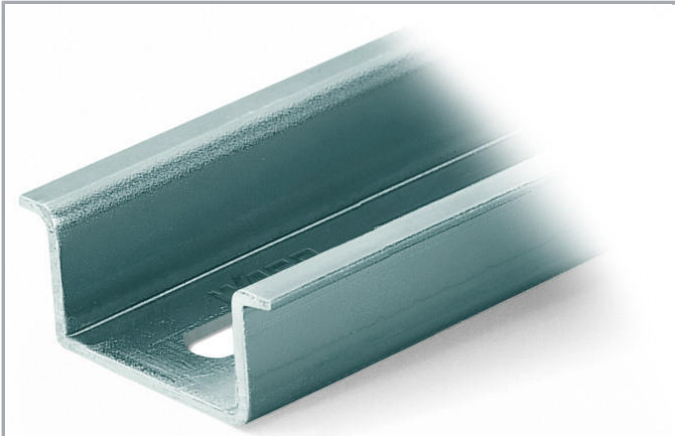


Data sheet | Item number: 210-197

Steel carrier rail; 35 x 15 mm; 1.5 mm thick; 2 m long; slotted; similar to EN 60715

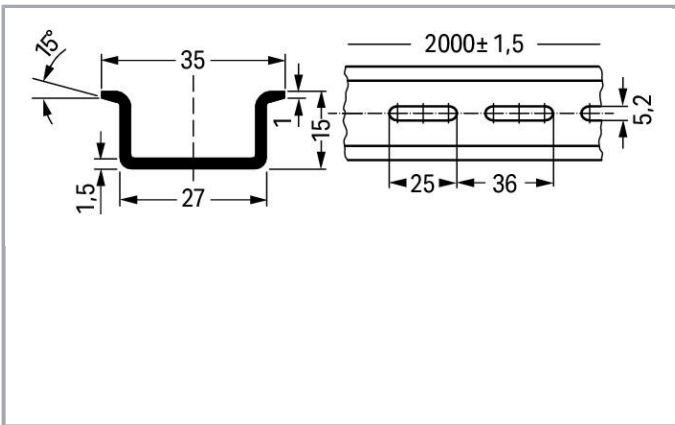


www.wago.com/210-197



RoHS Compliant

[BOMcheck.net](https://www.bomcheck.net)



Data

Technical Data

Main product function

Mounting Accessories

Subject to changes.

WAGO Kontakttechnik GmbH & Co. KG
Hansastr. 27
32423 Minden
Phone: +49571 887-0 | Fax: +49571 887-169
Email: info.de@wago.com | Web: www.wago.com

Do you have any questions about our products?
We are always happy to take your call at +49 (571) 887-44222.

Geometrical Data

Width	2000 mm / 78.74 inch
Height	15 mm / 0.591 inch
Depth	35 mm / 1.378 inch

Material Data

Weight	1235 g
--------	--------

Commercial data







Product Group	2 (Terminal Block Accessories)
Packaging type	BOX
Country of origin	IT
GTIN	4017332102759
Customs Tariff No.	72169180000

Compatible products

Marking accessories

	Item no.: 210-708 Labels; for TP printers; 9.5 x 25 mm	www.wago.com/210-708
	Item no.: 210-808 Labels; for Smart Printer; 9.5 x 25 mm	www.wago.com/210-808

assembling

	Item no.: 209-137 Mounting adapter; can be used as end plate; 6.5 mm wide; gray	www.wago.com/209-137
	Item no.: 210-148 Angled support bracket; without screw	www.wago.com/210-148
	Item no.: 210-149 Screw M 5 x 8; for angled support bracket	www.wago.com/210-149
	Item no.: 249-116 Screwless end stop; 6 mm wide; for DIN-rail 35 x 15 and 35 x 7.5; gray	www.wago.com/249-116
	Item no.: 249-117 Screwless end stop; 10 mm wide; for DIN-rail 35 x 15 and 35 x 7.5; gray	www.wago.com/249-117
	Item no.: 249-197 Screwless end stop; 14 mm wide; for DIN-rail 35 x 15 and 35 x 7.5; gray	www.wago.com/249-197

Subject to changes.



Downloads Documentation

Bid Text

210-197 X81 - Datei	Feb 19, 2019	xml 2.8 kB	Download
------------------------	--------------	---------------	----------

210-197 doc - Datei	Aug 31, 2017	doc 24.1 kB	Download
------------------------	--------------	----------------	----------

CAD/CAE-Data

CAD data

2D/3D Models 210-197	URL	Download
----------------------	-----	----------

CAE data

WSCAD Universe 210-197	Download
------------------------	----------

Installation Notes

Subject to changes.