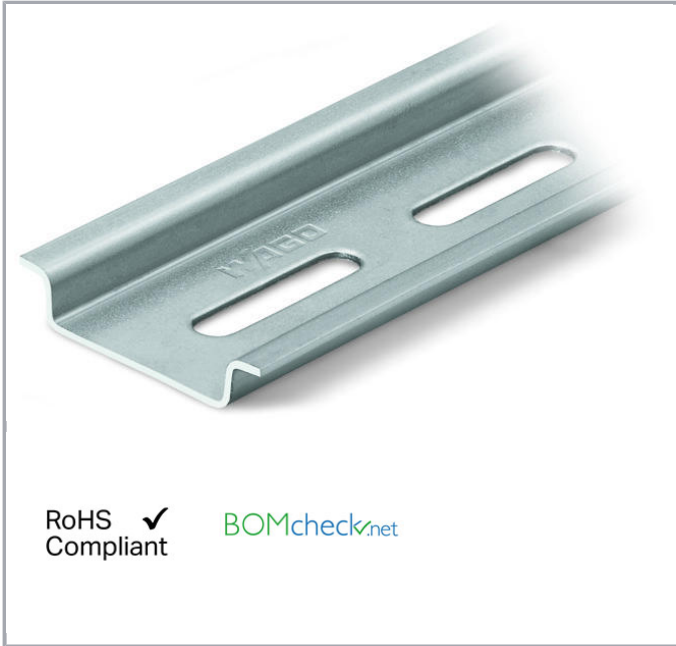


Data sheet | Item number: 210-112

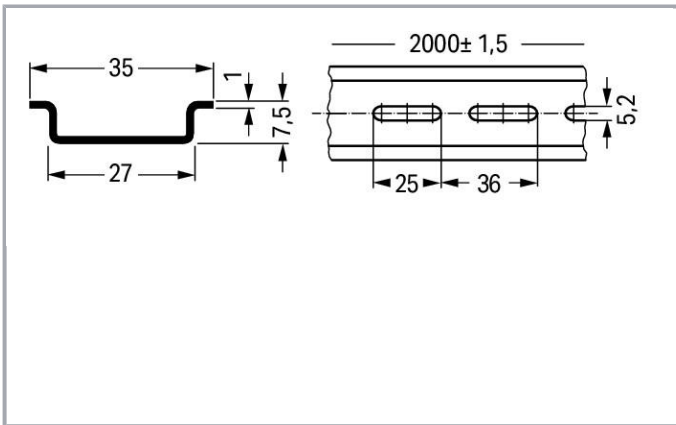
Steel carrier rail; 35 x 7.5 mm; 1 mm thick; 2 m long; slotted; according to EN 60715; "Hole width 25 mm



www.wago.com/210-112



RoHS Compliant [BOMcheck.net](https://www.bomcheck.net)



Data

Technical Data

Main product function

Mounting Accessories

Geometrical Data

Width

2000 mm / 78.74 inch

Subject to changes.

WAGO Kontakttechnik GmbH & Co. KG
Hansastr. 27
32423 Minden
Phone: +49571 887-0 | Fax: +49571 887-169
Email: info.de@wago.com | Web: www.wago.com

Do you have any questions about our products?
We are always happy to take your call at +49 (571) 887-44222.

| | |
|--------|---------------------|
| Height | 7.5 mm / 0.295 inch |
| Depth | 35 mm / 1.378 inch |

Material Data







| | |
|--------|-------|
| Weight | 630 g |
|--------|-------|

Commercial data

| | |
|--------------------|--------------------------------|
| Product Group | 2 (Terminal Block Accessories) |
| Packaging type | BOX |
| Country of origin | IT |
| GTIN | 4017332272292 |
| Customs Tariff No. | 72169180000 |

Compatible products

assembling

| | | |
|--|---|--|
|  | Item no.: 209-137 Mounting adapter; can be used as end plate; 6.5 mm wide; gray | www.wago.com/209-137 |
|  | Item no.: 210-148 Angled support bracket; without screw | www.wago.com/210-148 |
|  | Item no.: 210-149 Screw M 5 x 8; for angled support bracket | www.wago.com/210-149 |
|  | Item no.: 249-116 Screwless end stop; 6 mm wide; for DIN-rail 35 x 15 and 35 x 7.5; gray | www.wago.com/249-116 |
|  | Item no.: 249-117 Screwless end stop; 10 mm wide; for DIN-rail 35 x 15 and 35 x 7.5; gray | www.wago.com/249-117 |
|  | Item no.: 249-197 Screwless end stop; 14 mm wide; for DIN-rail 35 x 15 and 35 x 7.5; gray | www.wago.com/249-197 |

Marking accessories

| | | |
|--|--|--|
|  | Item no.: 210-708 Labels; for TP printers; 9.5 x 25 mm | www.wago.com/210-708 |
|  | Item no.: 210-808 Labels; for Smart Printer; 9.5 x 25 mm | www.wago.com/210-808 |

General accessories

Subject to changes.



Item no.: 209-109

Edge guards; for DIN 35 rail (7.5 mm high); gray

www.wago.com/209-109

Downloads

Documentation

Bid Text

| | | | |
|-------------------------|--------------|-----------------|----------|
| 210-112 docx - Datei | Nov 23, 2018 | docx 14.9 kB | Download |
| 210-112 X81 - Datei | Feb 19, 2019 | xml 2.8 kB | Download |

CAD/CAE-Data

CAD data

| | | |
|----------------------|-----|----------|
| 2D/3D Models 210-112 | URL | Download |
|----------------------|-----|----------|

CAE data

| | |
|------------------------|----------|
| WSCAD Universe 210-112 | Download |
|------------------------|----------|

Installation Notes

Subject to changes.



| DIN-Rail | Item No. | Current [A] | Acc. to mm ² /AWG Cu |
|---|----------|-------------|---------------------------------|
| DIN 35 x 7.5 (steel) | | | |
| slotted | 210-112 | 76 | 16/6 |
| unslotted | 210-113 | 76 | 16/6 |
| DIN 35 x 15 (steel) | | | |
| 1.5 mm thick | 210-114 | 125 | 35/2 |
| 2.3 mm thick | 210-118 | 125 | 35/2 |
| DIN 35 x 7.5 (Al) | | | |
| unslotted | 210-196 | 76 | 16/6 |
| DIN 35 x 15 (Cu) | | | |
| 2.3 mm thick | 210-198 | 309 | 150/6/0 |
| Current applies to rails of 1 m/3'3" length | | | |

When using standard carrier rails as ground conductor busbars, please refer to the maximum current capacities listed above.

Steel carrier rails are not suited for PEN (ground and N-conductor) applications per EN 60947-7-2 (VDE 0611, Part 3).

Subject to changes.