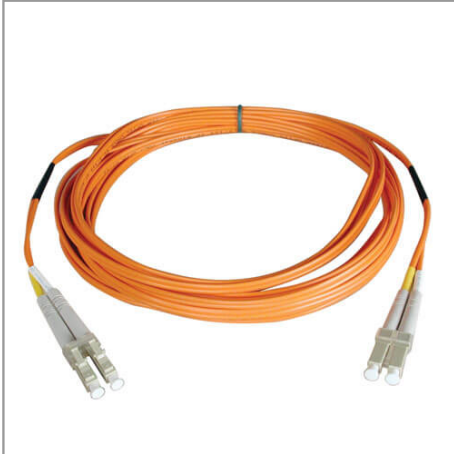


## Duplex Multimode 50/125 Fiber Patch Cable (LC/LC), 12M (40 ft.)

MODEL NUMBER: **N520-12M**



### Description

Tripp Lite's 12-meter multimode duplex Fibre Channel optic LC/LC patch cable is manufactured from 50/125 zipcord fiber. The cable has LC connectors on each end. It has a PVC jacket and is FDDI and OFNR rated. 50/125 Duplex multimode fiber is most commonly used in Fibre Channel applications. It is backward compatible with 62.5 micron fiber and provides built-in headroom for future applications. The cable provides higher bandwidth optimized for Gigabit and 10Gbps networks as well. Also available in 1, 2, 3, 5, 15, 20, 25, 30, and 50 meter lengths. Enter "N520-" in the search field to bring up all lengths. For LC-SC cables, search "N516-", and for SC-SC, search "N506-".

### Features

- Constructed with 50/125 micron cable
- Length - 12M ( 40ft )
- Use on fiber and fibre channel installations
- LC male to LC male connectors
- Higher bandwidth optimized for gigabit and 10Gbps networks
- Backward compatible with 62.5 micron fiber
- Built-in headroom for future applications
- Number of fibers: 2
- Fiber type: all glass graded index
- Core diameter: Two 50+/-3 microns
- CLAD diameter: 125+/-2 microns
- Primary coating diameter: 245+/-15 microns
- Primary coating material: acrylate
- Secondary coating diameter: 900+/-50 microns

### Highlights

- Premium PVC multimode patch cables
- Attenuation loss meets or exceeds the latest industry standards
- Higher bandwidth, optimized for gigabit and 10Gbps networks
- Backward compatible with 62.5 micron fiber
- Built-in headroom for future applications

### System Requirements

- Any fiber optic hardware or NIC card requiring multimode duplex cable with LC/LC connectors

### Package Includes

- 12M Duplex MMF Cable LC/LC 50/125 Fiber Patch Cable



- Secondary coating material: PVC
- Attenuation @850NM: 3.5DB/KM maximum, @1300NM: 1.0DB/KM maximum
- Bandwidth @850NM: 220 MHz-KM minimum, @1300NM: 600 MHz-KM minimum
- Numeric aperture: .275 nominal
- Proof test level: 100,000 PSI
- Insertion loss testing performed on every connector (0.2db typical) and provided with cable
- Beveled edge on ends of glass makes insertion of plug a breeze

## Specifications

OVERVIEW	
UPC Code	037332156327
Clad Diameter	125 micron
Core Diameter	50 micron
Number of Fibers	2
Optical Mode	OM2
INPUT	
Cable Length (ft.)	39.4
Cable Length (m)	12
Cable Length (in.)	472.4
PHYSICAL	
Color	Orange
Shipping Dimensions (hwd / cm)	22.86 x 17.78 x 1.27
Shipping Dimensions (hwd / in.)	9.00 x 7.00 x 0.50
Shipping Weight (kg)	0.08
Shipping Weight (lbs.)	0.18
COMMUNICATIONS	
Network Speed	1Gbps
CONNECTIONS	
Side A - Connector 1	LC DUPLEX (MALE)
Side B - Connector 1	LC DUPLEX (MALE)
FEATURES & SPECIFICATIONS	



**Tripp Lite**  
1111 W. 35th Street  
Chicago, IL 60609 USA  
Telephone: 773.869.1234  
[www.tripplite.com](http://www.tripplite.com)

Technology	Multimode
<b>SPECIAL FEATURES</b>	
Push/Pull Tabs	No
<b>CERTIFICATIONS</b>	
Certifications	RoHS compliant
Approvals	FDDI and OFNR rated
<b>WARRANTY</b>	
Product Warranty Period (Worldwide)	Lifetime limited warranty

© 2020 Tripp Lite. All rights reserved. All product and company names are trademarks or registered trademarks of their respective holders. Use of them does not imply any affiliation with or endorsement by them. Tripp Lite has a policy of continuous improvement. Specifications are subject to change without notice. Tripp Lite uses primary and third-party agencies to test its products for compliance with standards. See a list of Tripp Lite's testing agencies: <https://www.tripplite.com/products/product-certification-agencies>