

Power Supplies

DC to AC Inverters

For 2 Bulb, 7W Diming

CXA Series CXA-P1212-VJL

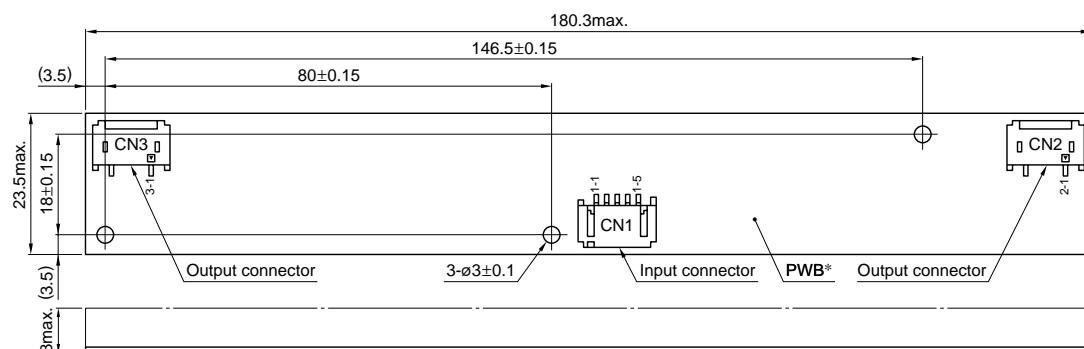
FEATURES

- The CXA-P1212-VJL is an inverter for 2-cold cathode fluorescent lamps and features a built-in dimmer.
- Because they employ advanced output current control, fluctuations in input voltage, load, and distributed capacitance have virtually no effect on brightness.
- Output open and short circuit conditions result in no damage, heat generation, or other difficulties.
- Built-in fuse assures a high degree of safety.
- The bottom of the board has a flat structure that facilitates insulation.
- Ideal for 10- to 14-inch class LCD panels.

TEMPERATURE AND HUMIDITY RANGES

| | | |
|-------------------|-----------------------------------------------------|--------------|
| Temperature range | Operating | 0 to +70°C |
| | Storage | -30 to +85°C |
| Humidity range | 95(%)RH max. [Maximum wet-bulb temperature 38°C] | |

SHAPES AND DIMENSIONS



*Substrate(PWB: Printed wiring board): Inflammable material UL94V-0 t=1mm

Weight: 21g typ.

Dimensions in mm

| Terminal No. | Connector manufacturer and type name | No. of connector pin |
|--------------|------------------------------------------------------|----------------------|
| CN1 | Japan Solderless Terminal Co., Ltd. S5B-PH-SM3 | 5 |
| CN2 | Japan Solderless Terminal Co., Ltd. SM02(8.0)B-BHS-1 | 3 |
| CN3 | Japan Solderless Terminal Co., Ltd. SM02(8.0)B-BHS-1 | 3 |

TERMINAL NUMBERS AND FUNCTIONS

CN1

| Terminal No. | Functions |
|--------------|----------------------------------------------------|
| CN1-1 | +Vin |
| CN1-2 | -Vin(GND) |
| CN1-3 | Vbr (Brightness dimmer voltage) |
| CN1-4 | NC (Used in the internal circuits, does not use) |
| CN1-5 | Vrmt (remote operation voltage: DC. 4.75 to 5.25V) |

CN2

| Terminal No. | Functions |
|--------------|-------------|
| CN2-1 | lout1 |
| CN2-2 | NC |
| CN2-3 | lout-return |

CN3

| Terminal No. | Functions |
|--------------|-------------|
| CN3-1 | lout2 |
| CN3-2 | NC |
| CN3-3 | lout-return |

Power Supplies

DC to AC Inverters

For 2 Bulb, 7W Diming

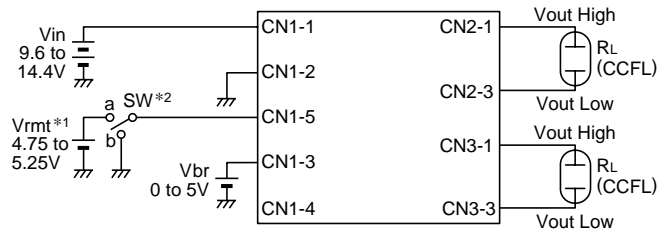
CXA Series CXA-P1212-VJL

ELECTRICAL CHARACTERISTICS

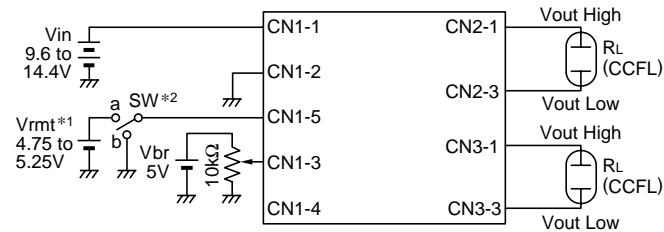
| Items | | Specifications | | | Conditions | | | | Brightness | |
|-----------------------------|----------|----------------|------|------|------------|------------|----------|----------|------------|---------|
| | | min. | typ. | max. | Vin(V) | Vbright(V) | Ta(°C) | RL(kΩ) | | |
| Output current | Irms(mA) | lout1 | 5.3 | 6 | 6.7 | 12±2.4 | 0 | 0 to +70 | 76 to 114 | Maximum |
| | | lout2 | 5.3 | 6 | 6.7 | 12±2.4 | 0 | 0 to +70 | 76 to 114 | Maximum |
| | | lout1 | 5.5 | 6 | 6.5 | 12±1.2 | 0 | 0 to +70 | 95 | Maximum |
| | | lout2 | 5.5 | 6 | 6.5 | 12±1.2 | 0 | 0 to +70 | 95 | Maximum |
| | | lout1 | 1.7 | 2 | 2.4 | 12±1.2 | 3.4 | 0 to +70 | 250 | Minimum |
| | | lout2 | 1.7 | 2 | 2.4 | 12±1.2 | 3.4 | 0 to +70 | 250 | Minimum |
| Input current | Idc(A) | lin | — | 0.76 | 1.3 | 12±2.4 | 0 to 3.4 | 0 to +70 | 76 to 114 | |
| Oscillation frequency | (kHz) | f | 52 | 58 | 64 | 12±2.4 | 0 | 0 to +70 | 95 | |
| Open circuit output voltage | Erms(V) | Vopen | 1400 | 1500 | 2000 | 12±2.4 | 0 | 0 to +70 | ∞ | |

TYPICAL CONNECTIONS

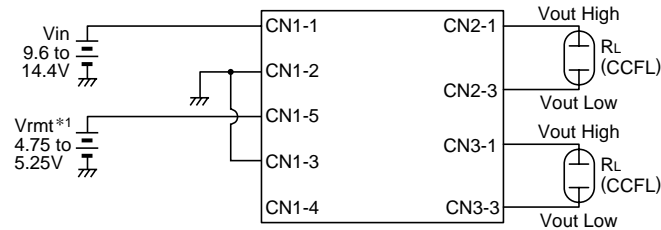
EXAMPLE OF VOLTAGE DIMMER CONTROL



EXAMPLE OF POTENTIOMETER DIMMER CONTROL



NO DIMMER CONTROL



*1 Vbrmt (remote voltage) shall be ON after Vin was ON.

*2 SW a: ON, b: OFF

TYPICAL ELECTRICAL CHARACTERISTICS

OUTPUT CURRENT vs. BRIGHTNESS DIMMER VOLTAGE

