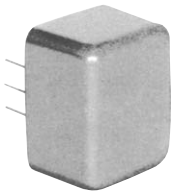
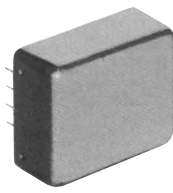


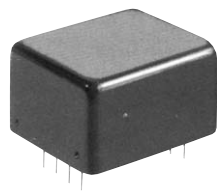
Audio Transformers



TpAs Type



TpB Type

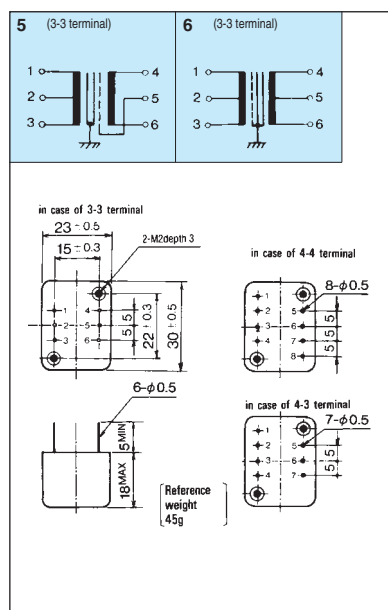


TpC Type

- Dielectric strength: AC250Vr.m.s. 1 minute
- Insulation resistance: DC250V 500MΩ MIN.
- Minimum ordering quantity: 5pcs

stock mark	Catalog No.	Impedance (Ω)		Frequency		Maximum Operation level	Turns Ratio	Case connection diagram	Remarks
		Pri.	Sec.	Range (Hz)	Response (dB)				
Tp SERIES Transformers for mounting on P.C. Board									
●	TpAs-201	300CT	600CT	30 ~ 20K	±0.2	5dBm		TpAs 6	For HYB matching.
●	TpAs-202	600CT	600CT	30 ~ 20K	±0.2	5dBm		TpAs 6	
●	TpAs-203	600CT	10KCT	30 ~ 20K	±0.2	5dBm		TpAs 6	
●	TpAs-1S	600CT	1.2K (OPEN)	30 ~ 20K	±0.3	7dBm	1 : 1.41	TpAs 5	For Pre-amplifier Input.
●	TpAs-2S	600CT	7K	30 ~ 20K	±0.25	7dBm	1 : 4.00	TpAs 5	For Regulating amplifier Input.
●	TpAs-10S	600CT	10K	30 ~ 20K	±0.25	7dBm	1 : 4.61	TpAs 5	
●	TpAs-3S	10KCT	7K	30 ~ 20K	±0.25	7dBm	1 : 0.975	TpAs 5	For Regulating Amplifier Input.
●	TpB-1	70	600CT 150 split	30 ~ 20K	±0.25	18dBm	1 : 2.93	TpB 51	For Pre-amplifier output.
●	TpB-2	600	600CT 150 split	30 ~ 20K	±0.2	13dBm	1 : 1.00	TpB 51	For 1000Hz Oscillator output.
●	TpB-202	600CT 150 split	600CT 150 split	30 ~ 20K	±0.2	10dBm		TpB 34	
●	TpB-203	600CT 150 split	10KCT 2.5K split	30 ~ 20K	±0.2	10dBm		TpB 34	
●	TpC-5	5	(Third) 5 600CT 150 split	30 ~ 20K	±0.2	2W	1 : 10.9	TpC 34	
●	TpC-1	10	(Third) 10 600CT 150 split	30 ~ 20K	±0.25	30dBm	1 : 7.75	TpC 34	For Regulating amplifier (1W) output.
●	TpC-2	20	(Third) 20 600CT 150 split	30 ~ 20K	±0.25	30dBm	1 : 5.53	TpC 34	For limiting amplifier output.
●	TpC-8	60	(Third) 40 600CT 150 split	30 ~ 20K	±0.25	25dBm	1 : 3.75	TpC 34	
●	TpC-202	600CT 150 split	600CT 150 split	30 ~ 20K	±0.2	15dBm		TpC 34	

TpAs Type Case/SCHMATIC



TpB & TpC Type Case/SCHMATIC

