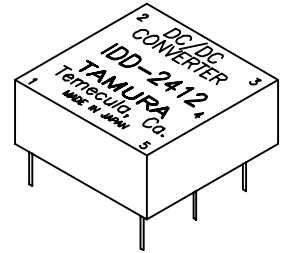


DC/DC CONVERTER 0.5W ±12V

A. Electrical Specifications

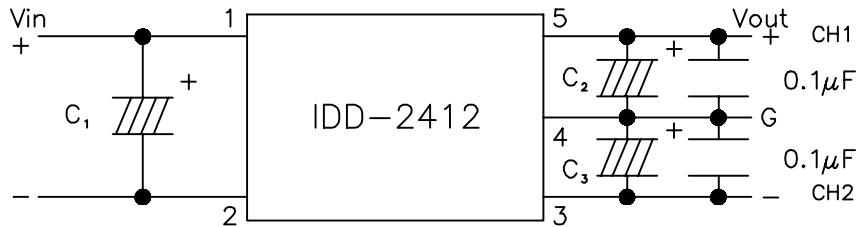
- | | |
|----------------------------|--|
| 1. Input Voltage | 19.2-28.8Vdc (Rating 24V) |
| | CH1 CH2 |
| 2. Output Voltage | 12V±0.24 -12V±0.24 |
| 3. Output Current | 6.25-21mA 6.25-21mA |
| 4. Output Ripple | 50mVp-p TYP. at 22µF for output cap.
Recommend low ESR. |
| 5. Line Regulation | ±1% MAX. |
| 6. Load Regulation | 7% MAX. |
| 7. Temperature coefficient | ±0.03%/°C |
| 8. Efficiency | 55% MIN. |
| 9. Output short protection | Built-in auto-reset protection |
| 10. Operating temperature | -10°C+70°C |
| 11. Storage temperature | -30°C+85°C |
| 12. Operating humidity | 95% RH MAX. without condensation |
| 13. Dielectric strength | DC500V 1 MIN. Input-Output, Case |
| 14. Insulation resistance | 50MΩ MIN. at DC500V |

MODEL NUMBER
IDD-2412



B. Marking; IDD-2412, TAMURA, Temecula Ca, date code and country of origin

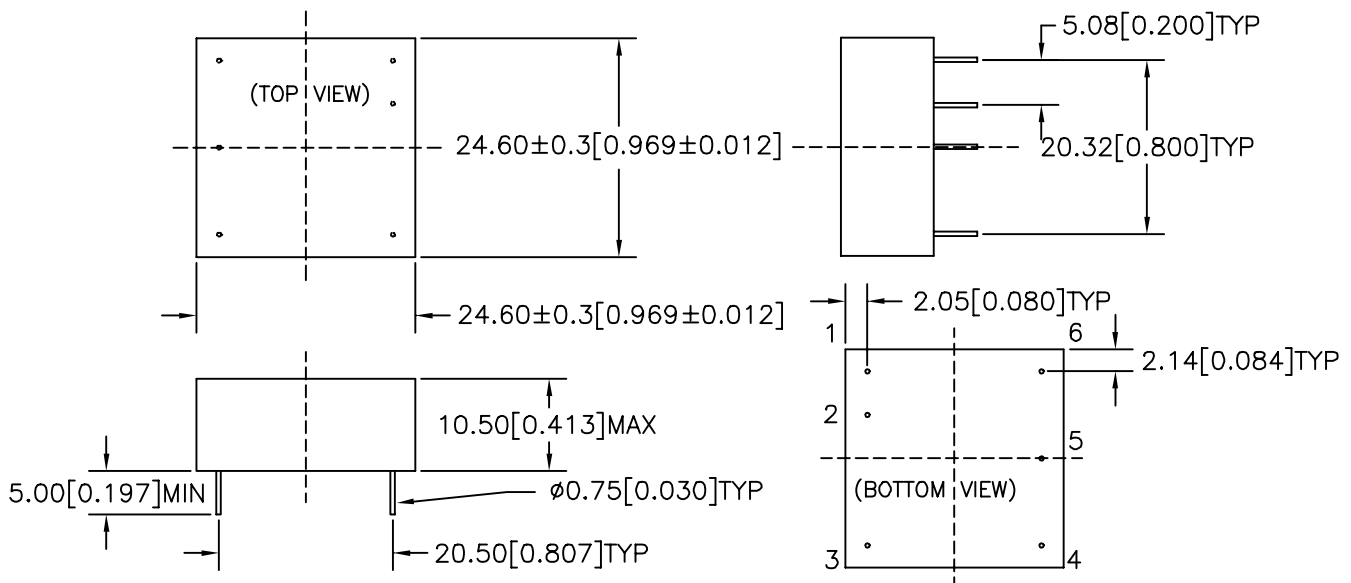
C. Schematic



External Capacitor
C1, C2 22µF / 25V
C3, C4 47µF / 16V
Recommended

D. Mechanical specification

- | | |
|---------------------------|--|
| 1. Outline dimensions | 24.60[0.969] x 24.60[0.969] x 10.50[0.413]MAX |
| 2. Soldering pin diameter | ∅0.75mm |
| 3. Vibration | 15G or max stroke 1.52mm whichever is smaller
10-2000Hz |
| 4. Shock | 50G half-sine wave |



PREPARED BY:

D. Rund
ENGINEER:

DWG CONTROL NO.
P-A3-12543
ACAD\MISCX\A3125431.DWG

REV
-

DC/DC CONVERTER
0.5W 24Vin ±12Vout

IDD-2412

QUALITY CONTROL:

CONTENTS OF THIS DRAWING ARE
SUBJECT TO CHANGE WITHOUT
PRIOR NOTICE

TAMURA CORPORATION OF AMERICA
43352 BUSINESS PARK DRIVE, TEMECULA, CA. 92590-6624
(909) 699-1270 FAX 9096769482

MODEL SPECIFICATION

DIM: mm(In) SCL: 2/1 SH: 1 OF 1

D. Kelley
APPROVED:

PROPRIETARY NOTICE: THIS DRAWING PRINT OR DOCUMENT AND SUBJECT MATTER DISCLOSED HEREIN ARE PROPRIETARY ITEMS TO WHICH TAMURA
RETAINS THE EXCLUSIVE RIGHT OF DISSEMINATION, REPRODUCTION, MANUFACTURE AND SALE. THIS DRAWING, PRINT OR DOCUMENT IS SUBMITTED IN
CONFIDENCE FOR CONSIDERATION BY THE RECIPIENT ALONE UNLESS PERMISSION FOR FURTHER DISCLOSURE IS EXPRESSLY GRANTED IN WRITING.

D. Kelley