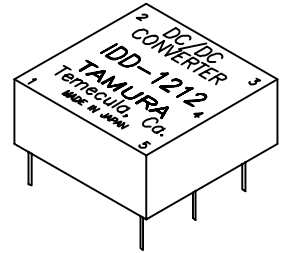


DC/DC CONVERTER 0.5W ±12V

A. Electrical Specifications

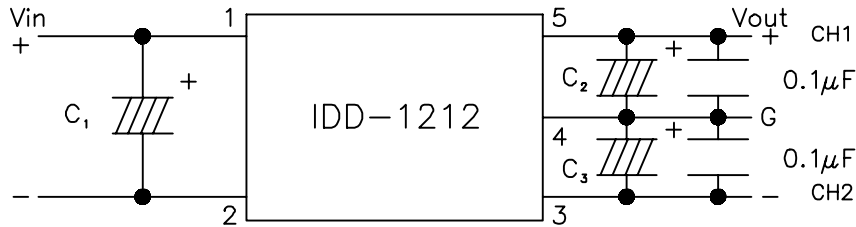
- |                            |  |
|----------------------------|--|
| 1. Input Voltage           | 9.6-14.4Vdc (Rating 12V)                                   |
|                            | CH1 CH2  |
| 2. Output Voltage          | 12V±0.24 -12V±0.24   |
| 3. Output Current          | 6.25-21mA 6.25-21mA  |
| 4. Output Ripple           | 50mVp-p TYP. at 22µF for output cap.<br>Recommend low ESR. |
| 5. Line Regulation         | ±1% MAX.   |
| 6. Load Regulation         | 7% MAX.  |
| 7. Temperature coefficient | ±0.03%/°C  |
| 8. Efficiency              | 55% MIN.   |
| 9. Output short protection | Built-in auto-reset protection                             |
| 10. Operating temperature  | -10°C+70°C   |
| 11. Storage temperature    | -30°C+85°C   |
| 12. Operating humidity     | 95% RH MAX. without condensation                           |
| 13. Dielectric strength    | DC500V 1 MIN. Input-Output, Case                           |
| 14. Insulation resistance  | 50MΩ MIN. at DC500V  |

MODEL NUMBER  
**IDD-1212**



B. Marking; IDD-1212, TAMURA, Temecula Ca, date code and country of origin

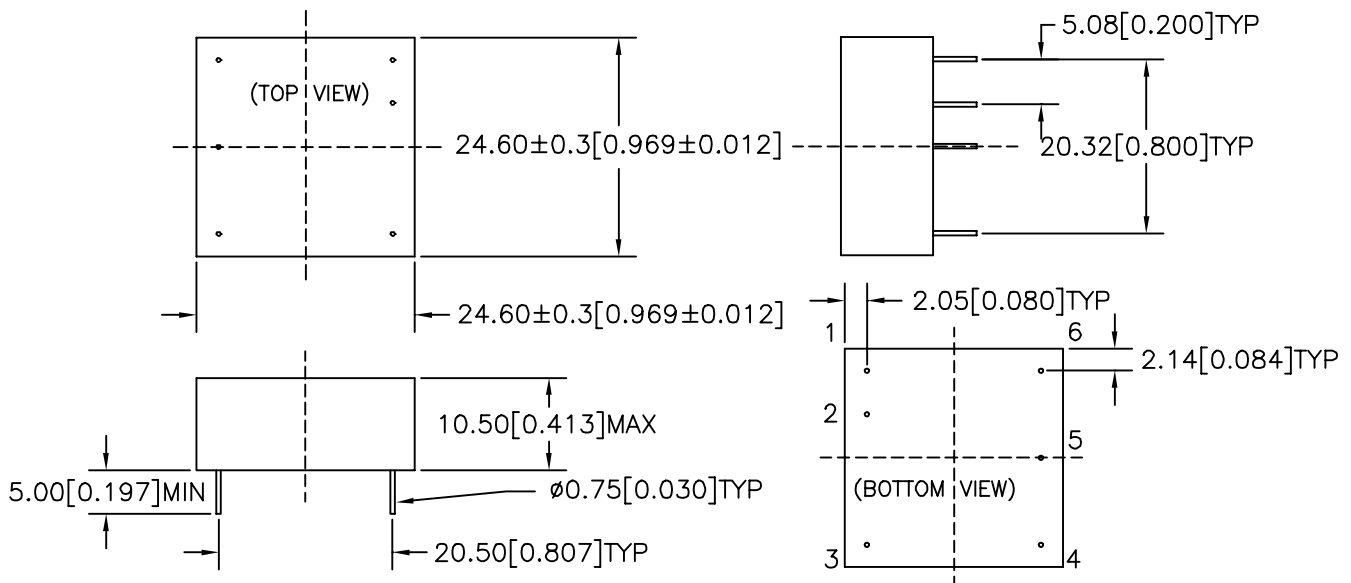
C. Schematic



External Capacitor  
C1, C2 47µF / 16V  
C3, C4 47µF / 16V  
Recommended

D. Mechanical specification

- |                           |  |
|---------------------------|--|
| 1. Outline dimensions     | 24.60[0.969] x 24.60[0.969] x 10.50[0.413]MAX              |
| 2. Soldering pin diameter | ∅0.75mm  |
| 3. Vibration              | 15G or max stroke 1.52mm whichever is smaller<br>10-2000Hz |
| 4. Shock                  | 50G half-sine wave   |



PREPARED BY:

D. Rund

ENGINEER:

DWG CONTROL NO. P-A3-12542  
ACAD\MISCX\A3125421.DWG

REV -

DC/DC CONVERTER  
0.5W 12Vin ±12Vout

**IDD-1212**

QUALITY CONTROL:

CONTENTS OF THIS DRAWING ARE SUBJECT TO CHANGE WITHOUT PRIOR NOTICE

**TAMURA CORPORATION OF AMERICA**

43352 BUSINESS PARK DRIVE, TEMECULA, CA. 92590-6624  
(909) 699-1270 FAX 9096769482

MODEL SPECIFICATION

DIM: mm(In) SCL: 2/1 SH: 1 OF 1

D. Kelley

APPROVED:

PROPRIETARY NOTICE: THIS DRAWING PRINT OR DOCUMENT AND SUBJECT MATTER DISCLOSED HEREIN ARE PROPRIETARY ITEMS TO WHICH TAMURA RETAINS THE EXCLUSIVE RIGHT OF DISSEMINATION, REPRODUCTION, MANUFACTURE AND SALE. THIS DRAWING, PRINT OR DOCUMENT IS SUBMITTED IN CONFIDENCE FOR CONSIDERATION BY THE RECIPIENT ALONE UNLESS PERMISSION FOR FURTHER DISCLOSURE IS EXPRESSLY GRANTED IN WRITING.

D. Kelley