

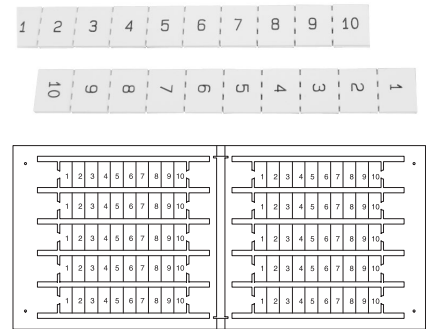
Terminal Marking Systems

Stock and custom marking solutions to meet any requirement

Whether you're marking individual terminals or terminal groups, Sprecher + Schuh's V7-W are accompanied by a wide array of marking solutions. From standard preprinted marker cards to custom marking with our EK Vario Sign software and plotter system, Sprecher + Schuh offers a tremendous variety of options for labeling any terminal assembly.

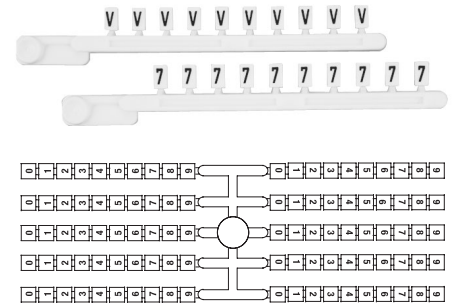
Marking Cards for all terminal types

Blank, preprinted and custom Marking Cards are available for all sizes of V7-W terminals. Preprinted selections include ten numbers in a series printed either vertically or horizontally. Custom Marking Cards are also available.



Single Digit Marking Tabs

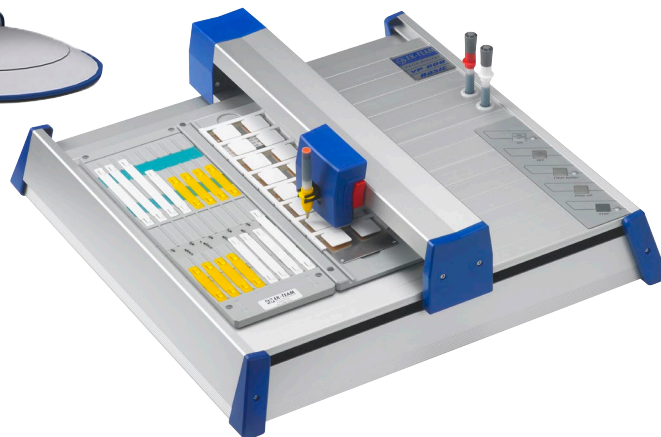
Selected V7-W terminals can be marked with Single Digit Marking Tabs. This convenient marking system is ideal for applications where professional marking is required, but time is critical. Single digit, preprinted alphanumeric characters can be mixed and matched to provide exactly the right label for any terminal.



Complete Terminal Marking System

Sprecher + Schuh's Terminal Marking System is the ultimate solution for creating custom Marking Cards with total flexibility and fast turnaround. The system comes complete with everything required to plot your own marking tags (except a Windows based PC). Two Marking Cards can be plotted at a time. That's enough tags to professionally label 200 terminals in only minutes.

Unlimited jobs can be input and stored for future plotting using Sprecher + Schuh's EK Vario Sign software, which is very intuitive and easy to learn.



N
V7 Marking & Plotter

Custom Marking Cards

All sizes of Sprecher + Schuh Marking Cards can be custom printed on our terminal plotter system. In addition to alphanumeric characters, 17 electrical symbols are also available. There are three convenient methods for obtaining custom Marking Cards:

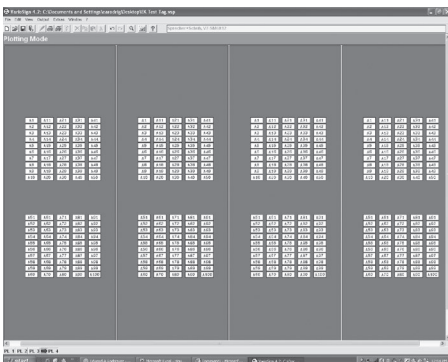
- Hand write your order on the Custom Printed Marker Cards Order Form on page N38 and fax it to us.
- Use Sprecher + Schuh's EK Vario Sign software to create your own terminal marking files and email them to us for plotting.
- Purchase our complete Terminal Marking System and plot Marking Cards any time you like!

Hand written orders

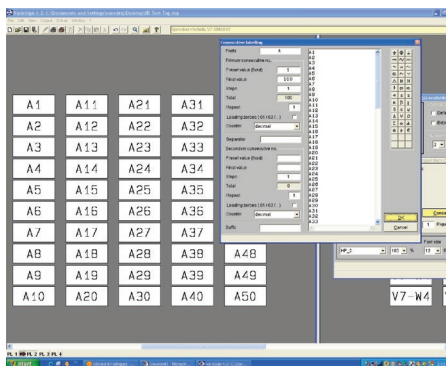
If you just have a few different cards to plot, or a lot of cards that are similar to one another, using the hand written form is very convenient. Turn to page N38 and follow the instructions for completing and sending the form to us.

EK Vario Sign software

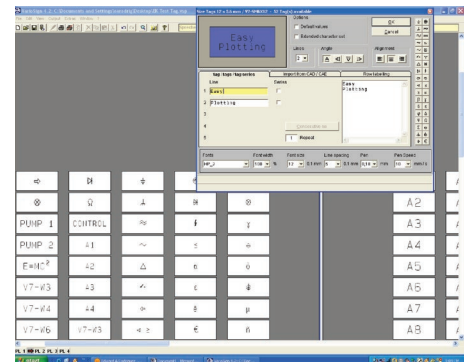
Sprecher + Schuh's EK Vario Sign software works in conjunction with our Terminal Marking System to professionally plot all sizes of Marking Cards.



EK Vario Sign software allows you to design tags for two or four Marking Cards at a time. The screen looks exactly like the plotting surface on the Terminal Marking System.



Zoom-in on one card at a time to input individual marking tags... you can also identify a starting tag and ending tag to "autofill" a range of numbers.



Zoom-in further for "fine tuning" of each marking tag. Adjust spacing left, right, up or down and vary type size to fill each tag with the largest possible type.

Marker Coordination Table (refer to this table to determine marker size and type)

Terminal Type	Marking Card Size and Type						Marking Tab Size and Type	
	5 X 5mm V7-SM5X5	5 X 9mm V7-SM5X9	5 X 12mm V7-SM5X12	6 X 9mm V7-SM6X9	6 X 12mm V7-SM6X12	8 X 12mm V7-SM8X12	6mm V7-MP	5mm V7-MP5
CA7-FMA2 (tag carrier)					■		■	■
V7-W3		■	■					■
V7-W4					■		■	
V7-W6					■		■	
V7-W10						■		
V7-W16S					■		■	
V7-W35					■		■	
V7-W70 / WG70					■		■	
V7-W3TW		■						■
V7-WR3		■						■
V7-WD3		■						■
V7-WD4				■			■	
V7-WD6					■		■	
V7-WFB10V / WFB10VA					■		■	
V7-WG4					■		■	
V7-WG6					■		■	
V7-WG10S						■		
V7-WG16					■		■	
V7-WG35					■		■	
V7-WKD3		■						■
V7-WKD3TP		■						■
V7-WKD6					■		■	
V7-W4P					■		■	
V7-W4PTP					■		■	
V7-CP4 (component plug)	■							
V7-WDP4				■			■	
V7-WDG4P				■			■	
V7-WFB4 / 24 / 250				■ ①		■ ②		
V7-H4 / 5 / 6 / 7						■		
V7-WTF3 / LN / LP		■						■
V7-WTS3 / LN / LP		■						■
V7-WD4C / DF / DR				■			■	
V7-WTC3 / J / K / T		■						■
V7-EA35					■			
V7-ER35						■		

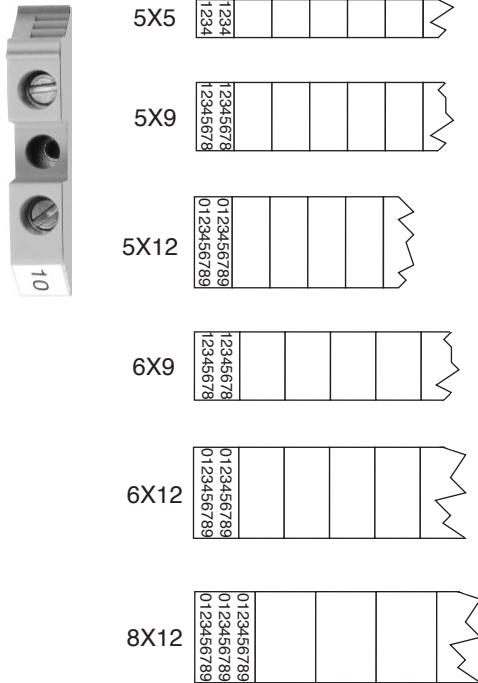
① Use this size for marking fuse terminal handle.

② Use this size for marking fuse terminal base.

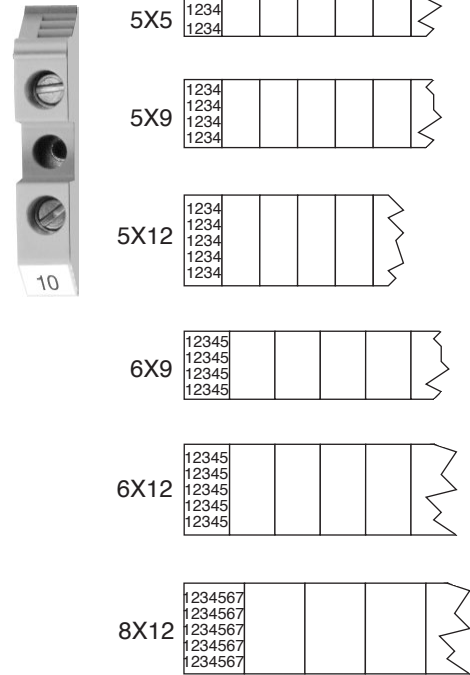
Marking Card Examples

These illustrations show the approximate actual size of all terminal markers in both vertical and horizontal orientations. The maximum number of rows and characters is also shown for each marker size.

Vertically Oriented Markers

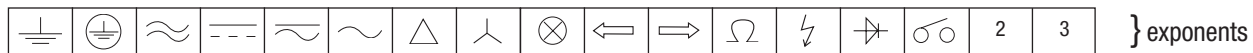


Horizontally Oriented Markers

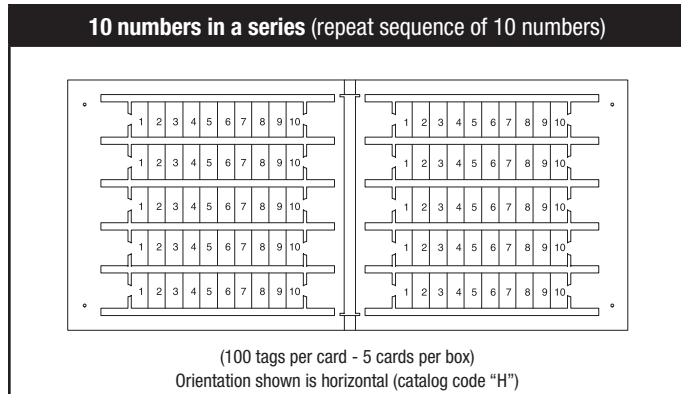


Available Marking Symbols

The following symbols can be marked on an individual tag by Sprecher + Schuh's EK Vario Sign system. Draw the symbol desired (in the correct orientation) on the marker card order form.



Marker Cards



Description	Catalog Number	Price (Per card)	Std. Pkg.
Marker Cards - Blank or preprinted. Refer to Marker Coordination Table (p. N33) to determine tag size required for terminal.			
Blank Cards 5 x 5mm 5 x 9mm 5 x 12mm 6 x 9mm 6 x 12mm 8 x 12mm	V7-SM5X5 V7-SM5X9 V7-SM5X12 V7-SM6X9 V7-SM6X12 V7-SM8X12	6.19	5 ①
Custom Marking Cards Charge per card for custom marking. Price includes Marking Card.	See pages N38 for information on custom marking	16.50	1

Catalog Number Codes

Tag Size Code (replace "▼")		
Code	Width (mm)	Height (mm)
5X5	5	5
5X9	5	9
5X12	5	12
6X9	6	9
6X12	6	12
8X12	8	12

Orientation (replace "*")	
Code	Direction
H	Horizontal
V	Vertical



Horizontal Marking



Vertical Marking

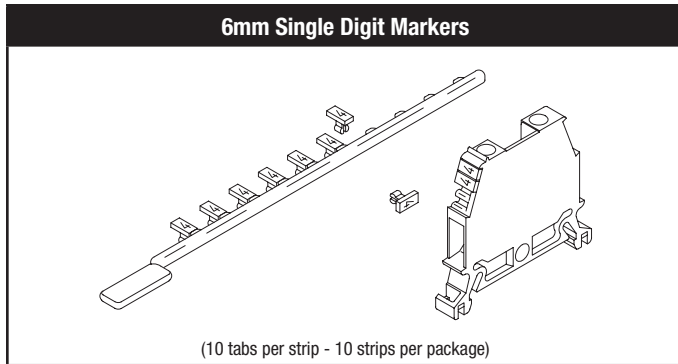
Ordering Instructions

<ul style="list-style-type: none"> Refer to the Marker Coordination Table on page N33 to determine the tag size required for your terminal type Specify catalog number 	See code tables on this page for codes
<ul style="list-style-type: none"> Replace (▼) With Tag Size Code Replace (*) With Orientation Code 	

Description	Catalog Number	Price (Per card)	Std. Pkg.
Preprinted, 10 numbers in a series (see pages N38 for information on custom marking)			
"1 - 10"	V7-SM▼*01	6.19	1
"11 - 20"	V7-SM▼*02		
"21 - 30"	V7-SM▼*03		
"31 - 40"	V7-SM▼*04		
"41 - 50"	V7-SM▼*05		
"51 - 60"	V7-SM▼*06		
"61 - 70"	V7-SM▼*07		
"71 - 80"	V7-SM▼*08		
"81 - 90"	V7-SM▼*09		
"91 - 100"	V7-SM▼*10		
"101 - 110"	V7-SM▼*11	6.19	1
"111 - 120"	V7-SM▼*12		
"121 - 130"	V7-SM▼*13		
"131 - 140"	V7-SM▼*14		
"141 - 150"	V7-SM▼*15		
"151 - 160"	V7-SM▼*16		
"161 - 170"	V7-SM▼*17		
"171 - 180"	V7-SM▼*18		
"181 - 190"	V7-SM▼*19		
"191 - 200"	V7-SM▼*20		
"201 - 210"	V7-SM▼*21	6.19	1
"211 - 220"	V7-SM▼*22		
"221 - 230"	V7-SM▼*23		
"231 - 240"	V7-SM▼*24		
"241 - 250"	V7-SM▼*25		
"251 - 260"	V7-SM▼*26		
"261 - 270"	V7-SM▼*27		
"271 - 280"	V7-SM▼*28		
"281 - 290"	V7-SM▼*29		
"291 - 300"	V7-SM▼*30		
"301 - 310"	V7-SM▼*31	6.19	1
"311 - 320"	V7-SM▼*32		
"321 - 330"	V7-SM▼*33		
"331 - 340"	V7-SM▼*34		
"341 - 350"	V7-SM▼*35		
"351 - 360"	V7-SM▼*36		
"361 - 370"	V7-SM▼*37		
"371 - 380"	V7-SM▼*38		
"381 - 390"	V7-SM▼*39		
"391 - 400"	V7-SM▼*40		
"401 - 410"	V7-SM▼*41	6.19	1
"411 - 420"	V7-SM▼*42		
"421 - 430"	V7-SM▼*43		
"431 - 440"	V7-SM▼*44		
"441 - 450"	V7-SM▼*45		
"451 - 460"	V7-SM▼*46		
"461 - 470"	V7-SM▼*47		
"471 - 480"	V7-SM▼*48		
"481 - 490"	V7-SM▼*49		
"491 - 500"	V7-SM▼*50		

① Sold only in unbroken packages. For example quantity of one V7-SM6X12 = one box of 5 cards. Price is per card, or 12.00 x 5 = 60.00.

Single Digit Marker Tabs, 6mm



Description	Catalog Number	Price (Per card)	Std. Pkg.
Single Digit Marker Tabs - For selected Series V7-W terminals only. Refer to Marker Coordination Table on page N33 to determine the tag size for your terminal type.			
Blank tabs	V7-MP-BLANK	1.39	10 ☉
Preprinted, single digit (custom marking not available)			
"0"	V7-MP-0 ❶		
"1"	V7-MP-1		
"2"	V7-MP-2		
"3"	V7-MP-3		
"4"	V7-MP-4		
"5"	V7-MP-5	1.39	10 ☉
"6"	V7-MP-6		
"7"	V7-MP-7		
"8"	V7-MP-8		
"9"	V7-MP-9		
"0...9"	V7-MP		

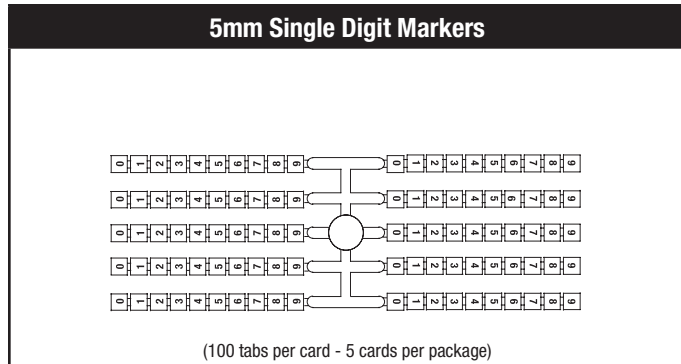
Description	Catalog Number	Price (Per card)	Std. Pkg.
Preprinted, single letter (custom marking not available)			
"A"	V7-MP-A		
"B"	V7-MP-B		
"C"	V7-MP-C		
"D"	V7-MP-D		
"E"	V7-MP-E		
"F"	V7-MP-F		
"G"	V7-MP-G		
"H"	V7-MP-H		
"I"	V7-MP-I		
"J"	V7-MP-J		
"K"	V7-MP-K		
"L"	V7-MP-L		
"M"	V7-MP-M	1.39	10 ☉
"N"	V7-MP-N		
"P"	V7-MP-P		
"Q"	V7-MP-Q		
"R"	V7-MP-R		
"S"	V7-MP-S		
"T"	V7-MP-T		
"U"	V7-MP-U		
"V"	V7-MP-V		
"W"	V7-MP-W		
"X"	V7-MP-X		
"Y"	V7-MP-Y		
"Z"	V7-MP-Z		
Preprinted, symbols			
"+"	V7-MP-POS		
"⊥"	V7-MP-GND		
"_"	V7-MP-NEG	1.39	10 ☉
"~"	V7-MP-AC		
"="	V7-MP-DC		

Ordering Instructions

- Refer to the Marker Coordination Table on page N33 to determine the tag size required for your terminal type
- Specify catalog number

- ❶ Use this tag for letter "0".
- ❷ Sold only in unbroken packages. For example quantity one of V7-MP-6 = one box of 10 cards. Price is per card, or 2.70 x 10 = 27.00.

Single Digit Marker Tabs, 5mm



Description	Catalog Number	Price (Per card)	Std. Pkg.
Single Digit Marker Tabs - For selected Series V7-W terminals only. Refer to Marker Coordination Table on page N33 to determine the tag size for your terminal type.			
Blank tabs	V7-MP5-BLANK	5.41	5 ☉
Preprinted, single digit (custom marking not available)			
"0"	V7-MP5-0 ❶	5.41	5 ☉
"1"	V7-MP5-1		
"2"	V7-MP5-2		
"3"	V7-MP5-3		
"4"	V7-MP5-4		
"5"	V7-MP5-5		
"6"	V7-MP5-6		
"7"	V7-MP5-7		
"8"	V7-MP5-8		
"9"	V7-MP5-9		
"0...9"	V7-MP5-10		
"A"	V7-MP5-A		
"B"	V7-MP5-B		
"C"	V7-MP5-C		
"D"	V7-MP5-D		
"E"	V7-MP5-E		
"F"	V7-MP5-F		
"G"	V7-MP5-G		

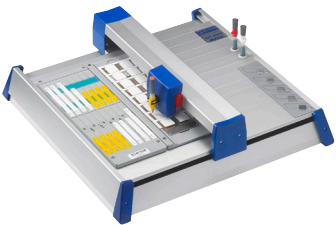
Description	Catalog Number	Price (Per card)	Std. Pkg.		
"H"	V7-MP5-H	5.41	5 ☉		
"I"	V7-MP5-I				
"J"	V7-MP5-J				
"K"	V7-MP5-K				
"L"	V7-MP5-L				
"M"	V7-MP5-M				
"N"	V7-MP5-N				
"P"	V7-MP5-P				
"Q"	V7-MP5-Q				
"R"	V7-MP5-R				
"S"	V7-MP5-S				
"T"	V7-MP5-T				
"U"	V7-MP5-U				
"V"	V7-MP5-V				
"W"	V7-MP5-W				
"X"	V7-MP5-X				
"Y"	V7-MP5-Y				
"Z"	V7-MP5-Z				
Preprinted, symbols					
"+"	V7-MP5-POS			5.41	5 ☉
"⊥"	V7-MP5-GND				
"_"	V7-MP5-NEG				
"~"	V7-MP5-AC				
"="	V7-MP5-DC				

Ordering Instructions




- Refer to the Marker Coordination Table on page N33 to determine the tag size required for your terminal type
- Specify catalog number

- ❶ Use this tag for letter "0".
- ❷ Sold only in unbroken packages. For example quantity one of V7-MP5-0 = one box of 5 cards. Price is per card, or 10.50 x 5 = 52.50.

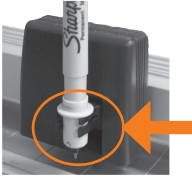



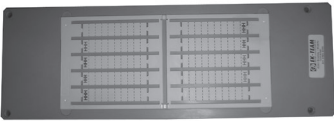
V7 Plotter System

Marking System	Description	Catalog Number	Price	Std. Pkg.	Weight
	<p>Complete Half Size Terminal Marking System: Includes:</p> <ul style="list-style-type: none"> • Plotter and USB Cable • EK Vario Sign Software CD-ROM • (1) V7-DISPEN25 Disposable Pen size .25 mm and (1) V7-DISPEN35 Disposable Pen size .35 mm • (2) Base Plates (holds up to two V7-SM... cards, purchase Marking Cards separately) • User Manual <p>Minimum computer system requirements:</p> <ul style="list-style-type: none"> • PC (1.8 GHz min.) • 64 MB RAM, CD-ROM drive • VGA graphics adapter and monitor (256 colors, resolution 1024 x 768) • Operating system: Windows 2000, XP, 7, 8, 10, and Vista 	V7-PLTKIT2-VP6H	6,914.06	1	6 kg (13.23 lbs)

V7 Plotter Accessories

Accessory	Description	Catalog Number	Price Each	Std. Pkg.
	<p>Plotter Pen-R and Adaptor - Includes plotter pen and unfilled ink cartridge. Plotter pen accepts ink cartridges V7-PLINKCART.</p> <p>Pen Width 0.25 mm</p> <p>Pen Width 0.35 mm</p>	<p>V7-PLPEN25</p> <p>V7-PLPEN35</p>	179.77	1
	<p>Disposable P2.0 Ink Cartridges - Attaches to V7-PLPEN for convenient refill of Plotter Pen. (List Price includes 5 ink cartridges per package)</p>	V7-PLINKCART	65.45	5
	<p>Disposable Ink Pen ED-R - Plotter pen tip, black ink.</p> <p>Pen Width 0.25 mm</p> <p>Pen Width 0.35 mm</p>	<p>V7-DISPEN25</p> <p>V7-DISPEN35</p>	94.03	1

V7 Plotter Accessories

Accessory	Description	Catalog Number	Price Each	Std. Pkg.
 <p>V7-ADP</p>	<p>Adapter for Sharpie® Marker - Adapter for use with Sharpie brand Ultra-fine permanent markers (marker not sold by Sprecher+Schuh).</p>	V7-ADP	24.89	1
	<p>Plotter Pen Cleaning Set - The set consists of a cleaning unit and the pen cleaner, which enables two V7-PLPEN plotter pens to be cleaned. The cleaning unit can be used for up to ten cleaning cycles. ❶</p>	V7-PLCLEAN	48.86	1
	<p>Cleaning Solution- Plotter Pen cleaning solution for V7-PLPEN. ❶</p>	V7-PLSOLN	24.89	1
	<p>Plotter Service Kit for V7-PLTKIT2-VP6H</p>	V7-PLOTSERV	82.05	1
	<p>Sprecher + Schuh universal support plate.</p>	V7-SSPLATE	961.52	1

❶ Recommended for maintaining refillable pen life (V7-PLPEN_).