








Load monitoring basis Current range 20 A / 40 °C Control voltage 24 V DC for semiconductor relay / contactor Output NO

product brand name	SIRIUS
product designation	load monitoring, basis
manufacturer's article number	
<ul style="list-style-type: none"> • _1 of the accessories that can be ordered 	3RF2900-0RA88
product designation	
<ul style="list-style-type: none"> • _1 of the accessories that can be ordered 	sealable end cover
General technical data	
product function	solid-state relay / solid-state contactor 3RF2
power loss [W] for rated value of the current without load current share typical	0.6 W
insulation voltage rated value	600 V
degree of pollution	3
shock resistance acc. to IEC 60068-2-27	15g / 11 ms
vibration resistance acc. to IEC 60068-2-6	2g
design of the switching function	transistor
reference code acc. to IEC 81346-2	B
Substance Prohibitance (Date)	01.05.2012 00:00:00
Main circuit	
number of poles for main current circuit	0
number of NO contacts for main contacts	0
number of NC contacts for main contacts	0
type of voltage	DC
operating frequency rated value	50 ... 60 Hz
relative symmetrical tolerance of the operating frequency	10 %
operational current	
<ul style="list-style-type: none"> • at AC-51 rated value 	20 A
derating temperature	40 °C
Control circuit/ Control	
type of voltage	DC
<ul style="list-style-type: none"> • control supply voltage at DC rated value 	18 ... 30 V
control supply voltage 1	
<ul style="list-style-type: none"> • at DC rated value 	24 V
<ul style="list-style-type: none"> • at DC 	24 V
control supply voltage at DC full-scale value for signal<0> recognition	5 V
control current at minimum control supply voltage	
<ul style="list-style-type: none"> • at DC 	2 mA

control current at DC rated value	25 mA	
Auxiliary circuit		
number of NC contacts for auxiliary contacts	0	
number of NO contacts for auxiliary contacts	0	
number of CO contacts for auxiliary contacts	0	
Installation/ mounting/ dimensions		
fastening method	clip-on	
• side-by-side mounting	Yes	
height	101.5 mm	
width	22.5 mm	
depth	67 mm	
Connections/ Terminals		
type of electrical connection	screw-type terminals	
• for auxiliary and control circuit		
type of connectable conductor cross-sections		
• for auxiliary and control contacts		
— solid	1x (0.5 ... 2.5 mm ²), 2x (0.5 ... 1.0 mm ²)	
— finely stranded with core end processing	1x (0.5 ... 2.5 mm ²), 2x (0.5 ... 1.0 mm ²)	
— finely stranded without core end processing	1x (0.5 ... 2.5 mm ²), 2x (0.5 ... 1.0 mm ²)	
• at AWG cables for auxiliary and control contacts	1x (AWG 20 ... 12)	
• tightening torque for auxiliary and control contacts with screw-type terminals	0.5 ... 0.6 N·m	
• tightening torque [lbf·in] for auxiliary and control contacts with screw-type terminals	4.5 ... 5.3 lbf·in	
design of the thread of the connection screw of the auxiliary and control contacts	M3	
stripped length of the cable for auxiliary and control contacts	7 mm	
UL/CSA ratings		
Safety related data		
protection class IP on the front acc. to IEC 60529	IP20	
touch protection on the front acc. to IEC 60529	finger-safe, for vertical contact from the front	
Ambient conditions		
installation altitude at height above sea level maximum	1 000 m	
• ambient temperature during operation	-25 ... +60 °C	
• ambient temperature during storage	-55 ... +80 °C	
Electromagnetic compatibility		
conducted interference		
• due to burst acc. to IEC 61000-4-4	2 kV / 5 kHz behavior criterion 2	
• due to conductor-earth surge acc. to IEC 61000-4-5	2 kV behavior criterion 2	
• due to conductor-conductor surge acc. to IEC 61000-4-5	1 kV behavior criterion 2	
• due to high-frequency radiation acc. to IEC 61000-4-6	140 dBuV in the frequency range 0.15 ... 80 MHz, behavior criterion 1	
electrostatic discharge acc. to IEC 61000-4-2	4 kV contact discharging / 8 kV air discharging, behavior criterion 2	
conducted HF interference emissions acc. to CISPR11	Class A for industrial environment	
field-bound HF interference emission acc. to CISPR11	Class B for the domestic, business and commercial environments	
Short-circuit protection, design of the fuse link		
Certificates/ approvals		
General Product Approval	EMC	Declaration of Conformity
		
		
		Miscellaneous
Test Certificates	other	

Further information

Information- and Downloadcenter (Catalogs, Brochures,...)

<https://www.siemens.com/ic10>

Industry Mall (Online ordering system)

<https://mall.industry.siemens.com/mall/en/en/Catalog/product?mlfb=3RF2920-0FA08>

Cax online generator

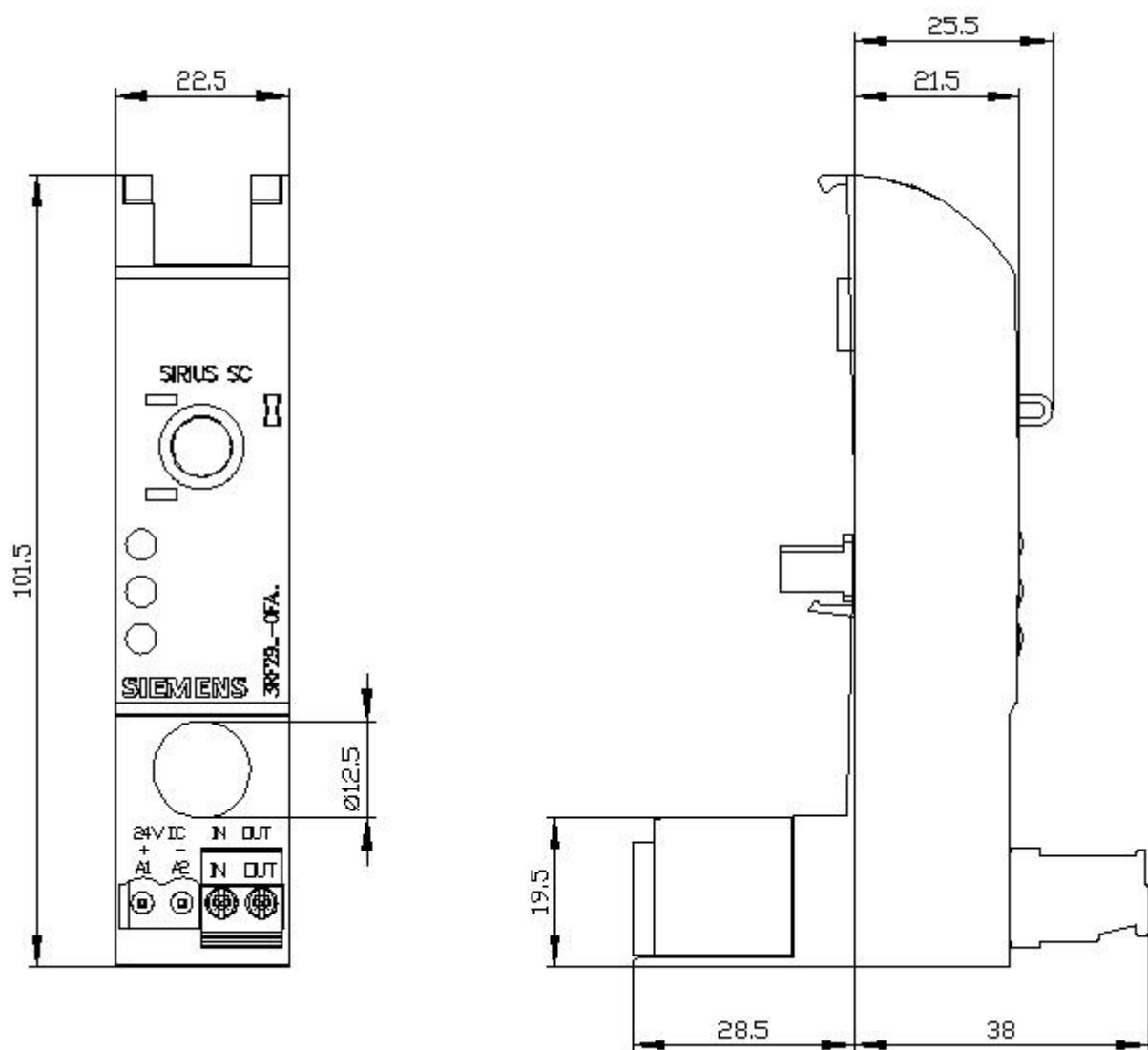
<http://support.automation.siemens.com/WW/CAXorder/default.aspx?lang=en&mlfb=3RF2920-0FA08>

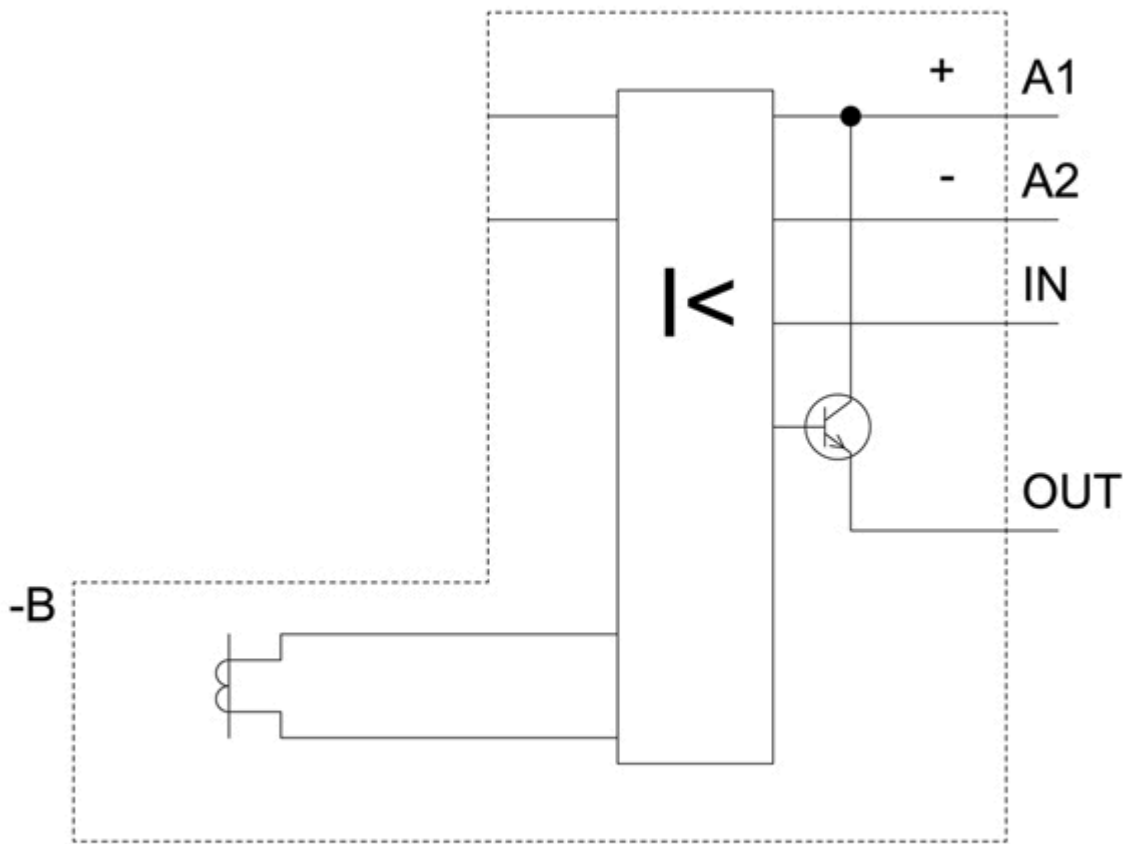
Service&Support (Manuals, Certificates, Characteristics, FAQs,...)

<https://support.industry.siemens.com/cs/ww/en/ps/3RF2920-0FA08>

Image database (product images, 2D dimension drawings, 3D models, device circuit diagrams, EPLAN macros, ...)

http://www.automation.siemens.com/bilddb/cax_de.aspx?mlfb=3RF2920-0FA08&lang=en





last modified:

3/17/2021 