

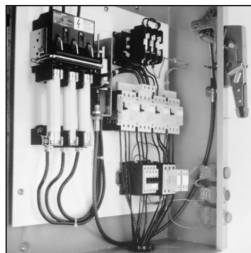
Disconnect Switches

Type MCS (30-200A)—Switches, Fuse and No Fuse Kits

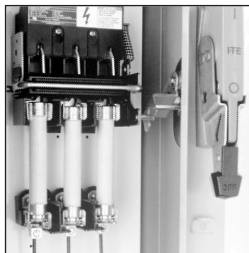
Selection

Features

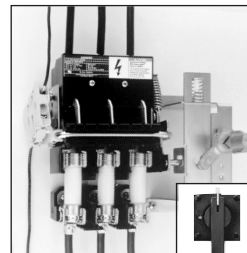
- 30, 60, 100 and 200 Ampere Switches
- UL Recognized and CSA Certified
- Simple Mounting — with an integral switch and over center mechanism
- Meets UL98 standards for branch and service entrance applications
- Compact Size
- Visible Blade Contacts
- Rugged Construction — with a short circuit current rating of 200,000 amps at 600V maximum AC, when fused with class R or class J fuses
- Available with three operator handle options, allowing flexible placement of switch
- Field Installable Auxiliary Contacts
- Flexible Fuse Class Configurations



Type MCS Disconnect Switch with Max-Flex™ handle operator



Type MCS Disconnect Switch with fixed-depth, flange-mounted handle



Type MCS Disconnect Switch with rotary handle

Ordering Information

- Select the basic switch size you need (30, 60, 100 or 200 ampere).
- Check the switch selected against the maximum horsepower rating required for your application. "L" or "R" suffix on switch catalog numbers denotes left or right-handed mechanism drive.
- Choose either fuse or no fuse kit from chart below.
- Check "Minimum Dimensions" on page 11/88 for installation space requirements.
- Select from the list of handle operators, the type which best suits your application. Handle operators can be selected from the next page.

Basic Switches

Switch Ampere Rating	Maximum Voltage Rating	Catalog Number Right Hand	Catalog Number Left Hand	Maximum Horsepower Rating, 3 Phase						250 Volts DC (max)	List Price \$
				240 Volts AC		480 Volts AC		600 Volts AC			
				Standard Fuse	Time Delay Fuse	Standard Fuse	Time Delay Fuse	Standard Fuse	Time Delay Fuse		
30	600	MCS603R	MCS603L	3	7½	5	15	7½	20	5	
60	600	MCS606R	MCS606L	7½	15	15	30	15	50	10	
100	600	MCS610R	MCS610L▲	15	30	25	60	30	75	20	
200	600	MCS620R	MCS620L▲	25	60	50	125	60	150	40	

Fuse And No Fuse Kits (Includes load base plus line and load fuse clips)①

Basic Switch Ampere Rating	Switch Catalog Number	Kit Description	No Fuse Kits				For Class H		For Class J		For Class R		Lug Wire Size
			Standard		Cu Only②		Catalog Number ①	List Price \$	Catalog Number ①	List Price \$	Catalog Number ①	List Price \$	
			Catalog Number	List Price \$	Catalog Number	List Price \$							
30	MCS603R or MCS603L	No Fuse	TMK606		—	—	—	—	—	—	—	#14 to #4 AWG Cu/Al	
		30A, 250V	—	—	—	FCK203▲	—	—	FCRK203	—	#14 to #4 AWG Cu/Al		
		30A, 600V	—	—	—	FCK206	—	FCJK603	FCRK206	—			
		60A, 250V	—	—	—	FCK206	—	FCJK606	FCRK206	—			
60	MCS606R or MCS606L	No Fuse	TMK606		—	—	—	—	—	—		—	#14 to #4 AWG Cu/Al
		60A, 250V	—	—	—	FCK206	—	—	FCRK206	—			
		60A, 600V	—	—	—	FCK606	—	FCJK606	FCRK606	—			
		100A, 250V	—	—	—	OFCK661▲	—	OFCK661▲	OFCK661▲	③			
100	MCS610R or MCS610L	No Fuse	TMK610		TMK610C	—	—	—	—	—	—	#14 to #2/0 AWG Cu/Al	
		100A, 250V	—	—	—	FCK610	—	—	FCRK610	—			
		100A, 600V	—	—	—	FCK610	—	FCJK610	FCRK610	—			
		200A, 250V	—	—	—	OFCK620	—	OFCK620	OFCK620	③			
200	MCS620R or MCS620L	No Fuse	TMK620		TMK620C▲	—	—	—	—	—	—	#6 to 300 kcmil Cu/Al	
		200A, 250V	—	—	—	FCK620	—	—	FCRK620	—			
		200A, 600V	—	—	—	FCK620	—	FCJK620	FCRK620	—			
		400A, 250V	—	—	—	—	—	—	—	③			

▲ Built to order. Allow 6–8 weeks for delivery.

① For "copper only" connectors, order as follows:

Fusible—order standard switch, standard fuse kit and copper only no fuse kit.

Non-Fusible—order standard switch and copper only no fuse kit.

② Includes both line and load lugs.

③ For Class R fuses order Class H kit from this table and the Class R conversion kit from the next page.

Discount Schedule F

Disconnect Switches

Type MCS (30-200A)—Accessories

Selection

Auxiliary Switch Kits

Switch Catalog Number	Contact Arrangement			
	1 NO/1 NC		2 NO/2 NC	
	Catalog Number	List Price \$	Catalog Number	List Price \$
MCS603R	MCSAKR136		MCSAKR236	
MCS603L	MCSAKL136		MCSAKL236▲	
MCS606R	MCSAKR136		MCSAKR236	
MCS606L	MCSAKL136		MCSAKL236▲	
MCS610R	MCSAK116		MCSAK216	
MCS610L	MCSAK116		MCSAK216	
MCS620R	MCSAK126		MCSAK226	
MCS620L	MCSAK126		MCSAK226	

Class R Fuse Conversion Kits

Fuse Clip Rating	Catalog Number	List Price Each \$
100A, 600V	SSRK33	
200A, 600V	SSRK34	
400A, 600V	SSRK35	

Fuse Ejector Kits

Switch Catalog Number	Fuse Ejector Kit Catalog Number	List Price Each \$
MCS610	FE100▲	
MCS620	FE200▲	

Handle Operators

Fixed Depth, Flange Mounted, Types 1, 3, 3R, 12^{①④}

Switch Catalog Number	Complete Handle Mechanism		Handle Only		Switch Operator Only	
	Catalog Number	List Price \$	Catalog Number	List Price \$	Catalog Number	List Price \$
MCS603R	FDFS06R		FDH10		FDS06R	
MCS603L	FDFS06L		FDH10		FDS06L	
MCS606R	FDFS06R		FDH10		FDS06R	
MCS606L	FDFS06L		FDH10		FDS06L	
MCS610R	FDFS06R		FDH10		FDS06R	
MCS610L	FDFS06L		FDH10		FDS06L	
MCS620R	FDFS20R		FDH20		FDS20R	
MCS620L	FDFS20L		FDH20		FDS20L	

Variable Depth, Flange Mounted Max-Flex™, Types 1, 3, 3R, 12^②

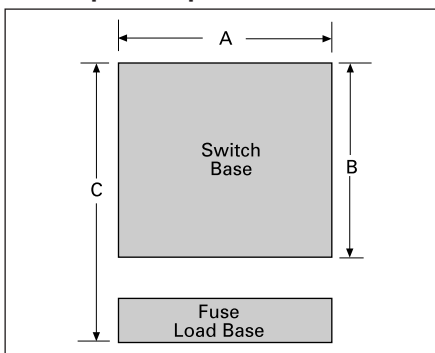
Switch Catalog Number	Complete Handle Mechanism		Handle Only		Switch Operator Only		Cable Only ^③	
	Catalog Number	List Price \$	Catalog Number	List Price \$	Catalog Number	List Price \$	Catalog Number	List Price \$
MCS603R	FHOS06036R		FHOHS		FHOS06R		FHOEC036	
MCS603L	FHOS06036L		FHOHS		FHOS06L		FHOEC036	
MCS606R	FHOS06036R		FHOHS		FHOS06R		FHOEC036	
MCS606L	FHOS06036L		FHOHS		FHOS06L		FHOEC036	
MCS610R	FHOS06036R		FHOHS		FHOS06R		FHOEC036	
MCS610L	FHOS06036L		FHOHS		FHOS06L		FHOEC036	
MCS620R	FHOS20036R		FHOHS		FHOS20R		FHOJC036	
MCS620L	FHOS20036L		FHOHS		FHOS20L		FHOJC036	

Variable Depth Rotary, Through-The-Door-Mounted, Types 1, 12^{④⑤}

Variable Depth						Shaft Only Variable Depth		
MCS603R	CRHOS06VD		CRHOH		RHOS06		RHOSVD	
MCS606R	CRHOS06VD		CRHOH		RHOS06		RHOSVD	
MCS610R	CRHOS06VD		CRHOH		RHOS06		RHOSVD	
MCS620R	CRHOS20VD		CRHOH		RHOS20		RHOSVD	

MCS Disconnect Switch Panel Space Requirements

Panel Space Requirements



Minimum Dimensions (inches*)

Switch Catalog Number	Size	Minimum Dimensions (inches*)			Fuse Class
		"A"	"B"	"C"	
MCS603	30A/240V	6.13	5.52	8.11	H, K, R
	30A/600V	6.13	5.52	10.11	H, K, R
	30A/600V	6.13	5.52	8.48	J
MCS606	60A/240V	6.13	5.52	7.86	H, K, R
	60A/600V	6.13	5.52	10.38	H, K, R
	60A/600V	6.13	5.52	8.35	J
MCS610	100A/240V	7.38	7.59	11.85	H, K, R
	100A/600V	7.38	7.59	13.85	H, K, R
	100A/600V	7.38	7.59	10.6	J
MCS620	200A/240V	9.17	9.00	14.7	H, K, R
	200A/600V	9.17	9.00	17.2	H, K, R
	200A/600V	9.17	9.00	13.32	J

"A" – Dimension is measured from each cross bail pin.

"B" – Dimension is measured from line side barrier to load side barrier.

"C" – Dimension is measured from line side terminal of switch to load side terminal of fuse load base.

▲ Built to order. Allow 6–8 weeks for delivery.
 ① For Type 4 and 4X applications, order handle only Catalog Number 100A - FDH104
 200A - FDH204
 ② For Type 4 and 4X applications, order handle only Catalog Number FHOHS4.

③ Standard cable length is 36 inches. Alternate lengths are available as follows:

Length	Amps	Cat. No.	List Price
24"	30–100	FHOEC024	
48"	30–100	FHOEC048	
60"	30–100	FHOEC060	
48"	200	FHOJC048	
60"	200	FHOJC060	

④ For Type 4 and 4X applications, order handle only Catalog Number RHOH4.

⑤ For Type 3 and 3R applications, order handle only Catalog Number RHOH.

⑥ Min. enclosure depth from mounting pan to handle mounting surfaces: 30–100A 6.44 inches
 200A 10.93 inches

*For millimeters multiply inches by 25.4.