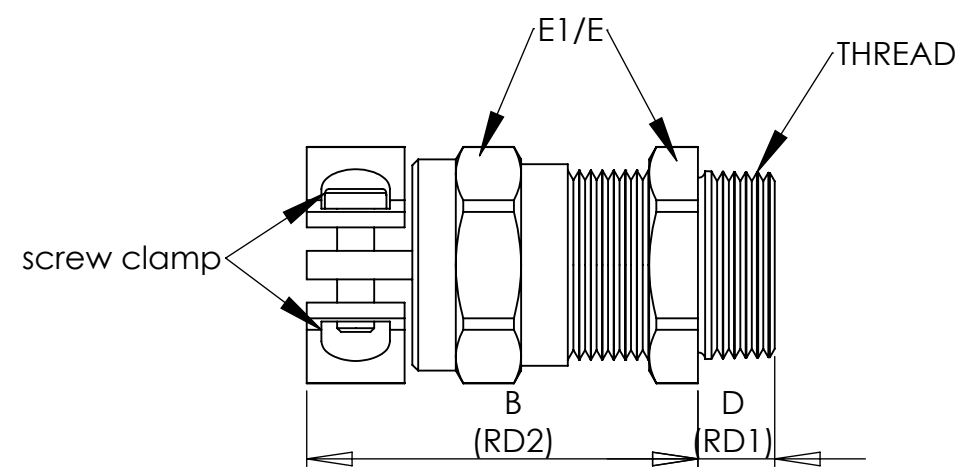


SPECIFICATIONS:

Pressure rating:
150 PSIG (10 BAR) NEMA 4x and 6
(Submersible) IP68

Materials:
Body & Clamping Nut: Nickel Plated Brass
Splined Bushing: Nylon 6/6
Form Seal: Buna-N
O-Ring(Optional): Buna-N
Operating Temperature:
-40°F to 212°F (-40°C to 100°C)

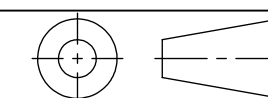


PART NUMBERS	CABLE RANGE inches (mm)	THREAD TYPE AND SIZE For thread specs see page 29	DIMENSIONS INCHES (MM)			
			A Clearance Hole $+0.015^{+0.25mm}$ 0	B Body Height Clamp Fittings	D Thread Length Fittings	E1/E Wrenching Flats
CD12MA-MZ	.11 - .26 (3 - 6.5)	M12 x 1,5	.49 (12.0)	1.02(26)	.20 (5)	.55 (14)
CD07AA-MZ	.11 - .26 (3 - 6.5)	PG 7	.49 (12.5)	1.02(26)	.20 (5)	.55 (14)
CD09AA-MZ CD09NA-MZ	.16 - .31 (4 - 8) .16 - .31 (4 - 8)	PG 9 3/8" NPT	.60 (15.2) .68 (17.2)	1.10(28) 1.10(28)	.24 (6) .59 (15)	.67 (17) .67(17) / .75(19)
CD16MA-MZ CD17MA-MZ	.16 - .31 (4 - 8) .24 - .39 (6 - 10)	M16 x 1,5	.63 (16.0)	1.10(28) 1.18(30)	.24 (6)	.75 (19) .79 (20)
CD11AA-MZ	.24 - .39 (6 - 10)	PG 11	.73 (18.5)	1.18(30)	.24 (6)	.79 (20)
CD20MA-MZ CD22MA-MZ	.24 - .47 (6-12) .39 - .55 (10 - 14)	M20 x 1,5	.79 (20.0)	1.30(33)	.24 (6)	.87 (22) .94 (24)
CD13AA-MZ	.27 - .47 (7 - 12)	PG 13	.80 (20.3)	1.30(33)	.25(6.5)	.87 (22)
CD13NA-MZ	.27 - .47 (7 - 12)	1/2" NPT	.83 (21.1)	1.30(33)	.51 (13)	.87(22) / .94(24)
CD16AA-MZ	.39 - .55 (10 - 14)	PG 16	.88 (22.3)	1.30(33)	.25(6.5)	.94 (24)
CD25MA-MZ	.51 - .71 (13 - 18)	M25 x 1,5	.99 (25.0)	1.46 (37)	.27 (7)	1.18 (30)
CD21AA-MZ	.51 - .71 (13 - 18)	PG 21	1.12 (28.4)	1.46(37)	.27 (7)	1.18 (30)
CD21NA-MZ	.51 - .71 (13 - 18)	3/4" NPT	1.05 (26.7)	1.46(37)	.51 (13)	1.18 (30)
CD32MA-MZ	.71 - .98 (18 - 25)	M32 x 1,5	1.26 (32.0)	1.69(43)	.31 (8)	1.57 (40)
CD29NA-MZ	.71 - .98 (18 - 25)	1" NPT	1.35 (34.3)	1.69(43)	.75 (19)	1.57 (40)
CD29AA-MZ	.79 - .98 (20 - 25)	PG 29	1.47 (37.3)	1.69 (43)	.31 (8)	1.57 (40)
CD36AA-MZ	.94 - 1.26 (24 - 32)	PG 36	1.85 (47)	1.97 (50)	.31 (8)	1.97 (50)
CD42AA-MZ	1.26 - 1.50 (32-38)	PG 42	2.13 (54.1)	2.01 (51)	.35 (9)	2.24 (57)
CD48AA-MZ	1.46 - 1.73 (37-44)	PG 48	2.34 (59.4)	2.05 (52)	.39 (10)	2.52 (64)
CD40MA-MZ	.86 - 1.26 (22 - 32)	M40 x 1,5	1.58 (40.0)	1.97(50)	.31 (8)	1.97 (50)
CD50MA-MZ CD50MR-MZ	1.26-1.50 (32 - 38) .98 - 1.22 (25 - 31)	M50 x 1,5	1.97 (50.0)	2.01(51)	.35 (9)	2.24 (57) 2.24 (57)
CD63MA-MZ CD63MR-MZ	1.46-1.73 (37 - 44) 1.14-1.38 (29 - 35)	M63 x 1,5	2.48 (63.0)	2.05(52)	.39 (10)	2.52(64)/2.68(68) 2.52(64)/2.68(68)

NOTES:

- 1) GENERAL DIMENSIONS DRAWINGS.
- 2) DIMENSIONS [] ARE IN INCHES.
- 3) DIMENSIONS NOTED ARE FOR REFERENCE ONLY.

Third angle projection



14853 HINDSDALE AVE, SUITE D
CENTENNIAL, CO 80112-4240, USA
TEL: +1-303-699-1135
TOLL FREE: +1-800-456-9012
E MAIL: info@sealconusa.com,
WEBSITE: www.sealconusa.com

