



## Extractor handle in key form 1

Catalog Number:20817-325

[Back To Product](#)

- Front panels (item 6) available on request.
- At 6 U, the printed board location can be offset 1 HP to the right by swapping the upper and lower handles. This creates space for SMD components on the left hand side.



Products per Package:

1.0

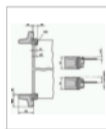
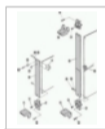
Products per Package:

1.0

[Change Item >](#)

**CHANGING AN ITEM WILL UPDATE THE CATALOG NUMBER. THIS CAN AFFECT THE LIST PRICE AND SPECIFICATION OF THE ITEM.**

### Other Views



Quantity

1

[Add Item to Project List +](#)

Description

Downloads

**Items**

Accessories

### Extractor handle in key form 1

**Catalog Number** 20817-325

**Delivery is exclusively made in Standard Pack Quantity (SPQ)** 10

**Colour** grey

**Required number at 3 U** 1.0

**Required number at 6 U** 1.0

#### EXPLORE

- About Us
- Services & Capabilities
- News and Events
- Strategic Partnerships
- Investor Relations

#### CONTACT

- Customer Service
- Find a Sales Office or Distributor
- Global Locations
- Product Compliance & Certifications
- Partner Login

#### DOWNLOAD

- Literature
- White Papers & Case Studies
- Videos & Mobile Apps
- Product Configurators
- Warranties