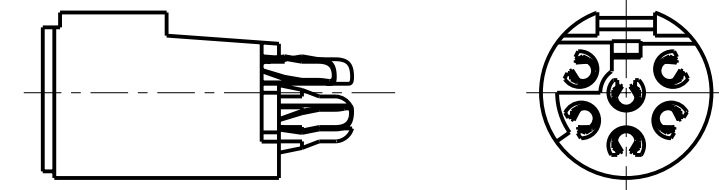
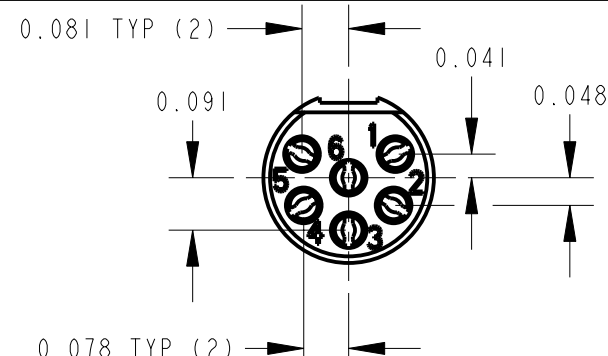
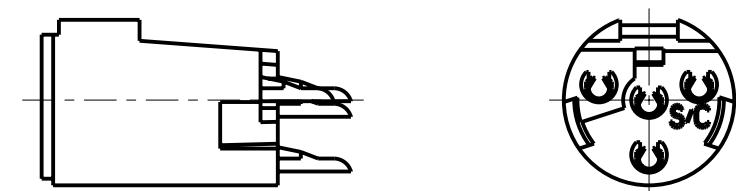
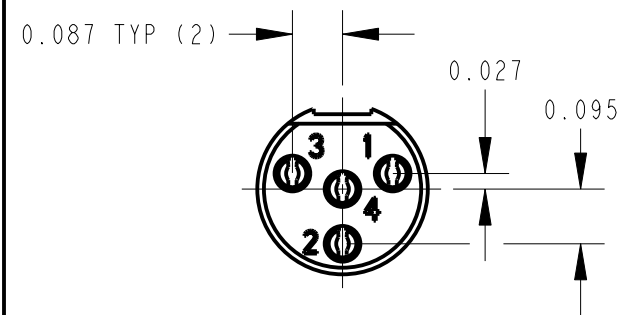


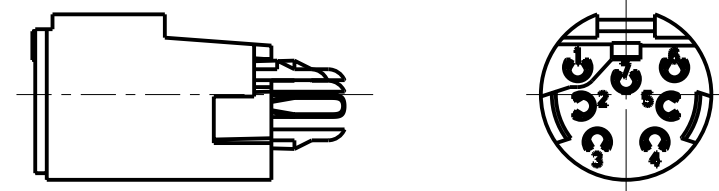
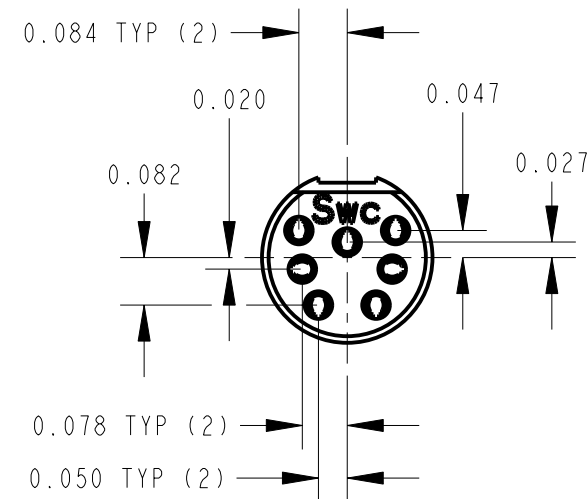
TQG3F



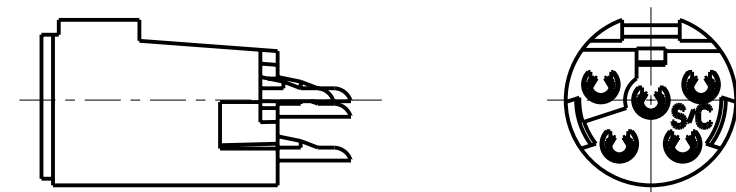
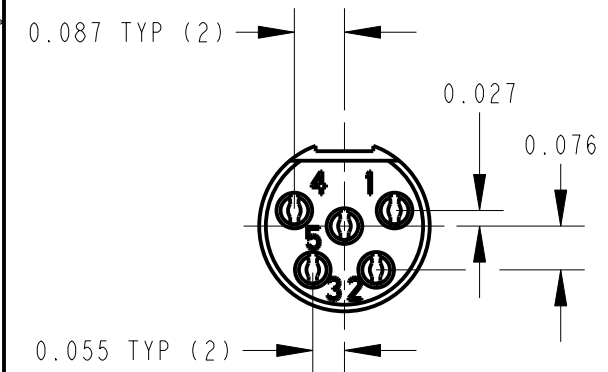
TQG6F



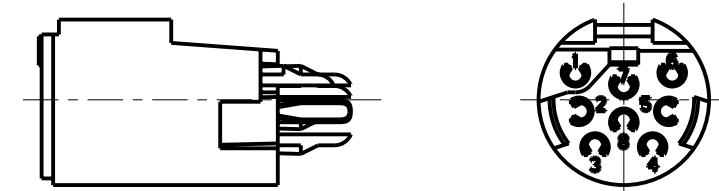
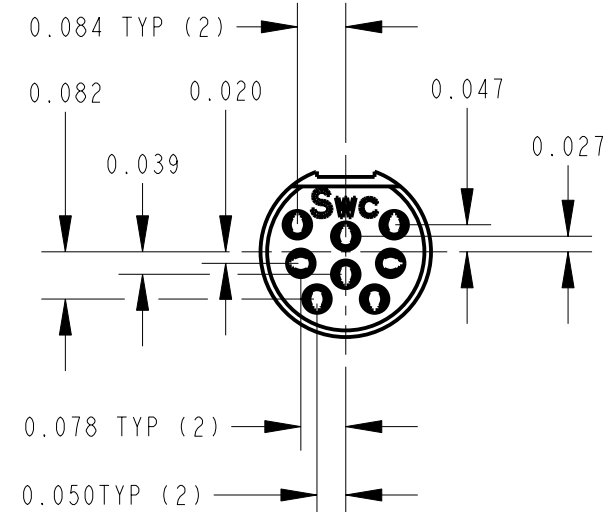
TQG4F



TQG7F



TQG5F



TQG8F

CUSTOMER DRAWING

NOTES:

1. ALL DIMENSIONS ARE FOR REFERENCE.
2. THESE PRODUCTS ARE RoHS COMPLIANT.

REV	ECO NUMBER	DATE	BY	APVD
C	ECO #25511	11-22-06	TJK	TJK
B	ECO #19704	3-24-95	RC	GHJ
A	CAD REDRAW ECO #19163	8-8-94	WJS	GHJ

REVISIONS

★ STAR SYMBOL DENOTES CRITICAL DIMENSION

UNLESS OTHERWISE SPECIFIED

1. ALL DIMENSIONS IN INCHES
- TWO PLACE DECIMALS ±0.01
- THREE PLACE DECIMALS ±0.005
- ANGLES ±1°
- ALL DIA. CONCENTRIC WITHIN 0.005 T.I.R.
2. FEATURES ON THE SAME CENTERLINE MUST BE ALIGNED WITHIN ±0.002
3. REMOVE ALL BURRS

DO NOT SCALE DRAWING

THIS DRAWING DESCRIBES A DESIGN CONSIDERED PROPRIETARY IN NATURE, DEVELOPED AND MANUFACTURED BY SWITCHCRAFT INC. AND IS RELEASED ON A CONFIDENTIAL BASIS FOR IDENTIFICATION PURPOSES ONLY.

SIZE	WIDTH	MULT	LBS/M	TEMPER
FINISH		MATERIAL		
SPEC No.		SPEC No.		
FIRST USED ON		SCALE		
		3:1		
DATE DRAWN	BY	CHKD	APVD	
22-Nov-06	WJS	WJS	GHJ	
		9-8-94	9-8-94	
NAME		PART No.		REV
FEMALE TINI-0G INSERT, RoHS		TQG_F SERIES		C

Switchcraft®

SHEET 1 OF 1