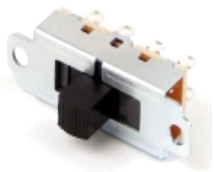


46300 Series Slide Switches, 3 Position, 3 Pole



[enlarge](#)

Standard Slide Switches (larger than 1.20"). Three-position switches offer locking-locking, momentary-momentary and locking-momentary action for talk-listen applications. All switches have positive center detent and shutter type dust cover to prevent dirt and dust from contaminating switch contacts.

Products

Specifications

[Need more info? Contact Switchcraft customer service](#)

Product	Description	Typical Mating	Layout	Drawings	Distributor Inventory
46311LDRX	SPTT Circuitry, Position #1 - Locking, Center - Locking, Position #2 - Locking		VI		check stock
46313LDRX	DPTT Circuitry, Position #1 - Locking, Center - Locking, Position #2 - Locking		2-VI		check stock
46313MDRX	DPTT Circuitry, Position #1 - Momentary, Center - Locking, Position #2 - Momentary		2-VI		check stock
46313TDRX	DPTT Circuitry, Position #1 - Locking, Center - Locking, Position #2 - Momentary		2-VI		check stock

☺ denotes a special order