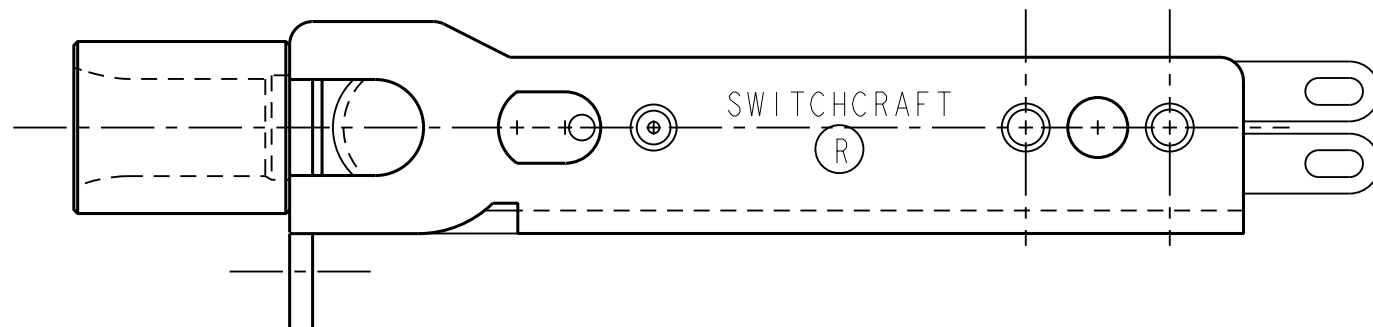
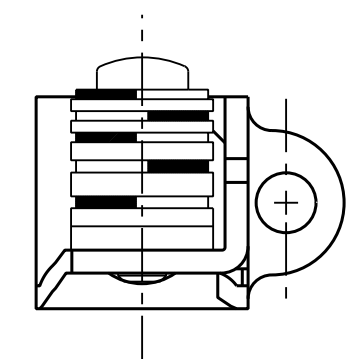
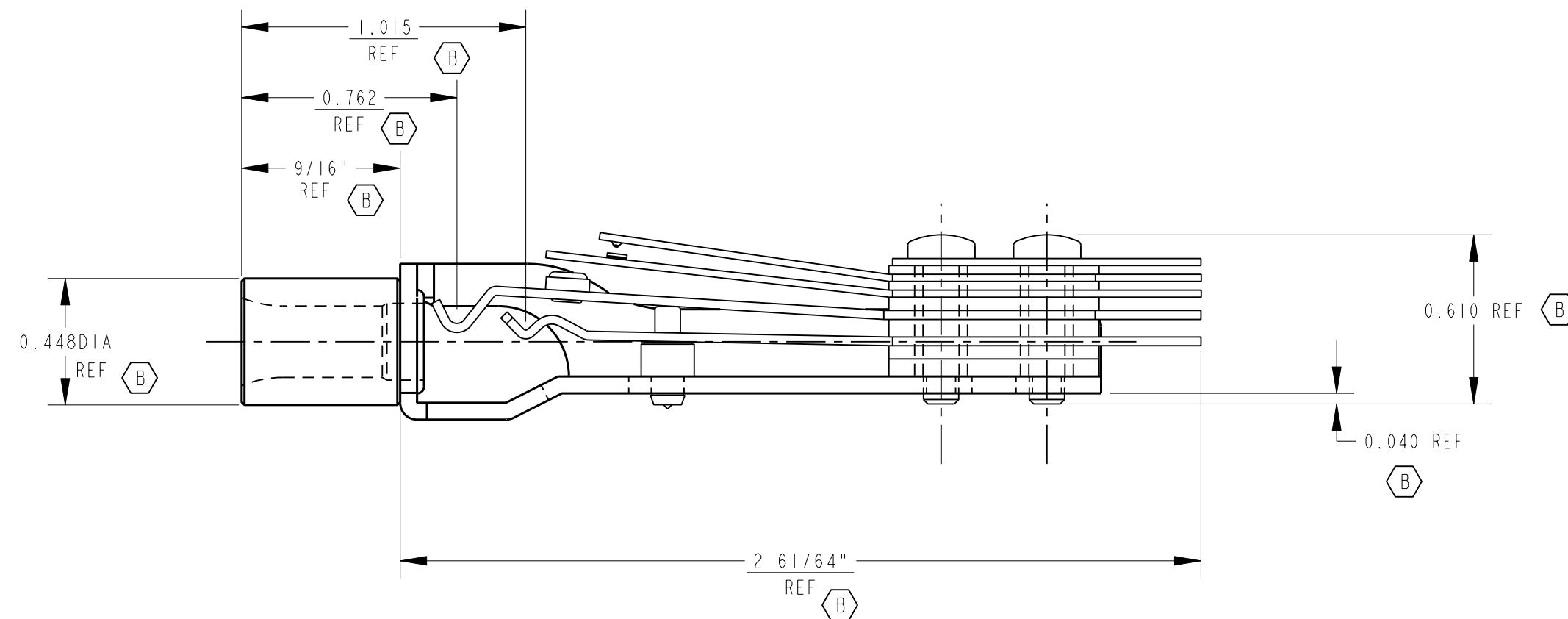
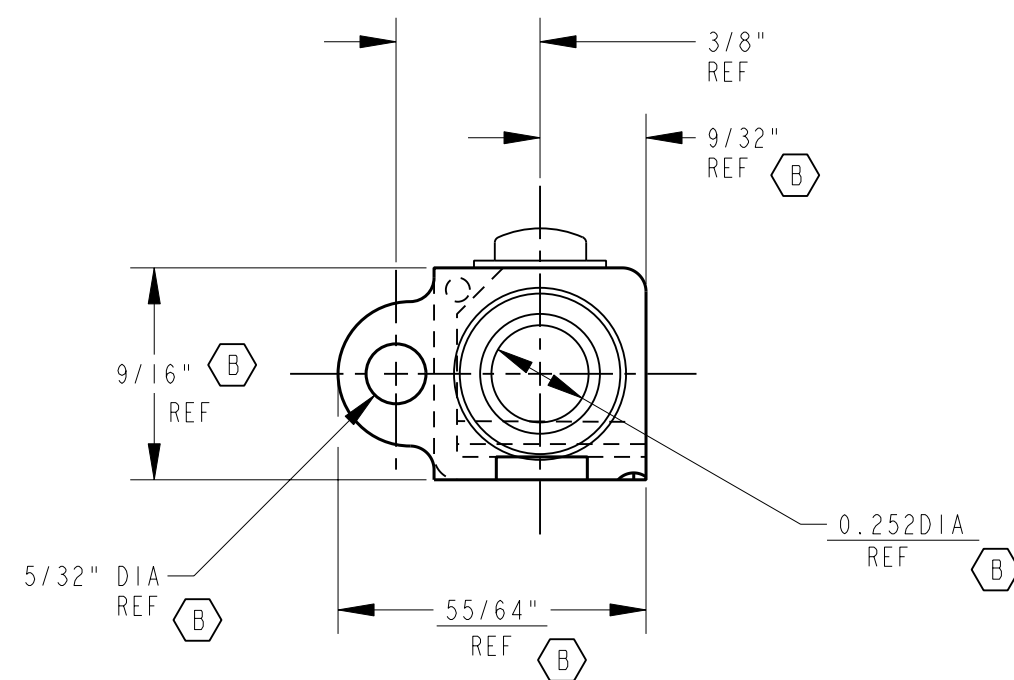
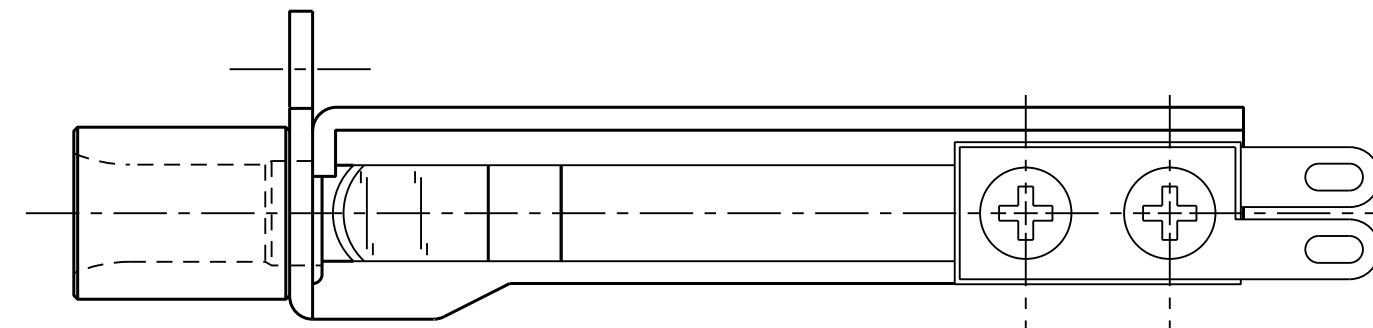
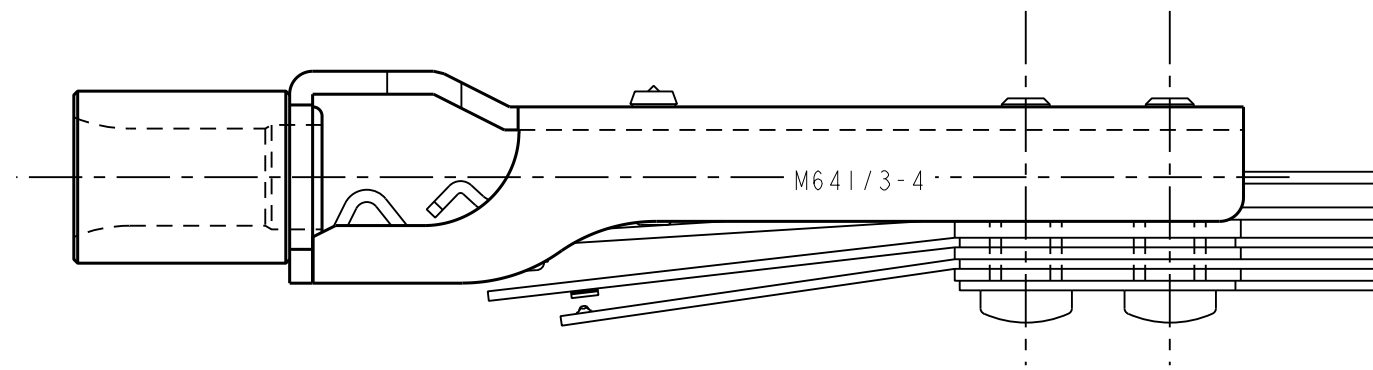


NOTES:

1. MATES WITH PJ-051 PLUG.



MATERIALS:

- FRAME - STEEL, IRIDESCENT IRIDITE FINISH
- BUSHING - BRASS, NICKEL PLATED
- SPRINGS - NICKEL SILVER - SPRING TEMPERED
- CONTACTS - WELDED CROSS BAR PALLADIUM
- SPACERS - PHENOLIC TYPE PBE-P
- LIFTER & SPRING SUPPORT - NYLON
- TERMINALS - HOT TIN DIPPED
- SCREWS - STEEL, IRIDESCENT IRIDITE FINISH

CUSTOMER DRAWING  
 CAD/CAM DWG. NO.  
 MT336\_CD  
 SHEET 1 OF 1

<p>★ STAR SYMBOL DENOTES CRITICAL DIMENSION. SEE S/C ENGINEERING STANDARD ES-0001.</p>		<p>THIS DRAWING DESCRIBES A DESIGN CONSIDERED PROPRIETARY IN NATURE, DEVELOPED AND MANUFACTURED BY SWITCHCRAFT INC. AND IS RELEASED ON A CONFIDENTIAL BASIS FOR IDENTIFICATION PURPOSE ONLY.</p>	
<p>UNLESS OTHERWISE SPECIFIED</p>		<p>SIZE</p>	<p>WIDTH</p>
<p>1. ALL DIMENSIONS IN INCHES                  TWO PLACE DECIMAL ±.01                  THREE PLACE DECIMAL ±.005                  FRACTIONAL DIMENSIONS ±1/64                  ANGLES ±1/2°                  ALL DIA'S CONCENTRIC WITHIN .005 T.I.R.</p>		<p>MULT</p>	<p>LBS./M</p>
<p>2. REMOVE ALL BURRS</p>		<p>FINISH</p>	<p>MATERIAL</p>
<p>3. MAKE NO DIMENSIONAL ALLOWANCES FOR APPLIED FINISHES, I.E., PLATING, PAINTING, ETC.</p>		<p>SPEC. NO.</p>	<p>SPEC. NO.</p>
<p>4. HOLES ON THE SAME CENTERLINE MUST BE ALIGNED WITHIN ±.002</p>		<p>FIRST USED ON</p>	<p>SCALE</p>
<p>DO NOT SCALE DRAWING</p>		<p>1 = 0.500</p>	<p>Switchcraft®</p>
<p>REVISIONS</p>		<p>DATE DRAWN</p>	<p>BY</p>
<p>ECO #21394 7/20/12 TJK TJK</p>		<p>9-17-54</p>	<p>MA</p>
<p>ECO #20664 4-25-96 DEA JF</p>		<p>CHK'D</p>	<p>APP'D</p>
<p>CAD REDRAW WAS REV. A ECO #18549 3-21-94 ES GHJ</p>		<p>LD</p>	<p>GHJ</p>
<p>ISSUE CHANGE NO. DATE BY APP'D</p>		<p>9-24-54</p>	<p>3-23-94</p>
		<p>NAME</p>	<p>PART NO.</p>
		<p>TELEPHONE JACK</p>	<p>MT336</p>
		<p>ISSUE</p>	<p>D</p>