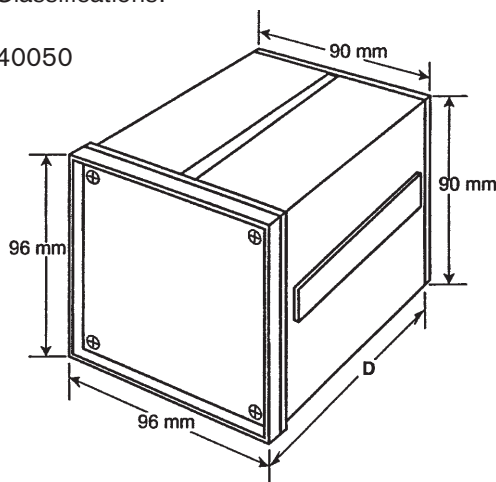


# **ANG Panel Meter Housings Product Drawings**



**TECHNICAL DATA:**

- Color—Black Powdercoat
- Material—Extruded Aluminum
- Protection Classifications:  
NEMA 4X  
IP 66, DIN 40050



**Assembly Instructions**

Housings conform to DIN 43700. Install in a panel cut-out with dimensions of 92 x 92mm + .8mm. Remove mounting bars. Insert in panel cut-out. Install mounting bars. Tighten mounting bars with set screws to secure housing in panel.

Rose+Bopla's ANG Panel Meter Housing offers NEMA 4X protection. This 1/4 DIN housing body is a hollow extrusion of heavy duty aluminum for maximum integrity with

## ANG Panel Meter Housings

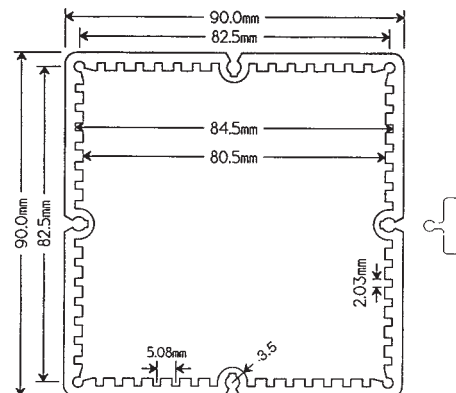
internal slotting to accommodate printed circuit boards or chassis. Gasketed, cast aluminum front and rear lids provide maximum protection. External mounting bars provide secure panel mounting in 2 or 4 positions.

ANG Panel Meter Housings offer easy maintenance benefits. The front bezel and rear lid can be taken off without removing the housing from the panel. These housings fit into pre-existing panels. Standard depths of 109.5mm and 165.5mm are available off-the-shelf in black. Custom lengths and colors can be turned around in 2 weeks or less.

ANG Panel Meter Housing comes complete with, enclosure body, mounting profiles, bezel, front frame, rear lid, 1.5 allen key, adhesive plate, screws and washers.

ANG Panel Meter Housings				
Part #	Length	Width	Height	Weight
ANG 9610	4.31/109.5	3.77/96	3.77/96	1.44 lbs.
ANG 9616	6.51/165.5	3.77/96	3.77/96	1.64 lbs.
ANG 9601	Sold in 1 meter lengths for custom sizes.			8.0 lbs.

Note: Dimensions are external. Metric is the primary dimension. Inch conversions are for the user's convenience and are for reference only.



Enclosure Profile

# Ang Housing

ANG 9610, ANG 9616, ANG 9601

External Dimensions: W 96 x H 96 mm

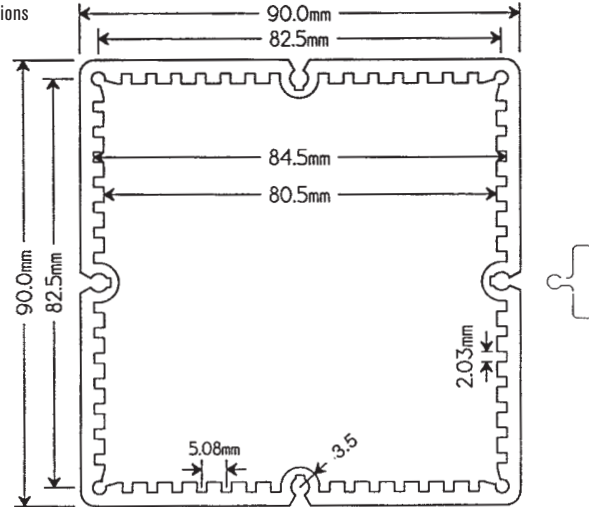
### Standard Features

- **ANG 9610** Panel Meter Housing includes: enclosure body, mounting profiles, bezel, front frame, rear lid, 1.5 allen key, adhesive plate, screws and washers. L109.5 x W96 x H96 mm.
- **ANG 9616** Panel Meter Housing includes: enclosure body, mounting profiles, bezel, front frame, rear lid, 1.5 allen key, adhesive plate, screws and washers. L105.5 x W96 x H96 mm.
- **ANG 9601** Closed aluminum extrusion, sold in meter lengths. L1000 x W90 x H90 mm.

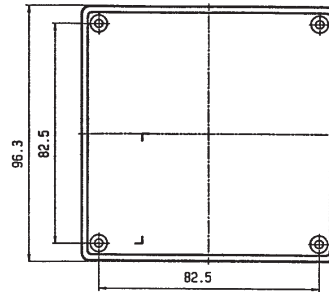
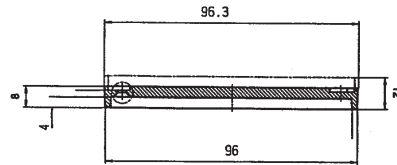
### Accessories

- **ANG 96 MPI** Aluminum Mounting Panel.
- **ANG 96 BZ** Front Bezel
- **ANG 96 FF** Front Open Frame
- **ANG 96 RL** Rear Cover
- **0202002** Replacement Lid Screws (8 required)

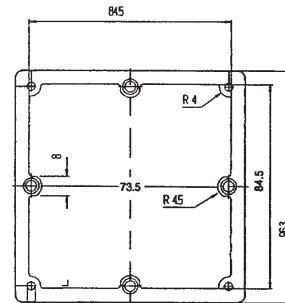
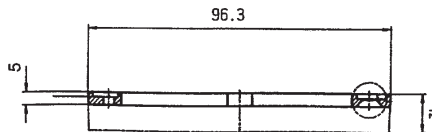
Housing Profile and Mounting Bar Dimensions



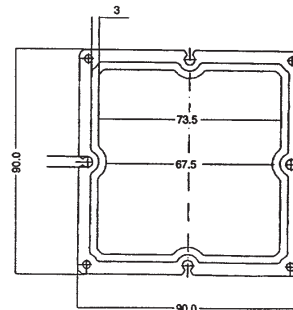
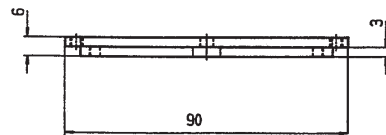
Front Bezel Dimensions/ANG 96 BZ



Front Open Frame Dimensions/ANG 96 FF



Rear Cover Dimensions/ANG 96 RL



Rose\_Special\_ANG\_en\_1111.pdf

**KLINKMANN**

www.klinkmann.com

### Helsinki

tel. +358 9 540 4940  
automation@klinkmann.fi

### Yekaterinburg

tel. +7 343 376 5393  
yekaterinburg@klinkmann.spb.ru

### Vilnius

tel. +370 5 215 1646  
post@klinkmann.lt

### St. Petersburg

tel. +7 812 327 3752  
klinkmann@klinkmann.spb.ru

### Samara

tel. +7 846 273 95 85  
samara@klinkmann.spb.ru

### Tallinn

tel. +372 668 4500  
klinkmann.est@klinkmann.ee

### Moscow

tel. +7 495 641 1616  
moscow@klinkmann.spb.ru

### Kiev

tel. +38 044 495 33 40  
klinkmann@klinkmann.kiev.ua

### Minsk

tel. +375 17 200 0876  
minsk@klinkmann.com

### Riga

tel. +371 6738 1617  
klinkmann@klinkmann.lv