

## RAFIX 22 FS<sup>+</sup>, mushroom pushbutton, latching, bezel black



### fields of application

- > Measurement-control-regulation
- > Electrical engineering
- > Mechanical and system engineering
- > Vehicle construction
- > Handheld terminals
- > Industrial robots



### description

RAFIX control components are defined by RAFI as modular elements, including of actuator element, coupling if necessary and individual contact or lighting element.

Actuators (such as pushbuttons, emergency-stop pushbuttons, etc.) have the specified tactility, reset and general function only in combination with the appropriate contact elements.

The shape and function of the mushroom pushbutton correspond to those of an emergency stop, but it has a black actuator (mushroom).

Only use with the emergency stop switching element.

The illuminated version is illuminated through a central round window.

### technical data

#### > general

illuminated	No
Bezel color	black
Collar shape	round
Operating temperature, min.	-25 °C
Operating temperature, max.	70 °C
Storage temperature, min.	-40 °C
Storage temperature, max.	80 °C
Packaging	Box

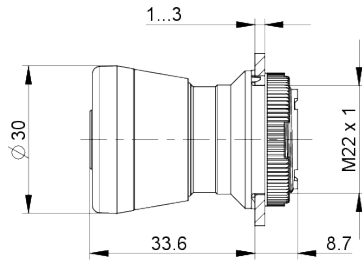
#### direct links

> [RAFI eCatalog](#)

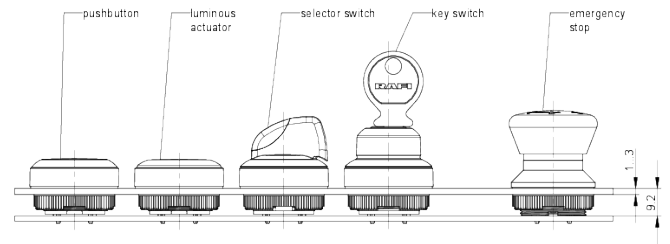
Packaging unit	2 pcs.
net weight	17 g
Environment resistance	IEC 60068-2-14 IEC 60068-2-30 IEC 60068-2-33 IEC 60068-2-78
Operating life	50,000 Cycles
B10	65,000 Cycles
Degree of protection, front side, according to DIN EN 60529	IP65
UL Enclosure Type Rating front side	type 1 type 4X
Salt-spray resistance according to standard	IEC 60068-2-11
RoHS compliant	Yes
REACH compliant	Yes
Demontage möglich	No
<b>&gt; mounting diameters</b>	
Mounting hole	22.3 mm
Mounting depth	9.2 mm
Installation height	33.2 mm
Grid, min.	35 x 35 mm
Outside dimension, length	29.8 mm
Outside dimension, width	29.8 mm
Outside dimension, height	42.1 mm
Collar dimension	ø 29,8 mm
<b>&gt; mechanical data</b>	
Actuation function	latching
Operating force, max.	100 N
Resetting	by pulling
Fixing	Threaded ring
Threaded ring torque, max.	1.2 Nm

**drawings**

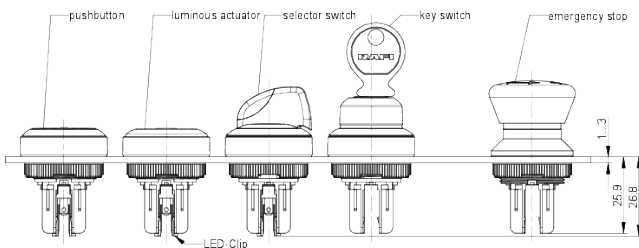
**Dimensioned drawing**



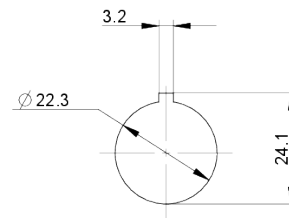
**System drawing**



**System drawing**



**Mounting hole drawing**



**front panel drawing**

