

LUMOTAST 75 IP40, keylock switch, round collar, 1 NC + 1 NO, Silver, Solder terminal, 90°, latching, key removal position 0



fields of application

- > Measurement-control-regulation
- > Mechanical and system engineering
- > Signalling systems



description

technical data

> general

illuminated	No
Collar color	black
Collar shape	round
Operating temperature, min.	-25 °C
Operating temperature, max.	70 °C
Storage temperature, min.	-40 °C
Storage temperature, max.	80 °C
Packaging	Box
Packaging unit	2 pcs.
Operating life	50,000 Cycles
Degree of protection, front side, according to DIN EN 60529	IP40
RoHS compliant	Yes
REACH compliant	Yes

> mounting diameters

Mounting hole	16.2 mm
Mounting depth	41.5 mm
Installation height	7.5 mm
Outside dimension, length	18 mm
Outside dimension, width	18 mm
Collar dimension	18 mm

direct links

- > [RAFI eCatalog](#)

> mechanical data

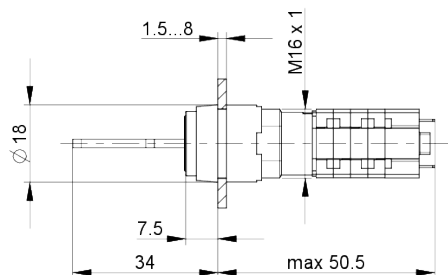
Actuation function	latching
Contact function	1 NC + 1 NO
Contact system	Bridge-snap-action contact
Contact material	Silver
Locking position	45
Number of locking positions	45
Key removal position	0
Rotating angle	90°
Fixing	Threaded ring
Terminal on the rear	Solder terminal
Lötbarkeit	Yes

> electrical data

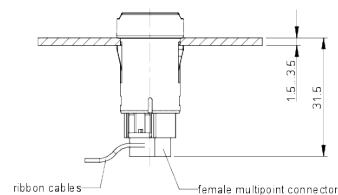
Rated voltage, min.	12 V
Rated voltage, max.	230 V
Rated current, min.	0.05 A
Rated current, max.	4 A

drawings

Dimensioned drawing

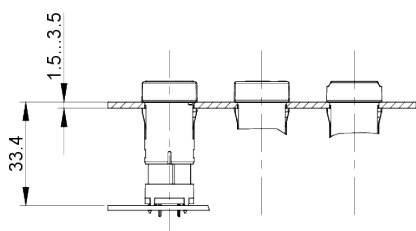


System drawing

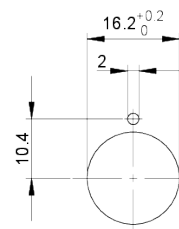


System drawing

Installation drawing with plug-in socket

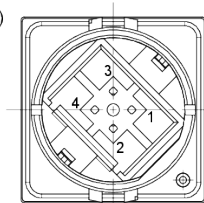


Mounting hole drawing



Connection drawing

Wiring diagram (view of component bottom)



1 + 4 = Push-button connection, 2 + 3 = Light connection when used LED: Connection 3 = Cathode