

Series SR/SRVO Snap Rivets



Patent No. 232519

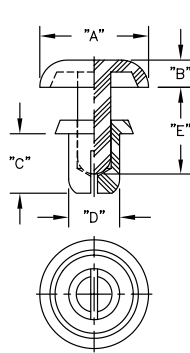


FIG. 1

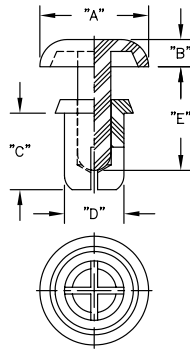


FIG. 2

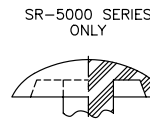
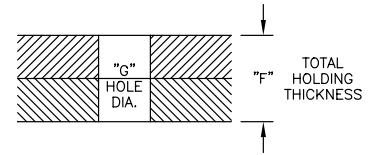


FIG. 3



Material: Nylon 6, see table for RMS#				Standard Pack: 1000 per bag									
Part No.				"G" Hole Dia.	Extraction Force LBS (KG)	"F" Thickness	"A" ±.008 (0.2)	"B" ±.008 (0.2)	"C" ±.012 (0.3)	"D"	"E" ±.012 (0.3)	Fig. No.	
SR-2024W	SR-2024B	28	V-0, RMS-87 Black	.083 (2.1) - .087 (2.2)	6.6 Min. (3 Min.)	.024 (0.6) - .047 (1.2)	.165 (4.2)	.047 (1.2)	.09 (2.4)	.079 (2.0)	.11 (2.8)	1	
SR-2032W	SR-2032B					.051 (1.3) - .079 (2.0)			.13 (3.2)		.15 (3.8)		
SR-2040W	SR-2040B					.083 (2.1) - .110 (2.8)			.16 (4.0)		.18 (4.5)		
SR-2048W	SR-2048B					.114 (2.9) - .142 (3.6)			.19 (4.8)		.22 (5.5)		
SR-2064W	SR-2064B					.173 (4.4) - .197 (5.0)			.25 (6.4)		.28 (7.1)		
SR-2632W	SR-2632B	62	—	.102 (2.6) - .106 (2.7)	11.0 Min. (5 Min.)	.039 (1.0) - .079 (2.0)	.197 (5.0)	.055 (1.4)	.13 (3.2)	.102 (2.6)	.18 (4.5)		
SR-2642W	SR-2642B					.079 (2.0) - .118 (3.0)			.17 (4.2)		.24 (6.1)		
SR-2648W	SR-2648B					.106 (2.7) - .142 (3.6)			.19 (4.8)		.28 (7.1)		
SR-2655W	SR-2655B					.134 (3.4) - .169 (4.3)			.22 (5.5)		.35 (9.0)		
SR-3035W	SR-3035B					SRV0-3035			.039 (1.0) - .079 (2.0)		.14 (3.5)		.20 (5.1)
SR-3045W	SR-3045B	SRV0-3045	.079 (2.0) - .118 (3.0)	.18 (4.5)	.24 (6.1)								
SR-3055W	SR-3055B	SRV0-3055	.118 (3.0) - .157 (4.0)	.22 (5.5)	.28 (7.1)								
SR-3065W	SR-3065B	SRV0-3065	.157 (4.0) - .197 (5.0)	.26 (6.5)	.35 (9.0)								
SR-3075W	SR-3075B	SRV0-3075	.197 (5.0) - .236 (6.0)	.30 (7.5)	.43 (11.0)								
SR-3080W	SR-3080B	SRV0-3080	.217 (5.5) - .256 (6.5)	.31 (8.0)	2								
SR-3090W	SR-3090B	SRV0-3090	.256 (6.5) - .295 (7.5)	.35 (9.0)									
SR-3100W	SR-3100B	SRV0-3100	.295 (7.5) - .335 (8.5)	.39 (10.0)									
SR-3535W	SR-3535B	28	SRV0-3535	.047 (1.2) - .083 (2.1)		.138 (3.5)	.14 (3.5)	.138 (3.5)	.20 (5.1)				
SR-3545W	SR-3545B	62	SRV0-3545	.083 (2.1) - .118 (3.0)			.18 (4.5)		.24 (6.1)				
SR-3550W	SR-3550B	SRV0-3550	.106 (2.7) - .142 (3.6)	.20 (5.0)			.28 (7.1)						
SR-3555W	SR-3555B	SRV0-3555	.118 (3.0) - .157 (4.0)	.22 (5.5)			.35 (9.0)						
SR-3560W	SR-3560B	28	SRV0-3560	.146 (3.7) - .181 (4.6)			.24 (6.0)		.36 (9.1)				
SR-3570W	SR-3570B	62	SRV0-3570	.177 (4.5) - .217 (5.5)		.315 (8.0)	.28 (7.0)	.157 (4.0)	.28 (7.1)				
SR-3580W	SR-3580B	28	SRV0-3580	.217 (5.5) - .256 (6.5)			.31 (8.0)		.35 (9.0)				
SR-4050W	SR-4050B	SRV0-4050	.098 (2.5) - .138 (3.5)	.24 (6.0)	.28 (7.1)								
SR-4060W	SR-4060B	SRV0-4060	.138 (3.5) - .177 (4.5)	.28 (7.0)	.35 (9.0)								
SR-4070W	SR-4070B	SRV0-4070	.177 (4.5) - .217 (5.5)	.35 (9.0)	.43 (11.0)								
SR-4080W	SR-4080B	62	SRV0-4080	.217 (5.5) - .256 (6.5)	.354 (9.0) See Fig. 3	.31 (8.0)	.197 (5.0)	.26 (6.5)					
SR-4090W	SR-4090B	SRV0-4090	.256 (6.5) - .295 (7.5)	.35 (9.0)		.33 (8.5)							
SR-4100W	SR-4100B	SRV0-4100	.295 (7.5) - .335 (8.5)	.39 (10.0)		.37 (9.5)							
SR-5045W	SR-5045B	SRV0-5045	.059 (1.5) - .098 (2.5)	.18 (4.5)		.26 (6.5)							
SR-5055W	SR-5055B	SRV0-5055	.098 (2.5) - .138 (3.5)	.22 (5.5)		.33 (8.5)							
SR-5065W	SR-5065B	28	SRV0-5065	.138 (3.5) - .177 (4.5)	.472 (12.0)	.30 (7.5)	.236 (6.0)	.33 (8.5)					
SR-5075W	SR-5075B	SRV0-5075	.177 (4.5) - .217 (5.5)	.33 (8.5)		.41 (10.5)							
SR-5085W	SR-5085B	SRV0-5085	.217 (5.5) - .256 (6.5)	.37 (9.5)		.47 (12.0)							
SR-5095W	SR-5095B	SRV0-5095	.256 (6.5) - .295 (7.5)	.41 (10.5)		.35 (9.0)							
SR-5105W	SR-5105B	62	SRV0-5105	.295 (7.5) - .335 (8.5)		.31 (8.0)		.39 (10.0)					
SR-6060W	SR-6060B	—	—	.240 (6.1) - .244 (6.2)	66.0 Min. (30 Min.)	.098 (2.5) - .157 (4.0)	.472 (12.0)	.098 (2.5)	.24 (6.0)	.236 (6.0)	.35 (9.0)		
SR-6080W	SR-6080B			.138 (3.5) - .217 (5.5)	.118 (3.0)	.31 (8.0)							

Color: Other colors available by special order- Replace "W" or "B" with Green (GN), Yellow (YL), Red (RD) and Blue (BL)