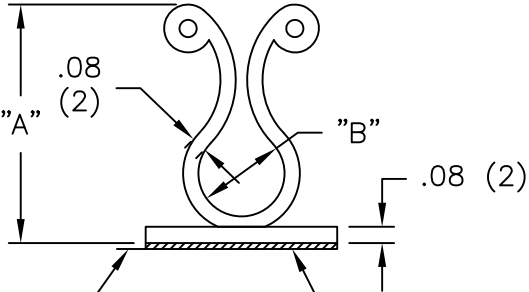
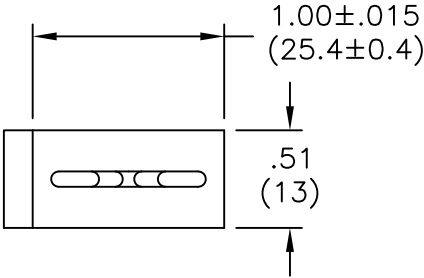


| PART NO. W/ADHESIVE | "A" REF. | "B" BUNDLE DIA. RANGE |
|------------------------|-------------|--------------------------|
| KLB-350A-RT | 1.07 (27.2) | .30-.40 (7.6-10.1) |
| KLB-450A-RT | 1.23 (31.2) | .40-.50 (10.1-12.7) |
| KLB-750A-RT | 1.58 (40.1) | .70-.80 (17.8-20.3) |



TYPICAL RELEASE
TAB LOCATION

1/32 (0.8) THICK,
DOUBLE SIDED
ADHESIVE TAPE

NOTES:

- MATERIAL: NYLON 6/6 (RMS-01).
FLAME RETARDANT, NYLON (RMS-19),
AVAILABLE BY SPECIAL ORDER ONLY.
- COLOR: NATURAL.
- ACRYLIC ADHESIVE TAPE (RMS-15), WHITE LINER.
RUBBER ADHESIVE TAPE (RMS-102), BLUE LINER,
AVAILABLE BY SPECIAL ORDER ONLY.
TO ORDER USE KLB-XXXXA1-RT.

| | | | | | | | | |
|--------------------------|----------------------------------------|----------------|-------------------------|-------------------------------|--------------|----------------|-----------|------------|
| TITLE: KURLY-LOK ON BASE | | DWG IN IN (MM) | | FINAL | | | | |
| E | SE CO 200118 FOR CHANGES | SK 01.30.08 | TOLERANCES UNLESS NOTED | FILE # KLB | DWN: J.B. | APP: | PART # | PRINT TYPE |
| D | SEE CO 200112 FOR CHANGES | SK 01.24.08 | .XX=±.010 | MAT'L: SEE NOTES | DT: 01-23-96 | DT: | | |
| C | ADDED RUBBER ADHESIVE BY SPECIAL ORDER | SM 05.17.02 | .XXX=±.005 | RE: RICHCO, INC. | RICHCO INC. | | SEE TABLE | CA |
| B | ADDED NOTE 3. | SJ 03.05.02 | FRAC=±1/64 | PO BOX 804238, CHICAGO, 60680 | | (773) 539-4060 | | |
| A | CHANGED FILE NUMBER | SM 05.31.01 | ANG=±1' | | | | | |
| REV | DESCRIPTION | ENGR DATE | | | | | | |