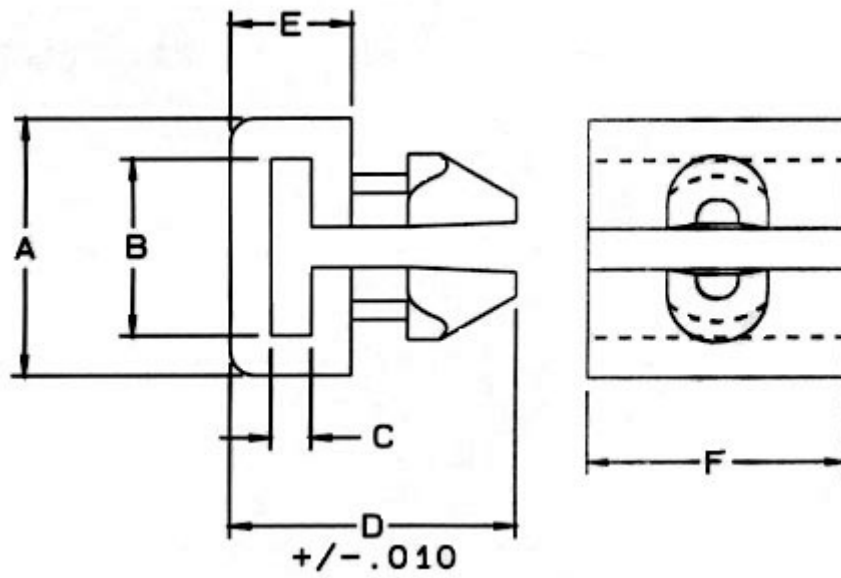


**Clip Mounts**

MENU



Clip Mounts are designed to securely connect a tie to a predrilled hole. Clip Mounts can be used in applications where the back of the panel is inaccessible.

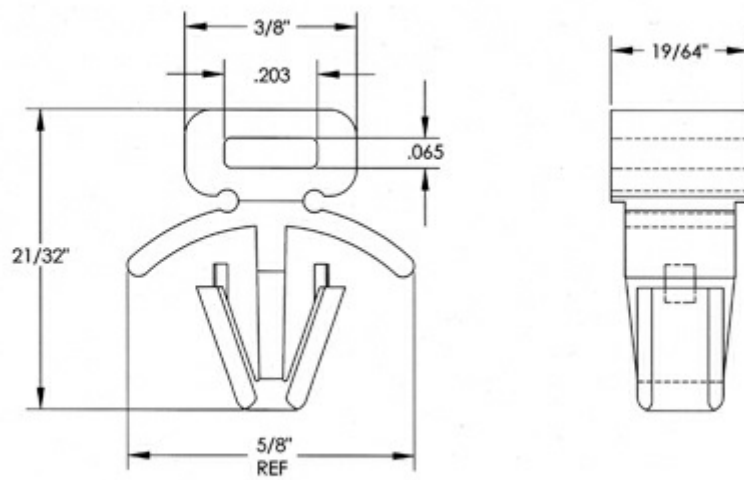


[Filter List](#) [Advanced Sort](#) [Display Options](#)

Item Number	Description	Package Qty	A	B	C	D	E	Hole Size	Panel Thk.	F
23TA00090	.187 CLIP MOUNT M01 Pre-Packaged @ 1,000pcs/S-bag	1000	0.320 (+/- 0.005)	0.220 (+/- 0.005)	0.050 (+/- 0.005)	0.350 (+/- 0.005)	0.150 (+/- 0.005)	0.187 (+/- 0.005)	0.062 (+/- 0.005)	0.320 (+/- 0.005)
23TA00100	CLIP MOUNT .187 HOLE M01 MT Pre-Packaged @ 1000pcs/S-bag	1000	0.380 (+/- 0.005)	0.220 (+/- 0.005)	0.065 (+/- 0.005)	0.400 (+/- 0.010)	0.190 (+/- 0.005)	0.187 (+/- 0.005)	0.062 (+/- 0.005)	0.320 (+/- 0.005)
23TA00110	.250 CLIP MOUNT M01 Pre-Packaged @ 1,000pcs/S-bag	1000	0.380 (+/- 0.005)	0.220 (+/- 0.005)	0.065 (+/- 0.005)	0.400 (+/- 0.010)	0.190 (+/- 0.005)	0.250 (+/- 0.005)	0.062 (+/- 0.005)	0.320 (+/- 0.005)

Show Dimension Tolerances

**Clip Mount**



Item Number	Description	Packaged Qty
23TA00120	250D X 047/109PT CLIP MOUNT M01 Pre-Packaged @ 1,000pcs/L-bag	1000