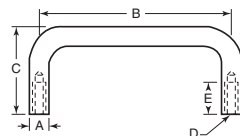


PULL HANDLES

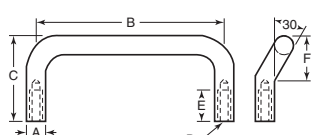


Aluminum, Brass or 303 Stainless Steel
Round Internal Threads
Inch



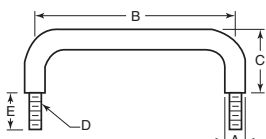
Item No.	A	B	C	Thread D	Min. E	Pack Qty.	Bulk Pack Qty.	Item No.	A	B	C	Thread D	Min. E	Pack Qty.	Bulk Pack Qty.	Item No.	A	B	C	Thread D	Min. E	Pack Qty.	Bulk Pack Qty.
Aluminum - Black Anodized								Aluminum - Black Anodized								303 Stainless Steel - Passivated, Dull Finish							
VPH-10	5/32	1	1	4-40	1/4	1	50	VPH-58	3/8	7	1 1/4	10-32	3/8	1	50	VPH-229	5/16	3	1 1/2	10-32	3/8	1	50
VPH-15	5/32	1 1/4	1	4-40	1/4	1	50	VPH-59	3/8	8	1 1/4	10-32	3/8	1	50	VPH-232	5/16	3 1/2	1 1/2	10-32	3/8	1	50
VPH-17	5/32	1 1/2	1	4-40	1/4	1	50	VPH-61	3/8	10	1 1/4	1/4-20	9/16	1	50	VPH-230	5/16	4	1 1/2	10-32	3/8	1	50
VPH-20	5/32	2	1	4-40	1/4	1	50	VPH-62	3/8	12	1 1/4	1/4-20	9/16	1	50	VPH-2465	5/16	4	3	10-32	3/8	1	50
VPH-22	5/32	2 1/2	1	4-40	1/4	1	50	VPH-63	1/2	3	1 1/8	10-32	3/8	1	50	VPH-237	5/16	4 1/2	1 1/2	10-32	3/8	1	50
VPH-25	5/32	3	1	4-40	1/4	1	50	VPH-2510	1/2	3	3	10-32	3/8	1	50	VPH-242	5/16	5	1 1/2	10-32	3/8	1	50
VPH-2315	1/4	2	1 1/2	8-32	5/16	1	50	VPH-60	1/2	4	1 1/8	10-32	3/8	1	50	VPH-2467	5/16	5	3	10-32	3/8	1	50
VPH-2320	1/4	2 1/2	1 1/2	8-32	5/16	1	50	VPH-2515	1/2	4	3	10-32	3/8	1	50	VPH-2460	5/16	5 1/2	1 1/2	10-32	3/8	1	50
VPH-2325	1/4	3	1 1/2	8-32	5/16	1	50	VPH-64	1/2	5	1 1/8	10-32	3/8	1	50	VPH-245	5/16	6	1 1/2	10-32	3/8	1	50
VPH-2330	1/4	3 1/2	1 1/2	8-32	5/16	1	50	VPH-2520	1/2	5	3	10-32	3/8	1	50	VPH-2469	5/16	6	3	10-32	3/8	1	50
VPH-2335	1/4	4	1 1/2	8-32	5/16	1	50	VPH-3090	1/2	5	4	10-32	3/8	1	50	VPH-2471	5/16	6 1/2	3	10-32	3/8	1	50
VPH-2340	1/4	4 1/2	1 1/2	8-32	5/16	1	50	VPH-65	1/2	6	1 1/8	1/4-20	9/16	1	50	VPH-246	5/16	7 1/2	1 1/2	10-32	3/8	1	50
VPH-2345	1/4	5	1 1/2	8-32	5/16	1	50	VPH-2540	1/2	6	3	1/4-20	9/16	1	50	VPH-247	5/16	8	1 1/2	10-32	3/8	1	50
VPH-2350	1/4	6	1 1/2	8-32	5/16	1	50	VPH-70	1/2	7	1 1/8	1/4-20	9/16	1	50	VPH-248	5/16	9	1 1/2	10-32	3/8	1	50
VPH-27	5/16	2	1 1/2	10-32	3/8	1	50	VPH-2545	1/2	7	3	1/4-20	9/16	1	50	VPH-250	3/8	3	1 1/4	10-32	3/8	1	50
VPH-28	5/16	2 1/2	1 1/2	10-32	3/8	1	50	VPH-75	1/2	8	1 1/8	1/4-20	9/16	1	50	VPH-255	3/8	4	1 1/4	10-32	3/8	1	50
VPH-30	5/16	3	1 1/2	10-32	3/8	1	50	VPH-2550	1/2	8	3	1/4-20	9/16	1	50	VPH-256	3/8	5	1 1/4	10-32	3/8	1	50
VPH-32	5/16	3 1/2	1 1/2	10-32	3/8	1	50	VPH-80	1/2	10	1 1/8	5/16-18	9/16	1	50	VPH-257	3/8	6	1 1/4	10-32	3/8	1	50
VPH-35	5/16	4	1 1/2	10-32	3/8	1	50	VPH-2570	1/2	10	3	5/16-18	9/16	1	50	VPH-258	3/8	7	1 1/4	10-32	3/8	1	50
VPH-2365	5/16	4	3	10-32	3/8	1	50	VPH-85	1/2	12	1 1/8	5/16-18	9/16	1	50	VPH-259	3/8	8	1 1/4	10-32	3/8	1	50
VPH-37	5/16	4 1/2	1 1/2	10-32	3/8	1	50	VPH-2575	1/2	12	3	5/16-18	9/16	1	50	VPH-262	3/8	12	1 1/4	1/4-20	9/16	1	50
VPH-40	5/16	4 1/2	1 1/2	10-32	3/8	1	50	303 Stainless Steel - Passivated, Dull Finish								VPH-260	1/2	4	1 1/2	10-32	3/8	1	50
VPH-42	5/16	5	1 1/2	10-32	3/8	1	50	VPH-210	5/32	1	1	4-40	1/4	1	50	VPH-2530	1/2	4	3	10-32	3/8	1	50
VPH-2367	5/16	5	3	10-32	3/8	1	50	VPH-217	5/32	1 1/2	1	4-40	1/4	1	50	VPH-264	1/2	5	1 1/2	10-32	3/8	1	50
VPH-2360	5/16	5 1/2	1 1/2	10-32	3/8	1	50	VPH-220	5/32	2	1	4-40	1/4	1	50	VPH-2535	1/2	5	3	10-32	3/8	1	50
VPH-45	5/16	6	1 1/2	10-32	3/8	1	50	VPH-222	5/32	2 1/2	1	4-40	1/4	1	50	VPH-265	1/2	6	1 1/8	1/4-20	9/16	1	50
VPH-2369	5/16	6	3	10-32	3/8	1	50	VPH-225	5/32	3	1	4-40	1/4	1	50	VPH-2555	1/2	6	3	1/4-20	9/16	1	50
VPH-43	5/16	6 1/2	1 1/2	10-32	3/8	1	50	VPH-2410	1/4	1 1/2	1 1/2	8-32	5/16	1	50	VPH-2560	1/2	7	3	1/4-20	9/16	1	50
VPH-44	5/16	7	1 1/2	10-32	3/8	1	50	VPH-2415	1/4	2	1 1/2	8-32	5/16	1	50	VPH-275	1/2	8	1 1/8	1/4-20	9/16	1	50
VPH-2373	5/16	7	3	10-32	3/8	1	50	VPH-2420	1/4	2 1/2	1 1/2	8-32	5/16	1	50	VPH-2565	1/2	8	3	1/4-20	9/16	1	50
VPH-2375	5/16	7 1/2	3	10-32	3/8	1	50	VPH-2425	1/4	3	1 1/2	8-32	5/16	1	50	VPH-280	1/2	10	1 1/8	5/16-18	9/16	1	50
VPH-47	5/16	8	1 1/2	10-32	3/8	1	50	VPH-2430	1/4	3 1/2	1 1/2	8-32	5/16	1	50	VPH-250	1/2	10	3	5/16-18	9/16	1	50
VPH-48	5/16	9	1 1/2	10-32	3/8	1	50	VPH-2435	1/4	4	1 1/2	8-32	5/16	1	50	VPH-285	1/2	12	1 1/8	5/16-18	9/16	1	50
VPH-49	5/16	10	1 1/2	10-32	3/8	1	50	VPH-2440	1/4	4 1/2	1 1/2	8-32	5/16	1	50	VPH-2585	1/2	12	3	5/16-18	9/16	1	50
VPH-50	3/8	3	1 1/4	10-32	3/8	1	50	VPH-2445	1/4	5	1 1/2	8-32	5/16	1	50	Brass - Zinc, Clear Chromate Plated Finish							
VPH-55	3/8	4	1 1/4	10-32	3/8	1	50	VPH-2450	1/4	6	1 1/2	8-32	5/16	1	50	VPH-410	5/16	4	1 1/2	10-32	3/8	1	50
VPH-56	3/8	5	1 1/4	10-32	3/8	1	50	VPH-227	5/16	2	1 1/2	10-32	3/8	1	50	VPH-415	5/16	4 1/2	1 1/2	10-32	3/8	1	50
VPH-57	3/8	6	1 1/4	10-32	3/8	1	50	VPH-228	5/16	2 1/2	1 1/2	10-32	3/8	1	50	VPH-425	3/8	4	1 1/8	10-32	3/8	1	50

Aluminum or Stainless Steel
Round Offset, Internal Threads
Inch



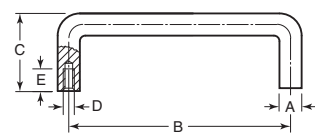
Item No.	A	B	C	Thread D	Min. E	F	Pack Qty.	Bulk Pack Qty.
Aluminum - Black Anodized Finish								
VPH-2610	5/16	3	1 1/2	10-32	3/8	7/8	1	50
VPH-2615	5/16	4	1 1/2	10-32	3/8	7/8	1	50
VPH-2620	5/16	4 1/2	1 1/2	10-32	3/8	7/8	1	50
VPH-2625	5/16	5	1 1/2	10-32	3/8	7/8	1	50
VPH-2635	5/16	6	1 1/2	10-32	3/8	7/8	1	50
VPH-2640	5/16	7	1 1/2	10-32	3/8	7/8	1	50
VPH-2645	5/16	8	1 1/2	10-32	3/8	7/8	1	50
VPH-2655	5/16	10	1 1/2	10-32	3/8	7/8	1	50
Stainless - Passivated, Dull Finish								
VPH-2660	5/16	3	1 1/2	10-32	3/8	7/8	1	50
VPH-2665	5/16	4	1 1/2	10-32	3/8	7/8	1	50
VPH-2670	5/16	4 1/2	1 1/2	10-32	3/8	7/8	1	50
VPH-2675	5/16	5	1 1/2	10-32	3/8	7/8	1	50
VPH-2685	5/16	6	1 1/2	10-32	3/8	7/8	1	50
VPH-2695	5/16	8	1 1/2	10-32	3/8	7/8	1	50
VPH-2705	5/16	10	1 1/2	10-32	3/8	7/8	1	50

Aluminum, Black Anodized or Dull Finish
Round with Shoulder, External Threads
Inch



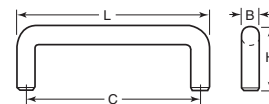
Item No.	A	B	C	Thread D	E	Pack Qty.	Bulk Pack Qty.
Aluminum - Black Anodized Finish							
VPH-1430	5/16	6	1 13/16	1/4-20	1/2	1	50
Aluminum - Passivated, Dull Finish							
VPH-1470	5/16	4	1 13/16	10-32	1/2	1	50
VPH-1480	5/16	6	1 13/16	1/4-20	1/2	1	50

Aluminum - Black or Clear Anodized
Round, Stirrup Shaped, Internal Threads
Metric



Item No.	A	B	C	Thread D	Min. E	Pack Qty.	Bulk Pack Qty.
Black Anodized							
KPB-1347	10	55	41	M5 x .80	10	1	100
KPB-1348	10	88	41	M5 x .80	10	1	100
KPB-1349	10	100	41	M5 x .80	10	1	100
KPB-1350	10	120	41	M5 x .80	10	1	100
KPB-1351	10	180	41	M5 x .80	10	1	100
Clear Anodized							
KPB-1355	10	55	41	M5 x .80	10	1	100
KPB-1356	10	88	41	M5 x .80	10	1	100
KPB-1357	10	100	41	M5 x .80	10	1	100
KPB-1358	10	120	41	M5 x .80	10	1	100
KPB-1359	10	180	41	M5 x .80	10	1	100

Stainless Steel - Type 316
Round
Inch



All handles are made from Type 316 stainless steel, with a satin finish. Supplied with stainless steel mounting screws.

Item No.	L	C	H	B	Thread	Pack Qty.	Bulk Pack Qty.
SUG-105	4.37	4	1.378	.394	8-32	1	100
SUG-106	5.374	5	1.378	.394	8-32	1	100
SUG-107	6.378	6	1.378	.394	8-32	1	100
SUG-108	9.37	9	1.378	.394	8-32	1	100
SUG-109	12.382	12	1.378	.394	8-32	1	100