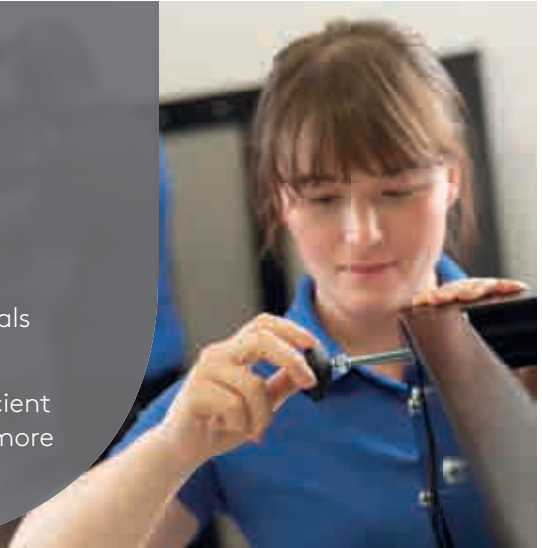


KEEP IT LEVEL

- Safeguard stability with levelling, anti-vibration and articulated feet to ensure operator safety and reduce downtime
- Protect surfaces and floors with a range of materials and finishes
- Alter height, improve clearance and maintain efficient positioning of machinery, cabinets, furniture and more



672



677



678



679



683



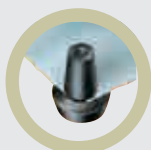
685



687



690



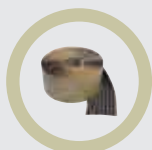
694



696



700



701



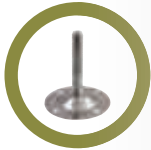
707



713

MORE THAN
1,100
FEET PRODUCTS
AVAILABLE

FEET



MACHINERY FEET

672



ADJUSTABLE FEET

681



FURNITURE FEET

687



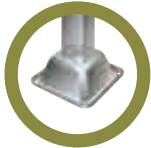
SELF-ADHESIVE,
SCREW-ON FEET & BUMPERS

690



TILTSERTS, BUFFERS & GLIDES

704



SADDLE & INSERT FEET

712

Premium Machinery Mounting Feet

SR 1569

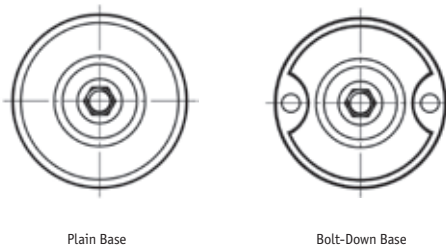
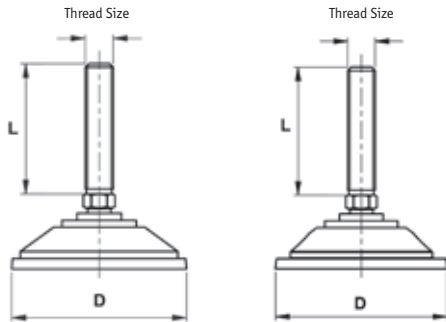
Polyamide or Stainless Base with Stainless Steel or ENP Mild Steel Stud



- Stud manufactured from solid hexagon bar by rolling process ensuring both accuracy and strength of thread
- Polyamide base offers high-load capacity, chemical resistance and stability during temperature change
- 10mm diameter mounting holes

Plain Black Polyamide Base

Part Number		Thread Size	Dimensions (mm)		Approximate Load Capacity (kg)	Standard Pack Quantity
Stainless Steel Stud	ENP Mild Steel Stud		D	L		
462402	-	M8	55	60	400	48
462403	-	M10	55	75	500	48
462404	462415	M12	55	75	600	24
462405	462416	M12	55	125	600	24
-	462417	M12	55	150	600	8
462406	462418	M12	70	75	1000	24
-	462419	M12	70	150	1000	8
462407	-	M12	70	125	1000	8
462408	462420	M16	70	75	1500	8
462409	462421	M16	70	150	1500	4
462410	-	M16	70	200	1500	4
462411	462422	M16	100	75	2000	4
-	462423	M16	100	100	2000	4
462412	462424	M16	100	150	2000	4
-	462425	M16	100	200	2000	4
462413	462426	M20	100	150	2000	4
462414	-	M24	100	200	2000	4



Bolt-Down Black Polyamide Base

Part Number		Thread Size	Dimensions (mm)		Approximate Load Capacity (kg)	Standard Pack Quantity
Stainless Steel Stud	ENP Mild Steel Stud		D	L		
462427	462433	M12	100	75	1000	8
462428	462434	M12	100	125	1000	8
-	462435	M12	100	150	1000	8
462429	462436	M16	100	75	2000	8
462430	462437	M16	100	150	2000	8
-	462438	M16	100	200	2000	8
462431	462439	M20	100	150	2000	4
462432	-	M20	100	200	2000	4
-	462440	M24	100	150	2000	4

Stainless Steel Base

Part Number		Thread Size	Dimensions (mm)		Approximate Load Capacity (kg)	Standard Pack Quantity
Stainless Steel Stud	ENP Mild Steel Stud		D	L		
462441	-	M8	38	60	450	24
462442	-	M10	38	75	600	24
462443	-	M12	55	75	1500	8
462444	-	M12	55	125	1500	8
462445	-	M12	55	160	1500	8
462446	-	M16	70	75	2000	4
462447	462451	M16	70	150	2000	4
462448	-	M16	70	200	2000	4
462449	462453	M20	100	150	2000	4

Standard Machine Feet

SR 1545

Polyamide Base with Zinc Plated Steel Bolt

- Ideal for mounting machinery or conveyors
- High load bearing capacity
- Maximum recommended load: 900Kg
- 20° articulation



Bolt Down Polyamide Base

Part Number	Thread Size	Dimensions (mm)		Standard Pack Quantity
		Foot Diameter	Stud Length	
1254547	M8	60	80	50
1254548	M10	60	70	50
1254549	M10	60	125	50
1254553	M12	80	100	50
1254550	M12	80	150	50
1254534	M16	80	100	50
1254535	M16	80	150	25
1254536	M12	100	125	25
1287122	M16	100	100	25
1287123	M16	100	200	25
1234172	M16	120	150	20
1287124	M16	120	200	20
1254537	M20	120	150	10
1254538	M24	120	200	10

Plain Polyamide Base

Part Number	Thread Size	Dimensions (mm)		Standard Pack Quantity
		Foot Diameter	Stud Length	
1254519	M8	40	25	250
1254520	M8	40	40	200
1254539	M8	40	80	100
1254521	M8	50	40	150
1254540	M8	50	60	150
1254541	M8	50	80	100
1254522	M10	50	45	150
1254542	M10	50	70	100
1254543	M10	50	90	100
1254523	M10	60	45	100
1254544	M10	60	70	100
1254545	M10	60	125	50
1254555	M12	60	66	24
1254551	M12	60	80	100
1254554	M12	60	100	24
1254524	M12	60	125	50
1287125	M12	60	150	24
1254552	M12	80	66	100
1254556	M12	80	100	50
1254525	M12	80	125	50
1254546	M12	80	150	50
1254526	M16	80	66	100
1254527	M16	80	100	50
1254528	M16	80	150	25
1287126	M16	100	66	40
1287127	M16	100	100	25
1287128	M16	100	125	25
1287129	M16	100	150	20
1287130	M16	100	200	20
1234171	M16	120	150	20
1287131	M16	120	200	20
1254529	M20	120	125	10
1254530	M20	120	150	10
1254531	M20	120	200	10
1254532	M24	120	200	10
1254533	M24	120	250	10

Non-Slip Pads

- Suitable for SR 1545 feet
- Provides extra friction to prevent slippage



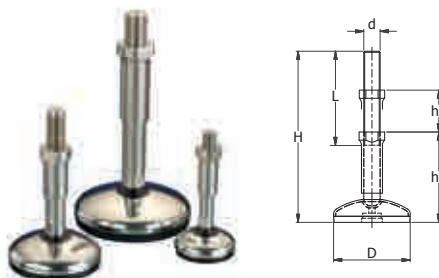
Part Number	Dimensions (mm)		Standard Pack Quantity
	Pad Diameter		
For Plain Base			
1254557	40		400
1254558	50		400
1254559	60		240
1254560	80		200
1254561	100		100
1254562	120		120
For Bolt-Down Base			
1254563	60		240
1254564	80		200
1254565	100		200
1254566	120		120

Hygienic Stainless Steel Machine Feet

SR 5699

303 Stainless Steel with inset Nitrile Rubber Base

- 7° articulation
- Suitable for clean environments – the covered thread prevents the accumulation of dirt



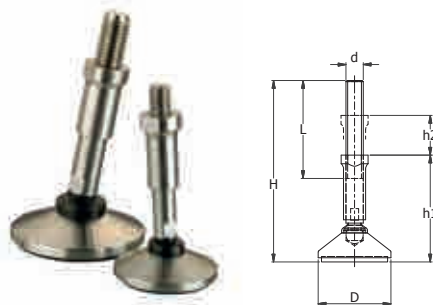
Part Number	Thread Size (d)	Dimensions (mm)						Max Load Capacity (kg)	Standard Pack Quantity
		Foot Diameter (D)	Stud Length	H	h1	h2	L		
550092	M12	50	92	170	95	50	92	350	4
550093	M16	75	92	180	100	50	92	750	4
550094	M20	100	92	194	110	50	92	1000	4

Low Profile Hygienic Stainless Steel Levelling Foot

SR 5667

303 Stainless Steel

- 20° articulation
- Suitable for clean environments – the covered thread prevents the accumulation of dirt
- Low profile base with high load capacity



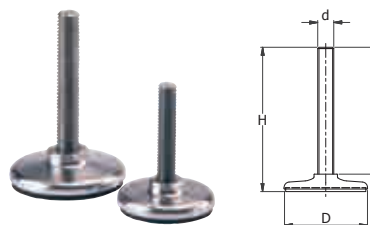
Part Number	Dimensions (mm)				Max Load Capacity (kg)	Standard Pack Quantity
	Thread Size (d)	Foot Diameter (D)	Stud Length (L)	Height (H)		
550089	M8	40	60	72	450	4
550090	M10	40	60	72	600	4
550091	M10	50	80	94	600	4

Fixed Stud Levelling Foot

SR 5701

303 Stainless Steel with inset Nitrile Rubber Base

- Fixed angle foot
- Low profile base



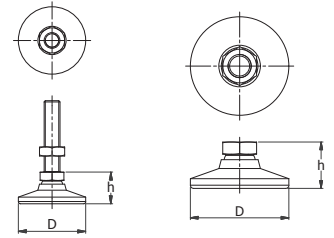
Part Number	Dimensions (mm)				Max Load Capacity (kg)	Standard Pack Quantity
	Thread Size (d)	Foot Diameter (D)	Stud Length (L)	Height (H)		
550107	M8	40	60	72	450	12
550108	M10	40	60	72	600	12
550109	M10	50	80	94	600	12
550110	M12	50	50	65	750	8
550111	M12	50	75	90	750	8
550112	M12	60	125	140	1250	4
550113	M16	80	150	171	2000	4
550114	M20	120	200	224	3000	4

Steel Levelling Feet

SR 5788

Steel with Various Finishes

- 15° swivel to adjust to uneven surfaces
- Hardened ball (except in stainless) forms its own seat and resists galling
- Large diameter pad for solid support



Gold Chromate

Part Number		Type	Thread Size	Dimensions (mm)		Approximate Load Capacity (kg)	Standard Pack Quantity
Standard	Rubber Pad Version			Foot Diameter (D)	Base Height (h)		
HVTM-5	HVTME-5	Stud	M6 x 25.4mm	19.1	13.5	310	4
HVTM-10	HVTME-10	Stud	M8 x 31.8mm	25.4	17.8	490	4
HVTM-15	HVTME-15	Stud	M10 x 51mm	32	22	1700	4
HVTM-20	HVTME-20	Stud	M12 x 51mm	48	29	2260	4
HVTM-25	HVTME-25	Stud	M16 x 51mm	64	32	2720	4
HVTM-30	HVTME-30	Stud	M20 x 51mm	76	38	3260	4
HVTM-35	HVTME-35	Stud	M24 x 108mm	102	48	9970	1
HVLM-5	HVLM-5	Socket	M6	19.1	13.5	310	4
HVLM-10	HVLM-10	Socket	M8	25.4	17.8	490	4
HVLM-15	HVLM-15	Socket	M10	32	22	1700	4
HVLM-20	HVLM-20	Socket	M12	48	29	2260	4
HVLM-25	HVLM-25	Socket	M16	64	32	2720	4
HVLM-30	HVLM-30	Socket	M20	76	38	3260	4
HVLM-35	HVLM-35	Socket	M24	102	48	9970	4



Nickel Plated

Part Number		Type	Thread Size	Dimensions (mm)		Approximate Load Capacity (kg)	Standard Pack Quantity
Standard	Rubber Pad Version			Foot Diameter (D)	Base Height (h)		
HVTM-5N	HVTME-5N	Stud	M6 x 25.4mm	19.1	13.5	310	4
HVTM-10N	HVTME-10N	Stud	M8 x 31.8mm	25.4	17.8	490	4
HVTM-15N	HVTME-15N	Stud	M10 x 51mm	32	22	1700	4
HVTM-20N	HVTME-20N	Stud	M12 x 51mm	48	29	2260	4
HVTM-25N	HVTME-25N	Stud	M16 x 51mm	64	32	2720	4
HVTM-30N	HVTME-30N	Stud	M20 x 51mm	76	38	3260	4
HVTM-35N	HVTME-35N	Stud	M24 x 108mm	102	48	9970	1
HVLM-5N	HVLM-5N	Socket	M6	19.1	13.5	310	4
HVLM-10N	HVLM-10N	Socket	M8	25.4	17.8	490	4
HVLM-15N	HVLM-15N	Socket	M10	32	22	1700	4
HVLM-20N	HVLM-20N	Socket	M12	48	29	2260	4
HVLM-25N	HVLM-25N	Socket	M16	64	32	2720	4
HVLM-30N	HVLM-30N	Socket	M20	76	38	3260	4
HVLM-35N	HVLM-35N	Socket	M24	102	48	9970	4



Stainless Steel

Part Number		Type	Thread Size	Dimensions (mm)		Approximate Load Capacity (kg)	Standard Pack Quantity
Standard	Rubber Pad Version			Foot Diameter (D)	Base Height (h)		
HVTM-5SS	HVTME-5SS	Stud	M6 x 25.4mm	19.1	13.5	310	4
HVTM-10SS	HVTME-10SS	Stud	M8 x 31.8mm	25.4	17.8	490	4
HVTM-15SS	HVTME-15SS	Stud	M10 x 51mm	32	22	1700	4
HVTM-20SS	HVTME-20SS	Stud	M12 x 51mm	48	29	2260	4
HVTM-25SS	HVTME-25SS	Stud	M16 x 51mm	64	32	2720	4
HVTM-30SS	HVTME-30SS	Stud	M20 x 51mm	76	38	3260	4
HVTM-35SS	HVTME-35SS	Stud	M24 x 108mm	102	48	9970	4
HVLM-5SS	HVLM-5SS	Socket	M6	19.1	13.5	310	4
HVLM-10SS	HVLM-10SS	Socket	M8	25.4	17.8	490	4
HVLM-15SS	HVLM-15SS	Socket	M10	32	22	1700	4
HVLM-20SS	HVLM-20SS	Socket	M12	48	29	2260	4
HVLM-25SS	HVLM-25SS	Socket	M16	64	32	2720	4
HVLM-30SS	HVLM-30SS	Socket	M20	76	38	3260	4
HVLM-35SS	HVLM-35SS	Socket	M24	102	48	9970	4



Pressed Steel Bolt Down Feet

SR 5440

Galvanised Steel, Shore A 80 Nitrile Rubber

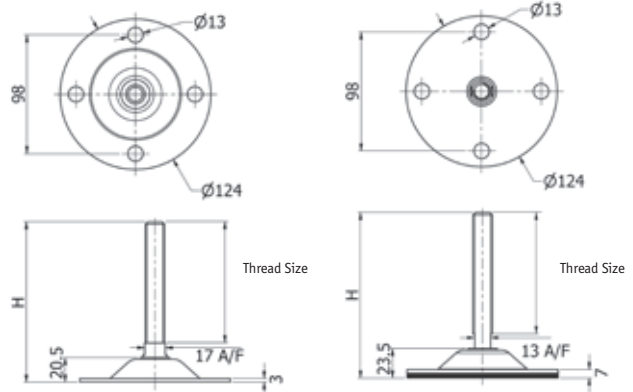
- High load capacity
- 8° articulation
- 4 x 12.5mm fixing holes
- With or without rubber pad for base
- Ideal for conveyors and machines



Standard



Rubber Pad Version



Part Number		Thread Size	Dimensions (mm)		Standard Pack Quantity
Standard	Rubber Pad Version		H	Maximum Static Load N	
493684	493685	M16 x 100	134	20000	2
493686	493687	M16 x 150	184	20000	2
493688	493689	M20 x 100	134	20000	2
493690	493691	M20 x 150	184	20000	2

Pressed Stainless Steel Bolt Down Feet

SR 5441

304 Stainless Steel, Shore A 80 Nitrile Rubber

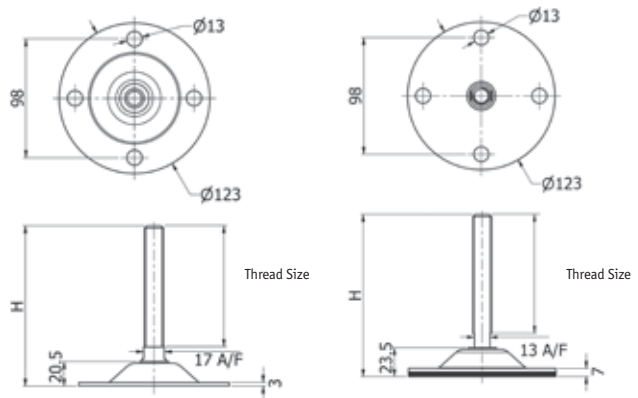
- High load capacity
- 8° articulation
- 4 x 12.5mm fixing holes
- With or without rubber pad for base
- Ideal for conveyors and machines



Standard



Rubber Pad Version



Part Number		Thread Size	Dimensions (mm)		Standard Pack Quantity
Standard	Rubber Pad Version		H	Maximum Static Load N	
493692	493693	M16 x 100	134	20000	2
493694	493695	M16 x 150	184	20000	2
493696	493697	M20 x 100	134	20000	2
493698	493699	M20 x 150	184	20000	2

Pressed Steel Bolt Down Duck Feet

SR 5789

Galvanised Steel

- High load capacity – suitable for machinery and conveyors
- Asymmetrical foot design reduces interference with walls or walkways
- Bolt holes for secure attachment to ground anchors

Part Number	Thread Size	Dimensions (mm)					Approximate Load Capacity (kg)	Standard Pack Quantity
		L	W	C	S	H		
1220400	M16	112	80	50	150	189.5	2000	2
1220401	M16	112	80	50	200	239.5	2000	2
1220402	M20	112	80	50	150	190.5	2000	2
1220403	M20	112	80	50	200	240.5	2000	2
1220404	M16	151	110	70	150	191	2500	2
1220405	M16	151	110	70	200	241	2500	2
1220406	M20	151	110	70	150	192	2500	2
1220407	M20	151	110	70	200	242	2500	2
1220408	M24	151	110	70	150	193	3000	2
1220409	M24	151	110	70	200	243	3000	2

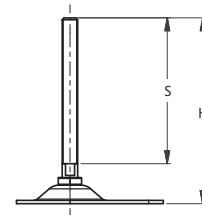
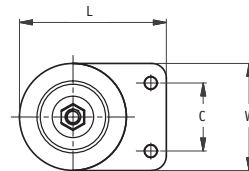


Pressed Stainless Steel Bolt Down Duck Feet

SR 5790

304 Stainless Steel

- High load capacity – suitable for machinery and conveyors
- Asymmetrical foot design reduces interference with walls or walkways
- Bolt holes for secure attachment to ground anchors
- Suitable for wet and corrosive environments



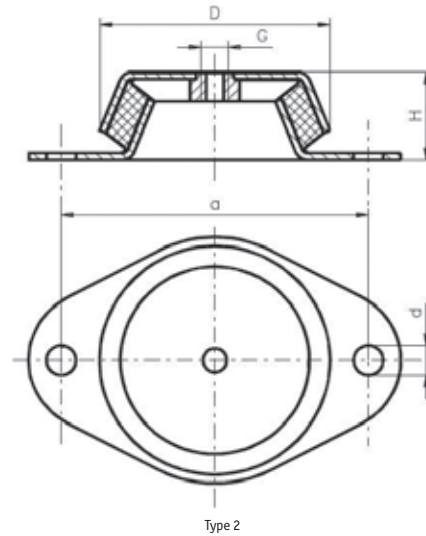
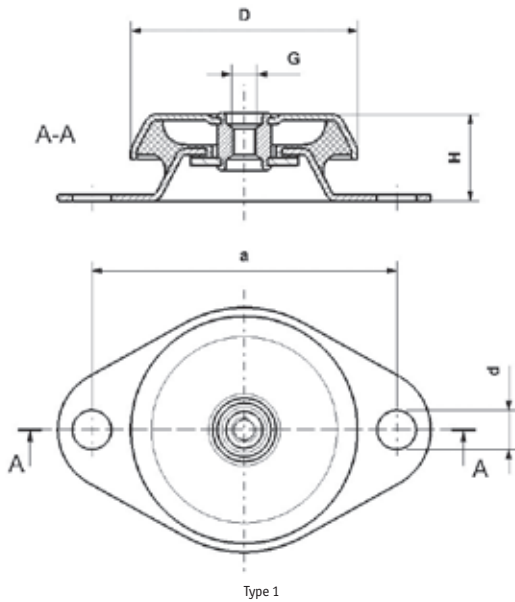
Part Number	Thread Size	Dimensions (mm)					Approximate Load Capacity (kg)	Standard Pack Quantity
		L	W	C	S	H		
1220410	M16	112	80	50	150	189.5	2000	2
1220411	M16	112	80	50	200	239.5	2000	2
1220412	M20	112	80	50	150	190.5	2000	2
1220413	M20	112	80	50	200	240.5	2000	2
1220414	M16	151	110	70	150	191	2500	2
1220415	M16	151	110	70	200	241	2500	2
1220416	M20	151	110	70	150	192	2500	2
1220417	M20	151	110	70	200	242	2500	2
1220418	M24	151	110	70	150	193	3000	2
1220419	M24	151	110	70	200	243	3000	2

Anti-Vibration Machine Mounts

SR P-0038

Galvanised Steel ST37 casing with natural rubber moulding

- Shore Rubber hardness 60
- Break safe options available
- Contact customer services for non standard rubber hardness or for a greater selection of thread sizes for the products shown



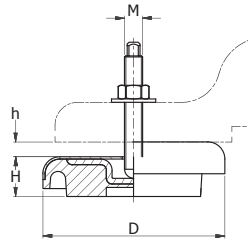
Part Number	Type	Thread Size	Dimensions (mm)				Standard Pack Quantity
			D	H	a	d	
1460873	1	M8	48	23	68	6.2	4
1460874	2	M8	48	23	68	6.2	4
1460875	1	M10	62	30	85	8.2	4
1460876	2	M10	62	30	85	8.2	4
1460877	1	M12	92	45	110	10.2	4
1460878	2	M12	92	45	110	10.2	4
1460879	1	M12	101	38	175	14	4
1460880	2	M12	101	38	175	14	4
1460881	1	M12	106	38	140	12.4	4
1460882	2	M12	106	38	140	12.4	4
1460883	1	M16	160	60	200	16.2	4
1460884	2	M16	160	60	200	16.2	4

Anti-Vibration Machine Mounts

SR 5711

Cast Iron Base Plate with Nitrile Rubber Moulding

- The foot holds in place as the thread is tightened
- The unique design enables height adjustment whilst maintaining a totally sealed vibration absorbing base
- Estimated dynamic load capacity varies depending on application – contact Customer Services for more details
- Shore rubber hardness 80
- All bolts are fine pitch



Part Number	Dimensions (mm)				Static Load per mount (kg)	Standard Pack Quantity
	Bolt (M)	Foot Diameter (D)	Foot Height (H)	Adjust Height (h)		
550115*	M10x80	80	25	8	170	4
550116	M12x100	120	32	12	1200	1
550117	M16x120	160	35	12	3500	1

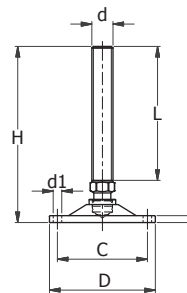
*Rubber Shore Hardness 60

Low-Profile Bolt Down Levelling Feet

SR 5700

Stainless Steel 303 or Mild Steel

- Load capacities ranging from 300kg-3750kg
- 20° articulation
- Bolt down hole for secure fixing



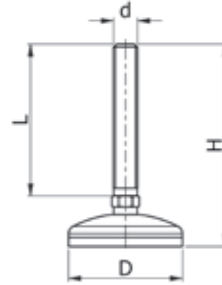
Part Number		Dimensions (mm)							Max Load Capacity (kg)	Standard Pack Quantity
Stainless Steel	Mild Steel	Thread Size (d)	Thread Length (L)	Foot Diameter (D)	Bolt Down Centre (C)	Height (H)	Flange Thickness (t)	Hole Diameter (d1)		
550095	550101	M8	60	50	40	82	4	5.5	300	12
550096	550102	M10	75	50	40	97	4	5.5	500	12
550097	550103	M12	150	60	50	175	5	5.5	1250	8
550098	550104	M16	150	80	68	181	6	6.5	1750	4
550099	550105	M20	150	100	82	189	6.5	9	2500	4
550100	550106	M24	200	120	100	256	7.5	11	3750	4

Vibration Dampening Machine Feet

SR 5442

303 Stainless Steel

- 7° articulation
- Designed to absorb vibration
- High adhesion to floor



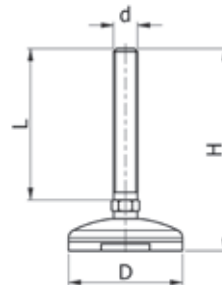
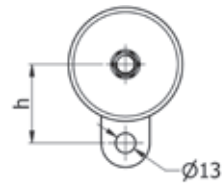
Part Number	Dimensions (mm)				Max Loading (kg)	Standard Pack Quantity
	d	L	D	H		
493705	M10	50	50	75	350	4
493706	M10	100	50	125	350	4
493707	M12	100	50	125	350	4
493708	M12	150	50	175	350	4
493709	M16	100	50	128	350	4
493710	M16	100	75	133	750	4
493711	M16	150	75	183	750	4
493712	M16	100	100	138	1000	4
493713	M20	150	100	191	1000	4
493714	M24	150	100	193	1000	4

Vibration Dampening Machine Feet – Bolt Down

SR 5443

303 Stainless Steel Base and Stud with Nitrile Rubber Core

- 7° articulation
- Bolt down
- Designed to absorb vibration
- High adhesion to floor



Part Number	Dimensions (mm)						Max Loading (kg)	Standard Pack Quantity
	d	L	H	D	h			
493715	M16	150	183	75	52	750	4	
493716	M20	150	183	75	52	750	4	
493717	M16	150	188	100	67	1000	4	
493718	M20	150	191	100	67	1000	4	
493719	M24	150	193	100	67	1000	4	

Industrial Articulated Stainless Steel Feet

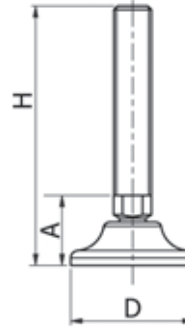
SR 5439

Black Polyamide Base, 304 Stainless Steel Thread

- 30° articulation
- Ideal for catering and food machinery



Part Number	Thread Size	Dimensions (mm)			Maximum Static Load (kg)	Standard Pack Quantity
		D	A	H		
493670	M8 x 50	40	27	77	10000	24
493671	M8 x 75	40	27	102	10000	24
493672	M10 x 75	40	27	102	10000	24
493673	M12 x 75	40	27	102	10000	24
493674	M10 x 100	40	27	127	10000	24
493675	M12 x 100	40	27	127	10000	24
493676	M10 x 75	65	33	108	11000	8
493677	M12 x 75	65	33	108	11000	8
493678	M10 x 100	65	33	133	11000	8
493679	M12 x 100	65	33	133	11000	8
493680	M16 x 100	65	37	137	15000	8
493681	M20 x 100	65	37	137	15000	8
493682	M16 x 150	65	37	187	15000	8
493683	M20 x 150	65	37	187	15000	8



Non-Articulating Adjustable Feet

SR 1572

Black Polypropylene

- Use alone or with threaded inserts



Insert in image not included.

Part Number			Dimensions (mm)		Standard Pack Quantity		
M8	M10	M12	Foot Dia.	Stud Length	M8	M10	M12
497505	-	-	25	15	750	-	-
497509	-	-	25	25	500	-	-
465523	-	-	30	50	400	-	-
497506	-	-	34	38	500	-	-
465527	-	-	38	20	375	-	-
497507	-	-	38	25	500	-	-
497508	-	-	38	38	500	-	-
-	466586	-	38	40	-	250	-
465528	466587	-	38	50	250	225	-
462315	465524	-	38	60	500	200	-
-	465525	-	38	70	-	175	-
465526	465530	-	38	100	150	125	-
-	466588	-	48	30	-	200	-
460810	466591	-	48	40	400	350	-
-	466592	-	48	50	-	150	-
-	465531	-	48	60	-	150	-
-	465532	-	48	70	-	125	-
-	465533	-	48	100	-	100	-
-	465534	-	48	120	-	150	-
-	465520	465521	58	50	-	125	200

Articulating Adjustable Feet

SR 1572

Black Polypropylene

- Allow adjustment under load with base remaining stationary



Part Number			Dimensions (mm)		Standard Pack Quantity		
M8	M10	M12	Foot Dia.	Stud Length	M8	M10	M12
465500	465499	-	30	30	450	225	-
-	465501	-	30	40	-	250	-
-	465502	-	30	50	-	225	-
-	466590	-	30	70	-	175	-
465503	-	-	30	80	250	-	-
465506	465504	465505	38	30	350	225	150
465511	466589	-	38	40	325	250	-
-	465507	-	38	50	-	225	-
-	-	466594	38	60	-	-	150
-	-	465509	38	70	-	-	100
465512	465508	-	38	80	225	150	-
-	-	465510	38	90	-	-	100
-	465516	-	48	30	-	200	-
465514	465484	-	48	40	400	250	-
465519	465517	-	48	50	200	150	-
-	465515	-	48	100	-	100	-
-	-	465522	58	100	-	-	75

ADJUSTABLE FEET

Standard Non-Articulating Adjustable Feet

SR 1572

Polypropylene

- Outer-Hex Slotted Head for adjustment
- Pozi socket in base for rapid assembly
- Grey feet are RAL 7042



25mm Diameter Foot

Part Number				Thread Length (mm)	Standard Pack Quantity	
M6		M8			M6	M8
Black	Grey	Black	Grey			
466121	551695	-	-	20	500	-
-	-	466122	551669	25	-	500
-	-	466123	551692	40	-	350
-	-	466124	-	55	-	250
-	-	466125	-	70	-	200
-	-	466126	-	100	-	150

30mm Diameter Foot

Part Number				Thread Length (mm)	Standard Pack Quantity	
M8		M10			M8	M10
Black	Grey	Black	Grey			
466127	551681	466132	551689	25	400	300
466128	551699	466133	551676	40	300	200
466129	-	466134	551702	55	200	100
466130	-	466135	551688	70	150	100
466131	-	466136	-	100	100	50

38mm Diameter Foot

Part Number						Thread Length (mm)	Standard Pack Quantity		
M8		M10		M12			M8	M10	M12
Black	Grey	Black	Grey	Black	Grey				
466137	-	466142	-	466147	-	25	400	300	200
466138	551670	466143	551674	466148	-	40	300	200	150
466139	-	466144	551680	466149	-	55	200	100	150
466140	551672	466145	551671	466150	-	70	150	100	100
466141	-	466146	-	466151	-	100	100	50	50

48mm Diameter Foot

Part Number						Thread Length (mm)	Standard Pack Quantity		
M8		M10		M12			M8	M10	M12
Black	Grey	Black	Grey	Black	Grey				
466152	-	466157	551704	466162	-	25	200	200	150
466153	-	466158	551698	466163	-	40	200	150	100
466154	-	466159	551703	466164	551668	55	150	100	100
466155	-	466160	-	466165	551697	70	150	100	50
466156	-	466161	-	466166	-	100	100	50	50

Standard Articulating Adjustable Feet

SR 1572

Polypropylene

- Allow adjustment under load with base remaining stationary
- Outer-Hex Slotted Head for adjustment
- Pozi socket in base for rapid assembly
- Grey feet are RAL 7042



25mm Diameter Foot

Part Number				Thread Length (mm)	Standard Pack Quantity	
M6		M8			M6	M8
Black	Grey	Black	Grey			
466212	-	-	-	20	500	-
-	-	466167	551675	25	-	500
-	-	466168	551691	40	-	350
-	-	466169	551705	55	-	250
-	-	466170	551694	70	-	200
-	-	466171	-	100	-	150

30mm Diameter Foot

Part Number				Thread Length (mm)	Standard Pack Quantity	
M8		M10			M8	M10
Black	Grey	Black	Grey			
466172	-	466177	551686	25	400	300
466173	551682	466178	551706	40	300	200
466174	-	466179	551677	55	200	100
466175	-	466180	551673	70	150	50
466176	-	466181	551707	100	100	100

38mm Diameter Foot

Part Number						Thread Length (mm)	Standard Pack Quantity		
M8		M10		M12			M8	M10	M12
Black	Grey	Black	Grey	Black	Grey				
466182	551696	466187	551683	466192	-	25	400	300	200
466183	551685	466188	551679	466193	-	40	300	200	150
466184	-	466189	551678	466194	-	55	200	100	150
466185	-	466190	551687	466195	-	70	150	100	100
466186	-	466191	551701	466196	-	100	100	50	50

48mm Diameter Foot

Part Number						Thread Length (mm)	Standard Pack Quantity		
M8		M10		M12			M8	M10	M12
Black	Grey	Black	Grey	Black	Grey				
466197	-	466202	-	466207	-	25	200	150	100
466198	-	466203	551700	466208	-	40	150	100	100
466199	-	466204	551693	466209	-	55	150	100	100
466200	-	466205	551690	466210	-	70	100	100	50
466201	-	466206	-	466211	551684	100	100	100	50

Adjustable Tilt Glides

SR 1575

Black Polypropylene

- Bright zinc-plated steel tilt ball and stud
- Ideal for angled applications
- Can be adjusted for use on uneven floor surfaces
- Ideal for use with SR1570 and SR1571 threaded inserts



Part Number	Thread Size	Dimensions (mm)		Standard Pack Quantity
		Foot Diameter	Stud Length	
462183	M6	25.0	25.0	750
462184	M6	32.5	25.0	500
110728	M8	25.0	12.0	100
110732	M8	25.0	25.0	100
110729	M8	32.0	12.0	100
110733	M8	32.0	25.0	100
110730	M8	38.0	12.0	100
110734	M8	38.0	25.0	100
110731	M8	47.5	12.0	100
110735	M8	47.5	25.0	100
110736	M10	25.0	15.0	100
110740	M10	25.0	38.0	100
110744	M10	25.0	50.0	100
110737	M10	32.0	15.0	100
110741	M10	32.0	38.0	100
110745	M10	32.0	50.0	100
110738	M10	38.0	15.0	100
110742	M10	38.0	38.0	100
110746	M10	38.0	50.0	100
110739	M10	47.5	15.0	100
110743	M10	47.5	38.0	100
110747	M10	47.5	50.0	100

Low-Profile Adjustable Feet

SR 1572

Black Polyamide or Polyethylene

- Zinc-plated steel stud
- Ideal for uneven surfaces



Part Number	Thread Size	Dimensions (mm)		Standard Pack Quantity
		Foot Diameter	Stud Length	
498651*	M6	20	20	1000
498652*	M6	20	25	1000
498653*	M6	20	50	1000
498655*	M6	25	25	1000
498654*	M8	20	16	1000
465329†	M8	25	25	500
498656*	M8	25	37	500
498657*	M8	32	20	600
601835*	M8	32	50	250
465330†	M8	35	25	250
465331†	M10	25	35	500
498658*	M10	32	25	500
465328†	M10	35	35	250
499810*	M10	44	20	250

*Polyethylene †Polyamide

ADJUSTABLE FEET

All-metal Height Adjusters

SR 1564

BZP Steel

- Articulating stud



Part Number	Thread Size	Dimensions (mm)		Standard Pack Quantity
		Foot Diameter	Stud Length	
463786	M10	46	40	200
463787	M10	46	60	175

Chrome-Capped Adjustable Feet

SR 1574

Black Polyethylene



- Attractive chrome metal cover shell
- Non-tilt design provides extra stability
- Ideal for uneven surfaces
- Protect floor surface from abrasion

Part Number	Thread Size	Dimensions (mm)		Standard Pack Quantity
		Foot Diameter	Stud Length	
465347	M6	20	10	1500
465346	M8	25	20	375
465352	M8	30	20	250
465355	M8	35	20	250
465356	M8	40	25	250
465345	M10	25	20	250
465350	M10	30	20	250
465358*	M10	40	40	250
465354*	M10	40	60	200
465359**	M10	40	25	250

*Small degree of tilt – loose swivelling adjustable nut (17mm a/f).

**Fixed hexagonal adjustable nut (10mm a/f).

Smooth-Based Adjustable Glides

SR 1578

Black Polyethylene

- Smooth chrome-coloured steel base offers excellent sliding movement
- Zinc-plated steel stud
- Ideal for use on carpeted floors



Part Number	Thread Size	Dimensions (mm)		Standard Pack Quantity
		Foot Diameter	Stud Length	
465353	M8	30	25	500
465351	M8	40	25	250
465349	M10	30	25	250
465357	M10	40	25	250

Chrome-Capped Low Profile Adjustable Feet

SR 1574

Natural Polyamide



- Attractive chrome metal cover shell
- Bright zinc-plated steel stud
- Ideal for uneven surfaces

Part Number	Thread Size	Dimensions (mm)		Standard Pack Quantity
		Foot Diameter	Stud Length	
RWA25M0820	M8	25	20	500
RWA35M0820	M8	35	20	250
RWA45M0820	M8	45	20	250
RWB50M0820*	M8	50	20	250
RWA45M1045	M10	45	45	250

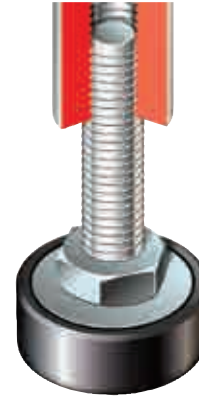
*Style variation, cap covers entire base.

Heavy-Duty Adjusters

SR 1568

Black Polyamide

- Integral hexagonal nut allows adjustment under load
- Screwdriver slot in base enables fast assembly with power tools
- Bases of 47.5mm and 37.5mm diameter (flat pattern only) have three moulded screw holes for fixing



Part Number	Thread Size	Dimensions (mm)		Standard Pack Quantity
		Foot Diameter	Stud Length	
RD25M1035F	M10	25.0	35.0	250
RD25M1045F	M10	25.0	45.0	250
RD25M1070F	M10	25.0	70.0	250
RD375M1035F	M10	37.5	35.0	250
RD375M1045F	M10	37.5	45.0	250
RD475M1045F	M10	47.5	45.0	175
RD475M1045C*	M10	47.5	45.0	175
RD475M1070F	M10	47.5	70.0	125
RD25M1245F	M12	25.0	45.0	125
RD475M1245F	M12	47.5	45.0	200

*Conical-shaped base.

Polyamide and Stainless Steel Allen Key Feet

SR 5791

Polyamide Base with 304 Stainless Steel Stud

- Allen key socket for easy adjustment from above
- Optional NBR rubber pad - Shore A 70 hardness
- Ideal to add height adjustment and levelling capability to desks and other furniture
- High static load capacity



Part Number		Thread Size	Dimensions (mm)					Approximate Load Capacity (kg)	Standard Pack Quantity
Standard	Rubber Pad Version		Base Diameter	Stud Length	Base Depth	Overall Height	Allen Key Size		
1220957	1220965	M8	40	25	16	44	4	500	50
1220958	1220966	M8	40	50	16	69	4	500	50
1220959	1220967	M10	40	25	16	44	5	500	50
1220960	1220968	M10	40	50	16	69	5	500	50
1220961	1220969	M8	50	25	20	48	4	600	50
1220962	1220970	M8	50	50	20	73	4	600	50
1220963	1220971	M10	50	25	20	48	5	600	50
1220964	1220972	M10	50	50	20	73	5	600	50

Polyamide and Steel Allen Key Feet

Polyamide Base with Zinc Plated Steel Stud

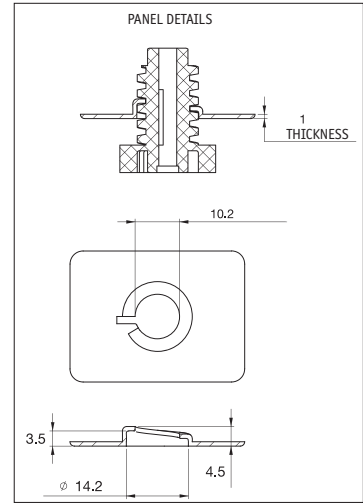
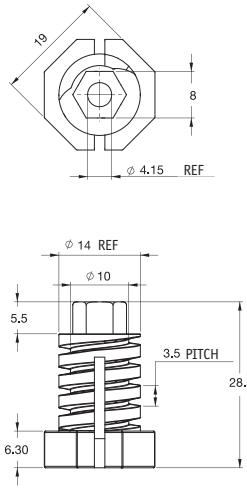
Part Number		Thread Size	Dimensions (mm)					Approximate Load Capacity (kg)	Standard Pack Quantity
Standard	Rubber Pad Version		Base Diameter	Stud Length	Base Depth	Overall Height	Allen Key Size		
1220383	1220391	M8	40	25	16	44	4	500	50
1220384	1220392	M8	40	50	16	69	4	500	50
1220385	1220393	M10	40	25	16	44	5	500	50
1220386	1220394	M10	40	50	16	69	5	500	50
1220387	1220395	M8	50	25	20	48	4	600	50
1220388	1220396	M8	50	50	20	73	4	600	50
1220389	1220397	M10	50	25	20	48	5	600	50
1220390	1220398	M10	50	50	20	73	5	600	50

ADJUSTABLE FEET

Levelling Foot

SR 5792

33% Glass Filled PA 6/6, UL94 HB, -30 to 140°C



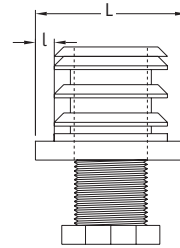
Part Number LF-1	Standard Pack Quantity 250
---------------------	-------------------------------

One-Piece Adjustable Feet

SR 1573

Black Polyamide

- Rugged, durable and heavy duty
- Resists lateral stress
- One-piece threaded insert and height adjuster



Square

Part Number	Dimensions (mm)			Axial Load kg (approx.)	Standard Pack Quantity
	L	l (gauge)	Thread		
465494	20 x 20	1.5-2.0	M10 x 25	100	100
060222269901	22 x 22	1.5-2.0	M10 x 25	100	50
465495	25 x 25	1.5-2.0	M16 x 25	150	100
465496	30 x 30	1.5-2.0	M22 x 25	300	100
465489	35 x 35	1.5-2.0	M22 x 25	300	100
465490	40 x 40	1.5-2.1	M22 x 25	300	100
465491	45 x 45	1.5-2.2	M30 x 30	300	100
465492	50 x 50	1.5-2.3	M30 x 30	300	100

Round

Part Number	Dimensions (mm)			Axial load kg. (approx.)	Standard Pack Quantity
	L	l (gauge)	Thread		
465486	32	1.5-2.0	M22 x 25	300	100
465487	35	1.5-2.0	M22 x 25	300	100
060004069901	38	1.5-2.0	M22 x 25	200	25
465488	40	1.5-2.0	M22 x 25	300	100
465493	45	1.5-2.0	M30 x 30	300	100
460830	50	1.5-2.0	M30 x 30	300	300
463563	60	1.5-2.0	M30 x 30	300	100

Hexagonal Feet

SR 5727

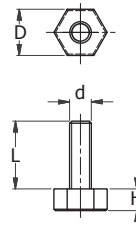
Polyamide or LDPE Base with Steel Thread

- Durable adjustable foot for appliances and furniture

Polyamide Base

Part Number	Thread Size	Dimensions (mm)			Standard Pack Quantity
		Stud Length	D	H	
499324	M8	15.0	17.0	8.0	1000
499325	M8	25.0	17.0	8.0	1000
499326	M8	35.0	17.0	8.0	800
499327	M10	25.0	17.0	8.0	700
499328	M10	35.0	17.0	8.0	500
499329	M10	45.0	17.0	8.0	400
499330	M10	55.0	17.0	8.0	350
499331	M10	65.0	17.0	8.0	300
499332	M10	75.0	17.0	8.0	250
499333	M10	105.0	17.0	8.0	200
499334	M10	145.0	17.0	8.0	100
499336	M6	25.0	20.0	8.0	1000
499337	M6	35.0	20.0	8.0	1000
499338	M6	55.0	20.0	8.0	800
499351	M10	20.0	27.0	5.0	750
499352	M10	25.0	27.0	5.0	600
499353	M10	35.0	27.0	5.0	500
499354	M10	45.0	27.0	5.0	400
499355	M10	55.0	27.0	5.0	300
499356	M10	65.0	27.0	5.0	300
499357	M10	75.0	27.0	5.0	250
499358	M10	105.0	27.0	5.0	200
499359	M10	145.0	27.0	5.0	150
499360*	M12	17.0	27.0	5.0	500

*10mm Base Height



LDPE Base

Part Number	Thread Size	Dimensions (mm)			Standard Pack Quantity
		Stud Length	D	H	
499335†	M8	15.0	19.0	12.0	500
499339	M8	15.0	20.0	8.0	500
499340	M8	25.0	20.0	8.0	100
499341	M8	35.0	20.0	8.0	200
499342	M8	45.0	20.0	8.0	200
499343	M8	15.0	25.0	8.0	500
499344	M8	25.0	25.0	8.0	250
499345	M8	35.0	25.0	8.0	200
499346	M8	45.0	25.0	8.0	100
499347	M10	15.0	25.0	8.0	100
499348	M10	25.0	25.0	8.0	250
499349	M10	35.0	25.0	8.0	200
499350	M10	45.0	25.0	8.0	50
499361	M8	15.0	30.0	8.0	100
499362	M8	25.0	30.0	8.0	100
499363	M8	35.0	30.0	8.0	100
499364	M8	45.0	30.0	8.0	100
499365	M10	15.0	30.0	8.0	200
499366	M10	25.0	30.0	8.0	100
499367	M10	35.0	30.0	8.0	200
499368	M10	45.0	30.0	8.0	250

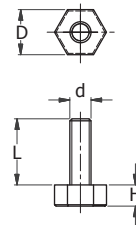
†11mm Base Height

Washing Machine Foot

SR 5793

EPDM Base, Galvanised Steel Stud

- Shore A 70 rubber base prevents appliances from moving due to vibration
- Hexagonal shape for easy level adjustment



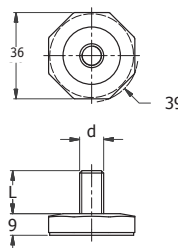
Part Number	Thread Size	Dimensions (mm)			Approximate Load Capacity (kg)	Standard Pack Quantity
		Base Diameter (D)	Stud Length (L)	Base Depth (H)		
1220399	M10	35	30	10.5	200	50

Octagonal Feet

SR 5727

Black rubber base with steel thread

- Anti-vibration
- Anti-slip

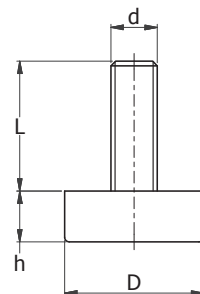


Part Number	Dimensions (mm)			Standard Pack Quantity
	Thread Size (d)	Stud Length (L)	D	
499439	M6	18.0	36.0	50
499440	M6	38.0	36.0	50
499441	M8	18.0	36.0	50
499442	M8	38.0	36.0	50
499443	M10	18.0	36.0	50
499491	M10	38.0	36.0	50

Rubber Fixed Foot

SR 5726

- Steel thread
- Fixed screw
- Rubber foot absorbs vibrations
- Anti-slip

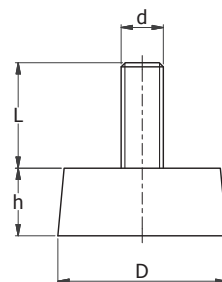


Part Number	Dimensions				Standard Pack Quantity
	Base Diameter (mm)	Thread Size	Stud Length (mm)	h (mm)	
499421	30	M6	18	11	50
499422	30	M6	38	11	50
499423	30	M8	18	11	50
499424	30	M8	38	11	50
499425	30	M10	28	11	50
499426	30	M10	38	11	50
499427	30	M12	28	11	50
499428	30	M12	48	11	50
499429	30	M12	70	11	50
499430	35	M6	18	12	50
499431	35	M6	38	12	50
499432	35	M8	18	12	50
499433	35	M8	38	12	50
499434	35	M10	18	12	50
499435	35	M10	38	12	50
499436	35	M12	18	12	50
499437	35	M12	38	12	50
499438	35	M12	70	12	50

Tapered Rubber Fixed Foot

SR 5726

- Steel or stainless steel thread options
- Tapered rubber foot
- Fixed screw
- Base diameter Ø40mm
- Rubber foot absorbs vibrations
- Anti-slip



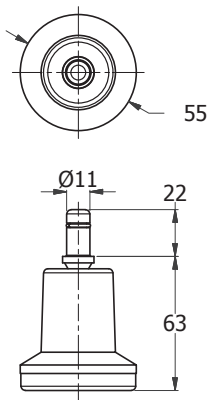
Part Number		Thread Size	Dimensions (mm)			Standard Pack Quantity
Steel Thread	Stainless Steel Thread		Stud Length	D	h	
499405	499413	M6	25	40	16	50
499406	499414	M8	25	40	16	50
499407	499415	M8	50	40	16	50
499408	499416	M10	25	40	16	50
499409	499417	M10	50	40	16	50
499410	499418	M12	25	40	16	50
499411	499419	M12	50	40	16	50
499412	499420	M12	70	40	16	50

Gripneck Feet

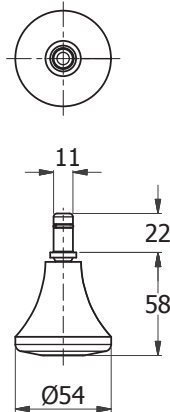
SR 6440

Polyamide Base, Galvanised Steel Stem

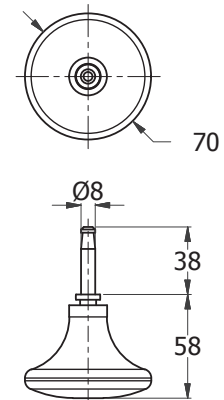
- Gripneck stem for quick fitting
- Smooth base for easy movement
- Type 4 has a hollow base



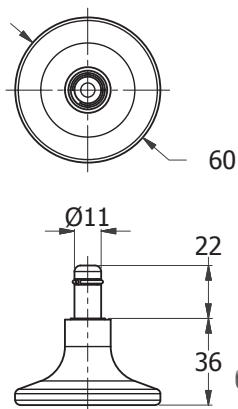
Type 1



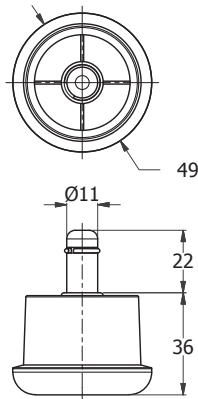
Type 2



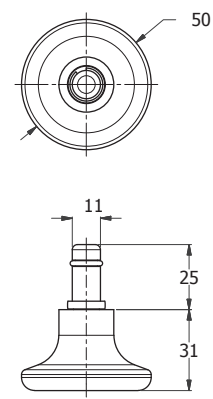
Type 3



Type 4



Type 5



Type 6

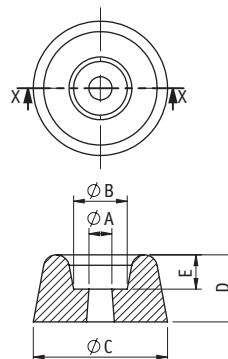
Part Number	Type	Load Bearing (kg)	Standard Pack Quantity
551066	1	55	100
551062	2	50	200
551063	3	50	100
551064	4	50	200
551065	5	55	200
551061	6	50	200

Bumper Foot

SR P-0007



- Screw on recessed bumper foot
- Ideal as feet for small appliances, door stop or spacer
- TPE or PVC options with the latter available in black or white



PVC

Part Number		Dimensions (mm)					Standard Pack Quantity
White	Black	A	B	C	D	E	
048150011307	048150011407	3.2	6	15	7.5	4	100
048200011307	048200011407	4.3	8	20	10	5	100
048250011307	048250011407	4.3	10	25	12.5	6.5	100
048300011307	048300011407	5.3	12	30	15	7.5	50
-	066020011407	4.2	9	19.5	23	7.5	100
-	066025011407	5.2	11	24.5	25	7.5	100

TPE

Part Number	Dimensions (mm)					Standard Pack Quantity
Black	A	B	C	D	E	
66030069912	7	12	30.5	25	9	50

YOUR JOB MADE EASIER:

- **FREE SAMPLES** – try before you buy
- **SMALL PACKS** – available in the quantities you need
- **RELIABLE DELIVERY** – same day shipping from stock
- **OUTSTANDING CUSTOMER SERVICE** – expert advice

Call 0845 758 5070

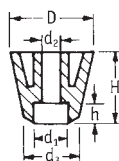
www.essentracomponents.co.uk

Screw-On Feet

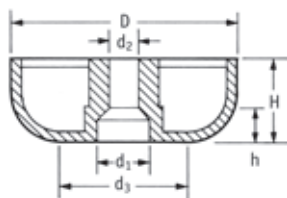
SR 1590

Black LDPE, TPR, Natural or Neoprene Rubber

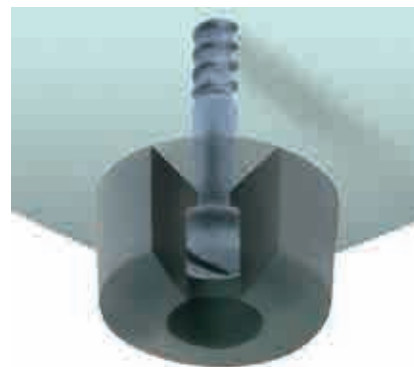
- Ideal for wooden cabinets, equipment enclosures, free-standing electrical/electronic equipment etc.
- Fit with screws (not supplied)
- TPR is recommended for excellent slip resistance



Type 1



Type 2



Part Number		Type	Dimensions (mm)							Standard Pack Quantity
LDPE	TPR		H	D	d3	d1	d2	h		
60470	15129	1	7.1	15.9	13.5	7.9	3.2	4.0	10000	
12477	15130	1	9.5	16.4	16.4	6.4	4.0	5.6	10000	
60785	15124	1	11.3	19.3	18.0	7.5	3.2	7.9	5000	
51607	15125	1	11.9	19.8	18.2	9.5	4.7	6.3	5000	
50842	15111	1	15.9	19.0	12.7	7.9	4.0	4.8	5000	
50954	15127	1	18.2	18.5	17.5	8.5	4.8	7.9	2000	
50769	15126	1	25.4	22.2	12.7	8.7	4.0	14.3	3000	
50701	15140	2	9.5	17.5	17.5	7.9	4.0	5.2	3500	
49098	-	2	16.0	45.0	30.0	10.5	5.0	10.0	1500	
49099	-	2	19.0	55.0	40.0	10.5	5.0	12.0	750	

Part Number	Type	Dimensions (mm)							Standard Pack Quantity
		H	D	d3	d1	d2	h		
Natural Rubber									
462177	2	9.0	16.0	13.0	7.0	3.0	4.0	250	
462178	2	8.0	19.0	16.0	7.0	3.0	6.0	250	
462179	2	8.0	22.0	19.0	10.0	3.0	6.0	250	
462180	2	9.0	25.0	20.0	13.5	5.0	6.0	250	
462181	2	15.0	27.0	20.0	10.0	6.0	10.0	250	
462182	2	23.0	35.0	30.0	9.0	6.0	5.0	250	

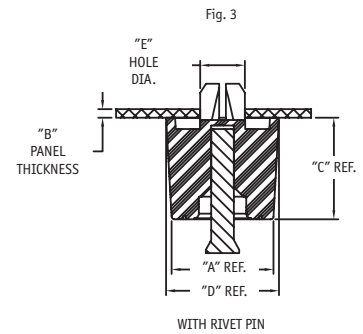
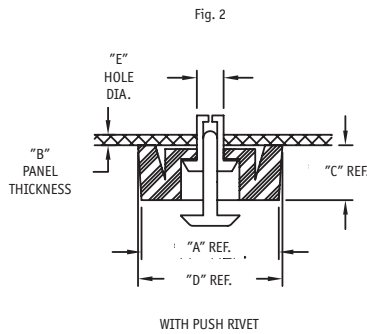
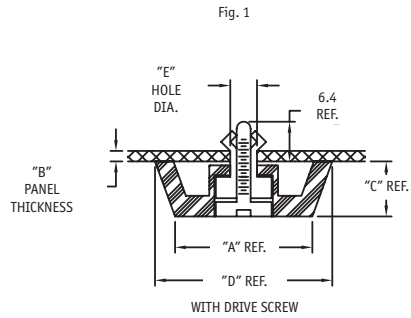
Part Number	Type	Dimensions (mm)							Standard Pack Quantity
		H	D	d3	d1	d2	h		
Neoprene Rubber									
1339688	2	7.1	15.9	13.8	8.0	3.2	4.0	100	
SOF-15140	1	9.5	17.5	-	8.0	4.0	5.2	100	
1339686	2	11.5	19.1	18.0	10.2	5.0	6.35	100	
SOF-15111	1	15.25	19.0	12.7	8.0	4.0	4.8	100	
SOF-15127	2	18.35	18.5	-	8.0	4.8	6.35	100	
SOF-15126	1	25.0	22.5	12.7	8.7	4.0	14.5	100	

SELF-ADHESIVE, SCREW-ON FEET & BUMPERS

Fast Foot

SR 5794

Grommet Material: PA 6, UL94 V2, -50 to 115°C



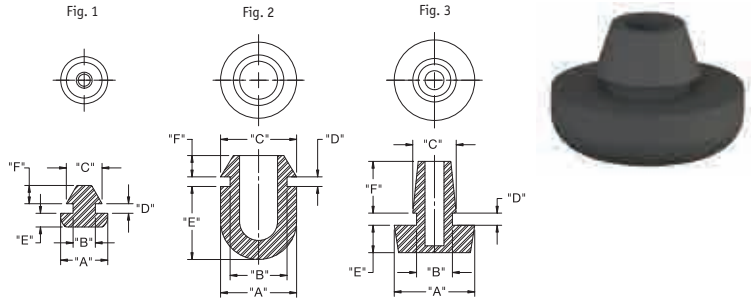
Part Number	Foot Material TPE, UL94 HB	Rivet/Screw Material, UL94 HB	Dimensions (mm)					Fig.	Standard Pack Quantity
			"A" Ref.	"B" Thickness Range	"C" Ref.	"D" Ref.	"E" Hole Ø		
FF-001B	TPE, -50 to 95°C	Acetal, -40 to 95°C	20	1 - 2.3	14	24	5 - 5.1	1	100
FF-004B	TPE, -50 to 95°C	Acetal, -50 to 95°C	18	1 - 2.3	10	10	5 - 5.1	1	100
FF-003-P3X5.5B	TPE, -60 to 95°C	Acetal, -50 to 95°C	13.5	0.8 - 1.8	5.5	14.2	3.1 - 3.2	2	100
FF-005-P4X5B	TPE, -60 to 95°C	Acetal, -50 to 95°C	20	0.8 - 1.8	4.2	21	4.1 - 4.2	2	100
FF-005-P4X6B	TPE, -50 to 95°C	Acetal, -50 to 95°C	20	1.8 - 2.8	4.2	21	4.1 - 4.2	2	100
FF-005-P4X7B	TPE, -50 to 95°C	Acetal, -50 to 95°C	20	2.9 - 3.7	4.2	21	4.1 - 4.2	2	100
FF-005-P4X8B	TPE, -50 to 95°C	Acetal, -50 to 95°C	20	3.8 - 4.8	4.2	21	4.1 - 4.2	2	100
FF-006-P4X6B	TPE, -50 to 95°C	Acetal, -50 to 95°C	14	0.6 - 1	6	15	4.1 - 4.2	2	100
FF-006-P4X7B	TPE, -50 to 95°C	Acetal, -50 to 95°C	14	1 - 2	6	15	4.1 - 4.2	2	100
FF-006-P4X8B	TPE, -50 to 95°C	Acetal, -50 to 95°C	14	2 - 3.1	6	15	4.1 - 4.2	2	100
FF-006-P5X6.5B	TPE, -50 to 95°C	Acetal, -50 to 95°C	14	0.8 - 1.2	6	15	5.1 - 5.2	2	100
FF-006-P5X7.5B	TPE, -50 to 95°C	Acetal, -50 to 95°C	14	1.3 - 2.3	6	15	5.1 - 5.2	2	100
FF-008-P4X6B	TPE, -50 to 95°C	Acetal, -50 to 95°C	20	0.8 - 1.8	6	21	4.1 - 4.2	2	100
FF-008-P4X7B	TPE, -50 to 95°C	Acetal, -50 to 95°C	20	1.9 - 2.8	6	21	4.1 - 4.2	2	100
FF-008-P4X8B	TPE, -50 to 95°C	Acetal, -50 to 95°C	20	2.9 - 4	6	21	4.1 - 4.2	2	100
FF-009-P4X6B	TPE, -50 to 95°C	Acetal, -50 to 95°C	20	0 - 0.8	8	21	4.1 - 4.2	2	100
FF-009-P4X7B	TPE, -50 to 95°C	Acetal, -50 to 95°C	20	0.8 - 2	8	21	4.1 - 4.2	2	100
FF-009-P4X8B	TPE, -50 to 95°C	Acetal, -50 to 95°C	20	2.1 - 3	8	21	4.1 - 4.2	2	100
FF-010-P4X7B	TPE, -50 to 95°C	Acetal, -50 to 95°C	14	1 - 2	9	15	4.1 - 4.2	2	100
FF-010-P4X8B	TPE, -50 to 95°C	Acetal, -50 to 95°C	14	2 - 3.1	9	15	4.1 - 4.2	2	100
FF-13-P3.5X4.5B	TPE, -50 to 95°C	Acetal, -50 to 95°C	10	0.5 - 1.2	4	10.8	3.6 - 3.7	2	100
FF-13-P3.5X5.5B	TPE, -50 to 95°C	Acetal, -50 to 95°C	10	1.2 - 2	4	10.8	3.6 - 3.7	2	100
FF-13-P3.5X6.0B	TPE, -50 to 95°C	Acetal, -50 to 95°C	10	1.5 - 2.2	4	10.8	3.6 - 3.7	2	100
FF-13-P3.5X7.0B	TPE, -50 to 95°C	Acetal, -50 to 95°C	10	2.5 - 3.2	4	10.8	3.6 - 3.7	2	100
FF-026-M40*	TPE, -60 to 85°C	Polypropylene, 0 to 65°C	18	0.5 - 1.2	18	20	8 - 8.1	3	1000

*Does not include Grommet

Push on Feet

SR 5795

Black TPE, UL94 HB, -50 to 95°C



Part Number	Recommended Mounting Hole	Recommended Panel Thickness	Dimensions (mm)							Fig.	Standard Pack Quantity
			"A" Ø	"B" Ø	"C" Ø	"D"	"E"	"F" Ref.			
POF-40022	3.7 - 3.8	3.2	7.9	3.2	4.4	3.3	1.6	3.3	1	100	
POF-40048	4.5 - 4.6	1.5	7.9	3.7	6.1	1.6	2.3	3	1	100	
POF-40059	9.5 - 9.6	1.5	12.7	9.5	12.7	1.6	12.2	3.6	2	100	
POF-50185	6 - 6.1	1.9	13.4	6	7.3	2	4.6	8.6	3	100	
POF-12664	7 - 7.1	1.2	15.7	7	8.6	1.3	5.1	4.1	3	100	

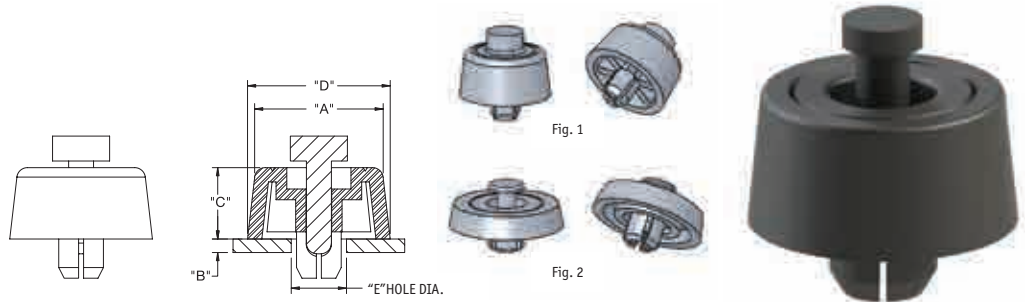
Soft Fast Foot

SR 5796

Foot: Black TPE, 86 Shore A,

UL94 HB, -60 to 95°C

Pin: PP, UL94 HB, 0 to 65°C



Part Number	Recommended Mounting Hole "E"	Recommended Panel Thickness "B"	Dimensions (mm)			Fig.	Standard Pack Quantity
			"A" Ø	"C" Ø	"D" Ø		
SFF-018	7.75	0.8 - 1.5	18	10	20	1	100
SFF-021	7.75	5 - 8	20	6	21	1	100
SFF-023	7.75	0.8 - 1.5	23	5	25	2	100
SFF-028	7.75	0.8 - 1.5	18	15	20	1	100
SFF-124-A4*	8.1	0.8 - 1.2	18	15	20	1	200
SFF-125-A4†	8.1	0.8 - 1.2	18	15	20	1	200

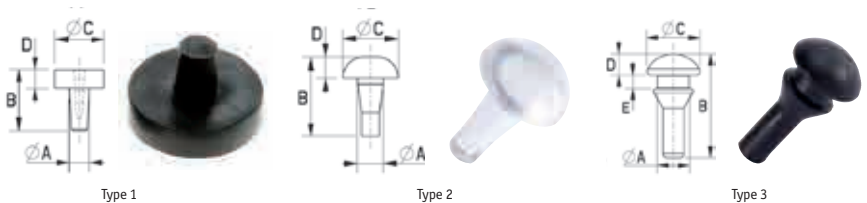
*PP †PP & Elastomer

Insert Foot

SR 6449

PVC

- Black or Natural
- Prevents sliding and reduces vibration
- Easy mounting through simple design



Part Number	Colour	Recommended Panel Thickness	Dimensions (mm)					Type	Standard Pack Quantity
			A	B	C	D	E		
049080011407	Black	-	3	10	8	3	-	1	100
049120011407	Black	-	4	10	12	3	-	1	100
049130011407	Black	-	5	13	13	3	-	1	100
049160011407	Black	-	5	10	16	4	-	1	100
049100000007	Natural	-	4.2	13	9	3.5	-	2	100
047060011407	Black	1.2	6	19.5	10	4	2.5	3	100

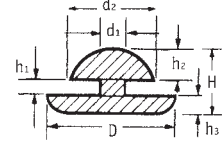
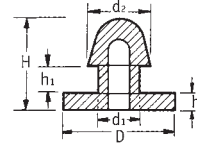
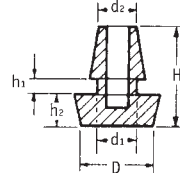
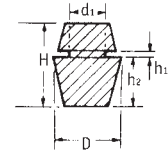
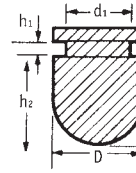
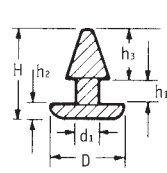
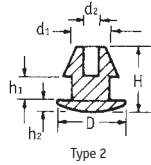
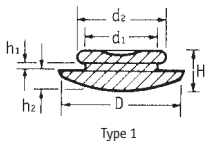
SELF-ADHESIVE, SCREW-ON FEET & BUMPERS

Grommet Feet

SR 1591

Black PVC

- Ideal for housings and cases
- Easy to fit; simply push into punched or drilled holes



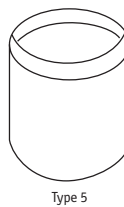
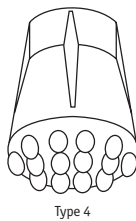
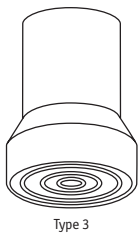
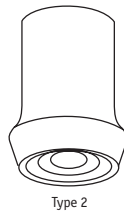
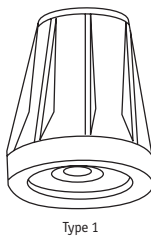
Part Number	Type	Dimensions (mm)							Standard Pack Quantity
		D	d1	d2	H	h1	h2	h3	
50680	1	19.0	12.0	13.1	6.5	0.8	3.2	-	10000
12493	1	15.4	9.8	12.7	7.0	1.6	2.7	-	10000
12494	1	19.0	12.8	15.9	7.5	1.6	3.2	-	3500
50493	2	10.3	4.5	2.2	7.6	1.6	2.0	-	5000
12664	2	15.8	6.8	4.0	9.7	1.5	5.0	-	10000
40022	3	7.9	3.2	-	8.3	3.2	1.6	3.5	10000
40048	3	7.9	3.7	5.5	7.0	1.6	2.4	3.0	10000
1347534*	4	12.5	9.5	11.8	17.0	1.6	12.0	3.5	5000
12495	5	10.9	6.9	7.6	12.8	0.7	8.1	-	10000
50185	6	12.0	6.0	5.8	15.2	2.1	4.6	-	10000
1347530	7	25.3	12.5	15.3	20.0	5.0	4.0	-	2000
15509	8	17.5	11.1	13.3	10.0	2.6	4.0	4.0	10000

*Style variation on flanged section.

Walking Aid Feet

SR 1503

Rubber



Rubber

Part Number	Type	Colour	Dimensions (mm)		Standard Pack Quantity
			Stick Diameter	Height	
497454*	1	Grey	19	51.5	200
497455*	2	Black	19	38.5	400
15121	3	Black	19	42.0	700
497456*	4	Black	19	39.0	500
497457*	1	Grey	22	55.0	175
497458*	2	Black	22	50.0	300
15119	3	Black	22	42.0	700
497459*	4	Black	22	39.0	400
497460*	1	Grey	25	52.0	200
497461*	2	Black	25	50.0	350
15112	3	Black	25	42.0	700
497462*	4	Black	25	39.0	500

*With metal inserts

Black Ferrule-Type

Part Number	Colour	Dimensions (mm)		Standard Pack Quantity
		Stick Diameter	Height	
497463	5	10	26.0	1000
497464	5	13	26.5	1000
497465	5	16	26.0	1500
497466	5	19	32.0	1000
497467	5	22	38.5	750
497468	5	25	37.5	500

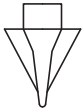
Stem Bumpers

SR 5797

Natural Polyamide

- Used to protect surfaces from contact

Lead Types



Arrow: A



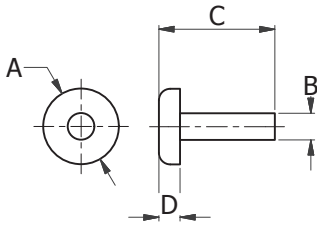
No Lead: N



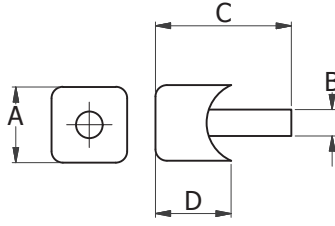
Tapered: T



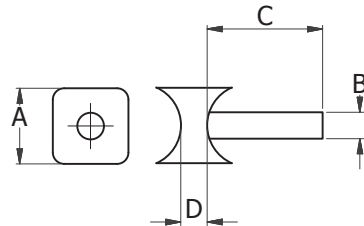
Step: S



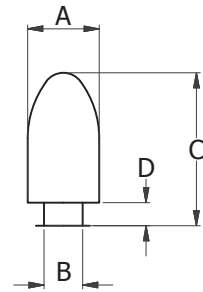
Type 1



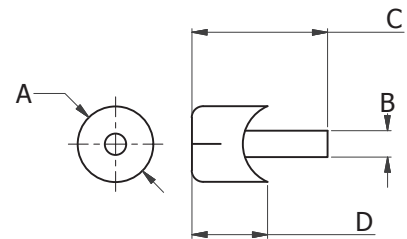
Type 2



Type 3



Type 4



Type 5

Part Number	Type	Dimensions (mm)				Standard Pack Quantity
		A	B	C	D	
BST015A	1A	11.1	3.2	13.9	3.2	29000
BST027A	1A	12.7	5.1	15.4	1.6	20000
BST005A	1N	9.2	5.1	6.4	3.8	16000
BST025A	1N	12.7	4.8	8.3	3.8	8000
BST010A	1S	9.5	4.8	15.2	7.6	15000
BST020A	1S	12.7	4.8	19.8	7.5	8000
BST030A	1S	12.7	6.4	16.3	4.8	5000
BST040A	1S	12.7	8.5	21.8	11.1	6500
BST072A	1S	19.1	6.5	10.2	4.8	7000
BST100A	1S	28.6	8.1	12.6	4.2	5000
BST140A	1S	31.8	9.5	21.4	9.7	2300
BST075C	1T	19.1	6.4	17.5	4.8	10000
BST095A	1T	25.4	6.4	16.7	4	7000
BST115A	2S	19.1 x 25.4	6.4	14.5	3.1	5500
BST110A	3S	19.1 x 19.1	6.8	12.5	2.3	5000
BST135A	3S	15.8 x 15.8	6.4	11.4	3.1	5500
BST012A	4N	9.5	6.6	22.4	16.1	10000
BCS030C	5S	19.1	6.5	9.1	4.8	8000
BST070A	5S	24.9	6.4	19.1	12.7	3500
BST150A	5T	19.1	6.8	18	4.8	8000

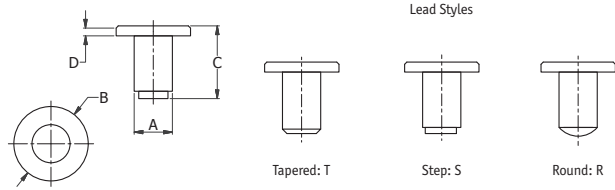
SELF-ADHESIVE, SCREW-ON FEET & BUMPERS

Flat Headed Stem Bumpers

SR 5798

Natural Polyamide or Black LDPE

- Designed to rest against a flat or tangent surface



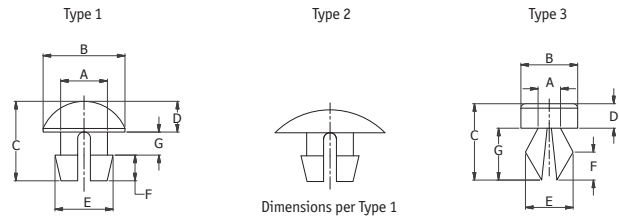
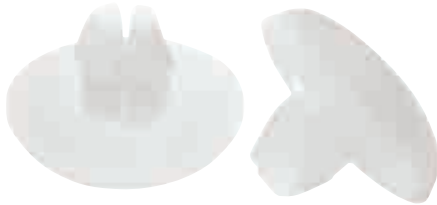
Part Number	Type	Colour	Dimensions (mm)				Standard Pack Quantity
			A	B	C	D	
BFS010A	T	Natural	3.2	10.3	7.5	1.6	15000
BFS015A	S	Natural	6.4	12.7	15.1	6.4	11000
BFS020A	R	Natural	4.0	7.8	4.4	1.1	10000
BFS035A	T	Natural	4.7	12.7	8.0	3.2	9000
BFS060A	R	Natural	6.4	12.7	11.1	4.0	15000
BFS080A	S	Natural	6.6	19.1	11.1	2.4	9000
BFS100A	S	Natural	8.1	25.4	10.5	4.6	7000
BFS110A	S	Natural	9.7	37.1	10.5	4.7	3000
BFSA010A	T	Black	3.2	10.3	7.5	1.6	15000
BFSA015A	S	Black	6.4	12.7	15.1	6.4	11000
BFSA035A	T	Black	4.7	12.7	8.0	3.2	9000
BFSA060A	R	Black	6.4	12.7	11.1	4.0	15000
BFSA080A	S	Black	6.6	19.1	11.1	2.4	9000
BFSA100A	S	Black	8.1	25.4	10.5	4.6	7000
BFSA110A	S	Black	9.7	37.1	10.5	4.8	3000

Split Stem Bumpers

SR 5799

Natural Polyamide

- Produced with a split-stem portion to make insertion easy and removal difficult



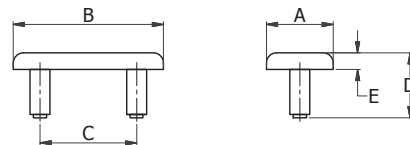
Part Number	Type	Dimensions (mm)							Standard Pack Quantity
		A	B	C	D	E	F	G	
BDH005A	1	2.8	6.4	5.2	2.4	3.2	1.2	1.6	40000
BDH010A	1	3.2	9.5	7.8	1.2	3.9	3.3	3.3	30000
BDH020A	2	4	9.5	6.7	2.4	4.4	2.4	2.4	20000
BDH025A	2	4.8	8.7	5.2	1.3	5.5	2.1	1.8	35000
BDH030A	2	4.8	9.9	6.4	2.4	5.5	2.2	1.7	24000
BDH040A	2	5.3	9.5	8.7	1.6	6.2	3.2	4	20000
BSS010A	3	3.9	12.7	7.9	1.6	4.2	1.6	4.8	14000
BSS015A	3	6.6	19	15.9	4.7	7.4	3.2	7.9	10500

Double Stem Bumpers

SR 5801

Natural Polyamide

- Designed for applications requiring a bumper with a large head area



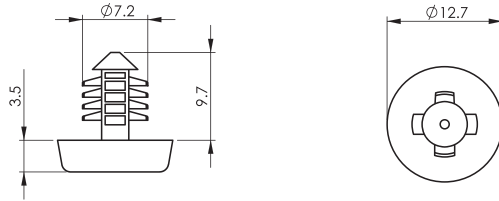
Part Number	Dimensions (mm)					Standard Pack Quantity	
	To Fit Hole	A	B	C	E		
BDS010A	4.8	9.5	25.4	15.9	12.7	3.2	3500

Foot, Barbed Mount

SR 5802

Rivet: Black PA 6/6, UL94 V2, -40 to 85°C

Base: TPE, -40 to 100°C



Part Number	Hole $\varnothing \pm 0.08$	Min. Panel Thickness	Standard Pack Quantity
FBR-1	6.8	10	1000

Foot, Snap Rivet Mount

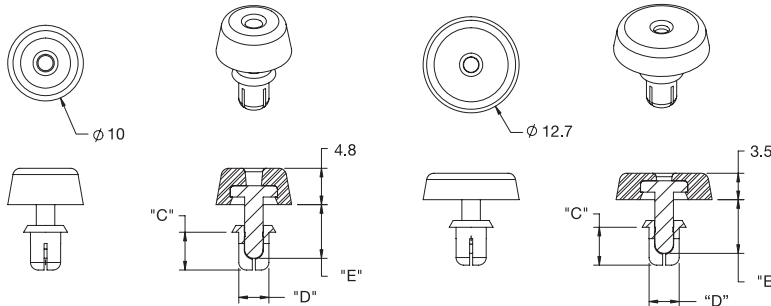
SR 5803

Rivet: Black PA 6/6, UL94 V2, -50 to 115°C

Base: TPE, -40 to 100°C

Fig. 1

Fig. 2



Part Number	Hole \varnothing "G"	Dimensions (mm)				Fig.	Standard Pack Quantity
		Panel Thickness "F"	"C"	"D"	"E"		
FSR-1	3.6 - 3.7	1.2 - 2.1	3.5	3.5	5.1	1	1000
FSR-2	3.6 - 3.7	2.1 - 3	4.5	3.5	6.1	1	1000
FSR-3	4.1 - 4.2	2.5 - 3.5	5	4	7.1	1	1000
FSR-4	3.6 - 3.7	1.2 - 2.1	3.5	3.5	5.1	2	1000
FSR-5	3.6 - 3.7	2.1 - 3	4.5	3.5	6.1	2	1000
FSR-6	4.1 - 4.2	2.5 - 3.5	5	4	7.1	2	1000

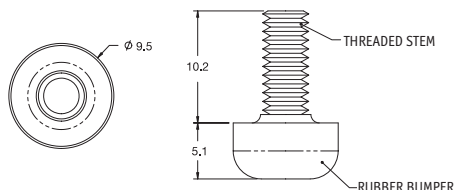
Threaded Insert Bumper

SR 5804

Brass Stem

Black Butyl Rubber Bumper (Shore A 40-50)

- Typical compression for 5kg maximum load = 0.8



Part Number	Thread Type	Standard Pack Quantity
TB-1	#6-32	100
TB-2	#8-32	100
1342660	M3	100
1342662	M4	100

Plug In Foot

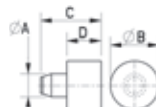
SR 6448

LDPE or PVC

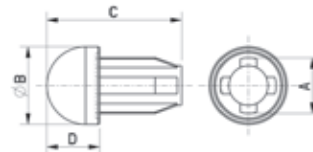
- Grey or Black
- Simple but effective foot for furniture or other constructions
- Prevents sliding and absorbs vibrations
- Type 1 made from LDPE
- Type 2 made from PVC



Type 1



Type 2



Part Number	Colour	Dimensions (mm)				Type	Standard Pack Quantity
		A	B	C	D		
068010000203	Grey	4.7	10	12	7	1	500
122001059907	Black	6.8	9.5	16.5	6.5	2	500

Glass Foot

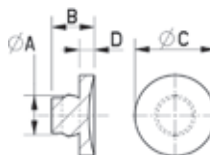
SR 6447

PVC or EVA

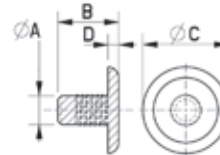
- Type 1 - PVC
- Type 2 - EVA
- Supports and protects glass plates on hard surfaces and constructions
- Compensates for small tolerances in constructions



Type 1



Type 2

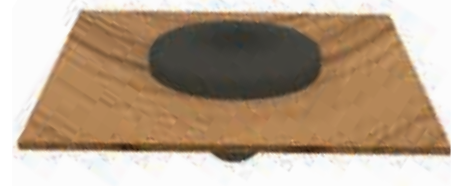
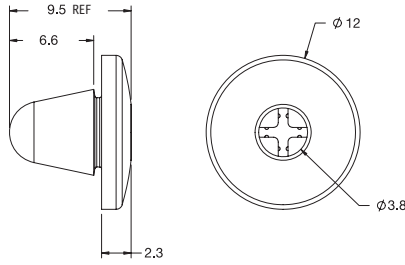


Part Number	Dimensions (mm)				Type	Standard Pack Quantity
	A	B	C	D		
069016000007	8	9	16	3	1	500
070012000048	4.2	8.6	12	1.5	2	500

Blind Install Bumper

SR 5805

Silicone Rubber, UL94 HB, -40 to 150°C



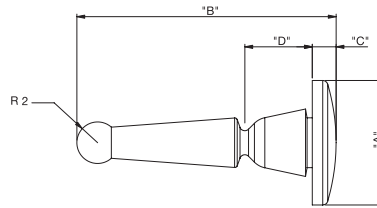
Part Number	Mounting Hole	Panel Thickness	Standard Pack Quantity
BIB-1	5 - 5.4	0.06 - 0.8	1000

Break-Away Bumper

SR 5806

Black Silicone Rubber, Shore A 40 - 50,
UL94 HB, -40 to 150°C

- Mounting tab designed to break-away after assembly to save space

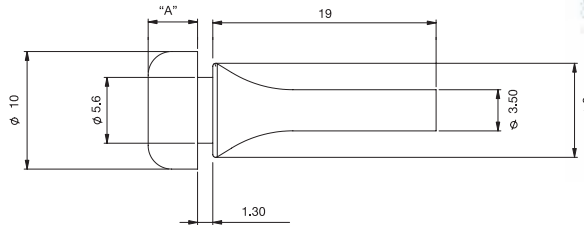


Part Number	Dimensions (mm)						Standard Pack Quantity
	"A"	"B"	"C"	"D"	Panel Thickness	Hole Ø	
BAB-1	12	25	2.3	6.5	0.6 - 0.8	5 - 5.4	1000
BAB-2	12	25	2.3	6.5	0.6 - 0.8	5 - 5.4	1000
BAB-3	10	20	2	4.3	0.5	4.7 - 5	1000

Pull Mount Bumper

SR 5807

Black Silicone Rubber, Shore 63 A,
UL94 HB, -40 to 150°C



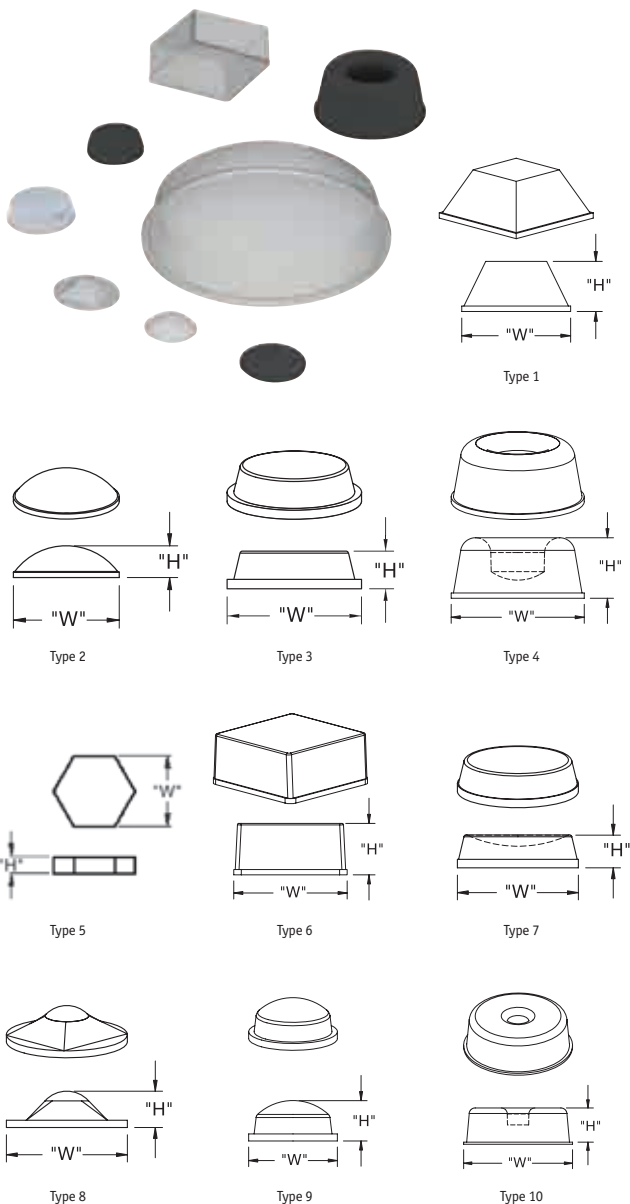
Part Number	Dimensions (mm)				Standard Pack Quantity
	"A"	Hole Ø	Panel Thickness	Colour	
BPM-1-60	3	6 - 6.35	1.5	Grey	1000
BPM-2	4.2	6 - 6.35	1.5	Black	1000
BPM-3-60	5	6 - 6.35	1.5	Black	1000

Stick-On Feet/Buffers

SR 1593

Polyurethane

- Ideal as feet or as furniture door buffers
- Easy to apply
- Self-adhesive backing
- Suitable for most smooth and dry surfaces



Black & Clear

Part Number		Type	Dimensions (mm)		Bumpers per Pad	Standard Pack Quantity
Black	Clear		Height (H)	Base Diameter (W)		
RBS-20BK	-	1	2.5	10.2	242	5082
32426	494481	1	3.1	12.7	200	3000
32427	462164	1	5.7	12.7	200	3000
RBS-29BK	RBS-29	1	6.4	19.8	98	2940
462171	462172	1	7.5	20.5	78	1000
494482	-	1	13.2	20.5	72	1000
-	462155	2	1.9	6.4	561	10000
-	462156	2	2.2	8.0	392	10000
RBS-7BK	RBS-7	2	2.2	8.6	450	5400
461230	461232	2	3.1	10.0	288	3000
32430	32429	2	5.0	11.1	242	3000
32432	461234	2	9.5	19.0	98	1000
461236	461238	3	1.8	10.0	288	3000
RBS-5BK	RBS-5	3	1.6	12.7	200	2000
461241	462169	3	1.9	19.0	98	3000
RBS-72BK	RBS-72	3	2.5	31.5	32	2400
494483	494484	3	3.0	19.7	84	4000
RBS-34BK	RBS-34	3	3.1	9.5	300	6000
RBS-24BK	RBS-24	3	3.1	20.5	72	2520
32433	461235	3	3.5	7.5	288	3000
32435	32434	3	3.5	12.7	200	3000
462159	462160	3	4.0	10.0	242	10000
39864	494485	3	4.0	19.0	84	2600
-	462165	3	4.5	14.0	128	5000
RBS-35BK	RBS-35	3	4.8	9.5	200	5000
RBS-41BK	RBS-41	3	5.1	20.0	84	3360
462168	-	3	6.0	18.0	84	2000
43045	-	3	6.2	20.0	84	2000
RBS-6BK	RBS-6	3	6.3	12.7	200	5000
RBS-11BK	RBS-11	3	10.1	15.9	128	2560
462176	494486	4	10.1	22.3	72	1000
RBS-36BK	RBS-36	6	4.7	25.4	55	2310
RBS-4BK	RBS-4	6	9.7	19.8	100	5600
RBS-18BK	RBS-18	7	3.5	12.7	200	2000
-	RBS-33-SD	8	3.8	12.7	200	5000
RBS-40BK	RBS-40	9	1.6	6.4	578	15028
RBS-27BK	RBS-27	9	2.2	7.9	450	5400
RBS-12BK	RBS-12	9	3.8	9.6	72	7200
RBS-22BK	RBS-22	9	5.4	9.6	300	6000
RBS-2BK	RBS-2	9	5.1	11.1	242	5082
RBS-15BK	RBS-15	9	7.9	16.0	128	3200
RBS-8BK	RBS-8	9	9.6	17.6	98	2254
RBS-37BK	RBS-37	9	14.2	18.3	100	1500
RBS-39BK	RBS-39	9	1.9	19.1	84	5040
RBS-30BK	RBS-30	10	15.8	45.7	100	500

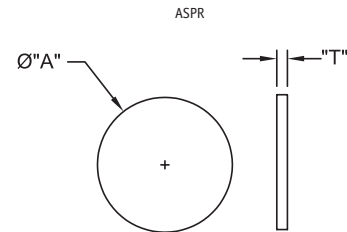
Grey & White

Part Number		Type	Dimensions (mm)		Bumpers per Pad	Standard Pack Quantity
Grey	White		Height (H)	Base Diameter (W)		
461229	-	1	2.5	10.0	242	3000
462170	32428	1	7.5	20.5	78	1000
461231	-	2	3.1	10.0	288	3000
-	32431	2	8.0	16.0	128	1000
461233	-	2	9.5	19.0	98	1000
461237	-	3	1.8	10.0	288	3000
462173	-	3	3.0	19.7	84	4000
461240	461239	3	3.5	12.7	200	3000
32436	-	4	10.1	22.3	72	1000

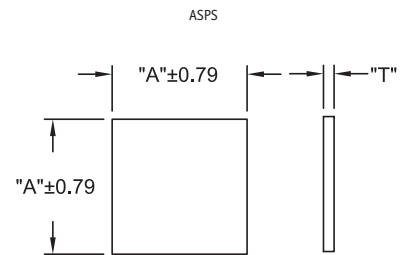
Anti Slip Pads

SR 5808

Rubber adhesive/PE foam tape/Silicone coated paper liner, -29 to 66 °C



Part Number	Dimensions (mm)		Standard Pack Quantity
	"A"	"T"	
ASPR-8-062	12.7	1.6	1000
ASPR-12-062	19.1	1.6	1000
ASPR-16-062	25.4	1.6	1000
ASPR-8-125	12.7	3.2	1000
ASPR-12-125	19.1	3.2	1000
ASPR-16-125	25.4	3.2	1000
ASPS-8-062	12.7	1.6	40/pad
ASPS-12-062	19.1	1.6	20/pad
ASPS-16-062	25.4	1.6	8/pad
ASPS-8-125	12.7	3.2	40/pad
ASPS-12-125	19.1	3.2	20/pad
ASPS-16-125	25.4	3.2	8/pad



Anti Skid Adhesive Discs

SR 1865

Black Foam with Permanent Rubber Based Adhesive

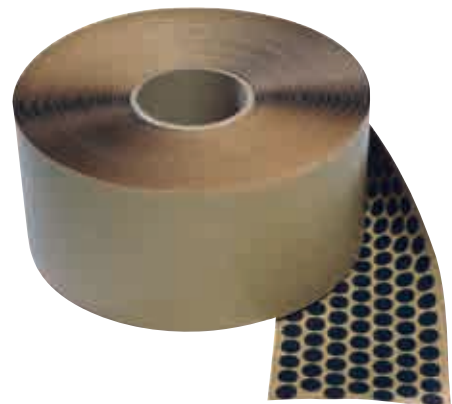
- Single sided foam with non-skid properties
- Designed to bond to many surfaces including: corrugated card, chipboard, wood, low surface energy plastics and powder coats

Discs on a roll

Part Number	Dimensions (mm)		Rolls per pack	Standard Pack Quantity
	Diameter	Thickness		
471801	12.7	1.6	18	1000
471804	12.7	3.2	18	1000

Discs on Pads of 4

Part Number	Dimensions (mm)		Pads per pack	Standard Pack Quantity
	Diameter	Thickness		
471802	12.7	1.6	4	10000
471805	12.7	3.2	4	5000



SELF-ADHESIVE, SCREW-ON FEET & BUMPERS

Stick-On Discs

SR 1577

Black Rubber

- Self-adhesive
- Suitable for smooth and dry surfaces
- Does not leave scuff marks when removed
- Slip-resistant



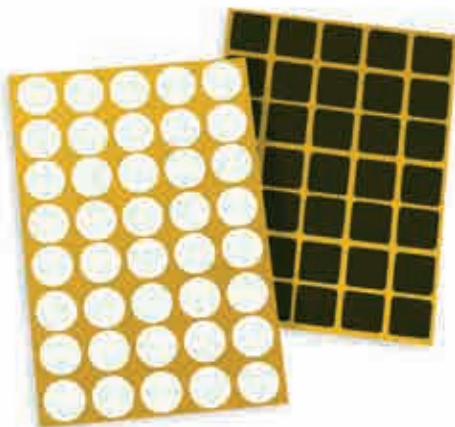
Part Number	Dimensions (mm)		Standard Pack Quantity
	Height	Diameter	
49093	1.5	10	1000
49094	1.5	20	1000
49095	1.5	30	1000
49096	1.5	40	500
49097	1.5	45	500

Self-Adhesive Felt Pads

SR 1589

Brown or White Felt

- Can be used on the base of feet or inserts for smooth movement over floor surfaces



Round

Part Number		Diameter (mm)	Standard Pack Quantity
Brown	White		
463918	463947	10.0	5076
463919	463948	14.0	1500
463920	463949	16.0	1000
463921	463950	18.0	1000
463922	463951	20.0	1000
463923	463952	22.0	1000
463924	463953	24.0	1008
463925	463954	26.0	1024
463926	463955	28.0	1008
463927	463956	30.0	1008
463928	463957	32.0	700
463929	463958	36.0	504
463930	463959	40.0	504
463931	463960	45.0	500
463932	463961	50.0	400
463933	463962	60.0	400
463934	463963	70.0	300

Square

Part Number		Size (mm)	Standard Pack Quantity
Brown	White		
463935	463964	20 x 20	1000
463936	463965	25 x 25	1024
463937	463966	30 x 30	1008
463938	-	34 x 34	504
463939	463968	40 x 40	504
463940	-	45 x 45	500
463941	463970	50 x 50	400
463942	463971	100 x 100	490

Rectangular

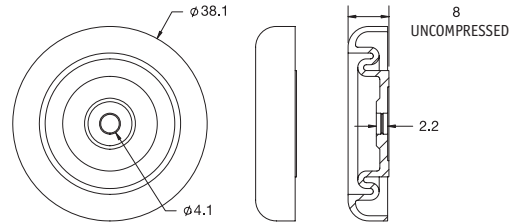
Part Number		Size (mm)	Standard Pack Quantity
Brown	White		
463943	463972	20 x 30	1008
463944	463973	20 x 40	1000
463945	463974	25 x 35	1008
463946	463975	25 x 50	900

Shock & Vibration Dampening Foot

SR 5809

TPE, UL94 HB, -50 to 95°C

- For Snap Rivet selection refer to page 838



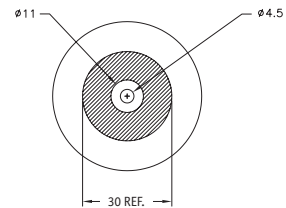
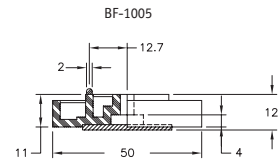
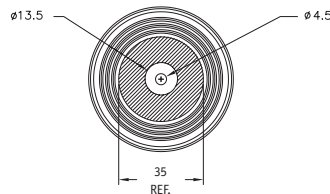
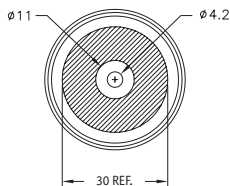
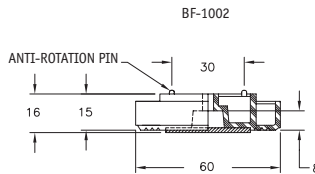
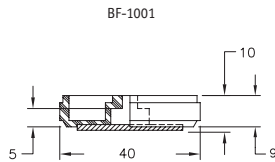
Part Number	Shore Hardness	Panel Thickness Range	Standard Pack Quantity
SVF-1	75	0.3 - 4.3	400
SVF-2	64	0.4 - 4.3	400

Big Foot

SR P-0037

Foot: Black ABS, UL94 HB, 0 to 85°C

Cushion: Rubber & PA - Fibre, 0 to 38°C



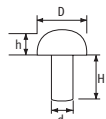
Part Number	Recommended Mounting Screw	Load Capacity	Standard Pack Quantity
BF-1001	#8 or M4 Pan Head	10 kg	100
BF-1002	#8 or M4 Pan Head	10 kg	100
BF-1005	#8 or M4 Pan Head	10 kg	100

Stacking Buffers

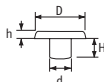
SR 1503

Black PVC

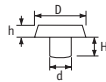
- Push-fit range ideal for stacking chairs



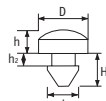
Type 1



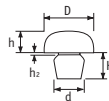
Type 2



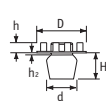
Type 3



Type 4



Type 5



Type 6

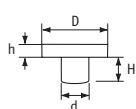


Transparent PVC

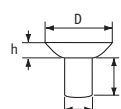
- Suitable for glass shelf and table-top supports
- Concave head provides a light suction effect

Black PVC

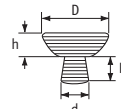
Part Number	Type	Dimensions (mm)					Standard Pack Quantity
		D	d	h	h2	H	
1251328	1	9.0	5	3.0	-	6.0	5000
1251325	1	14.0	6	6.5	-	15.0	5000
1251338	1	20.0	10	8.0	-	10.0	2500
1251335	2	9.5	5	3.0	-	6.0	5000
1251334	2	12.0	6	3.0	-	7.5	5000
1251337	2	14.0	6	4.0	-	15.0	5000
1251336	2	18.0	8	5.0	-	15.0	5000
1251330	2	20.0	8	5.0	-	15.0	2500
1251327	2	24.0	11	5.0	-	13.0	2500
1251333	3	12.0	6	2.5	-	9.0	5000
1287139	3	12.0	6	3.8	-	9.0	5000
1287140	4	12.0	5	4.0	4.5	8.0	5000
1251339	5	12.0	6	2.0	1.0	-	5000
1251329	5	12.0	6	4.5	1.0	-	5000



Type 1



Type 2



Type 3

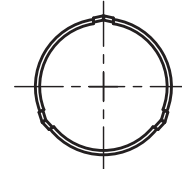
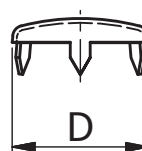
Part Number	Type	Dimensions (mm)				Standard Pack Quantity
		D	d	h	H	
JK3-8	1	15	8	5.0	8.0	1000
1251324	2	15	6	4.0	10.0	5000
1251326	3	20	6	10.0	4.0	5000
1251340	3	25	7	12.0	5.0	5000

Glides with Lugs

SR 6417

Nickel Plated

- Glides with three lugs for fixing
- Ideal for wooden furniture



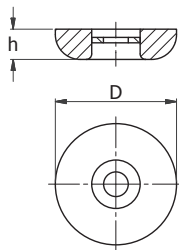
Part Number	Diameter (mm)	Standard Pack Quantity
550453	15.0	200
550454	18.0	200
550455	21.0	200
550456	24.0	200

PTFE Glider Screw Fixing

SR 5733

PTFE

- Steel washer
- 4.5mm diameter screw hole

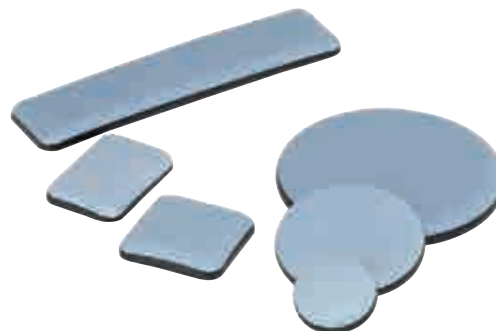


Part Number	Dimensions (mm)		Standard Pack Quantity
	D	h	
499482	19	5.5	200
499483	22	5.5	200
499484	25	5.0	200
499485	30	5.0	200
499486	40	5.5	200
499487	50	5.5	200

PTFE Glider Adhesive Fixing

SR 1461

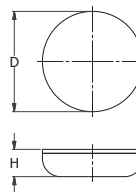
- PTFE base with adhesive backing
- Available in square, rectangular and round



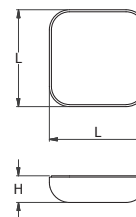
Square & Rectangular

Part Number	Dimensions (mm)			Standard Pack Quantity
	L	L1	H	
499488	24	24	6.5	200
499490	30	30	6.5	200
499494	40	40	7.0	200
499495	45	45	7.0	200
499496	50	50	6.5	200
499489	24	35	6.8	200
499497	19	70	6.3	200
499492	24	100	6.3	200

Round



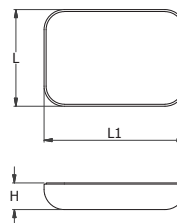
Square



Round

Part Number	Dimensions (mm)		Standard Pack Quantity
	D	H	
499475	19	4.3	200
499476	22	6.3	200
499477	25	6.7	200
499478	30	6.5	200
499479	40	6.3	200
499480	50	6.4	200
499481	65	6.3	200

Rectangular

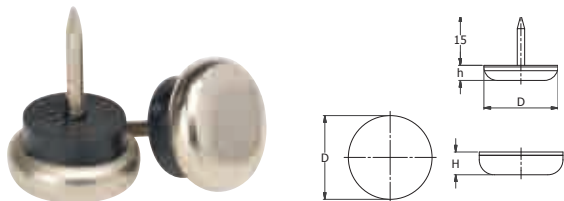


Nail On Glides

SR 1460

Steel Nail

- A choice of PTFE, Chrome or Polyamide Base



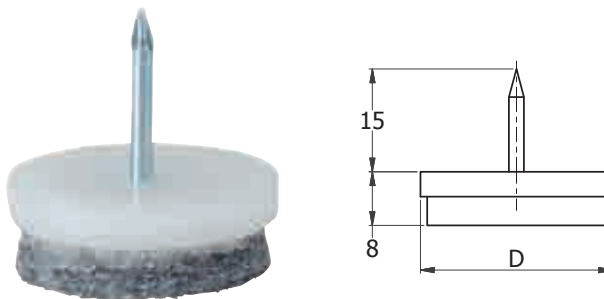
Part Number	Dimensions (mm)		Standard Pack Quantity
	Base Style	D (mm)	
499499	Grey PTFE	19	200
499500	Grey PTFE	22	200
499501	Grey PTFE	25	200
499502	Grey PTFE	30	200
499503	Grey PTFE	37	200
497411	Metal	19	200
497412	Metal	22	200
497413	Metal	24	200
497414	Metal	27	200
497415	Metal	30	200
497416	Brown Polyamide	19	200
497417	Brown Polyamide	24	200
499734	Brown Polyamide	27	200
551142	Natural Polyamide	19	200
551143	Natural Polyamide	24	200
551144	Natural Polyamide	27	200

Nail On Glides with Felt Base

SR 1460

PTFE

- Natural PTFE
- Felt Base for smooth glide action



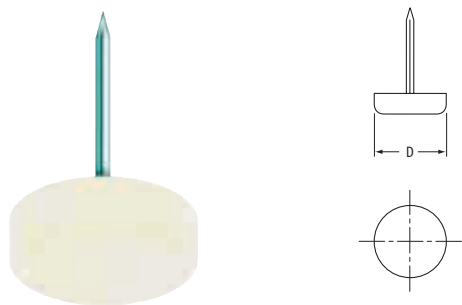
Part Number	Diameter	Length	Standard Pack Quantity
550443	17.0	15.0	200
550444	20.0	15.0	200
550445	22.0	15.0	200
550446	24.0	15.0	200
550447	28.0	15.0	200
550448	30.0	15.0	200

Nail-on Plastic Feet

SR 1598

HDPE

- Ideal for wooden furniture



Part Number	Colour	D (ins)	D (mm)	Standard Pack Quantity
HD01	Natural	1/2	12.7	10000
HD02	Natural	3/8	15.9	8000
HD03	Natural	3/4	19.1	6000
HD05	Natural	7/8	22.2	5000
HDW02	Woodtone	3/8	15.9	8000
HDW03	Woodtone	3/4	19.1	6000
HDW05	Woodtone	7/8	22.2	5000

Nail-on Felt Glides

SR 1563

HDPE with Felt Base



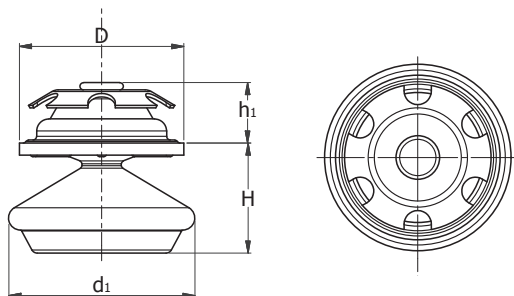
Part Number	Colour of Felt	Diameter (mm)	Standard Pack Quantity
463881	Grey	19.0	2500
463882	Black	22.0	5000
463883	Grey	25.0	5000
463884	Black	28.0	2500

Spring Insert Glide – Round

SR 6453

Steel

- Swivel Glide with spring insert for a one piece application
- With either Steel or Polyamide Base options



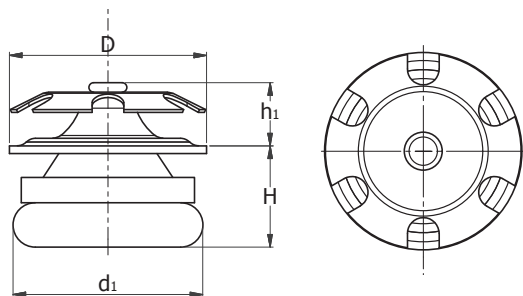
Part Number		Dimensions (mm)				Standard Pack Quantity
Steel Base	Polyamide Base	D	d1	H	h1	
551619	551614	16.0	31	15.8	9.7	200
551620	551615	19.0	31	15.8	8.7	200
551621	551616	22.0	31	15.8	8.7	200
551622	551617	25.0	31	15.8	9	200
551623	551618	28.5	31	15.8	9	200

Spring Insert Tilt Glide - Round

SR 6425

Steel

- A clean finish foot for furniture
- Swivel Glide with spring insert for a one piece application
- Steel Base



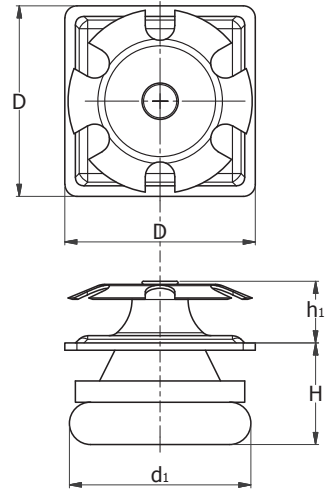
Part Number	Dimensions (mm)				Standard Pack Quantity
	D	d1	H	h1	
551588	19.0	24	16	10	200
551589	22.0	24	16	10	200
551590	25.0	24	16	10	200
551591	28.5	30	16	10	200

Spring Insert Tilt Glide – Square

SR 6427

Steel

- Swivel Glide with spring insert for a one piece application
- With Steel Base



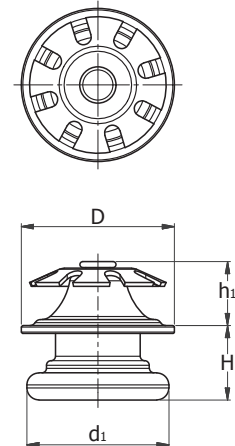
Part Number	Dimensions (mm)				Standard Pack Quantity
	D	d1	H	h1	
551563	19.0	24	16	10	200
551564	22.0	24	16	10	200
551565	25.0	24	16	10	200
551566	28.5	30	16	10	200
551567	32.0	30	16	10	200

Spring Insert Fixed Glide – Polyamide

SR 6450

Steel/PA

- Swivel Glide with spring insert for a one piece application
- Lightweight polyamide base
- Available in Black or White



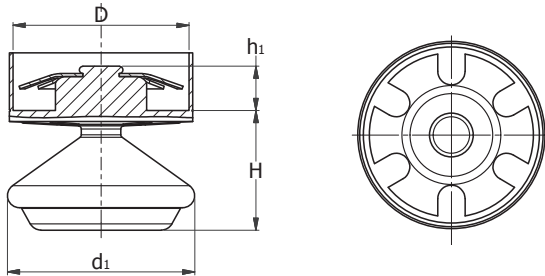
Part Number	Base Colour	Dimensions (mm)				Standard Pack Quantity
		D	d1	H	h1	
551600	White	22	23.4	13.5	10	200
551601	White	25	23.4	13.5	10	200
551602	Black	22	23.4	13.5	10	200
551603	Black	25	23.4	13.5	10	200

Push-On Tilt Glide

SR 6452

Steel

- With either Steel or Polyamide Base options
- Ball and socket joint for tilt action
- With fitted tube end cap for a clean finish
- Swivel Glide with spring insert for a one piece application



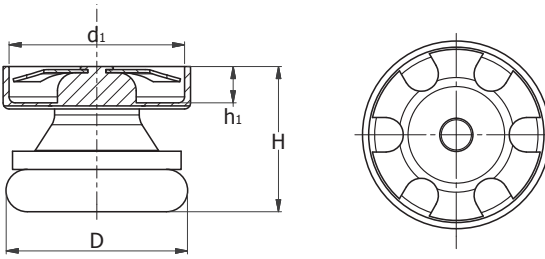
Part Number		Dimensions (mm)				Standard Pack Quantity
Steel Base	Polyamide Base	D	d1	H	h1	
551629	551624	16.0	31	18	15	200
551630	551625	19.0	31	18	13.5	200
551631	551626	22.0	31	18	12	200
551632	551627	25.0	31	18	12	200
551633	551628	28.5	31	18	12	200

Push-On Insert Glide

SR 6426

Steel

- With fitted tube end cap for a clean finish
- Swivel Glide with spring insert for a one piece application
- Steel Base



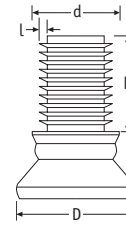
Part Number	Dimensions (mm)				Standard Pack Quantity
	D	d1	H	h1	
551578	28.5	24	16	8.5	200

Polyamide-Based Tiltserts

SR 1527

Black PA

- Articulating insert with polyamide base for most surfaces



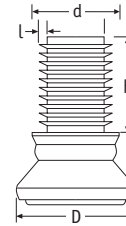
Part Number	Dimensions (mm)				Standard Pack Quantity
	D	d	h	l (gauge)	
463837	25.0	19.0	24.5	1.5 - 2.0	1250
463838	25.0	20.0	24.5	1.5 - 2.0	1250
463839	25.0	22.0	24.5	1.5 - 2.0	1000
463840	25.0	25.0	24.5	1.5 - 2.0	800
463841	25.0	28.0	24.5	1.5 - 2.0	800
463843	30.0	20.0	24.5	1.5 - 2.0	1000
463844	30.0	22.0	24.5	1.5 - 2.0	800

Felt-Based Tiltserts

SR 1528

Black PA with Felt Base

- Articulating insert with felt base ideal for wooden floors



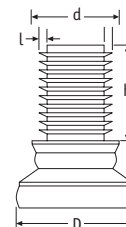
Part Number	Dimensions (mm)				Standard Pack Quantity
	D	d	h	l (gauge)	
463847	25.0	19.0	24.5	1.5 - 2.0	1500

Steel-Based Tiltserts

SR 1529

Black PA with Nickel-Plated Steel Base

- Articulating glide with steel base ideal for carpeted floors



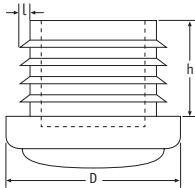
Part Number	Dimensions (mm)				Standard Pack Quantity
	D	d	h	l (gauge)	
463857	25.0	19.0	24.5	1.5 - 2.0	1250
463858	25.0	20.0	24.5	1.5 - 2.0	1250
463859	25.0	22.0	24.5	1.5 - 2.0	1000
463860	25.0	25.0	24.5	1.5 - 2.0	1000
463865	30.0	25.0	24.5	1.5 - 2.0	400

Felt Glides

SR 1587

PA with Felt Base

- Inserts with felt base to protect wooden floor surfaces



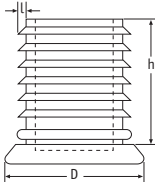
Part Number	Dimensions (mm)			Standard Pack Quantity
	D	l (gauge)	h	
463874	19.0	1.5 - 2.0	19.0	3500
463875	20.0	1.5 - 2.0	19.0	3500
463876	22.0	1.5 - 2.0	19.0	2500
463877	25.0	1.5 - 2.0	19.0	2250
463880	32.0	1.5 - 2.0	19.0	1250

Steel Glides

SR 1588

PA with Zinc-Plated Steel

- Steel-based inserts for smooth gliding action



Part Number	Dimensions (mm)			Standard Pack Quantity
	D	l (gauge)	h	
463871	30.0	1.0 - 2.5	19.0	900

QUESTIONS?
GIVE US A CALL

Our Customer Service advisors can also help you find the right product for your application.

Call 0845 758 5070
www.essentracomponents.co.uk



SADDLE & INSERT FEET

Saddle Feet

SR 5729

LDPE

- Ideal as feet or as furniture door buffers
- Easy to apply



Type 1



Type 2



Type 3



Type 4

Part Number	Type	Dimensions (mm)				Standard Pack Quantity
		Fits Tube Diameter	Length	Centre Fixing Pin	Pin Diameter	
499285	1	22.0	71.0	No	-	150
499286	1	32.0	75.0	No	-	100
499287	1	38.0	75.0	No	-	100
499288	1	25.0	72.5	No	-	100
499289	2	12.0	30.0	No	-	1000
499290	2	8.0	24.0	No	-	100
499291	2	10.0	30.0	No	-	100
499292	2	12.0	30.0	Yes	5.3	1000
499293	2	14.0	26.0	Yes	5.0	100
499294	2	18-20	28.5	Yes	5.7	1000
499295	2	20-22	29.0	Yes	5.7	1000
499296	2	22-25	43.5	Yes	5.7	1000
499297	2	28-30	43.0	Yes	5.7	200
499298	2	30-32	43.0	Yes	5.7	150
499299	2	32-35	42.5	Yes	5.7	150
499300	3	14-16	18.0	Yes	5.5	100
499301	3	16-18	19.0	Yes	5.5	100
499302	3	18-20	20.0	Yes	5.5	100
499303	3	20-22	22.0	Yes	5.5	100
499304	3	24-26	25.0	Yes	5.5	100
499305	3	24-26	25.0	Yes	7.5	100
499306	3	28-30	30.0	Yes	7.5	100
499307	4	14-16	18.0	No	-	1000
499308	4	16-18	19.0	No	-	1000
499309	4	18-20	20.0	No	-	1000
499310	4	20-22	22.0	No	-	1000
499311	4	24-26	25.0	No	-	1000
499312	4	28-30	30.0	No	-	1000
499314	4	16-18	19.0	Yes	3.5	1000
499315	4	18-20	20.0	Yes	3.5	1000
499316	4	20-22	22.0	Yes	4.0	1000
499317	4	24-26	25.0	Yes	4.0	1000
499318	4	24-26	25.0	Yes	5.0	1000
499319	4	28-30	30.0	Yes	5.5	1000

Round Base

SR 5734

PA



Type 5

Part Number	Type	Dimensions (mm)				Standard Pack Quantity
		Fits Tube Diameter	Base Diameter	Centre Fixing Pin	Pin Diameter	
499320	5	18-20	28.0	Yes	5.7	500
499321	5	20-22	28.5	Yes	5.7	1000
499322	5	23-24	33.5	Yes	5.7	500
499323	5	26-28	36.0	Yes	5.7	250

Double Saddle Feet

SR 1503

Black PA

- Used to connect adjacent tubes



Part Number	Dimensions (mm)		Standard Pack Quantity
	Fits Tube Diameter	Distance between Tube Centres	
466731	22	42	100
466732	25	42	100

Saddle Bases

SR 1503

Black LDPE

- Act as feet when fitted to bottom of tubes



Type 1



Type 2

Part Number	Type	Dimensions (mm)			Hole or Peg Diameter (mm)	Standard Pack Quantity
		Fits Tube Diameter	Length	Width		
SBFA2225-B	1	22-25	50	22	5.0	1000
SBFA25-45B	1	25	45	25	5.7	1000
SBFA2830-B	1	28-30	45	25	5.0	1000
466733	2	16-19	33	22	5.0	500
466734	2	22-25	35	25	5.0	500
466735	2	28-32	40	31	5.0	250

Metric Saddle Feet

SR 1503

Black LDPE

- Fit around metal tubes to act as a foot
- Ideal for protecting floor surfaces



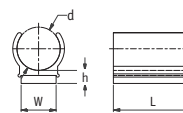
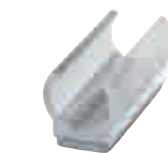
Part Number	Dimensions (mm)		Standard Pack Quantity
	Fits Tube Diameter	Peg Diameter	
461151	14-16	5.5	4000
461152	16-18	5.5	4000
461153	18-20	5.5	4000
465457	20-22	5.5	3000
465456	24-26	7.5	1500
465452	28-30	7.5	1500

Saddle Bases with Felt

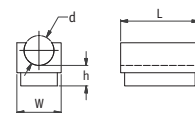
SR 6446

ABS & Felt

- Type 1 – Clear
- Type 2 – Black
- Fits around tubing
- Felt base glides smoothly



Type 1



Type 2

Part Number	Dimensions (mm)				Type	Standard Pack Quantity
	d	W	h	L		
551136	28.6	22	8.5	50	1	200
551137	22	18	9	50	1	200
551138	19	12	8.5	50	1	200
551139	16	11	8.5	50	1	200
551140	12.7	12	8.5	50	1	200
551141	13	14	7.5	30	2	200

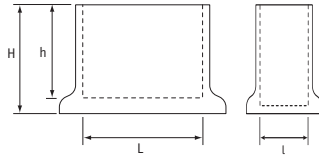
SADDLE & INSERT FEET

Angled and Flat Bar Feet

SR 1526

Black PE or PVC

- Ferrules to suit right-angled and flat bars
- Can be used as feet
- Ridge on edge of angled base provides extra stability
- Protect floor surfaces



Angle Bases - Black PE

Part Number	Dimensions (mm)				Standard Pack Quantity
	L	H	h	l	
465363	25 x 25	24	19	1-1.5	1000
HA300B	30 x 30	24	19	1-1.5	1000

Bar Bases - Black PVC

Part Number	Dimensions (mm)			Standard Pack Quantity
	L x L1	H	h	
465361	25 x 5	19	15	2500
465364	25 x 6	19	15	1250
465362	30 x 6	19	15	2500

Stand-Off Feet – External Fitting

SR 1503

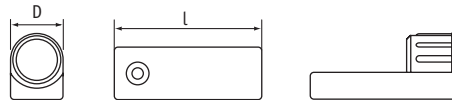
Black Polyethylene



Stand-Off Round Feet

SR 1559

Black LDPE



Part Number	Fits Tube Size (mm)	Standard Pack Quantity
HES190-BWPB	19.1 x 19.1	2000
199192	25.4 x 25.4	500
199219	38.1 x 19.1	1000
199040	50.8 x 25.4	500

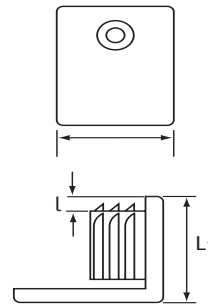
Part Number	Dimensions (mm)		Standard Pack Quantity
	D	l	
HIR200-20B	20	46.2	500
HIR320-15B*	30	51.5	500
HIR380-20B*	38	51.7	250

*Plain shank

Stand-Off Square Feet

SR 1559
Black LDPE

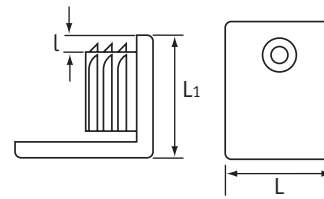
Part Number	Dimensions (mm)		Standard Pack Quantity
	L	l	
HIS200-RB	20	1.2	1000
HIS250-RB	25	1.2	1000
HIS300-RBKNP	30	1.2	1000



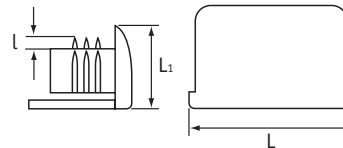
Stand-Off Rectangular Feet

SR 1559
Black LDPE

Part Number	Type	Dimensions (mm)		Standard Pack Quantity
		L x L1	l	
HIT300150-RB	1	30 x 15	1.2	1500
HIT400200-RB	1	40 x 20	1.2	1000
HIT500250-RB	1	50 x 25	1.2	500
HIT500300-RB	1	50 x 30	1.0-1.2	500
HITF400200-RB	2	40 x 20	1.2	500



Type 1



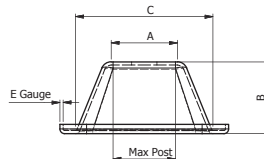
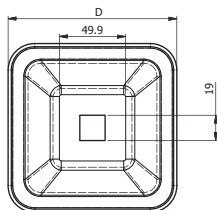
Type 2



Pallet Feet

SR 1507
Mild or Stainless Steel

- Maximum post sizes assume SHS tubing is used
- Ideal for metal pallets and stillages



Type 2: Stacking



Type 1

Part Number	Material	Type	Dimensions (mm)				Steel Gauge (mm)	Max. Post Size (mm)	Standard Pack Quantity	
			Top Width	Height	Hole	Internal Base Width				External Base Width
462833	Steel	1	54	54	19	102	127	2.4	60	1
1220378	Steel	1	60	50.5	19	102	127	2.4	60	1
1220379	Steel	1	54	54	19	102	127	3	60	1
1220380	Steel	1	70	57	19	127	165	3	80	1
1220381	Stainless	1	70	57	19	127	165	3	80	1
1220382	Steel	2	32	36	6.2	52	58	3	50	1