

Series SR/SRVO Snap Rivets



Patent No. 232519

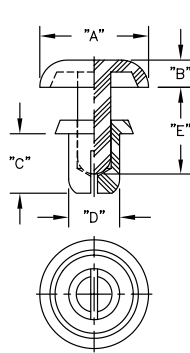


FIG. 1

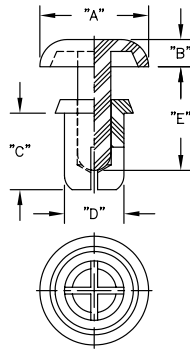


FIG. 2

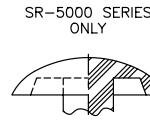
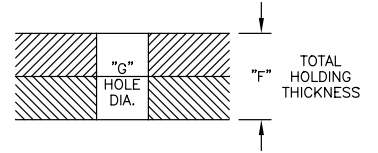


FIG. 3



Material: Nylon 6, see table for RMS#

Part No.				Standard Pack: 1000 per bag								Fig. No.					
White	Black	RMS No.	V-0, RMS-87 Black	"G" Hole Dia.	Extraction Force LBS (KG)	"F" Thickness	"A" ±.008 (0.2)	"B" ±.008 (0.2)	"C" ±.012 (0.3)	"D"	"E" ±.012 (0.3)						
SR-2024W	SR-2024B	28	—	.083 (2.1) - .087 (2.2)	6.6 Min. (3 Min.)	.024 (0.6) - .047 (1.2)	.165 (4.2)	.047 (1.2)	.09 (2.4)	.079 (2.0)	.11 (2.8)						
SR-2032W	SR-2032B					.051 (1.3) - .079 (2.0)			.13 (3.2)		.15 (3.8)						
SR-2040W	SR-2040B					.083 (2.1) - .110 (2.8)			.16 (4.0)		.18 (4.5)						
SR-2048W	SR-2048B					.114 (2.9) - .142 (3.6)			.19 (4.8)		.22 (5.5)						
SR-2064W	SR-2064B					.173 (4.4) - .197 (5.0)			.25 (6.4)		.28 (7.1)						
SR-2632W	SR-2632B	62	—	.102 (2.6) - .106 (2.7)	11.0 Min. (5 Min.)	.039 (1.0) - .079 (2.0)	.197 (5.0)	.055 (1.4)	.13 (3.2)	.102 (2.6)	.18 (4.5)						
SR-2642W	SR-2642B					.079 (2.0) - .118 (3.0)			.17 (4.2)		.24 (6.1)						
SR-2648W	SR-2648B					.106 (2.7) - .142 (3.6)			.19 (4.8)		.24 (6.1)						
SR-2655W	SR-2655B					.134 (3.4) - .169 (4.3)			.22 (5.5)		.24 (6.1)						
SR-3035W	SR-3035B					SRV0-3035			.039 (1.0) - .079 (2.0)		.14 (3.5)	.20 (5.1)					
SR-3045W	SR-3045B					SRV0-3045			.079 (2.0) - .118 (3.0)		.18 (4.5)	.24 (6.1)					
SR-3055W	SR-3055B					SRV0-3055			.118 (3.0) - .157 (4.0)		.22 (5.5)	.24 (6.1)					
SR-3065W	SR-3065B					SRV0-3065			.157 (4.0) - .197 (5.0)		.26 (6.5)	.28 (7.1)					
SR-3075W	SR-3075B					SRV0-3075			.197 (5.0) - .236 (6.0)		.30 (7.5)	.35 (9.0)					
SR-3080W	SR-3080B					SRV0-3080			.217 (5.5) - .256 (6.5)		.31 (8.0)	.43 (11.0)					
SR-3090W	SR-3090B	SRV0-3090	.256 (6.5) - .295 (7.5)	.35 (9.0)													
SR-3100W	SR-3100B	SRV0-3100	.295 (7.5) - .335 (8.5)	.39 (10.0)													
SR-3535W	SR-3535B	28	SRV0-3535	.142 (3.6) - .146 (3.7)	26.4 Min. (12 Min.)	.047 (1.2) - .083 (2.1)	.252 (6.4)	.063 (1.6)	.14 (3.5)	.138 (3.5)	.20 (5.1)						
SR-3545W	SR-3545B	62	SRV0-3545			.083 (2.1) - .118 (3.0)			.18 (4.5)		.24 (6.1)						
SR-3550W	SR-3550B	SRV0-3550	.106 (2.7) - .142 (3.6)			.20 (5.0)			.24 (6.1)								
SR-3555W	SR-3555B	SRV0-3555	.118 (3.0) - .157 (4.0)			.22 (5.5)			.28 (7.1)								
SR-3560W	SR-3560B	28	SRV0-3560			.146 (3.7) - .181 (4.6)			.24 (6.0)		.35 (9.0)						
SR-3570W	SR-3570B	62	SRV0-3570			.177 (4.5) - .217 (5.5)			.28 (7.0)		.36 (9.1)						
SR-3580W	SR-3580B	28	SRV0-3580			.217 (5.5) - .256 (6.5)			.31 (8.0)								
SR-4050W	SR-4050B	62	SRV0-4050			.161 (4.1) - .165 (4.2)			44.0 Min. (20 Min.)		.098 (2.5) - .138 (3.5)	.315 (8.0)	.071 (1.8)	.20 (5.0)	.157 (4.0)	.28 (7.1)	
SR-4060W	SR-4060B		SRV0-4060								.138 (3.5) - .177 (4.5)			.24 (6.0)		.35 (9.0)	
SR-4070W	SR-4070B		SRV0-4070								.177 (4.5) - .217 (5.5)			.28 (7.0)		.43 (11.0)	
SR-4080W	SR-4080B		SRV0-4080	.217 (5.5) - .256 (6.5)	.31 (8.0)												
SR-4090W	SR-4090B		SRV0-4090	.256 (6.5) - .295 (7.5)	.35 (9.0)												
SR-4100W	SR-4100B	SRV0-4100	.295 (7.5) - .335 (8.5)	.39 (10.0)													
SR-5045W	SR-5045B	28	SRV0-5045	.201 (5.1) - .205 (5.2)	55.0 Min. (25 Min.)	.059 (1.5) - .098 (2.5)	.354 (9.0) See Fig. 3	.087 (2.2)	.18 (4.5)	.197 (5.0)	.26 (6.5)						
SR-5055W	SR-5055B		SRV0-5055			.098 (2.5) - .138 (3.5)			.22 (5.5)		.33 (8.5)						
SR-5065W	SR-5065B		SRV0-5065			.138 (3.5) - .177 (4.5)			.26 (6.5)		.41 (10.5)						
SR-5075W	SR-5075B		SRV0-5075			.177 (4.5) - .217 (5.5)			.30 (7.5)		.47 (12.0)						
SR-5085W	SR-5085B		SRV0-5085			.217 (5.5) - .256 (6.5)			.33 (8.5)								
SR-5095W	SR-5095B		SRV0-5095			.256 (6.5) - .295 (7.5)			.37 (9.5)								
SR-5105W	SR-5105B		SRV0-5105			.295 (7.5) - .335 (8.5)			.41 (10.5)								
SR-6060W	SR-6060B		62			—			.240 (6.1) - .244 (6.2)		66.0 Min. (30 Min.)	.098 (2.5) - .157 (4.0)	.472 (12.0)	.098 (2.5)	.24 (6.0)	.236 (6.0)	.35 (9.0)
SR-6080W	SR-6080B											SRV0-6080			.138 (3.5) - .217 (5.5)		.31 (8.0)

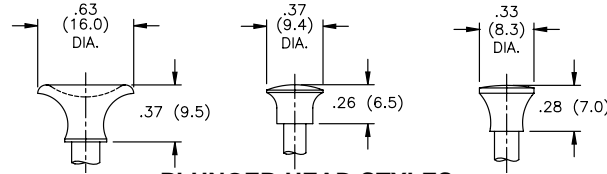
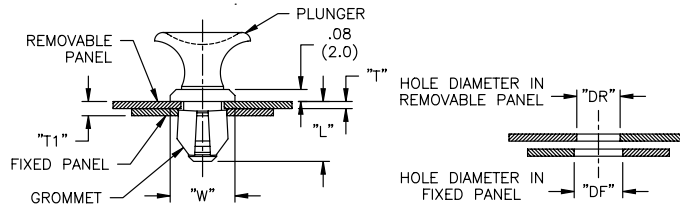
Color: Other colors available by special order- Replace "W" or "B" with Green (GN), Yellow (YL), Red (RD) and Blue (BL)

RIVETS, BUMPERS & FEET

SLPL/SLPB/SLG Series Snap Latch



LATCHED POSITION



PLUNGER HEAD STYLES

SLPL-1L/SLPL-2L

SLPB-1L

SLPB-2M/SLPB-3M

NOTE:
Plunger and Mating Grommet sold separately

Part No.				Standard Pack: 1000 per bag					
Plunger		Mating Grommet		Removable Panel Thickness "T" (Max.)	Total Panel Thickness Range "T1"	Removable Panel Hole Dia. Range "DR"	Fixed Panel Hole Dia. Range "DF"	"L" Ref."	"W" ±.010 (0.25)
Black	White	Black	White						
SLPL-1L-B	SLPL-1L-W	SLG-1L-B	SLG-1L-W	.062 (1.57)	.079 (2.0) - .165 (4.2)	.295 (7.5) - .303 (7.7)	.315 (8.0) - .323 (8.2)	.354 (9.0)	.425 (10.8)
SLPB-1L-B	SLPB-1L-W	SLG-1L-B	SLG-1L-W						
SLPL-2L-B	SLPL-2L-W	SLG-2L-B	SLG-2L-W						
SLPB-2M-B	SLPB-2M-W	SLG-2M-B	SLG-2M-W	.062 (1.57)	.079 (2.0) - .165 (4.2)	.234 (5.95) - .240 (6.1)	.250 (6.35) - .256 (6.5)	.334 (8.5)	.334 (8.5)
SLPB-3M-B	SLPB-3M-W	SLG-3M-B	SLG-3M-W						

SRT Series Snap Rivet, T-Type



Features

- Push/pull knob lets rivet snap in and out up to 25 times

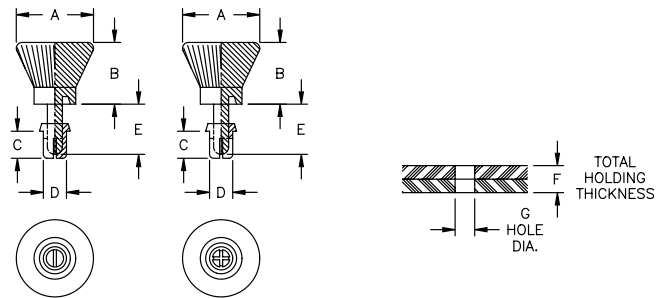


FIG. 1

FIG. 2

Material: Nylon 6, RMS-28 or RMS-62 (see table) • Color: Black									
Standard Pack: 1000 per bag									
Part No.	Hole Dia. "G"	Thickness "F"	"A"	"B"	"C"	"D"	"E"	Fig No.	RMS
SRT-3035B	.122 (3.1) - .126 (3.2)	.039 (1.0) - 0.079 (2.0)	.394 (10.0)	.315 (8.0)	.14 (3.6)	.118 (3.0)	.26 (6.6)	1	62
SRT-3045B		.079 (2.0) - 0.118 (3.0)			.18 (4.6)				
SRT-3055B		.118 (3.0) - 0.157 (4.0)			.22 (5.6)				
SRT-3065B		.157 (4.0) - 0.197 (5.0)			.26 (6.6)				
SRT-3080B		.217 (5.5) - 0.256 (6.5)			.32 (8.1)				
SRT-3545B	.142 (3.6) - .146 (3.7)	.079 (2.0) - 0.118 (3.0)	.315 (8.0)	.315 (8.0)	.18 (4.6)	.139 (3.5)	.26 (6.6)	2	62
SRT-3555B		.118 (3.0) - 0.146 (3.7)			.22 (5.6)				
SRT-3570B		.150 (3.8) - 0.205 (5.2)			.28 (7.1)				
SRT-4050B	.161 (4.1) - .165 (4.2)	.098 (2.5) - 0.138 (3.5)	.472 (12.0)	.315 (8.0)	.20 (5.1)	.157 (4.0)	.30 (7.6)	2	62
SRT-4060B		.138 (3.5) - 0.177 (4.5)			.24 (6.1)				
SRT-4070B		.177 (4.5) - 0.216 (5.5)			.28 (7.1)				
SRT-4080B		.216 (5.5) - 0.256 (6.5)			.32 (8.1)				
SRT-4100B		.295 (7.5) - 0.335 (8.5)			.39 (9.9)				

Part available in white by special order. To order, replace "B" with "W".