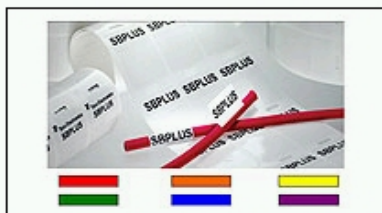


SBP100375WE2.5 Product Details

[Share](#) [Print](#) [Email](#)


SBP100375WE2.5

TE Internal Number: CN9926-000

[Active](#)

Label ID Products

[Always EU RoHS/ELV Compliant \(Statement of Compliance\)](#)

Product Highlights:

- Printer Type = Thermal Transfer
- Label Height = 95.30 mm
- Label Width = 25.40 mm
- Translucent Vinyl Material
- SBP Series

[View all Features](#)

Quick Links

- ▶ [Check Pricing & Availability](#)
- ▶ [Search for Tooling](#)
- ▶ [Product Feature Selector](#)
- ▶ [Contact Us About This Product](#)

[Add to My Part List](#) [Request Sample](#) [Find Similar Products](#) [Buy Product](#)

Documentation & Additional Information

Product Drawings:

- None Available

Catalog Pages/Data Sheets:

- None Available

Product Specifications:

- None Available

Application Specifications:

- None Available

Instruction Sheets:

- None Available

CAD Files:

- None Available

Additional Information:

- [Product Line Information](#)

Related Products:

- [Tooling](#)

[List all Documents](#)

Product Features (Please use the Product Drawing for all design activity)

Product Type Features:

- [Material](#) = Translucent Vinyl
- [Series](#) = SBP
- [Color](#) = Clear (White Printable Area)

Electrical Characteristics:

- [Printer Type](#) = Thermal Transfer
- [Number of Labels Across](#) = 3
- [Web Width \(mm \[in\]\)](#) = 87.30 [3.436]

Body Features:

- [Horizontal Repeat \(mm \[in\]\)](#) = 27.9 [1.1]
- [Recommended Printer](#) = TE 3000 Series, T200
- [Recommended Ribbon](#) = TMS-RJS-RIBBON-4RPSCE

Industry Standards:

- [RoHS/ELV Compliance](#) = RoHS compliant, ELV compliant
- [Lead Free Solder Processes](#) = Not relevant for lead free process
- [RoHS/ELV Compliance History](#) = Always was RoHS compliant

Printer/Label Features:

- [Label Height \(mm \[in\]\)](#) = 95.30 [3.750]
- [Label Width \(mm \[in\]\)](#) = 25.40 [1.000]
- [Label Finish](#) = Gloss/Matte
- [Tamper Evident](#) = No
- [Label Type](#) = Die-Cut
- [Adhesive Type](#) = Permanent Acrylic
- [Vertical Repeat \(mm \[in\]\)](#) = 101.60 [4.000]
- [Printable Height \(mm \[in\]\)](#) = 25.40 [1.000]

Environmental:

- [Operating Temperature \(°C \[°F\]\)](#) = -51 - +93 [-60 - +200]

Conditions for Usage:

- [Energy Product](#) = No

Packaging Features:

- [Packaging Quantity](#) = 2,500

Other:

- [Brand](#) = Raychem

Corporate Information

[Who We Are](#)
[Investors](#)
[News Room](#)
[Supplier Portal](#)
[Careers](#)

Quick Links

[Check Distributor Inventory](#)
[Cross Reference](#)
[Find Documents & Drawings](#)
[Product Compliance Support Center](#)
[Site Map](#)

Customer Support

[Email or Chat With Us](#)
[Find a Phone Number](#)
[Search Knowledge Base](#)
[Manage your Account](#)

Keep Me Informed

Receive TE News, Events & Technology Updates

Enter your email address

