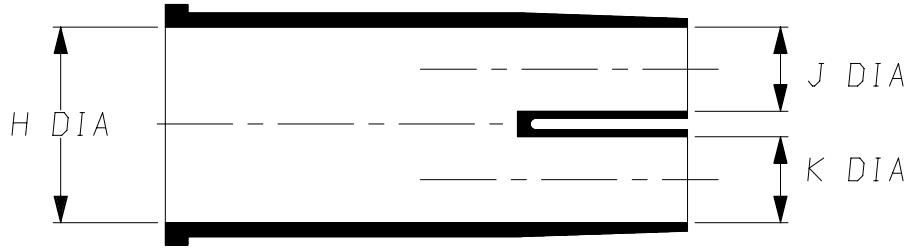
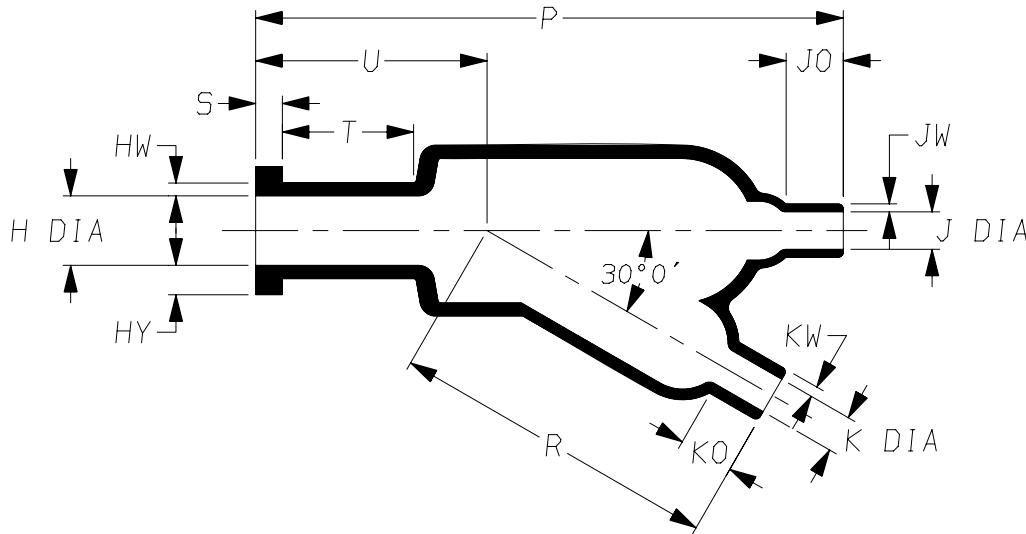


a) Part as supplied.

362W214



b) Part after unrestricted recovery.



DIMENSIONS in millimetres
(in inches, for reference)

| | H | | J | | K | | P | R | S | T | U | HY | HW | JO | JW | K0 | KW |
|---------|--------|--------|--------|--------|--------|--------|--------|--------|--------|--------|--------|--------|--------|--------|--------|--------|--------|
| Part | MIN | MAX | MIN | MAX | MIN | MAX | ±10% | ±10% | ±10% | ±10% | ±10% | ±10% | ±20% | ±20% | ±20% | ±20% | ±20% |
| Number | a | b | a | b | a | b | b | b | b | b | b | b | b | b | b | b | b |
| 362W214 | 40 | 13.7 | 24 | 7.4 | 24 | 7.4 | 110 | 62 | 5.0 | 25 | 43 | 5.5 | 2.5 | 11 | 2.0 | 11 | 2.0 |
| | {1.57} | {0.54} | {0.94} | {0.29} | {0.94} | {0.29} | {4.33} | {2.44} | {0.20} | {0.98} | {1.69} | {0.22} | {0.10} | {0.43} | {0.08} | {0.43} | {0.08} |

SUPERSEDED

Copyright (!)

The copyright in this drawing is the property of Tyco Electronics UK Ltd. The drawing is issued on the condition that it is not copied, reproduced or disclosed to a third party, either in whole or in part without the prior written consent of Tyco Electronics UK Ltd.

Drawn A.LILLEY. Checked

Issue 2

Date May 2008

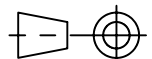
Conforms to ISO Recommendations

Approval
Design

MKTG.

Tech.

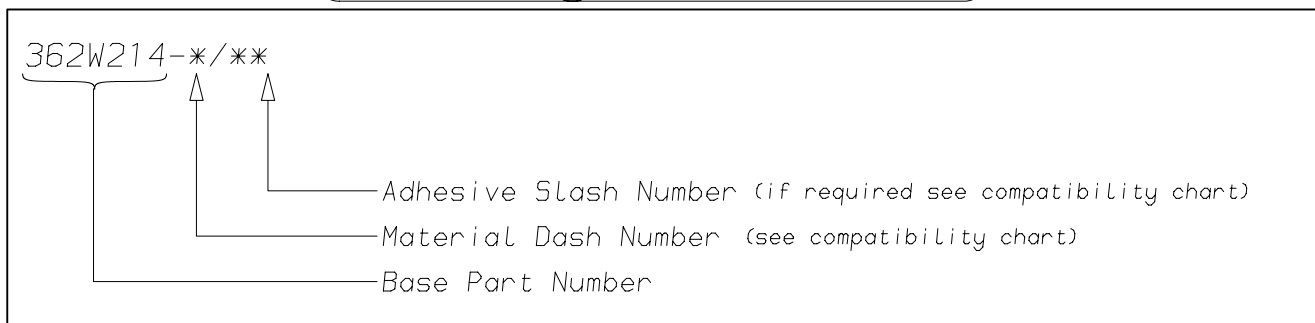
3rd Angle Projection
Not to Scale



NOT the LATEST REVISION

| | | | |
|----------------|----------|--|--|
| Raychem | | Specification Control Drawing | Part Number 362W214 Issue 2 |
| Iss. | Date | E.C.R. No. | Details of Change |
| 2 | May 2008 | CR08-HM-011 | Jo & Ko toll was 10%, JW was 1.5, KO was 9 |

(Ordering Information)



(COMPATIBILITY CHART)

| Material Dash Number | Material Description | SPEC Number | Coating Slash Number |
|----------------------|---------------------------------|-------------|----------------------|
| -3 | POLYOLEFIN, SEMI-RIGID | RT-301 | /42, /86, /180 |
| -4 | POLYOLEFIN, FLEXIBLE | RT-1304 | /42, /86, /180 |
| -25 | ELASTOMER, FLUID RESISTANT | RW-2070 | /42, /86, /225 |
| -130 | POLYOLEFIN, COMMERCIAL FLEXIBLE | RW-2008 | /42 |
| | | | |
| | | | |
| | | | |

NOTES

- ① As supplied dimensions are for uncoated parts, when coating is added entry diameters will reduce by 1.5mm Max.

| | |
|--|---|
| Tyco Electronics UK Ltd. Faraday Road, Swindon, Wiltshire, SN3 5HH England Telephone: (01793) 528171 Fax: 572516 | Tyco Electronics Corporation 300, Constitution Drive, Menlo Park, CA 94025 USA Telephone (650) 361-3860 Fax: (650) 361-5579 |
| Cage Code K1010 | Cage Code 06090 |