

2

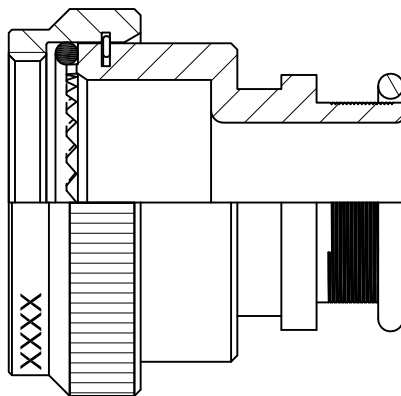


1

TE CONNECTIVITY RESERVES THE RIGHT TO AMEND THIS DRAWING AT ANY TIME. USERS SHOULD EVALUATE THE SUITABILITY OF THE PRODUCT FOR THEIR APPLICATION.

## REVISIONS

LTR	DESCRIPTION	DATE	APPROVED
H	REVISED PER ECO-12-021161	04DEC12	G.WELLS
J	REVISED PER ECO-15-002319	16FEB15	H.SMITH




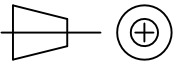
### CODE 41 TINEL-LOCK ADAPTER

## NOTES:

1. THIS PRODUCT IS DESIGNED TO TERMINATE A BRAIDED CABLE SHIELD AND A HEAT SHRINKABLE LIPPED BOOT TO A CONNECTOR.
2. SEE CH00-0250-008 FOR ORDERING INFORMATION, MODIFICATIONS AND ADDITIONAL DIMENSIONS.
- ③ SEE DRAWING "TR" FOR DETAILS ON TINEL-LOCK RING. RINGS ARE DESIGNED TO BE HEATED ELECTRICALLY. ALL RINGS ARE MARKED WITH THERMOCHROMIC PAINT WHICH CHANGES COLOR WHEN INSTALLATION TEMPERATURE IS REACHED.
4. ADAPTER TO BE PERMANENTLY MARKED WITH CODE IDENT. NO. AND PART NO. LESS RING DESIGNATOR (E.G.: 06090-TXR41AB00-1206). RINGS SHALL BEAR NO MARKING.
- ⑤ FOR LARGER ENTRY SIZES, A 2 PIECE ADAPTER (TYPE II) IS SUPPLIED.
- ⑥ ADAPTER MATES TO MIL-C-38999, SERIES I & II, CLASS E AND T, MS27466, MS27467, MS27468, MS27472, MS27473, MS27474, MS27479, MS27480, MS27481, MS27484, MS27497, MS27652, MS27653, MS27656 CONNECTORS.
- ⑦ THESE DIMENSIONS APPLY IF A SELF-LOCKING COUPLING NUT IS USED. (MOD. CODE "S").
- ⑧ THESE DIMENSIONS APPLY IF AN ADAPTER MATERIAL IS STAINLESS STEEL.

©2015 Tyco Electronics Corporation, a TE connectivity Ltd. company. All rights reserved.

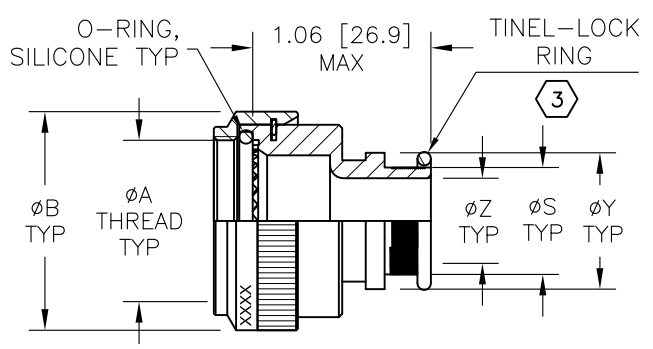
Raychem Adapters  
CUSTOMER DRAWING

UNLESS OTHERWISE SPECIFIED DIMENSIONS ARE IN INCHES. METRIC DIMENSIONS ARE IN BRACKETS.  DECIMALS .XXX ± 0.005 [ 0.13 mm] .XX ± 0.01 [ 0.25 mm] .X ± 0.1 [ 0.50 mm]  ANGLES .X ± 0.5 DEG	DRAWN	R. RAMIREZ	18-03-93	 TE Connectivity	
	CHECKED	---	---		
	APPROVED	W.C. GAY	19-05-93	TITLE	
	REVISED	N. NAGAR	16-02-15	TINEL-LOCK™ ADAPTER	
	CAD NAME: txr41_1_j_cd			SIZE	CODE IDENT. NO.
THIRD ANGLE PROJECTION			A	06090	TXR41
DO NOT SCALE THIS DRAWING					SHEET 1 OF 3

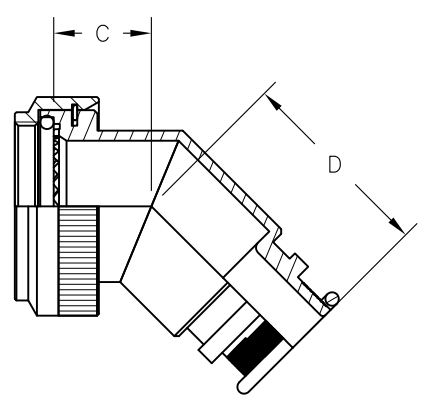
2



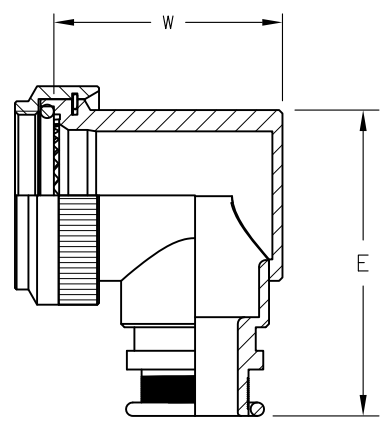
1



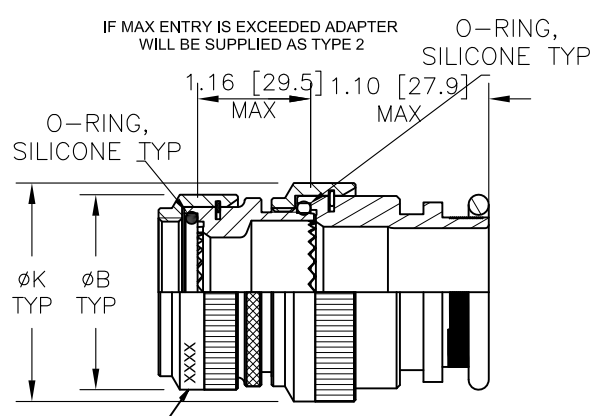
STRAIGHT ADAPTER-TYPE I



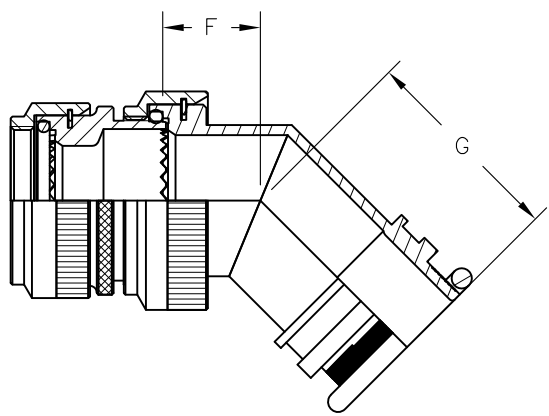
45° ADAPTER-TYPE I



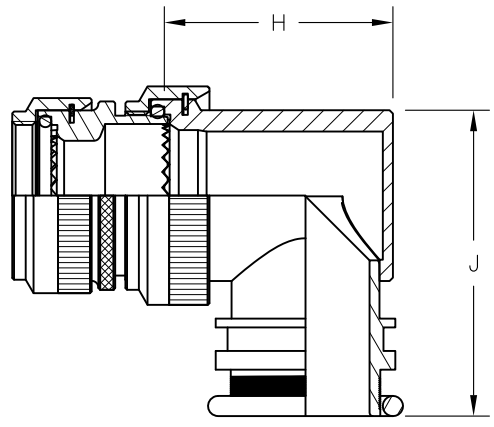
90° ADAPTER  
TYPE I



STRAIGHT ADAPTER-TYPE II



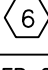


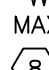
45° ADAPTER-TYPE II




90° ADAPTER  
TYPE II

Raychem Adapters  
CUSTOMER DRAWING

SIZE A	CODE IDENT. NO. 06090	DWG. NO. TXR41	REV J
DO NOT SCALE THIS DRAWING [CAD NAME: tr41_2_j_cd]			SHEET 2 OF 3

ORDER NO.	SHELL SIZE 		MAX ENTRY SIZE  TYPE I	A UNIFIED THD CLASS 2B	B DIA MAX	B DIA MAX 	C MAX	D MAX	E MAX	W MAX	W MAX 
	SER 1	SER 2									
08	9	8	04	.438-28 UNEF	.750 [19.10]	.969 [24.6]	.69 [17.5]	1.075 [27.3]	1.15 [29.2]	.85 [21.6]	.85 [21.8]
10	11	10	06	.562-24 UNEF	.850 [21.60]	1.063 [27.0]	.72 [18.3]	1.102 [28.0]	1.21 [30.7]	.97 [24.6]	.98 [24.9]
12	13	12	08	.688-24 UNEF	.965 [24.50]	1.219 [31.0]	.74 [18.8]	1.122 [28.5]	1.28 [32.5]	1.10 [27.9]	1.13 [28.9]
14	15	14	10	.812-20 UNEF	1.142 [29.00]	1.406 [35.7]	.76 [19.3]	1.161 [29.5]	1.34 [34.0]	1.24 [31.5]	1.25 [31.7]
16	17	16	12	.938-20 UNEF	1.250 [31.80]	1.469 [37.3]	.79 [20.1]	1.189 [30.2]	1.40 [35.6]	1.36 [34.5]	1.37 [34.8]
18	19	18	12	1.062-18 UNEF	1.400 [35.60]	1.594 [40.5]	.81 [20.6]	1.220 [31.0]	1.46 [37.1]	1.41 [35.8]	1.53 [39.1]
20	21	20	14	1.188-18 UNEF	1.500 [38.10]	1.750 [44.5]	.84 [21.3]	1.236 [31.4]	1.53 [38.9]	1.53 [38.9]	1.62 [41.3]
22	23	22	16	1.312-18 UNEF	1.650 [41.90]	1.844 [46.8]	.87 [22.1]	1.244 [31.6]	1.59 [40.4]	1.67 [42.5]	1.74 [44.3]
24	25	24	18	1.438-18 UNEF	1.750 [44.45]	2.031 [51.6]	.89 [22.6]	1.283 [32.6]	1.65 [41.9]	1.79 [45.5]	1.85 [47.0]

ENTRY SIZE	Z +.010 -.020	S DIA	Y ±.015 [±0.38]	F MAX	G MAX	H MAX	J MAX	K MAX	K MAX 
04	.250 [6.35]	.376 [9.56] .370 [9.39]	.550 [13.97]	N/A	N/A	N/A	N/A	N/A	N/A
05	.312 [7.92]	.438 [11.13] .432 [10.97]	.612 [15.54]	.77 [19.6]	1.10 [28.0]	1.19 [30.2]	1.16 [29.5]	.83 [21.0]	.97 [24.6]
06	.375 [9.52]	.501 [12.73] .495 [12.57]	.675 [17.14]	.77 [19.6]	1.10 [28.0]	1.19 [30.2]	1.16 [29.5]	.83 [21.0]	.97 [24.6]
07	.437 [11.09]	.563 [14.31] .556 [14.12]	.737 [18.71]	.80 [20.3]	1.10 [28.0]	1.38 [35.1]	1.22 [31.0]	.92 [23.4]	.97 [24.6]
08	.500 [12.70]	.626 [15.91] .619 [15.72]	.800 [20.32]	.80 [20.3]	1.12 [28.5]	1.38 [35.1]	1.22 [31.0]	.96 [24.5]	1.11 [28.3]
10	.625 [15.87]	.752 [19.11] .742 [18.84]	.925 [23.49]	.84 [21.3]	1.16 [29.5]	1.51 [38.4]	1.35 [34.3]	1.18 [30.0]	1.28 [32.4]
12	.750 [19.05]	.877 [22.28] .867 [22.02]	1.050 [26.67]	.88 [22.4]	1.19 [30.2]	1.63 [41.4]	1.40 [35.6]	1.35 [34.3]	1.40 [35.6]
14	.875 [22.23]	1.002 [25.46] .991 [25.17]	1.175 [29.84]	.88 [22.4]	1.22 [31.0]	1.78 [45.2]	1.46 [37.1]	1.41 [35.8]	1.51 [38.5]
16	1.000 [25.40]	1.127 [28.63] 1.116 [28.34]	1.300 [33.02]	.93 [23.6]	1.24 [31.4]	1.88 [47.8]	1.53 [38.9]	1.60 [40.6]	1.64 [41.7]
18	1.125 [28.57]	1.252 [31.81] 1.241 [31.52]	1.425 [36.19]	.93 [23.6]	1.25 [31.6]	2.01 [51.1]	1.59 [40.4]	1.66 [42.2]	1.73 [43.9]
20	1.250 [31.75]	1.377 [34.98] 1.366 [34.69]	1.550 [39.37]	.98 [24.9]	1.28 [32.6]	2.13 [54.1]	1.78 [45.2]	2.04 [51.8]	2.04 [51.8]
22	1.375 [34.93]	1.502 [38.15] 1.488 [37.79]	1.675 [42.55]	1.03 [26.2]	1.41 [35.8]	2.29 [58.2]	1.85 [47.0]	2.23 [56.6]	2.23 [56.6]
24	1.500 [38.10]	1.627 [41.33] 1.613 [40.97]	1.800 [45.72]	1.08 [27.4]	1.52 [38.6]	2.42 [61.5]	1.92 [48.8]	2.23 [56.6]	2.23 [56.6]

Raychem Adapters  
CUSTOMER DRAWING

SIZE A	CODE IDENT. NO. 06090	DWG. NO. TXR41	REV J
DO NOT SCALE THIS DRAWING CAD NAME: tr41_3_j_cd			SHEET 3 OF 3