



RAF ELECTRONIC  
HARDWARE

a Division of MW Industries, Inc.



[ABOUT US](#) [WHAT'S NEW](#) [CONTACT US](#) [SERVICES](#) [QUALITY](#) [SITE MAP](#)

- [HOME](#)
- [PRODUCTS](#)
- [ONLINE CATALOG](#)
- [REQUEST QUOTE](#)
- [ORDER ONLINE](#)
- [CHECK STOCK](#)
- [REQUEST PRINT CATALOG](#)
- [REQUEST SAMPLES](#)
- [ENGINEERING DATA](#)
- [DISTRIBUTORS](#)
- [CAPABILITIES BROCHURE](#)

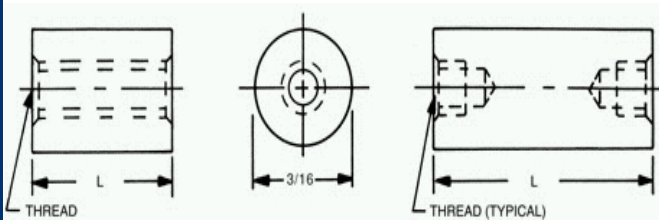
**CALL NOW:  
203 888-2133**



**NEFDA**  
New England Fastener  
Distributor Association



## 3/16 Round Female Standoffs



Select	Part No.	Length	Select	Part No.	Length	Select	Part No.	Length	Select	Code	Thread
<input type="radio"/>	1631A	3/32	<input type="radio"/>	1641	3/4	<input type="radio"/>	1658	1-13/16	<input type="radio"/>	256	2-56
<input type="radio"/>	1631	1/8	<input type="radio"/>	1641T	25/32	<input type="radio"/>	1659	1-7/8	<input type="radio"/>	440	4-40
<input type="radio"/>	1631T	5/32	<input type="radio"/>	1642	13/16	<input type="radio"/>	1660	1-15/16			
<input type="radio"/>	1632	3/16	<input type="radio"/>	1642T	27/32	<input type="radio"/>	1661	2"			
<input type="radio"/>	1632T	7/32	<input type="radio"/>	1643	7/8	<input type="radio"/>	1662	2-1/16			
<input type="radio"/>	1633	1/4	<input type="radio"/>	1643T	29/32	<input type="radio"/>	1663	2-1/8			
<input type="radio"/>	1633T	9/32	<input type="radio"/>	1644	15/16	<input type="radio"/>	1664	2-3/16			
<input type="radio"/>	1634	5/16	<input type="radio"/>	1644T	31/32	<input type="radio"/>	1665	2-1/4			
<input type="radio"/>	1634T	11/32	<input type="radio"/>	1645	1"	<input type="radio"/>	1666	2-5/16			
<input type="radio"/>	1635	3/8	<input type="radio"/>	1646	1-1/16	<input type="radio"/>	1667	2-3/8			
<input type="radio"/>	1635T	13/32	<input type="radio"/>	1647	1-1/8	<input type="radio"/>	1668	2-7/16			
<input type="radio"/>	1636	7/16	<input type="radio"/>	1648	1-3/16	<input type="radio"/>	1669	2-1/2			
<input type="radio"/>	1636T	15/32	<input type="radio"/>	1649	1-1/4	<input type="radio"/>	1670	2-9/16			
<input type="radio"/>	1637	1/2	<input type="radio"/>	1650	1-5/16	<input type="radio"/>	1671	2-5/8			
<input type="radio"/>	1637T	17/32	<input type="radio"/>	1651	1-3/8	<input type="radio"/>	1672	2-11/16			
<input type="radio"/>	1638	9/16	<input type="radio"/>	1652	1-7/16	<input type="radio"/>	1673	2-3/4			
<input type="radio"/>	1638T	19/32	<input type="radio"/>	1653	1-1/2	<input type="radio"/>	1674	2-13/16			
<input type="radio"/>	1639	5/8	<input type="radio"/>	1654	1-9/16	<input type="radio"/>	1675	2-7/8			
<input type="radio"/>	1639T	21/32	<input type="radio"/>	1655	1-5/8	<input type="radio"/>	1676	2-15/16			
<input type="radio"/>	1640	11/16	<input type="radio"/>	1656	1-11/16	<input type="radio"/>	1677	3"			
<input type="radio"/>	1640T	23/32	<input type="radio"/>	1657	1-3/4						

[Home](#) [Previous](#) [Next](#)  
[Related Me](#)

Ordering Code			
xxxx	xxx	x	x
	Thread		Finis
Length		Material	

**PART: ????-???-??**

Red ?'s show missing selections. [H](#)

[Thread depth information](#)

Select	Code	Material	RoHS
<input type="radio"/>	AL	Aluminum	YES
<input type="radio"/>	B	Brass	YES
<input type="radio"/>	SS	Stainless Steel	YES
<input type="radio"/>	S	Steel	YES
<input type="radio"/>	N	Nylon	YES
<input type="radio"/>	PH	Phenolic	YES

[Material Specifications](#)

**SELECT FINISH:**

select a material first

\* Finishes ending with an asterisk are [not](#) RoHS Compliant

[Ordering non-standard items](#)

[HOME](#) | [PRODUCTS](#) | [ONLINE CATALOG](#) | [REQUEST QUOTE](#) | [ORDER ONLINE](#) | [CHECK STOCK](#) | [CONTACT US](#) | [SITE MAP](#)

© RAF Electronic Hardware, a Division of MW Industries | 95 Silvermine Rd., Seymour CT 06483 | Tel 203-888-2133 | Fax 203-888-9860