



MW Industries, Inc.

- Home

- Products

- Online Catalog

- Request Quote

- Order Online

- Check Stock

- Request Print Catalog

- Request Samples

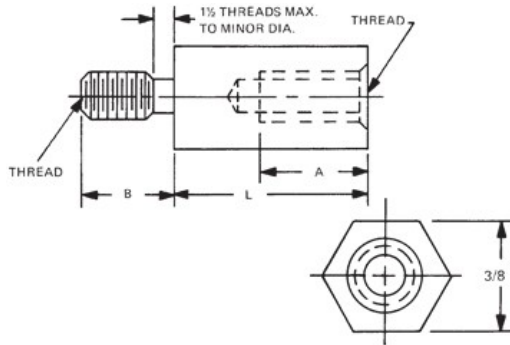
- Engineering Data

- Distributors

- Capabilities Brochure

Home > 3/8 Hex Male-Female Standoffs

3/8 HEX MALE-FEMALE STANDOFFS



[Home](#) [Previous](#) [Next](#)
[Related Metric](#)

Ordering Code			
xxxxx	xxxx	xx	x
Length	Thread	Material	Finish

PART: 4640 832 SS

Red ?'s show missing selections. [Help](#)

[Material Specifications](#)
[Ordering non-standard items](#)
[Request a Drawing](#)

Add to Cart

Thread Length Code		
Thread	A	B
4-40	1/4	3/16
6-32	3/8	1/4
8-32	7/16	3/8
10-32	1/2	3/8
12-24	1/2	3/8

Qty1 *

Qty2

Qty3

- 4631T 31/32
- 4632 1"
- 4633 1-1/16
- 4634 1-1/8
- 4635 1-3/16
- 4636 1-1/4
- 4637 1-5/16
- 4638 1-3/8
- 4639 1-7/16
- 4640 1-1/2
- 4641 1-9/16
- 4642 1-5/8
- 4643 1-11/16

Thread *

Select	Code	Thread
<input type="radio"/>	1224	12-24
<input type="radio"/>	440	4-40
<input type="radio"/>	632	6-32
<input checked="" type="radio"/>	832	8-32
<input type="radio"/>	1032	10-32

Material *

Select	Code	Material	RoHS
<input type="radio"/>	AL	Aluminum	YES
<input type="radio"/>	B	Brass	YES
<input checked="" type="radio"/>	SS	Stainless Steel	YES
<input type="radio"/>	S	Steel	YES
<input type="radio"/>	N	Nylon	YES



Finish *

<input checked="" type="radio"/>	Plain Finish
<input type="radio"/>	1-Cad clear chromate/commercial*
<input type="radio"/>	2-Cad clear chromate*
<input type="radio"/>	3-Cad yellow chromate*
<input type="radio"/>	4-Chrome over nickel
<input type="radio"/>	5-Nickel
<input type="radio"/>	6-Gold iridite
<input type="radio"/>	7-Clear iridite
<input type="radio"/>	9-Alodine 1200*
<input type="radio"/>	10-Bright chrome
<input type="radio"/>	11-Satin chrome
<input type="radio"/>	12-Zinc