

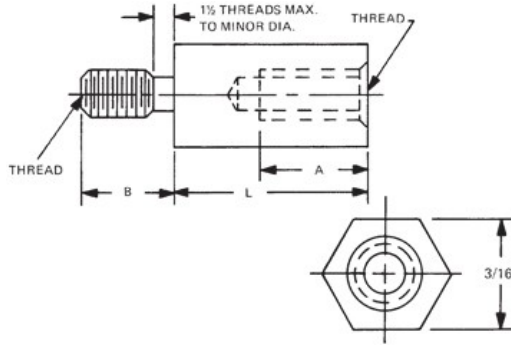


MW Industries, Inc.

- Home
- Products
- Online Catalog
- Request Quote
- Order Online
- Check Stock
- Request Print Catalog
- Request Samples
- Engineering Data
- Distributors
- Capabilities Brochure

Home > 3/16 Hex Male-Female Standoffs

3/16 HEX MALE-FEMALE STANDOFFS



[Home](#) [Previous](#) [Next](#)
[Related Metric](#)

Ordering Code			
xxxxx	xxx	xx	x
Length	Thread	Material	Finish

PART: 4501 256 AL

Red ?'s show missing selections. [Help](#)

[Material Specifications](#)
[Ordering non-standard items](#)
[Download a Drawing](#)

Add to Cart

CALL NOW:
 203 888-2133



Qty1 *

Qty2

Qty3

Length *

Select	Part No.	Length
<input type="radio"/>	4500A	5/32
<input type="radio"/>	4500	3/16
<input type="radio"/>	4500T	7/32
<input checked="" type="radio"/>	4501	1/4
<input type="radio"/>	4501T	9/32
<input type="radio"/>	4502	5/16
<input type="radio"/>	4502T	11/32
<input type="radio"/>	4503	3/8
<input type="radio"/>	4503T	13/32
<input type="radio"/>	4504	7/16
<input type="radio"/>	4504T	15/32

Thread *

Select	Code	Thread
<input checked="" type="radio"/>	256	2-56
<input type="radio"/>	440	4-40
<input type="radio"/>	632	6-32

Thread Length Code

Thread	A	B
2-56	3/16	5/32
4-40	1/4	3/16
6-32	3/8	1/4

Material *

Select	Code	Material	RoHS
<input checked="" type="radio"/>	AL	Aluminum	YES
<input type="radio"/>	B	Brass	YES
<input type="radio"/>	SS	Stainless Steel	YES
<input type="radio"/>	S	Steel	YES
<input type="radio"/>	N	Nylon	YES

Finish *

<input checked="" type="radio"/>	Plain Finish
<input type="radio"/>	1-Cad clear chromate/commercial*
<input type="radio"/>	2-Cad clear chromate*
<input type="radio"/>	3-Cad yellow chromate*
<input type="radio"/>	4-Chrome over nickel
<input type="radio"/>	5-Nickel

<input type="radio"/>	6-Gold iridite*
<input type="radio"/>	7-Clear iridite
<input type="radio"/>	9-Alodine 1200*
<input type="radio"/>	10-Bright chrome
<input type="radio"/>	11-Satin chrome
<input type="radio"/>	12-Zinc