



MW Industries, Inc.

- Home

- Products

- Online Catalog

- Request Quote

- Order Online

- Check Stock

- Request Print Catalog

- Request Samples

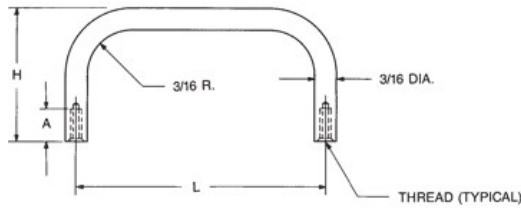
- Engineering Data

- Distributors

- Capabilities Brochure

Home > 1 in. Leg Height 3/16 Round Internal Thread Handles

1 IN. LEG HEIGHT 3/16 ROUND INTERNAL THREAD HANDLES



[Home](#) [Next](#)

Ordering Code			
xxxx	xxx	x	x
Length & Height	Thread	Material	Finish

PART: 8070 440 SS 26

Red ?'s show missing selections. [Help](#)

- [Material Specifications](#)
- [Ordering non-standard items](#)
- [Request a Drawing](#)

CALL NOW:
203 888-2133



Qty1 *

Qty2

Add to Cart

Qty3

Length & Height *

Select	Part No.	L+1/32-1/32	H+1/32-1/32
<input checked="" type="radio"/>	8070	1"	1"
<input type="radio"/>	8071	1-1/4"	1"
<input type="radio"/>	8072	1-1/2"	1"
<input type="radio"/>	8073	1-3/4"	1"
<input type="radio"/>	8074	2"	1"
<input type="radio"/>	8075	3"	1"
<input type="radio"/>	8076	4"	1"
<input type="radio"/>	8077	5"	1"

Thread *

Select	Code	Thread	A
<input checked="" type="radio"/>	440	4-40	1/4-3/8
<input type="radio"/>	632	6-32	5/16-3/8

Material *

Select	Code	Material	RoHS
<input type="radio"/>	A	Aluminum	YES
<input type="radio"/>	B	Brass	YES
<input checked="" type="radio"/>	SS	Stainless Steel	YES
<input type="radio"/>	S	Steel	YES

1 in. Leg Height 3/16 Round Internal Thread Handles

<input type="radio"/>	22-Clear anodize
<input type="radio"/>	23-Yellow green anodize
<input type="radio"/>	24-Black anodize
<input type="radio"/>	25-Black oxide brass
<input checked="" type="radio"/>	26-Black oxide SS
<input type="radio"/>	27-Electro tin solder 60/40*
<input type="radio"/>	28-Zinc yellow chromate
<input type="radio"/>	29-Brushed
<input type="radio"/>	34-Satin clear anodize
<input type="radio"/>	35-Satin black anodize
<input type="radio"/>	37-Ductile nickel
<input type="radio"/>	40-Semi-frost clear anodize
<input type="radio"/>	41-Semi-frost black anodize
<input type="radio"/>	42-Satin