



ABOUT US WHAT'S NEW CONTACT US SERVICES QUALITY SITE MAP

- HOME
- PRODUCTS
- ONLINE CATALOG
- REQUEST QUOTE
- ORDER ONLINE
- CHECK STOCK
- REQUEST PRINT CATALOG
- REQUEST SAMPLES
- ENGINEERING DATA
- DISTRIBUTORS
- CAPABILITIES BROCHURE

CALL NOW:
203 888-2133

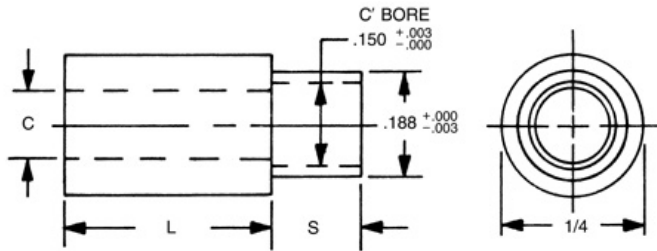
PART NO. SEARCH - ENTER 3-4 CHARS:

ENTER

Catalogs: [ASE](#) | [Metric](#) | [Handles & Ferrules](#)

1/4 Round Swage Spacers

[Home](#) [Previous](#) [Next](#)
[Related Metric](#)



Ordering Code				
xxxx	x	x	x	x
Shank		Material		
Length	Clearance Hole		Finish	

PART: 1532-B-6-B-5

Enter desired quantities:
Qty 1 Qty 2 Qty 3

[Request Quote](#)

[Check Stock](#)

[Request Drawing](#)



Select	Part No.	Length
<input type="radio"/>	1531A	3/32
<input type="radio"/>	1531	1/8
<input type="radio"/>	1531T	5/32
<input type="radio"/>	1532	3/16
<input type="radio"/>	1532T	7/32
<input type="radio"/>	1533	1/4
<input type="radio"/>	1533T	9/32
<input type="radio"/>	1534	5/16
<input type="radio"/>	1534T	11/32
<input type="radio"/>	1535	3/8
<input type="radio"/>	1535T	13/32
<input type="radio"/>	1536	7/16
<input type="radio"/>	1536T	15/32
<input type="radio"/>	1537	1/2
<input type="radio"/>	1537T	17/32

Select	Part No.	Length
<input type="radio"/>	1538	9/16
<input type="radio"/>	1538T	19/32
<input type="radio"/>	1539	5/8
<input type="radio"/>	1539T	21/32
<input type="radio"/>	1540	11/16
<input type="radio"/>	1540T	23/32
<input type="radio"/>	1541	3/4
<input type="radio"/>	1541T	25/32
<input type="radio"/>	1542	13/16
<input type="radio"/>	1542T	27/32
<input type="radio"/>	1543	7/8
<input type="radio"/>	1543T	29/32
<input type="radio"/>	1544	15/16
<input type="radio"/>	1544T	31/32
<input type="radio"/>	1545	1"

Swage/Panel Code			
Select	S	0.003 -0.003	P
<input type="radio"/>	A	.075	1/32
<input type="radio"/>	B	.105	1/16
<input type="radio"/>	C	.135	3/32
<input type="radio"/>	D	.165	1/8
<input type="radio"/>	E	.230	3/16
<input type="radio"/>	F	.290	1/4

Hole Clearance Code		
Select	Code	+0.010 -.000
<input type="radio"/>	2	.090
<input type="radio"/>	3	.101
<input type="radio"/>	4	.115
<input type="radio"/>	6	.140

Select	Code	Material	RoHS
<input type="radio"/>	AL	Aluminum	YES
<input type="radio"/>	B	Brass	YES
<input type="radio"/>	SS	Stainless Steel	YES
<input type="radio"/>	S	Steel	YES

[Material Specifications](#)

SELECT FINISH:

* Finishes ending with an asterisk are not RoHS Compliant

[Ordering non-standard items](#)

Swage Tooling		
Punch	Anvil	Length
P-4	AR-22	3/32-3/16
	AR-23	7/32-7/16
	AR-24	15/32-11/16
	AR-25	23/32-1"

[HOME](#) | [PRODUCTS](#) | [ONLINE CATALOG](#) | [REQUEST QUOTE](#) | [ORDER ONLINE](#) | [CHECK STOCK](#) | [CONTACT US](#) | [SITE MAP](#)

© RAF Electronic Hardware, a Division of MW Industries | 95 Silvermine Rd., Seymour CT 06483 | Tel 203-888-2133 | Fax 203-888-9860