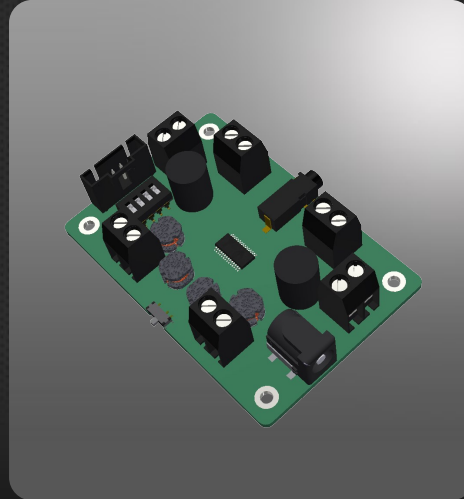


### Product Listing

[Product Applications](#)
[Product Customization](#)
[About Our Products](#)
[HOME](#) / [Products](#) / [Product Listing](#) / [Speakers](#) / **AMP2X15**
[INDICATORS](#)
[TRANSDUCERS](#)
[SIRENS](#)
[MICROPHONES](#)
[PIEZO BENDERS](#)
[SPEAKERS](#)


PART NUMBER

## AMP2X15

[Search Distributor Inventory](#)

[Request a Sample](#)
[Request a Quote](#)

### Description

- Audiophile-grade audio amplifier with up to 15 watts per channel of output
- Single-ended and differential inputs; stereo or mono output
- Built-in over-current and over-temperature protection

### Features

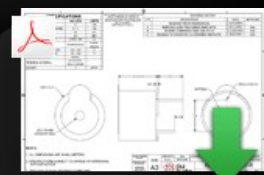
- Small form factor—76.2mm x 50.8mm x 17.5mm (L x W x H)
- Wide +9.5V to +20V DC input range (power supply not included)
- Three different input connections—stereo 3.5mm jack, terminal blocks, six-circuit Molex® SL™ 70543 connector

### Dimensions

- Height: 17.50 mm
- Width: 76.20 mm
- Length: 50.80 mm

### Electrical Specifications

Frequency Range	5 ~ 20000 Hz
Impedance	7.2 kOhms
Maximum Input	20 VDC
Rated Input	9.5 ~ 20 VDC
Resonant Frequency	100 kHz
Sound Pressure Level @ 10 cm (Typ.)	2 x 15W


[Download Spec PDF](#)

PUI Audio  
3541 Stop Eight Rd.  
Dayton, OH 45414

P 937.415.5901  
E [audio@puiaudio.com](mailto:audio@puiaudio.com)

Job Opportunities  
Projects Unlimited, Inc.

#### PRODUCTS

[Product Listing](#)  
[Product Applications](#)  
[Product Customization](#)  
[About Our Products](#)

#### WHERE TO BUY

[Reps and Distributors](#)  
[Distributor Finder](#)  
[Rep Finder](#)

#### RESOURCES

#### ABOUT

[Who We Are](#)  
[Our Quality](#)  
[Our History](#)  
[Corporate](#)  
[Mission & Vision](#)  
[Facility](#)

#### CUSTOMER SERVICE

[Our Process](#)  
[Terms & Conditions](#)  
[RoHS Policy](#)

#### CASE STUDIES

[Issues Happen](#)  
[Out of the Comfort Zone](#)  
[Spanning the Globe](#)  
[Our Responsibility](#)  
[Turning Problems to Partnerships](#)  
[The Right Thing](#)

#### NEWS

[Recent](#)

[Overview](#)  
[FAQs](#)  
[White Papers](#)  
[Sounds](#)  
[Programmable Indicator Software](#)

[Return Policy](#)  
[Special Order Policy](#)  
[Sample Request Policy](#)