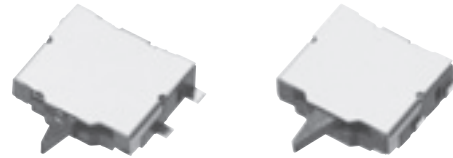


ESE23 Detector Switches

Type: **ESE23**



Thin bidirectional operation, midpoint auto-return Type

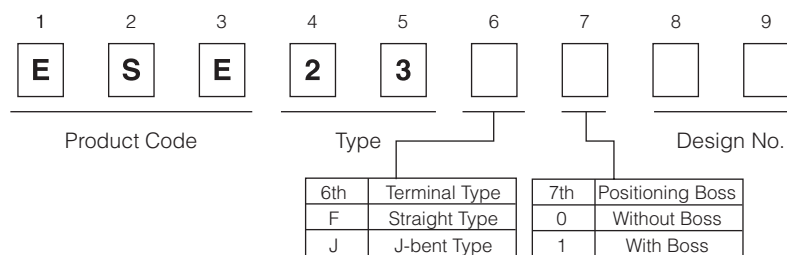
■ Features

- External dimensions : 4.1 mm×5.0 mm, Height 1.5 mm
- Long over-travel (through-operation available)
- Usable as an operation switch (an input device)

■ Recommended Applications

- Detection of media in portable electronic equipment (CD-ROM, DVD, Digital still cameras, etc.)
- Operating switches for other electronic equipment.

■ Explanation of Part Numbers

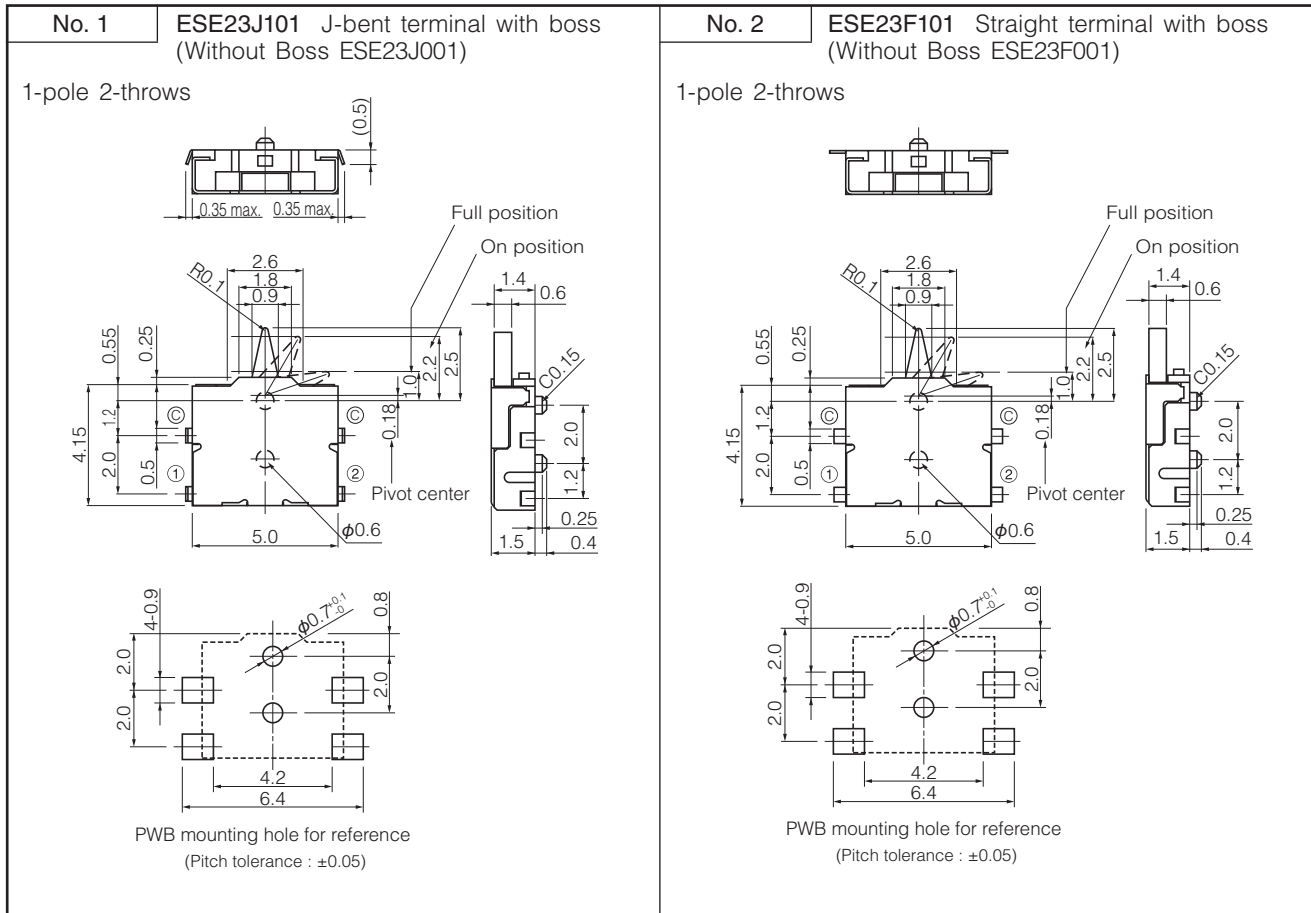


■ Specifications

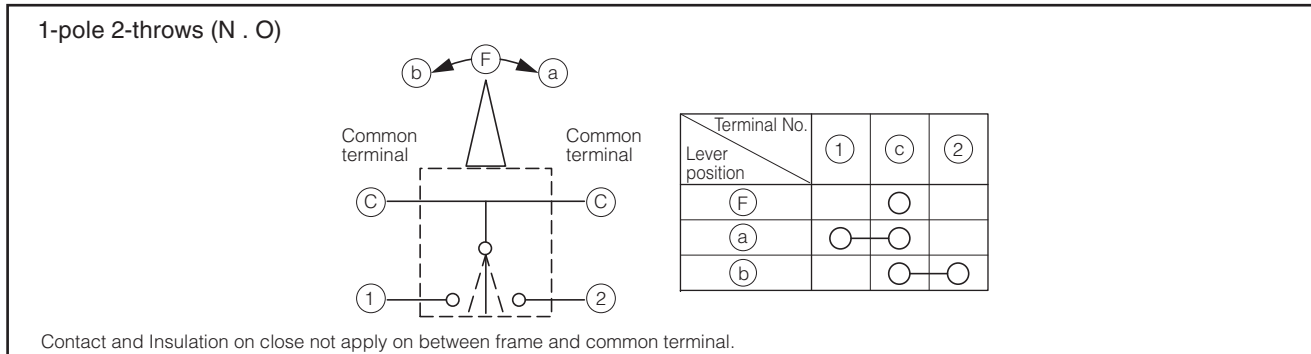
Rating	50 μ A 3 V DC to 10 mA 5 V DC (Resistive load)
Contact Resistance	500 m Ω max. (Initial)
Insulation Resistance	100 M Ω min. (at 100 V DC for 1 minute)
Dielectric Withstanding Voltage	100 V AC (50 Hz or 60 Hz) for 1 minute
Operating Force	300 mN max.
Mounting Height	1.5 mm
Poles and Throws	1-pole 2-throws (OFF at midpoint)
Full Travel (Pushing distance)	With Boss 1.0 mm (1.5 mm) Without Boss 2.2 mm (1.5 mm)
Operating Life	50,000 cycles min.
Temperature Range	-10 $^{\circ}$ C to +60 $^{\circ}$ C (Standard), -40 $^{\circ}$ C to +85 $^{\circ}$ C (Automotive)
Heat Resistance	+70 $^{\circ}$ C for 96 hours
Low Temperature Resistance	-25 $^{\circ}$ C for 96 hours
Humidity Resistance	+40 $^{\circ}$ C 90 % to 95 % RH for 96 hours
Minimum Quantity/Packing Unit	4,000 pcs. Embossed Taping (Reel Pack)
Quantity/Carton	24,000 pcs.

Design and specifications are each subject to change without notice. Ask factory for the current technical specifications before purchase and/or use.
Should a safety concern arise regarding this product, please be sure to contact us immediately.

■ Dimensions in mm (not to scale)

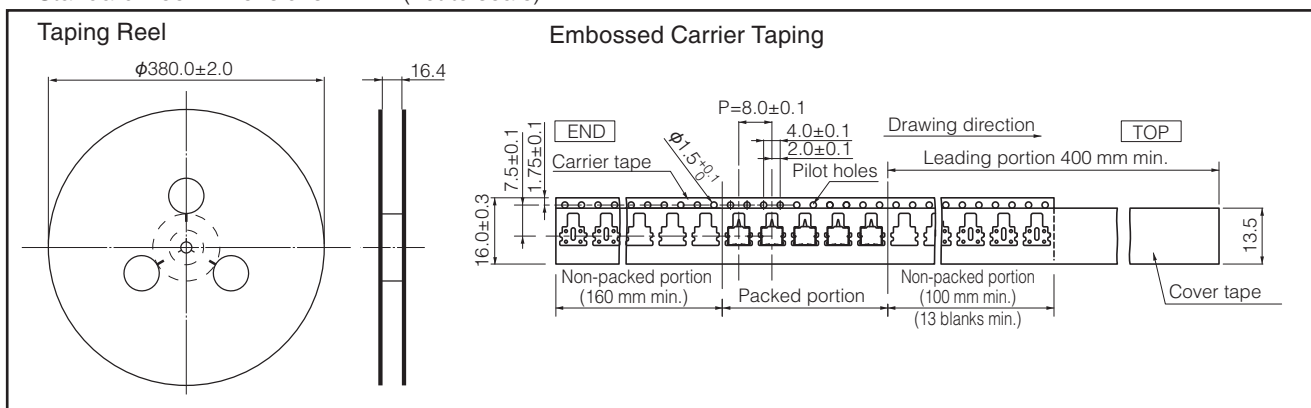


■ Circuit Diagram



■ Packaging Specifications

Standard Reel Dimensions in mm (not to scale)



Design and specifications are each subject to change without notice. Ask factory for the current technical specifications before purchase and/or use.
Should a safety concern arise regarding this product, please be sure to contact us immediately.

Requests to customers

Please refer to "the latest product specifications" when designing your product.

Requests to customers :

<https://industrial.panasonic.com/ac/e/salespolicies/>

Safety Precautions

When using our products, no matter what sort of equipment they might be used for, be sure to confirm the applications and environmental conditions with our specifications in advance.

Please contact

Panasonic Corporation

Electromechanical Control Business Division

■ 1006, Oaza Kadoma, Kadoma-shi, Osaka 571-8506, Japan
industrial.panasonic.com/ac/e/

Panasonic[®]

©Panasonic Corporation 2019