

Search Results

Evaluate

- FAQ's

How to Buy

- Bill of Material

- Favorite Products List

- Locate Distributor

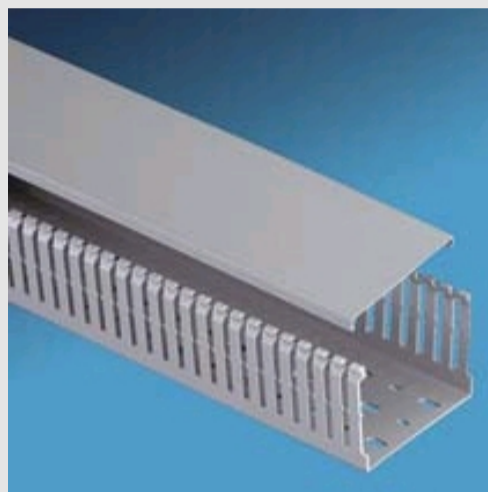
Home > Products Overview > Search Results >

Current refinements (click  to remove) Search Tips

 Text Search: 'MC37X50WH2'

Your search criteria matched only one product, shown below

MC37X50WH2



Choose from 22 sizes of *PANDUIT*® Type MC Wiring Duct from 25mm x 25mm up to 100mm x 100mm. Used for general purpose control panel wiring and to route and protect wiring in communication closets. Ideal for use with high density terminal blocks. The non-slip cover conceals all wiring and is easy to install. The duct and cover form a flush sidewall providing increased capacity and improved aesthetics.

Specifications

- CE compliant and metric sizing for control panels intended for European applications
- Made of lead-free PVC
- Rated for continuous use temperatures up to 122°F (50°C)
- UL94 Flammability Rating V-0
- Conforms with NFPA 79-2002 section 14.3.1 requirement for flame retardant material
- Available in International Gray color and White color
- Provided with DIN 43 659 mounting holes
- Duct and cover packaged together in 2 meter lengths

Features and Benefits

- Narrow finger design provides proper spacing for use with high density terminal blocks
- CE Marked eliminates custom delays, and rework on panels shipped to Europe
- *PANDUIT*® exclusive Rounded Edges will not cut installer's hands or wiring insulation
- Non-slip Cover will not slip when installed on duct base
- Flush Cover Design holds 10-12% more wires than traditional duct designs
- Double Scoreline saves installation time, and ultimately lowers installed cost
- Specially Formulated Lead Free material eliminates health concerns associated with PVC which contains lead
- Restricted Slot Design retains wire in slot for fast, easy wire installation or removal

Base and cover sold together.

Part Number	MC37X50WH2
RoHS Compliancy Status	Compliant
Part Description	Narrow finger, slotted metric wiring duct
Material	Lead-free PVC
Color	White
CSA Certified	Yes
CE Compliant	Yes
CE Marking	Yes
Duct Size W x H (In.)	1.46 x 1.88
Duct Size W x H (mm)	37.1 x 47.8
Mounting Method	Standard Mounting Holes
Pricing Description	Slotted Metric Duct, PVC, 37mm x 50mm x 2m, White
Slot Width (mm)	5.0
Cover Part Number	C37WH2
Min. Order UOM	MR
Min. Order Qty.	20
BOM Qty. (# of Pkgs.)	<input type="text" value="0"/>
Add to Favorite Product List	<input type="button" value="e"/>

Please [register](#) to utilize the 'Bill of Materials', 'Submit Quotes' and 'Favorite Product List' features.