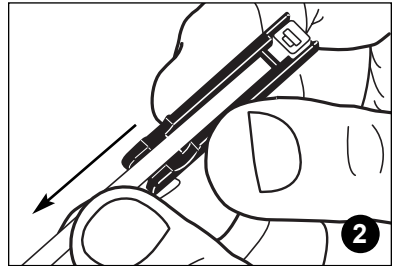




FLAT CABLE MOUNTING SYSTEM INSTALLATION INSTRUCTIONS

フラットケーブル固定具 取り扱い説明書

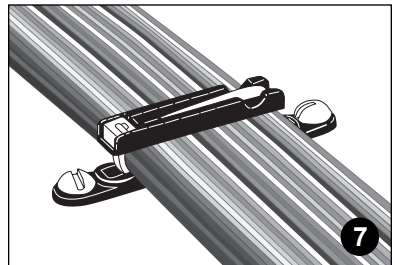
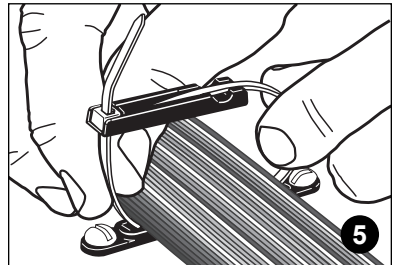
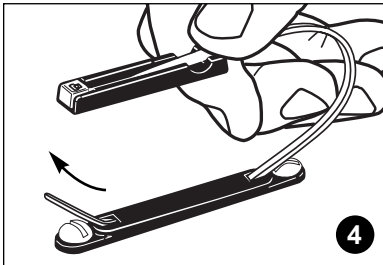
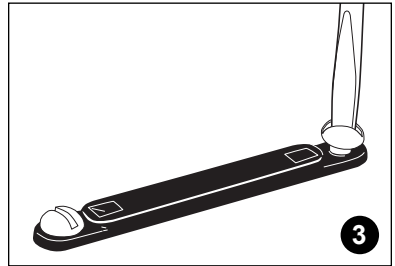
For Mounting 固定



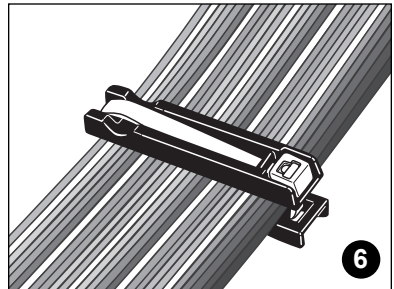
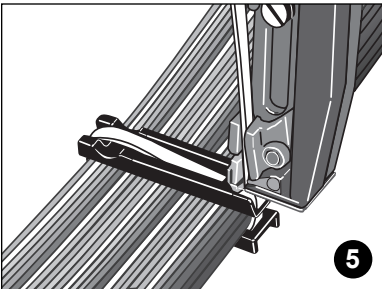
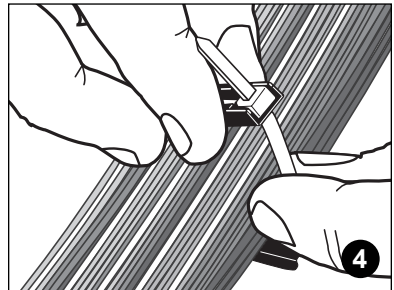
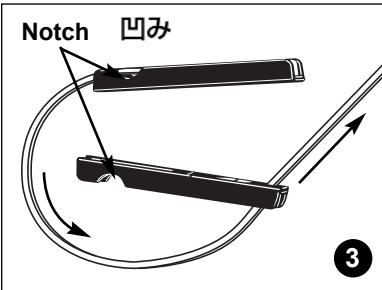
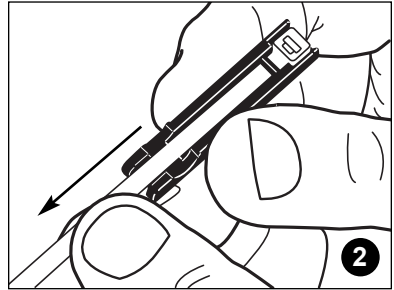
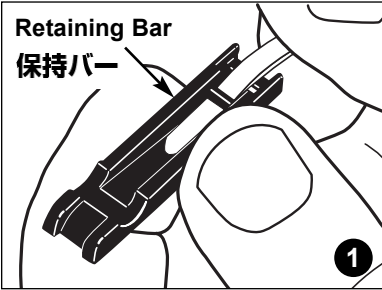
Mount FCBI-S10 base using #10 screws or FCBI-A base using adhesive. No adhesive should enter the cable tie slot.

FCBI-S10はM5のネジで固定。

FCBI-Aは接着剤で固定、
接着剤が結束バンドの
スロットに入らないようにすること。



For Bundling 束線



Part No. PR143N-FCPI, Rev. 2
Printed in U.S.A.

17301 Ridgeland Ave.
Tinley Park, IL 60477-3091
Phone: 866-405-6657
FAX: 770-781-9076
Email: wainfo@panduit.com
Website: www.panduit.com/eg