

PANDUIT[®] infrastructure for a connected world



**Space Saving
Cable Management Rack Systems**

Maximize Space Utilization, Enhance Network Reliability

The trend towards consolidation, virtualization and automation in the enterprise is driving the need to maximize space utilization to reduce capital expenditures and operational costs while maintaining network reliability and availability. This trend is placing greater demands on the physical infrastructure to help manage growing cable densities, larger network equipment and increasing energy usage.

Space Optimized, High Capacity Cable Management Systems

Panduit builds on years of experience as a leader in cable management, integrating best practices and application knowledge to develop highly reliable and efficient physical infrastructure solutions. Panduit's comprehensive offering of vertical cable management, horizontal cable management, and rack solutions reduces space required to route, manage and protect high cable capacities, providing the lowest total cost of ownership. These product sets can be combined to provide an optimized solution for virtually any application. PatchRunner™ High Capacity and PatchRunner™ 2 Vertical Cable Management Systems address the needs of the data center and telecommunications rooms to deliver improved network performance and reduced real estate costs. Superior cable management features and innovative vertical RU mounting maximize capacity and enable efficient moves, adds, and changes to reduce operational costs.

PatchRunner™ High Capacity Vertical Cable Management System

PatchRunner™ High Capacity Vertical Cable Managers are optimized to provide the maximum amount of capacity, flexibility and accessibility for high density switch and server applications.

PatchRunner™ 2 Vertical Cable Management System

PatchRunner™ 2 Vertical Cable Managers are designed to provide the best combination of features and value for high density enterprise telecommunications rooms and data center applications.

2 Post and 4 Post Racks

PatchRunner™ 2 and PatchRunner™ High Capacity Systems can be seamlessly integrated into Panduit's versatile 2 post and 4 post racks. Designed for today's larger network equipment, Panduit racks provide strength, capacity and thermal features that help ensure network availability. The 2 post and 4 post rack thermal accessories provide proper heat dissipation of active equipment, improving network reliability.

Reduce Real Estate Cost and Space Utilization by **35%** with Panduit High Capacity Cable Management Systems



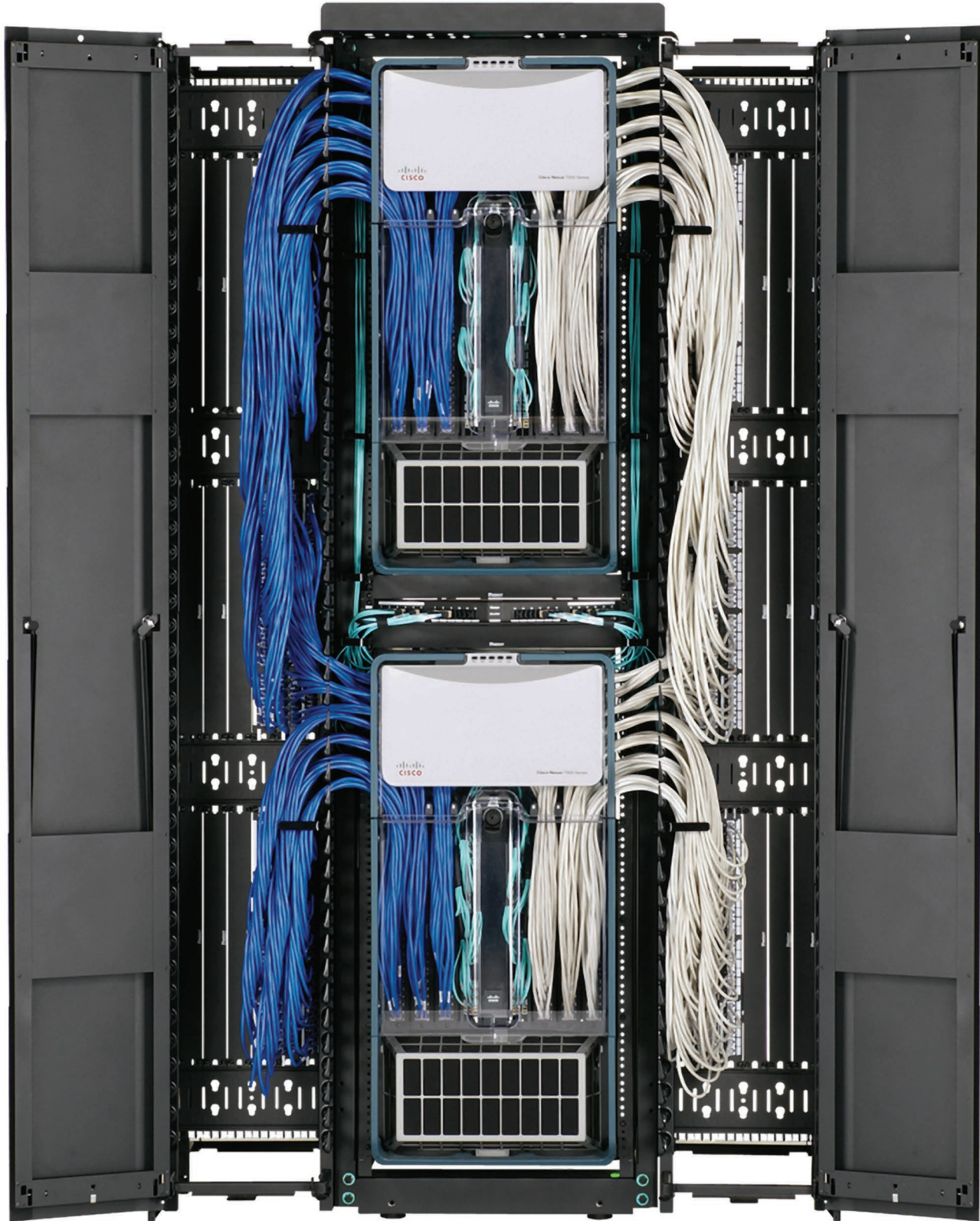
Floor Space Required

Layout	Traditional NetRunner™ Vertical Cable Management System	High Density PatchRunner™ High Capacity Vertical Cable Management System	Vertical Patching PatchRunner™ High Capacity Vertical Cable Management System
Footprint Width	114.6" (2.91m)	68.6" (1.74m)	44.3"(1.13m)
Areas	21.1 Sq. ft.	13.4 Sq. ft.	8.7 Sq. ft.
Real Estate Cost	\$54,016	\$34,304	\$22,272

Real estate cost based on a 2010 Gartner estimate for a Tier 3 data center.
Refer to page 18 and 19 for capacity and space requirements for specific solutions.

High Density Solutions for the Cisco^ Nexus 7010 Switch

High performance network switching requires innovation in every aspect of the physical infrastructure. The right solution helps manage equipment, connectivity, and available space for maximum density, scalability and usability. The PatchRunner™ High Capacity Vertical Cable Management System offers the highest cable capacities for maximum densities, scalability, and superior space utilization.



^Cisco is a registered trademark of Cisco Technology Inc.

Maximum Capacity with Minimal Space



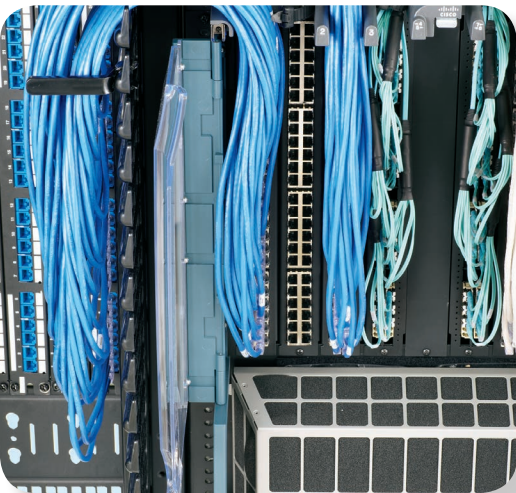
- Vertical patching enables two Cisco^ Nexus 7010 Switches to be deployed within a single rack, eliminating the need for a separate patching rack

- Strong, flexible fingers support Category 6A cables without deforming



- Enables standard 19" patch panels to be mounted vertically, freeing up rack spaces for additional equipment

- Allows patch panels to be positioned near switch ports, optimizing patch cord lengths



- Accepts either copper or fiber patch panels
- Minimizes slacking and allows for a more efficient use of the vertical manager space

Maximum Versatility and Strength



- The 4 post rack depth encases Nexus 7010 switches, providing increased physical protection

- Rack features allow quick POU mounting

- UL listed 2500 lb. (1134kg) load rating securely supports two Nexus 7010 switches and cabling

Infrastructure Showcase

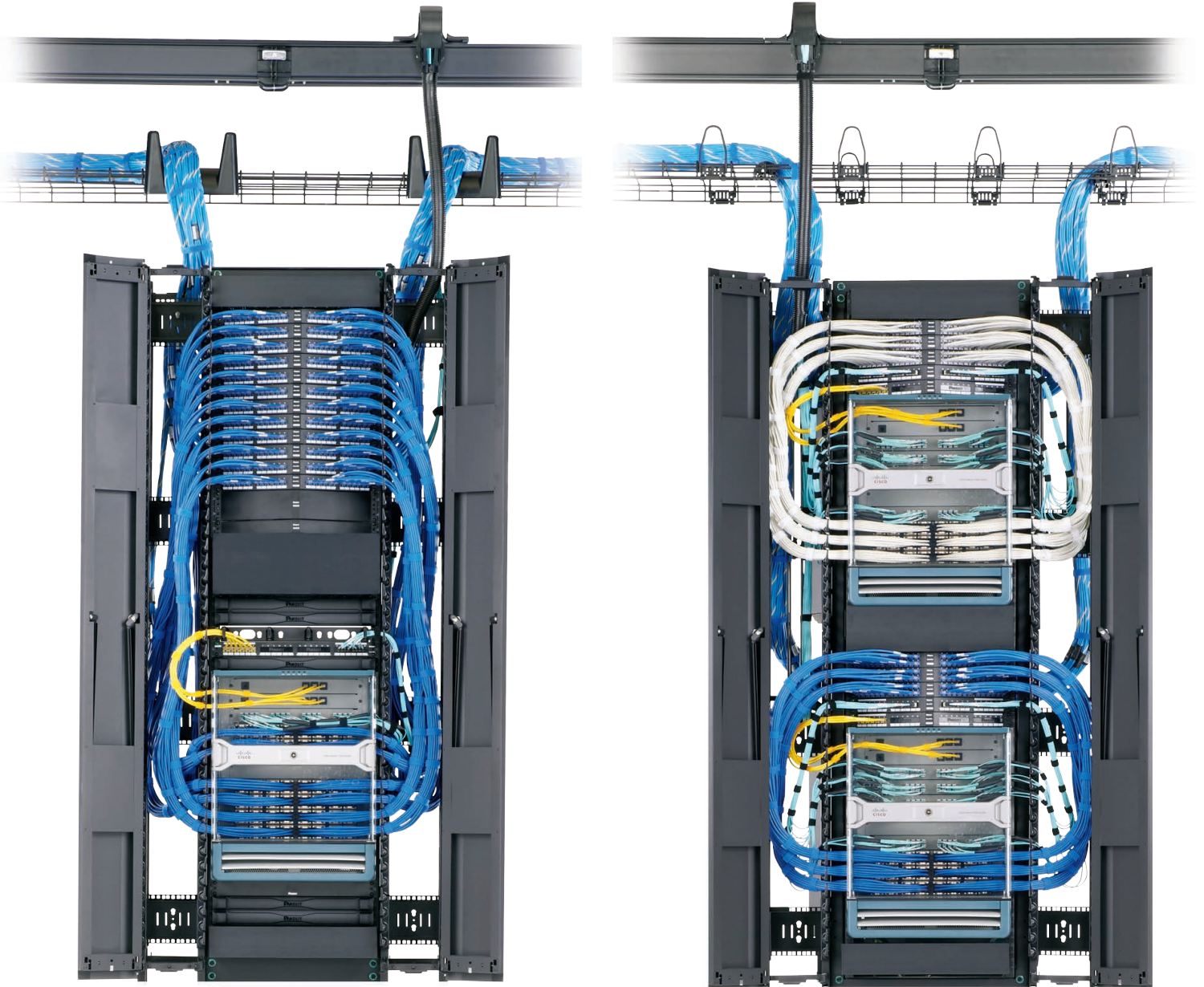


- The push shut door with visual and audible feedback delivers a clean aesthetic look

- End panels enable the vertical managers to be closed off, increasing protection and providing a clean look at the end of your lineup

High Density Solutions for the Cisco^ Nexus 7009 Switch

Effectively deploying high performance network switches requires in-depth knowledge of cable management, infrastructure, thermal management, and the ability to apply that knowledge in the creation of superior solutions.



Equipment management protects equipment, delivers UL rated support, and enables equipment airflow patterns. Vertical cable management provides slacking of patch cords, and provides options to simplify system organization and interface to the system-wide infrastructure

- FiberRunner® and Wyr-Grid® Overhead Routing Systems (depicted at top left and right) route, manage, and protect cables throughout the data center*.

Cable Management



- Space between individual fingers organize up to 48 Category 6A cables



- Deep vertical managers provide space to manage high densities

Thermal Management

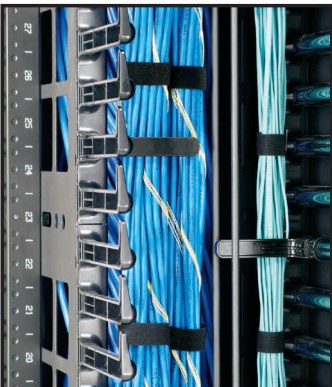


- Vertical strain relief bars effectively manage structured cabling in the rear of the rack and separate cable types

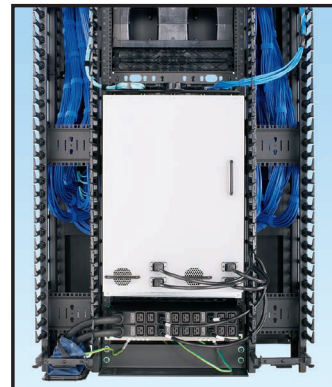


- Flexible power outlet unit mounting for any equipment power requirements

Infrastructure



- Open areas enable equipment airflow patterns



- Front to back spaces can be closed off for hot/cold aisle applications

*Download the Wyr-Grid® Overhead Cable Tray Routing System brochure (SA-RKCB18) and FiberRunner® Application Guide (SA-FRCB02) at www.panduit.com.

^Cisco is a registered trademark of Cisco Technology Inc.

PatchRunner™ High Capacity Vertical Cable Management System

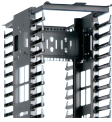
1 4 Post Rack

- R4P**
84.0"H x 23.25"W x 30.0"D
45 rack spaces
- R4P23**
84.0"H x 23.25"W x 23.0"D
45 rack spaces
- R4P36**
84.0"H x 23.25"W x 36.0"D
45 rack spaces
- R4P42**
84.0"H x 23.25"W x 41.5"D
45 rack spaces



2 PEV12

- PatchRunner™ High Capacity Vertical Cable Managers
- Available in 6", 8", 10", and 12" widths



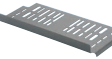
3 PED12B1

- PatchRunner™ High Capacity Dual Hinged Metal Doors
- Available in 6", 8", 10", and 12" widths



4 R4PWF

- Rack Top Trough with Waterfall creates pathway above rack



5 NM2

- NetManager™ High Capacity Horizontal Cable Manager

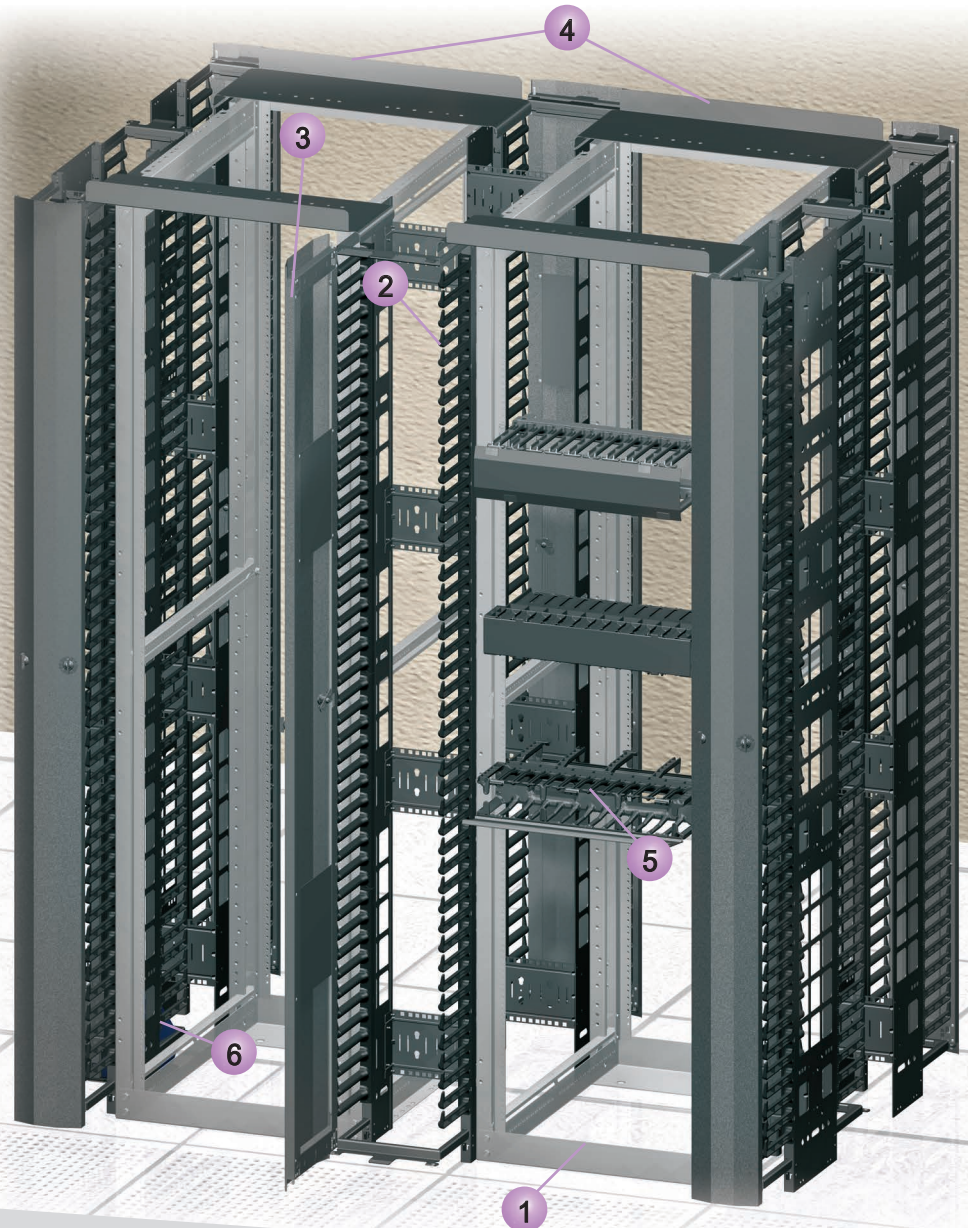


6 RFG6X8

- Cool Boot® Raised Floor Air Sealing Grommet



The capacity of this vertical manager is ideal for Category 6A cabling or other cabling systems. Integral EIA zero rack space mounting capability in the back of the manager allows equipment to be patched in the PatchRunner™ High Capacity Vertical Cable Manager, freeing up valuable rack space for equipment and allowing the use of shorter length patch cords.

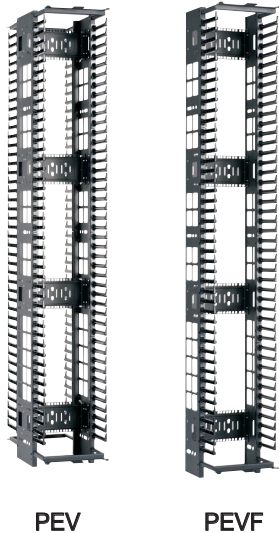


PatchRunner™ High Capacity Vertical Cable Managers



- High capacity minimizes area required for network layout, freeing up valuable floor space
- Allows vertical mounting of many standard EIA 19" accessories, such as patch panels
- Ventilated side walls provide maximum airflow for equipment cooling

- Snap-on finger sections can be removed to improve airflow, and break away fingers allow routing of large cable bundles
- Large finger spacing accommodates up to 48 Category 6A cables
- Optional sure close dual hinged metal doors provide easy access to vertical pathway and provide visual and audible feedback on closure



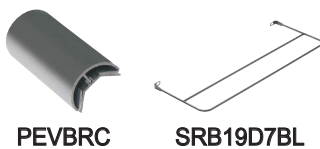
PEV

PEVF



PED

PEVEPB1



PEVBRC

SRB19D7BL

Part Number	Part Description	No. of Rack Spaces‡	Std. Pkg. Qty.
-------------	------------------	---------------------	----------------

High Capacity Dual Sided Vertical Managers

PEV6*	Dimensions: 83.5"H x 6.0"W x 28.1"D (2120mm x 152mm x 714mm)	45	1
PEV8*	Dimensions: 83.5"H x 8.0"W x 28.1"D (2120mm x 203mm x 714mm)	45	1
PEV10*	Dimensions: 83.5"H x 10.0"W x 28.1"D (2120mm x 254mm x 714mm)	45	1
PEV12*	Dimensions: 83.5"H x 12.0"W x 28.1"D (2120mm x 305mm x 714mm)	45	1

High Capacity Single Sided Vertical Managers

PEVF6*	Dimensions: 83.5"H x 6.0"W x 15.9"D (2120mm x 152mm x 404mm)	45	1
PEVF8*	Dimensions: 83.5"H x 8.0"W x 15.9"D (2120mm x 203mm x 404mm)	45	1
PEVF10*	Dimensions: 83.5"H x 10.0"W x 15.9"D (2120mm x 254mm x 404mm)	45	1
PEVF12*	Dimensions: 83.5"H x 12.0"W x 15.9"D (2120mm x 305mm x 404mm)	45	1

PatchRunner™ High Capacity Dual Hinged Metal Doors

PED6B1*	Dimensions: 82.8"H x 6.1"W x 1.7"D (2103mm x 155mm x 43mm)	45	1
PED8B1*	Dimensions: 82.8"H x 8.1"W x 1.7"D (2103mm x 206mm x 43mm)	45	1
PED10B1*	Dimensions: 82.8"H x 10.1"W x 1.7"D (2103mm x 256mm x 43mm)	45	1
PED12B1*	Dimensions: 82.8"H x 12.1"W x 1.7"D (2103mm x 307mm x 43mm)	45	1

Accessories

PEVEPB1	End Panel. Dimensions: 83.7"H x 23.2"W x 0.5"D (2125mm x 590mm x 12mm)	45	1
PEVBRC6	Horizontal cross brace bend radius control clips for PatchRunner™ High Capacity Vertical Cable Managers PEV6 and PEVF6.	–	1
PEVBRC8	Horizontal cross brace bend radius control clips for PatchRunner™ High Capacity Vertical Cable Managers PEV8 and PEVF8.	–	1
PEVBRC10	Horizontal cross brace bend radius control clips for PatchRunner™ High Capacity Vertical Cable Managers PEV10 and PEVF10.	–	1
PEVBRC12	Horizontal cross brace bend radius control clips for PatchRunner™ High Capacity Vertical Cable Managers PEV12 and PEVF12.	–	1
SRB19D7BL	Strain relief bar extends 7" off the rack; supports, manages, and provides proper bend radius protection. Ideal for use with Category 6A copper cabling installations.	1	1

*For part numbers that fit 8' rack, add "96" to end of part number. Overall height for managers is 95.5" (2426mm).

For 8' doors, add "96" before B1. For example: PED696B1.

Overall door height is 94.4" (2399mm).

‡One rack space = 1.75" (44.45mm).

All product color is black.

For PatchRunner™ High Capacity Vertical Cable Manager Specifications, see page 18.

PatchRunner™ 2 Vertical Cable Management System

1 2 Post Rack

- R2P**
84.0"H x 20.3"W x 3.0"D
45 rack spaces
aluminum
- R2P96**
96.0"H x 20.3"W x 3.0"D
52 rack spaces
aluminum



Provides cost effective solutions that organize, manage, protect and showcase network cabling while ensuring system performance and reliability. Optimal compatibility with Panduit racks, patch panels, and connectivity provides a complete end-to-end solution.

2 PR2VD12

- 12"W Front and Rear
PatchRunner™ 2 Vertical Cable
Manager with doors –
45 rack spaces



3 R2PPR2VWF

- Rack Top Trough with
Waterfall creates pathway
above rack



4 PR2VEP

- End Panel for PatchRunner™ 2
Vertical Cable Managers



5 CMPH2

- 2 RU Open-Access™
Horizontal Cable Manager
D-rings



6 WMP1E

- 2 RU PatchLink™ Horizontal
Cable Manager



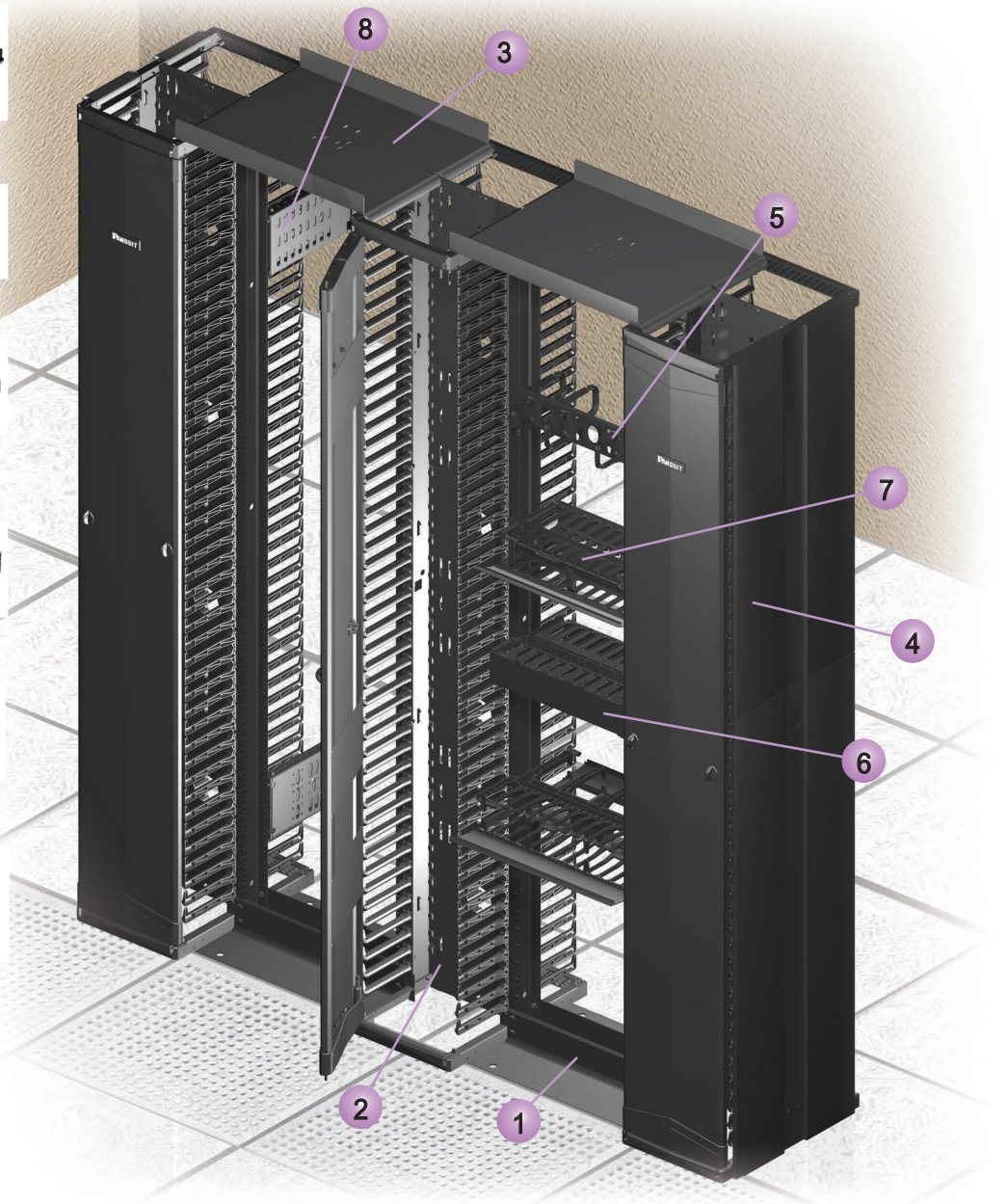
7 NM2

- 2 RU NetManager™ High
Capacity Horizontal
Cable Manager



8 R2PPDUB

- Power Distribution Unit (PDU)
bracket for 2 and 4 post racks



PatchRunner™ 2 Vertical Cable Managers



- Large finger openings accommodate up to 48 Category 6A cables
- “Push-to-close” door design allows for easy operation

- Integral cable retainer on ends of each finger contain cables within each rack unit
- No assembly required; faster installation while reducing labor costs
- Doors ship with managers, simplifying ordering process with less packaging waste



PR2VD



PR2VFD



PR2VEP



PR2VBPK



R2PPR2VWF



R4PPR2VWF



PRSP7



WR5E-X

Part Number	Part Description	No. of Rack Spaces‡	Std. Pkg. Qty.
-------------	------------------	---------------------	----------------

High Capacity Dual Sided Vertical Managers with two doors

PR2VD06	Dimensions: 83.9"H x 6.0"W x 20.7"D (2130mm x 152mm x 526mm)	45	1
PR2VD08	Dimensions: 83.9"H x 8.0"W x 20.6"D (2130mm x 203mm x 523mm)	45	1
PR2VD10	Dimensions: 83.9"H x 10.0"W x 20.6"D (2130mm x 254mm x 524mm)	45	1
PR2VD12	Dimensions: 83.9"H x 12.0"W x 20.6"D (2130mm x 305mm x 523mm)	45	1

High Capacity Single Sided Vertical Managers with one door

PR2VFD06	Dimensions: 83.9"H x 6.0"W x 12.0"D (2130mm x 152mm x 305mm)	45	1
PR2VFD08	Dimensions: 83.9"H x 8.0"W x 11.9"D (2130mm x 203mm x 303mm)	45	1
PR2VFD10	Dimensions: 83.9"H x 10.0"W x 11.9"D (2130mm x 254mm x 303mm)	45	1
PR2VFD12	Dimensions: 83.9"H x 12.0"W x 11.9"D (2130mm x 305mm x 303mm)	45	1

Accessories

PR2VBPK	Pass-through hole blanking plugs (kit of five plugs).	—	5
PR2VEP	End panel for use with PR2V series.	45	1
R4PPR2VWF	Rack top trough with waterfall for use with R4P 4-post racks and PR2V series managers.	—	1
R2PPR2VWF	Rack top trough with waterfall for use with R2P 2-post racks and PR2V series managers	—	1
PRSP7	7"D front slack management spool.	—	1
PRSP5	5"D rear slack management spool.	—	1
WR5E-X	Snap-on cable retainer.	—	10

‡One rack space = 1.75" (44.45mm).

7ft managers and accessories are available in black or white. For white products, add "WH" to end of part number.

Example: PR2VD06WH.

All product color is black.

For PatchRunner™ 2 Vertical Cable Manager Specifications, see page 19.

Note: For 8ft products, add "96" to end of part number. Examples: PR2VD1296 and PR2VEP96

4 Post Cable Management Rack System

1 4 Post Rack

R4P36CN

Cage nut rails
84.0"H x 23.25"W x 36.0"D
45 rack spaces

R4P42CN

Cage nut rails
84.0"H x 23.25"W x 41.5"D
45 rack spaces



Deep 4 post open server racks provide the necessary environment for high density server applications. The open design assures maximum ventilation while minimizing air mixing in hot/cold aisle configurations. Space in the rear of the 4 post racks allows for server power, cable management and patching, providing an efficient and functional server solution.

2 R4PFP

- Vertical Blanking Panel



3 CVPDUB

- PDU
Mounting Brackets



4 CVPPB

- Vertical Patch Panel
Mounting Bracket



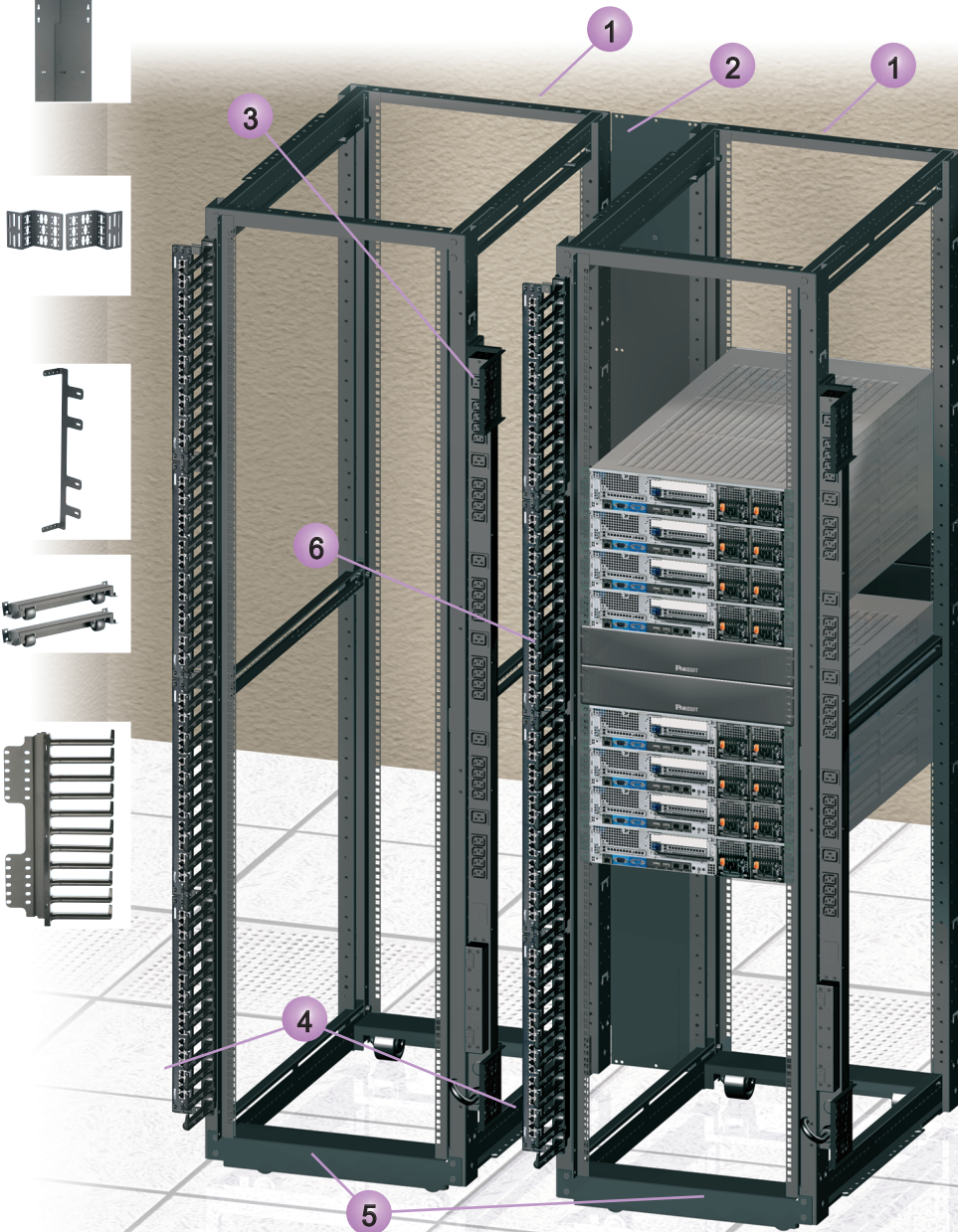
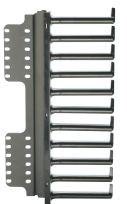
5 RCSTR

- Caster set



6 R4PFL

- Vertical finger section for
cable management



4 Post Rack System configured for server application.

4 Post Cable Management Rack System and Accessories

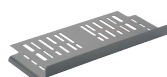


- Offered in 23", 30", 36" and 42" depths
- Offered in 84" and 96" heights
- Fully adjustable rails can be adjusted after rack is secured to floor

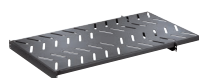
- Cage nut rails for server applications and tapped rails for switch applications
- 2,500 lbs. (1134 kg) load rating, UL Listed



R4P



R4PWF



RSHLF



CVPPB



CNSPE



CVPDUB



R4PFL

Part Number	Part Description	No. of Rack Spaces‡	Std. Pkg. Qty.
4 Post Rack Threaded Rail			
R4P23*	Dimensions: 84.0"H x 23.25"W x 23.0"D (2134mm x 591mm x 584mm).	45	1
R4P*	Dimensions: 84.0"H x 23.25"W x 30.0"D (2134mm x 591mm x 762mm).	45	1
R4P36*	Dimensions: 84.0"H x 23.25"W x 36.0"D (2134mm x 591mm x 914mm).	45	1
R4P42*	Dimensions: 84.0"H x 23.25"W x 41.5"D (2134mm x 591mm x 1054mm).	45	1

4 Post Rack Accessories			
R4PWF	Top trough with waterfall creates pathway above rack. Dimensions: 1.9"H x 26.1"W x 8.5"D (50mm x 662mm x 216mm).	—	1
RSHLF23	4 post rack mount shelf. Load rating 275 lbs.(124.7 kg). Dimensions: 1.7"H x 19.0"W x 23.0"D (44mm x 483mm x 584mm).	1	1
RSHLF	4 post rack mount shelf. Load rating 275 lbs. (124.7 kg). Dimensions: 1.7"H x 19.0"W x 30.0"D (44mm x 483mm x 762mm).	1	1
RSHLF36	4 post rack mount shelf. Load rating 275 lbs. (124.7 kg). Dimensions: 1.7"H x 19.0"W x 36.0"D (44mm x 483mm x 914mm).	1	1
R4PFP	Adjustable vertical filler panel for Panduit 4 Post Racks blocks by-pass air and directs cold airflow through equipment when used.	45	1
RCSTR	4 post rack casters.	—	1
CVPPB	Bracket to vertically mount 1 RU EIA 19" copper and fiber patch panels to the side of the Net-Access™ Cabinet posts or 4 post racks.	—	1
CNSPE	Net-Access™ Network Cabinet and 4 post rack end channel slack spools. Package includes one left and one right slack spool and mounting brackets.	—	1
CVPDUB	Bracket for vertical POU mounting to the side of the Net-Access™ Cabinet posts or 4 post racks (kit of two).	—	1
R4PFL	Left vertical finger section for cable management.	11	1
R4PFR	Right vertical finger section for cable management.	11	1
R4PFM	Finger managers for 7 and 8 foot Panduit 4 Post Racks.	20	2

*For 7' 4 Post Rack Cage Nut Rail add suffix CN to the end of the part number, for example, R4P23CN.
 NOTE: For 8' 4 Post Rack Threaded Rail, add suffix 96 to the end of the part number, for example, R4P2396. For 8' 4 Post Rack Cage Nut, add suffix CN96 to the end of the part number, for example, R4P23CN96.

‡One rack space = 1.75" (44.45mm).

All product color is black.

7ft 30"D and 36"D 4-post racks are available in white. Add "WH" to end of part number. Examples: R4PWH and R4PCNWH.

2 Post Rack System

- Offered in 84" (2134mm) and 96" (2441mm) versions for both the three inch deep channel rack and six inch deep channel rack
- Rack space identification is printed numbers up allowing quick and easy equipment installation and identification
- Fully bonded structure

- 3" (76mm) deep channel, 1000 lb. (454 kg) load rating, UL listed
- 6" (152mm) deep channel, 1500 lb. (680 kg) load rating, UL listed
- Perforated rails for cable access and side-to-side airflow switches [6" (152mm) depth only]



R2P

R2P6S



R2PPEVWF



R2PPDUB

Part Number	Part Description	No. of Rack Spaces‡	Std. Pkg. Qty.
-------------	------------------	---------------------	----------------

3" Deep Channel Rack

R2P	19" EIA rack, aluminum. Dimensions: 84.0"H x 20.3"W x 3.0"D (2134mm x 514mm x 76mm).	45	1
R2P96	19" EIA rack, aluminum. Dimensions: 96.0"H x 20.3"W x 3.0"D (2438mm x 514mm x 76mm).	52	1
R2PS	19" EIA rack, steel. Dimensions: 84.0"H x 20.3"W x 3.0"D (2134mm x 514mm x 76mm).	45	1
R2PW	23" EIA rack, aluminum. Dimensions: 84.0"H x 24.3"W x 3.0"D (2134mm x 616mm x 76mm).	45	1
R2P48	19" EIA rack, aluminum. Dimensions: 48.0"H x 20.3"W x 3.0"D (1219mm x 514mm x 76mm).	24	1

6" Deep Channel Rack

R2P6S	19" EIA rack, 6" channel, steel. Dimensions: 84.0"H x 20.3"W x 6"D (2134mm x 514mm x 152mm).	45	1
R2P6S96	19" EIA rack, 6" channel, steel. Dimensions: 96.0"H x 20.3"W x 6"D (2438mm x 514mm x 152mm).	52	1

Accessories

RFAKIT	Rack anchor kit for concrete floor (set of four).	—	1
R2PPDUB	Power Distribution Unit (PDU) bracket for 2 and 4 post racks (set of two).	—	1
R2PPEVWF	Waterfall Trough for 2 Post Rack and PatchRunner™ High Capacity Vertical Cable Managers.	—	1
R2PPR2VWF	Waterfall Trough for 2 Post Rack and PatchRunner™ 2 Vertical Cable Managers.	—	1
S1224-C	#12-24 x .5" mounting screws.	—	100

‡One rack space = 1.75" (44.45mm).

All product color is black.

7ft 2-post rack is available in white. PN: R2PWH.



NetManager™ High Capacity Horizontal Cable Managers

- Innovative inset fingers slope inward toward back of managers offering unobstructed access to network cabling for easier moves, adds, and changes
- Large front finger openings easily accommodate Category 6A and Category 6 cables, speeding installation and reducing maintenance costs
- Rear cable management finger spacing utilizes open D-rings for greater accessibility
- Can be used to create large capacity horizontal pathways for routing cable
- Front and rear dual hinged cover allows cable access without removing cover
- Built in cable retainers hold cable in place for easy moves, adds, and changes



NM2



NMF2



NMF3



NMF4

Part Number	Part Description	No. of Rack Spaces‡	Std Pkg Qty.
19" Manager, Front and Rear			
NM1	1.7"H x 19.0"W x 13.1"D (44mm x 482mm x 332mm).	1	1
NM2	3.5"H x 19.0"W x 13.1"D (88mm x 482mm x 332mm).	2	1
NM3	5.2"H x 19.0"W x 13.1"D (133mm x 482mm x 332mm).	3	1
NM4	7.0"H x 19.0"W x 13.1"D (177mm x 482mm x 332mm).	4	1

19" Manager, Front Only			
NMF1*	1.7"H x 19.0"W x 6.2"D (44mm x 482mm x 157mm).	1	1
NMF2*	3.5"H x 19.0"W x 6.2"D (88mm x 482mm x 157mm).	2	1
NMF3*	5.2"H x 19.0"W x 6.2"D (133mm x 482mm x 157mm).	3	1
NMF4*	7.0"H x 19.0"W x 6.2"D (177mm x 482mm x 157mm).	4	1

Part Number	Part Description	Std Pkg Qty.
Accessories		
NM1B	Front to rear pass through blanking panel for NetManager™ High Capacity Horizontal Cable Managers, NM1 and NMF1.	1
NM2B	Front to rear pass through blanking panel for NetManager™ High Capacity Horizontal Cable Managers, NM2 and NMF2.	1
NM3B	Front to rear pass through blanking panel for NetManager™ High Capacity Horizontal Cable Managers, NM3 and NMF3.	1
NM4B	Front to rear pass through blanking panel for NetManager™ High Capacity Horizontal Cable Managers, NM4 and NMF4.	1

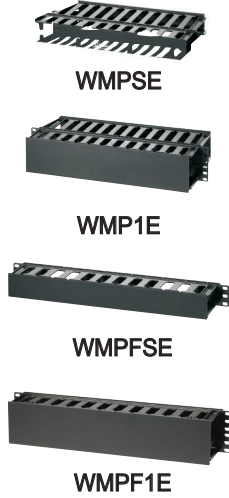
*Also available in white. Add "WH" to end of part number.
 ‡One rack space = 1.75" (44.45mm).
 All product color is black.

Horizontal Cable Management Systems

PatchLink™ Horizontal Cable Managers

- Dual-hinged cover allows cable access without removing cover
- Rounded edges on fingers protect cables from snags and damage to cable

- Flexible fingers allow easy installation and removal of cables
- Pass-through holes allow front to rear cabling
- Covers and #12-24 mounting screws included
- Bulk package options minimize packaging on-site



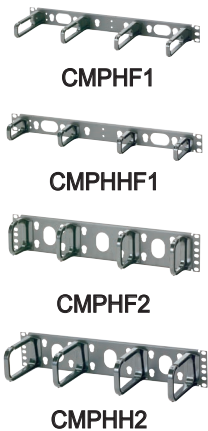
Part Number	Part Description	No. of Rack Spaces‡	Std Pkg Qty.
19" Manager, Front and Rear			
WMPSE	1.7"H x 19.0"W x 8.9"D (44mm x 483mm x 226mm).	1	1
WMP1E	3.5"H x 19.0"W x 8.9"D (89mm x 483mm x 226mm).	2	1
19" Manager, Front Only			
WMPFSE	1.7"H x 19.0"W x 3.7"D (44mm x 483mm x 94mm).	1	1
WMPF1E	3.5"H x 19.0"W x 3.7"D (89mm x 483mm x 94mm).	2	1

‡One rack space = 1.75" (44.45mm).
All product color is black.

Open-Access™ Horizontal Cable Managers

- D-ring managers provide an open and efficient way to manage power, coaxial, and communications cables
- Optional snap-on cover

- Optional front and rear managers
- Pass-through holes allow front to rear cabling
- Hardware included



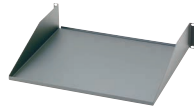
Part Number	Part Description	No. of Rack Spaces‡	Std Pkg Qty.
19" Manager, Front and Rear			
CMPHF1	1.7"H x 19.0"W x 8.6"D (44mm x 483mm x 218mm).	1	1
CMPHF2	3.5"H x 19.0"W x 8.6"D (88mm x 483mm x 218mm).	2	1
19" Manager, Front Only			
CMPHF1	1.7"H x 19.0"W x 3.4"D (44mm x 483mm x 87mm).	1	1
CMPHF2	3.5"H x 19.0"W x 3.4"D (88mm x 483mm x 87mm).	2	1
CMPHH1	1.7"H x 19.0"W x 5.7"D (44mm x 483mm x 144mm).	1	1
CMPHH2	3.5"H x 19.0"W x 5.7"D (88mm x 483mm x 144mm).	2	1

‡One rack space = 1.75" (44.45mm).
All product color is black.



Rack Mount Shelves for 2 Post Racks

- Load ratings up to 250 lbs.; refer to part descriptions for specific load ratings



SRM19FM2



SRM19CMV3



SRM19X18A1

Part Number	Part Description	No. of Rack Spaces‡	Std. Pkg. Qty.
SRM19FM1	19" front mount shelf, steel. Dimensions: 1.7"H x 19.0"W x 15.2"D (44mm x 483mm x 385mm). Load rating 30 lbs. (13.6 kg).	1	1
SRM19FM2	19" front mount shelf, steel. Dimensions: 3.5"H x 19.0"W x 15.2"D (88mm x 483mm x 385mm). Load rating 50 lbs. (22.7 kg).	2	1
SRM19CMV3	19" cantilevered shelf, vented aluminum. Includes two-piece shelf that mounts to front and back of EIA racks. Dimensions: 5.2"H x 19.2"W x 12.5"D (133mm x 489mm x 316mm). Load rating 200 lbs. (90.9 kg).	3	1
SRM19CM3	19" cantilevered shelf, aluminum. Includes two-piece shelf that mounts to front and back of EIA racks. Dimensions: 5.2"H x 19.2"W x 12.5"D (133mm x 489mm x 316mm). Load rating 200 lbs. (90.9 kg).	3	1
SRM19X18A1	19" adjustable mount shelf, steel, mounts to front and back of EIA racks. Dimensions: 1.8"H x 19.0"W x 18.0"D (44mm x 483mm x 457mm). Load rating 250 lbs. (113.6 kg).	1	1
SRM19X25A1	19" adjustable mount shelf, steel, mounts to front and back of EIA racks. Dimensions: 1.8"H x 19.0"W x 25.0"D (44mm x 483mm x 635mm). Load rating 250 lbs. (113.6 kg).	1	1

‡One rack space = 1.75" (44.45mm).
All product color is black.

Tool-Less Blanking Panels

- Minimize bypass airflow in racks and cabinets while providing an aesthetic appearance



TLBP1



TLBP2

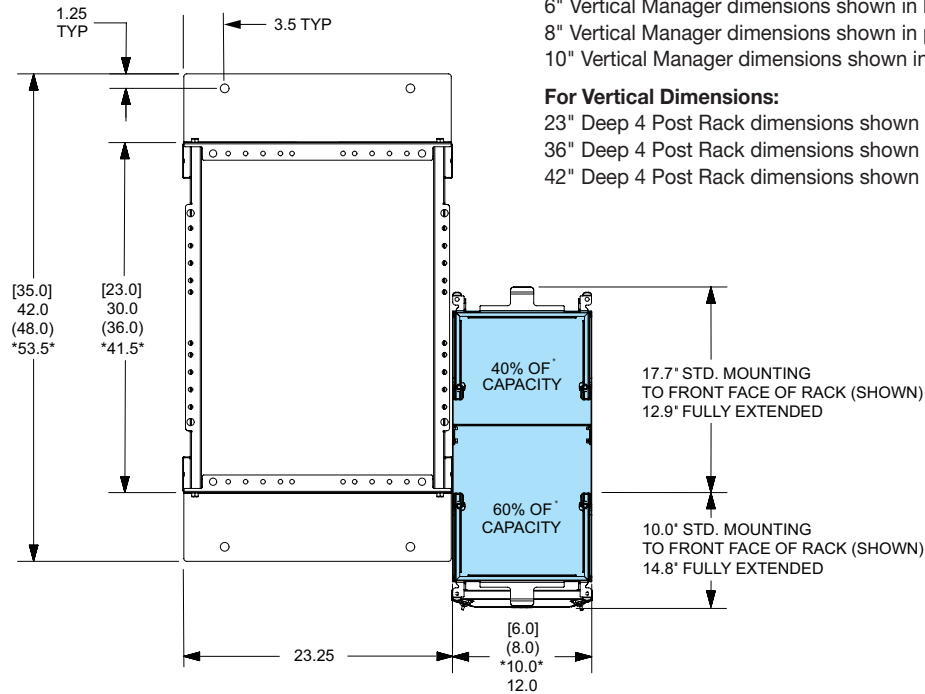
Part Number	Part Description	No. of Rack Spaces‡	Std. Pkg. Qty.
TLBP1S-V	19" (483mm) width for 3/8" cage nut holes.	1	5
TLBP2S-V	19" (483mm) width for 3/8" cage nut holes.	2	5
TLBP1R-V	19" (483mm) width for tapped rails.	1	5
TLBP2R-V	19" (483mm) width for tapped rails.	2	5

‡One rack space = 1.75" (44.45mm).
All product color is black.

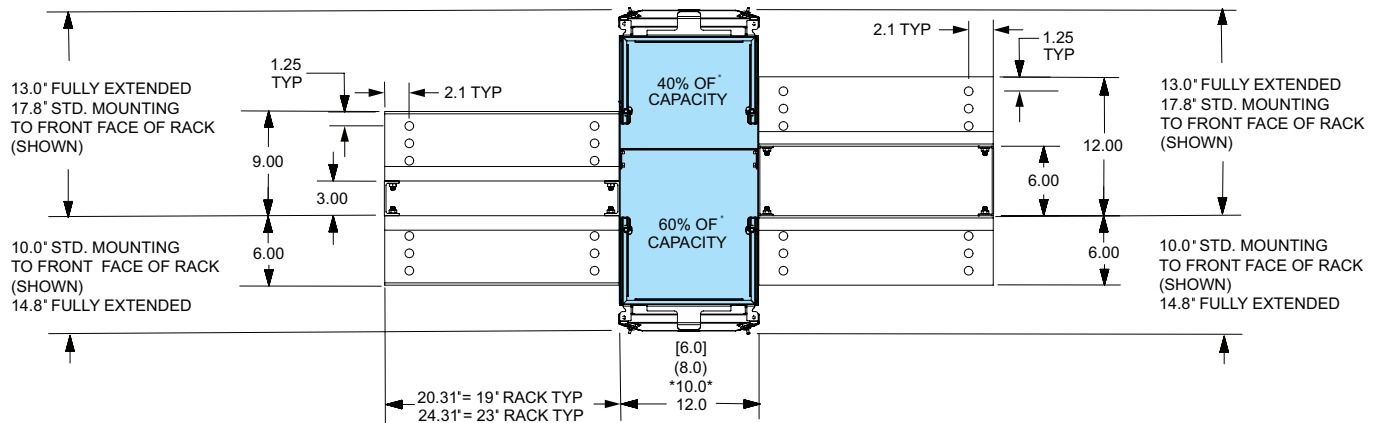
Specifications

- Dual-sided cable managers, having 60% of total cable capacity on one side and 40% on the other, allow optimized capacity placement on either side of the rack
- Cable managers have multiple mounting locations to the side of the rack, allowing optimal cable routing and space utilization
- When using a dual-sided cable manager in an inter-connect network architecture, the 60% side of the cable manager can be orientated towards the patching side of the rack to manage a higher number of patch cords
- When using a dual-sided cable manager in a cross-connect network architecture, the 60% side of the cable manager can be orientated towards the cabling side of the rack to manage a higher number of cables

4 Post Rack



2 Post Rack



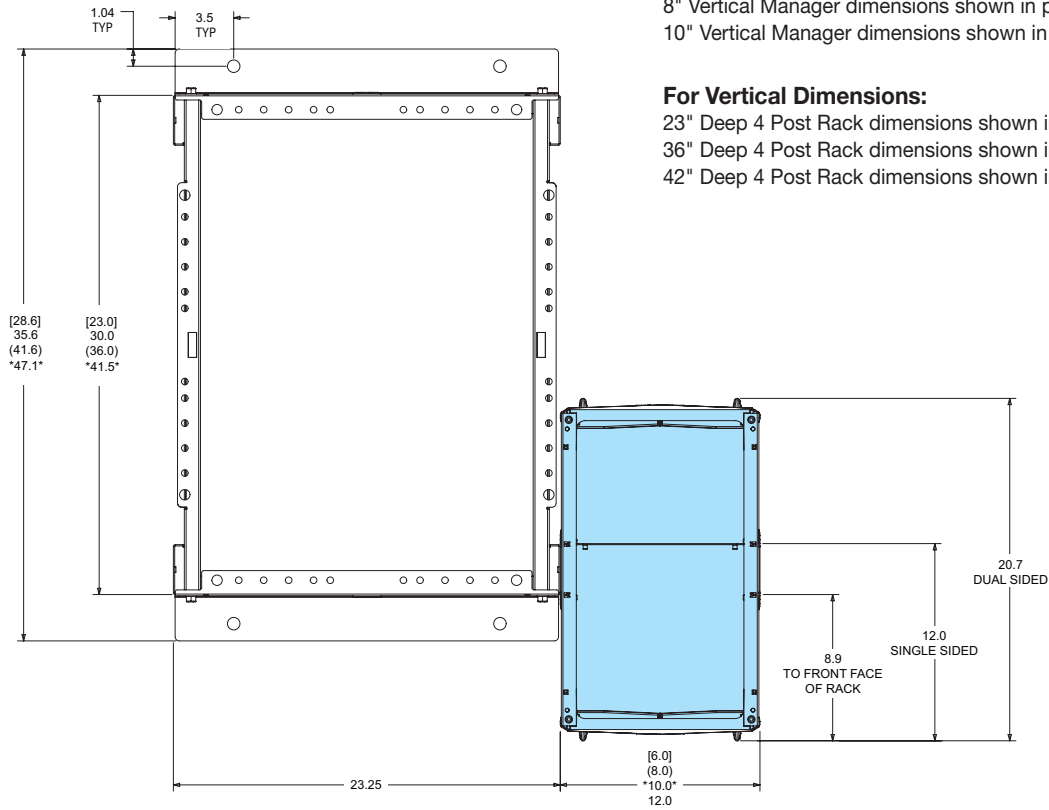
PatchRunner™ 2 Vertical Cable Manager



Specifications

- PatchRunner™ 2 Vertical Cable Managers are specifically designed for cable capacities typically found in telecommunication rooms using medium to large enterprise switches
- Dual-sided cable managers, having 60% of total cable capacity on one side and 40% on the other, allow optimized capacity placement on either side of the rack

4 Post Rack



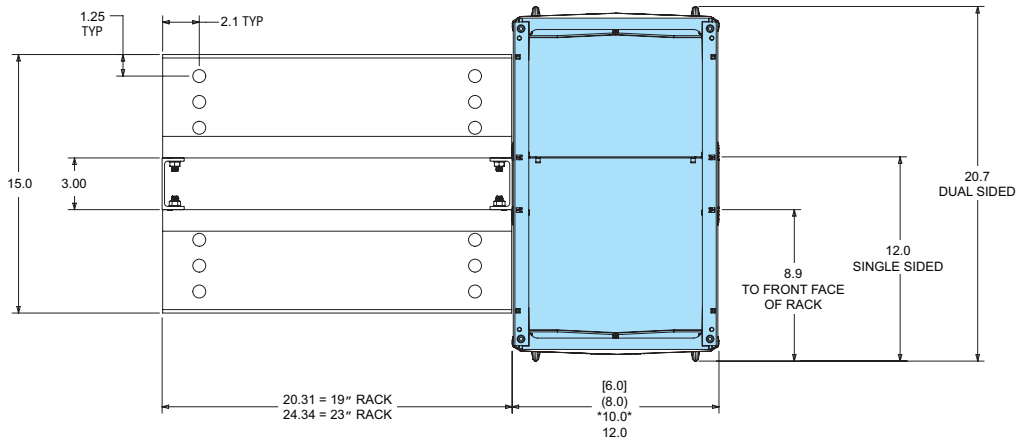
For Horizontal Dimensions:

- 6" Vertical Manager dimensions shown in brackets [...]
- 8" Vertical Manager dimensions shown in parenthesis (...)
- 10" Vertical Manager dimensions shown in Asterisk*...*

For Vertical Dimensions:

- 23" Deep 4 Post Rack dimensions shown in brackets [...]
- 36" Deep 4 Post Rack dimensions shown in parenthesis (...)
- 42" Deep 4 Post Rack dimensions shown in asterisk*...*

2 Post Rack



Cable Capacity Charts (inches)

Product Family	Part Number	Description	Recommended Cable Fill (30%)								Maximum Cable Fill (50%)							
			Front Side								Rear Side							
			Cat. 6A (28 AWG - 0.185")		Cat. 6A (24 AWG - 0.275")		Cat. 6 (28 AWG - 0.150")		Cat. 6 (24 AWG - 0.235")		Cat. 6A (28 AWG - 0.185")		Cat. 6A (24 AWG - 0.275")		Cat. 6 (28 AWG - 0.150")		Cat. 6 (24 AWG - 0.235")	
PR2V PatchRunner™ 2 Vertical Cable Managers	PR2VD06	6" wide	503	839	227	379	765	1276	312	520	304	507	137	229	462	771	188	314
	PR2VFD06	6" wide, front only	503	839	227	379	765	1276	312	520	0	0	0	0	0	0	0	0
	PR2VD08	8" wide	711	1185	321	536	1081	1802	440	734	443	739	200	334	674	1124	274	457
	PR2VFD08	8" wide, front only	711	1185	321	536	1081	1802	440	734	0	0	0	0	0	0	0	0
	PR2VD10	10" wide	918	1531	415	692	1397	2328	569	948	582	971	263	439	886	1477	361	601
	PR2VFD10	10" wide, front only	918	1531	415	692	1397	2328	569	948	0	0	0	0	0	0	0	0
	PR2VD12	12" wide	1126	1876	509	849	1712	2854	697	1163	721	1203	326	544	1098	1830	447	745
	PR2VFD12	12" wide, front only	1126	1876	509	849	1712	2854	697	1163	0	0	0	0	0	0	0	0
	Single PRV Finger																	
PEV PatchRunner™ High Capacity Vertical Cable Managers	PEV6	6" wide	748	1248	338	564	1139	1898	464	773	512	853	231	386	779	1298	317	529
	PEVF6	6" wide, front only	748	1248	338	564	1139	1898	464	773	0	0	0	0	0	0	0	0
	PEV8	8" wide	1035	1726	468	781	1575	2625	641	1069	717	1196	324	541	1091	1819	444	741
	PEVF8	8" wide, front only	1035	1726	468	781	1575	2625	641	1069	0	0	0	0	0	0	0	0
	PEV10	10" wide	1323	2206	599	998	2013	3355	820	1367	921	1536	417	695	1402	2337	571	952
	PEVF10	10" wide, front only	1323	2206	599	998	2013	3355	820	1367	0	0	0	0	0	0	0	0
	PEV12	12" wide	1611	2685	729	1215	2451	4085	998	1664	1127	1878	510	850	1714	2857	698	1164
	PEVF12	12" wide, front only	1611	2685	729	1215	2451	4085	998	1664	0	0	0	0	0	0	0	0
	Single PEV Finger																	

Note: Door brackets and cable slack spools reduce cable capacity.

WMP PatchLink™ Horizontal Cable Managers	WMP1E	2RU, front/rear	84	141	38	63	129	215	52	87	118	197	53	89	179	299	73	122
	WMPF1E	2RU, front only	84	141	38	63	129	215	52	87	0	0	0	0	0	0	0	0
	WMPSE	1RU, front/rear	39	65	17	29	59	99	24	40	70	117	31	53	106	178	43	72
	WMPFSE	1RU, front only	39	65	17	29	59	99	24	40	0	0	0	0	0	0	0	0

Note: Rear section may be partially blocked by rack posts.

NM NetManager™ High Capacity Horizontal Cable Managers	NM1	1RU, front/rear	36	61	16	27	56	93	22	38	45	76	20	34	69	116	28	47
	NMF1	1RU, front only	36	61	16	27	56	93	22	38	0	0	0	0	0	0	0	0
	NM2	2RU, front/rear	109	182	49	82	166	277	67	112	123	206	56	93	188	314	76	127
	NMF2	2RU, front only	109	182	49	82	166	277	67	112	0	0	0	0	0	0	0	0
	NM3	3RU, front/rear	193	321	87	145	293	489	119	199	245	409	111	185	373	622	152	253
	NMF3	3RU, front only	193	321	87	145	293	489	119	199	0	0	0	0	0	0	0	0
	NM4	4RU, front/rear	271	452	122	204	412	687	168	280	356	593	161	268	541	902	220	367
	NMF4	4RU, front only	271	452	122	204	412	687	168	280	0	0	0	0	0	0	0	0

Note: Rear section may be partially blocked by rack posts.

CMPH Open-Access™ Horizontal Cable Managers	CMPH1	1RU, front/rear	25	42	11	19	39	65	15	26	32	53	14	24	49	82	20	33
	CMPHF1	1RU, front only	25	42	11	19	39	65	15	26	0	0	0	0	0	0	0	0
	CMPH2	2RU, front/rear	59	98	26	44	89	149	36	61	120	200	54	90	183	305	74	124
	CMPHF2	2RU, front only	59	98	26	44	89	149	36	61	0	0	0	0	0	0	0	0
	CMPHH2	2RU, front only, larger D-rings	120	200	54	90	183	305	74	124	0	0	0	0	0	0	0	0
	CMPHHF1	1RU, front only, larger D-rings	32	53	14	24	49	82	20	33	0	0	0	0	0	0	0	0

Note: Rear section may be partially blocked by rack posts.

Cable Capacity Charts (metric)



Product Family	Part Number	Description	Recommended Cable Fill (30%)								Maximum Cable Fill (50%)							
			Front Side								Rear Side							
			Cat. 6A (28 AWG - 4,70mm)		Cat. 6A (24 AWG - 6,99mm)		Cat. 6 (28 AWG - 3,81mm)		Cat. 6 (24 AWG - 5,97mm)		Cat. 6A (28 AWG - 4,70mm)		Cat. 6A (24 AWG - 6,99mm)		Cat. 6 (28 AWG - 3,81mm)		Cat. 6 (24 AWG - 5,97mm)	
PR2V PatchRunner™ 2 Vertical Cable Managers	PR2VD06	152mm wide	503	839	227	379	765	1276	312	520	304	507	137	229	462	771	188	314
	PR2VFD06	152mm wide, front only	503	839	227	379	765	1276	312	520	0	0	0	0	0	0	0	0
	PR2VD08	203mm wide	711	1185	321	536	1081	1802	440	734	443	739	200	334	674	1124	274	457
	PR2VFD08	203mm wide, front only	711	1185	321	536	1081	1802	440	734	0	0	0	0	0	0	0	0
	PR2VD10	254mm wide	918	1531	415	692	1397	2328	569	948	582	971	263	439	886	1477	361	601
	PR2VFD10	254mm wide, front only	918	1531	415	692	1397	2328	569	948	0	0	0	0	0	0	0	0
	PR2VD12	305mm wide	1126	1876	509	849	1712	2854	697	1163	721	1203	326	544	1098	1830	447	745
	PR2VFD12	305mm wide, front only	1126	1876	509	849	1712	2854	697	1163	0	0	0	0	0	0	0	0
	Single PRV Finger																	
PEV PatchRunner™ High Capacity Vertical Cable Managers	PEV6	152mm wide	748	1248	338	564	1139	1898	464	773	512	853	231	386	779	1298	317	529
	PEVF6	152mm wide, front only	748	1248	338	564	1139	1898	464	773	0	0	0	0	0	0	0	0
	PEV8	203mm wide	1035	1726	468	781	1575	2625	641	1069	717	1196	324	541	1091	1819	444	741
	PEVF8	203mm wide, front only	1035	1726	468	781	1575	2625	641	1069	0	0	0	0	0	0	0	0
	PEV10	254mm wide	1323	2206	599	998	2013	3355	820	1367	921	1536	417	695	1402	2337	571	952
	PEVF10	254mm wide, front only	1323	2206	599	998	2013	3355	820	1367	0	0	0	0	0	0	0	0
	PEV12	305mm wide	1611	2685	729	1215	2451	4085	998	1664	1127	1878	510	850	1714	2857	698	1164
	PEVF12	305mm wide, front only	1611	2685	729	1215	2451	4085	998	1664	0	0	0	0	0	0	0	0
	Single PEV Finger																	

Note: Door brackets and cable slack spools reduce cable capacity.

WMP PatchLink™ Horizontal Cable Managers	WMP1E	2RU, front/rear	84	141	38	63	129	215	52	87	118	197	53	89	179	299	73	122
	WMPF1E	2RU, front only	84	141	38	63	129	215	52	87	0	0	0	0	0	0	0	0
	WMPSE	1RU, front/rear	39	65	17	29	59	99	24	40	70	117	31	53	106	178	43	72
	WMPFSE	1RU, front only	39	65	17	29	59	99	24	40	0	0	0	0	0	0	0	0

Note: Rear section may be partially blocked by rack posts.

NM NetManager™ High Capacity Horizontal Cable Managers	NM1	1RU, front/rear	36	61	16	27	56	93	22	38	45	76	20	34	69	116	28	47
	NMF1	1RU, front only	36	61	16	27	56	93	22	38	0	0	0	0	0	0	0	0
	NM2	2RU, front/rear	109	182	49	82	166	277	67	112	123	206	56	93	188	314	76	127
	NMF2	2RU, front only	109	182	49	82	166	277	67	112	0	0	0	0	0	0	0	0
	NM3	3RU, front/rear	193	321	87	145	293	489	119	199	245	409	111	185	373	622	152	253
	NMF3	3RU, front only	193	321	87	145	293	489	119	199	0	0	0	0	0	0	0	0
	NM4	4RU, front/rear	271	452	122	204	412	687	168	280	356	593	161	268	541	902	220	367
	NMF4	4RU, front only	271	452	122	204	412	687	168	280	0	0	0	0	0	0	0	0

Note: Rear section may be partially blocked by rack posts.

CMPH Open-Access™ Horizontal Cable Managers	CMPH1	1RU, front/rear	25	42	11	19	39	65	15	26	32	53	14	24	49	82	20	33
	CMPHF1	1RU, front only	25	42	11	19	39	65	15	26	0	0	0	0	0	0	0	0
	CMPH2	2RU, front/rear	59	98	26	44	89	149	36	61	120	200	54	90	183	305	74	124
	CMPHF2	2RU, front only	59	98	26	44	89	149	36	61	0	0	0	0	0	0	0	0
	CMPHH2	2RU, front only, larger D-rings	120	200	54	90	183	305	74	124	0	0	0	0	0	0	0	0
	CMPHHF1	1RU, front only, larger D-rings	32	53	14	24	49	82	20	33	0	0	0	0	0	0	0	0

Note: Rear section may be partially blocked by rack posts.



PANDUIT®

**Panduit Corp.
World Headquarters
Tinley Park, IL 60487**

**cs@panduit.com
US and Canada: 800.777.3300
Europe, Middle East, and Africa:
44.20.8601.7200
Latin America: 52.33.3777.6000
Asia Pacific: 65.6305.7575**

www.panduit.com