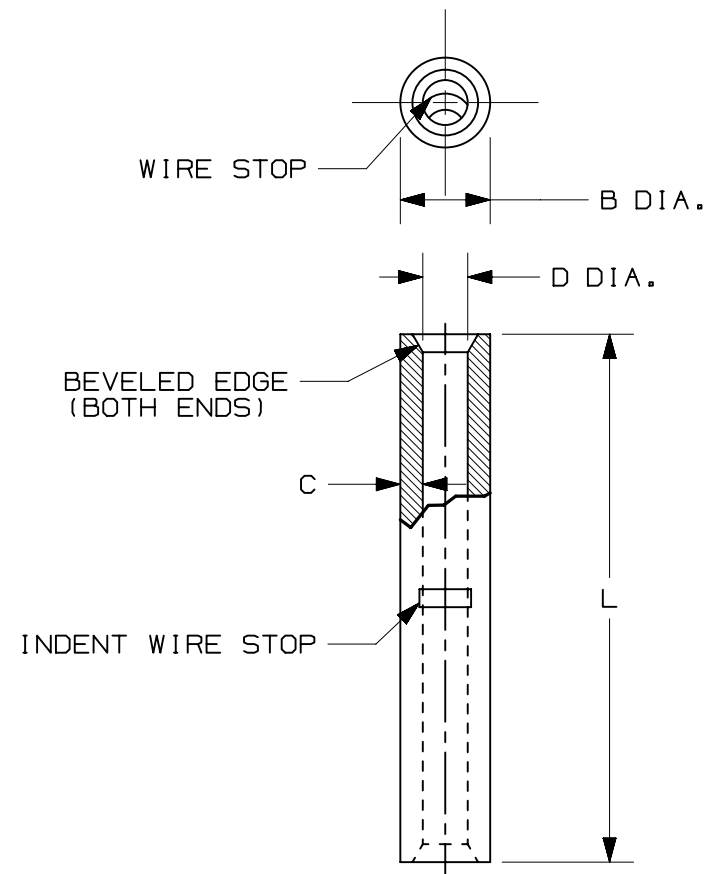


THIS COPY IS PROVIDED ON A RESTRICTED BASIS AND IS NOT TO BE USED IN ANY WAY DETRIMENTAL TO THE INTERESTS OF PANDUIT CORP.

PANDUIT PART #	WIRE RANGE AWG [mm <sup>2</sup> ]	DIMENSIONS in. [mm]			
		L ± .03 [0,76]	B DIA. ± .01 [0,25]	C ± .03 [0,76]	B DIA. ± .01 [0,25]
BS22	#26-22 [0,25-0,5]	.47 [11,9]	.08 [2,0]	.02 [0,5]	.04 [1,0]

- NOTES:
- USED FOR:
    - #26-22 [0,25-0,5mm<sup>2</sup>] SOLID OR STRANDED COPPER WIRE
    - 302°F [150°C] MAX. TEMPERATURE RATING
  - INSTALLATION TOOLS:
    - PANDUIT APPROVED:  
CT-100A, CT-200, CT-160, CT-260
  - WIRE STRIP LENGTH: 9/32 <sup>+1/32</sup> [7,1 <sup>+0,8</sup>]
  - MATERIAL:
    - STAMPING: .02 [0,5] COPPER, TIN PLATED
  - SEE [www.panduit.com](http://www.panduit.com) FOR PACKAGE QUANTITIES INDICATED BY PART NUMBER SUFFIX
  - DIMENSIONS IN BRACKETS ARE METRIC EQUIVALENT



REV	DATE	BY	CHK	APR	DESCRIPTION	ECN
07	10.20.14	JHNU	JHNU	RGB	REMOVED UL & CSA FROM NOTE 2	N41336BA-A41336
06	09.06.12	JBN	LCA	VMB	REVISED NOTES. ADDED METRIC EQUIVALENTS. UPDATED DRAWING TO CURRENT STANDARD.	A41336

TITLE		<b>BUTT SPLICE, NON- INSULATED #26-22</b>		
		CUSTOMER DRAWING		
ITEM REVISION NAME		N41336BA/07		
DATASET FILE NAME		N41336BA_DC/07A		
UNLESS OTHERWISE SPECIFIED, DIMENSIONAL TOLERANCES ARE: IN [mm]		<b>PANDUIT</b>		
.x ± .1 [2.54]      .xxx ± .005 [.13] .xx ± .01 [.25]      ANGLES ± 5°				
DRAWN BY		DATE	CHK	SCALE
DAW		-	-	N.T.S
DRAWING NUMBER:		<b>A41336</b>		
SHT 1 OF 1		<b>A</b>		

D10100DA/15