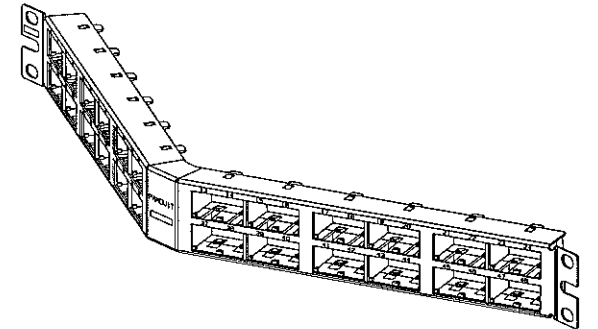
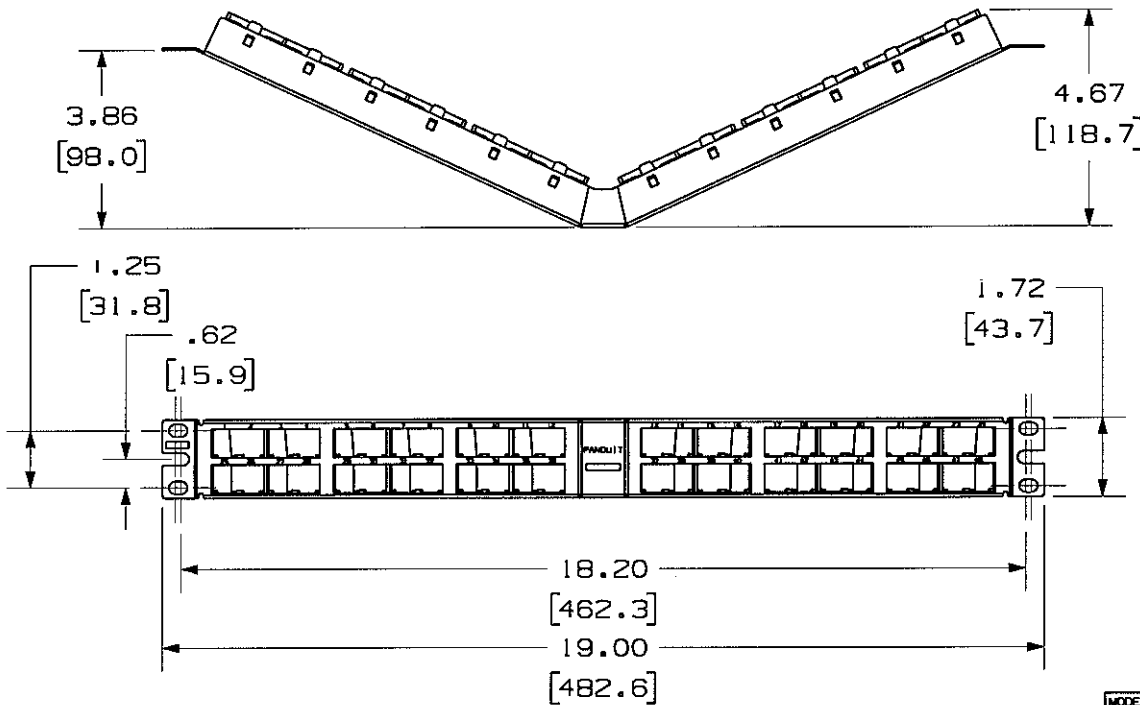


THIS COPY IS PROVIDED ON A RESTRICTED BASIS AND IS NOT TO BE USED IN ANY WAY DETRIMENTAL TO THE INTERESTS OF PANDUIT CORP.

PANDUIT P/N	WEIGHT
CPPA48HDWBLY	6.88 LB/10 PCS (3215.2.0 g/10 PCS)

- NOTES:
- SEE CURRENT CATALOG FOR ADDITIONAL PART NUMBER SUFFIXES TO INDICATE COLOR AND OR PACKAGE QUANTITY.
 - SEE CATALOG FOR COMPLETE LIST OF PARTS APPLICABLE FOR USE WITH THIS PART.
 - PACKAGE CONTENTS:
 - (1) -48 PORT ANGLED STAMPING
 - (6) -8 POSITION FACEPLATE (ASSEMBLED TO PANEL)
 - (1) -SCREW KIT (INCLUDES FOUR #12-24 SCREWS)
 - (1) -SCREW KIT (INCLUDES FOUR M6 SCREWS)
 - DIMENSIONS IN [] ARE IN METRIC.



MODEL FILENAME	M01598AA_CPPA48HD_ASMBL_01.PRT	SIZE	A
DRAWING FILENAME	M02479DB_DC82_00A.PRT		

MINI-COM 48 PORT ANGLED HIGH DENSITY MODULAR PATCH PANEL CUSTOMER DRAWING

REV	DATE	BY	CHK	DESCRIPTION	ECN	R	CUST	SUP	OTH
R	8-8-06	JsP	MJD	RELEASED TO PRODUCTION	02479-082				

<p>PANDUIT™ CORP. TINLEY PARK, ILL 60477</p>	I.I. NUMBER	N/A
	PRODUCT SPEC	N/A
<p>THIRD ANGLE PROJECTION</p>	WORK INSTRUCTION	N/A
	SCALE	NONE
DRAWN BY JsP	MATERIAL	PART NO. CPPA48HDWBLY
DATE 8-8-06	STAMPING: 20 GAGE C.R.S. FACEPLATE: ABS	DRAWING NO. 02479-082