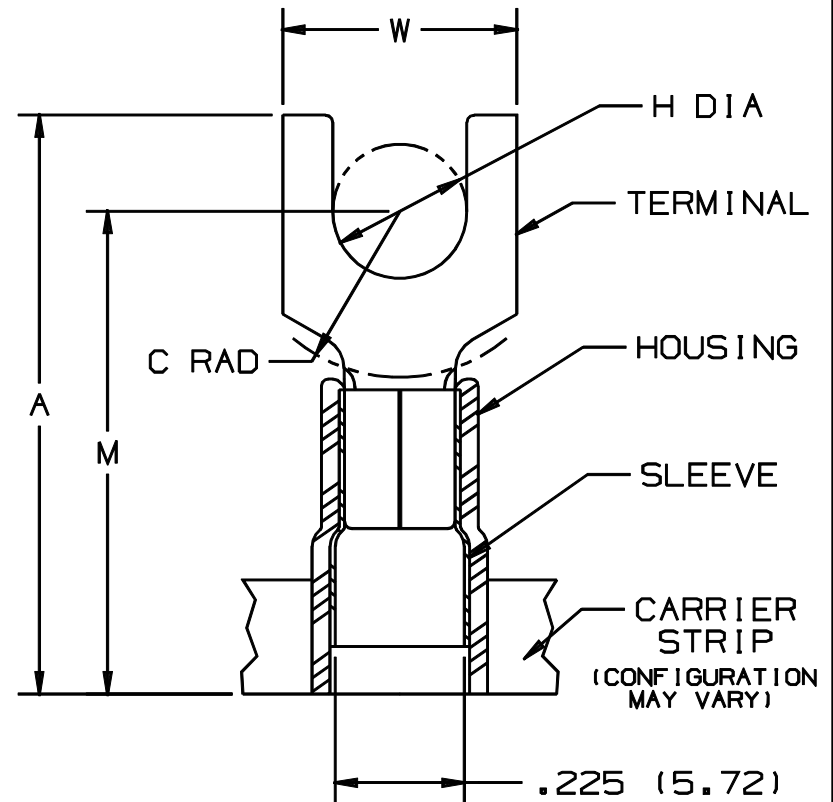


THIS COPY IS PROVIDED ON A RESTRICTED BASIS AND IS NOT TO BE USED IN ANY WAY DETRIMENTAL TO THE INTERESTS OF PANDUIT CORP.

PANDUIT PART NUMBER	STUD SIZE	DIMENSIONS in.				
		A $\pm .040$	W $\pm .010$	C $\pm .020$	M $\pm .040$	H $\pm .010$
PN10-6F-2K	#6	1.00 (25.40)	.31 (7.87)	.24 (6.10)	.81 (20.57)	.15 (3.81)
PN10-8F-2K	#8	1.03 (26.16)	.37 (9.40)	.24 (6.10)	.81 (20.57)	.17 (4.32)
PN10-10F-2K	#10	1.04 (26.42)	.37 (9.40)	.24 (6.10)	.81 (20.57)	.20 (5.08)
PN10-14F-2K	1/4"	1.14 (28.96)	.49 (12.45)	.32 (8.13)	.90 (22.86)	.27 (6.86)



NOTES :

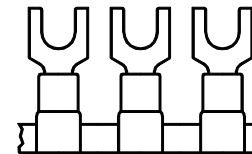
- UL LISTED AND CSA CERTIFIED FOR :
  - 600 V MAX. VOLTAGE RATING
  - 221°F (105°C) MAX. TEMP. RATING
  - #12-10 AWG (2.5-6.0 mm<sup>2</sup>) SOLID OR STRANDED, COPPER WIRE
- PACKAGE QTY. : 2K = 2000 PCS.  
CONTINUOUS MOLDED CARRIER STRIP
- MATERIAL :
  - STAMPING - .04" THK COPPER, TIN PLATED
  - HOUSING - YELLOW NYLON
  - SLEEVE - BRASS, TIN PLATED
- DIMENSIONS IN BRACKETS ARE IN MILLIMETERS
- INSTALLATION TOOLS :
  - PRESSES - CP-851, CP-860, CP-861
  - APPLICATOR - CA-800
  - DIE INSERTS - CD-800-3
- WIRE STRIP LENGTH:  $9/32^{+1/32}$  (7.1<sup>+0.8</sup><sub>-0</sub>)



LISTED  
587H  
E52164



CERTIFIED  
LR31212



.130 (3.30)  
MIN. WIRE  
INSUL. DIA.

A41094\_05

05	12/00	ED		FILESPEC WAS: N41094AA_PCD_04	08925			<p>TINLEY PARK, ILLINOIS</p> <p>TERMO 3PC, CONTINUOUSLY MOLDED NYLON INSULATED, 12-10 BARREL, FORKS</p>
04	5/99	ED		UPDATED "A" & "M" DIM.S, AND MODIFIED DIMENSIONAL TOLERANCES	07670			
03	12/96	JAMB	RLS	ADDED DIM., "MIN. WIRE INSUL. DIA."	05389	LA	DBH	
REV	DATE	BY	CHK	DESCRIPTION	ECN	CUST	PM	DRAWN BY: JMV Ck'D: LA SCALE: NONE DRAWING NO.: A41094