

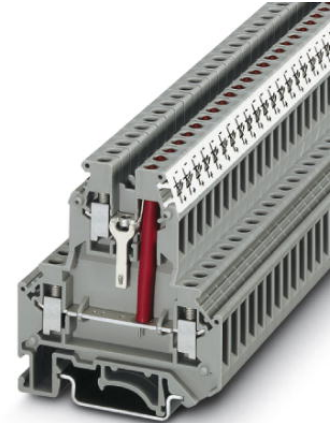


Extract from the online catalog

UKK 5-LA230

Order No.: 2791359

The illustration shows version UKK 5-LA 24 RD/U-O



<http://eshop.phoenixcontact.de/phoenix/treeViewClick.do?UID=2791359>

Feed-through modular terminal block, Connection type: Screw connection, Cross section: 0.2 mm² - 4 mm², AWG: 24 - 12, Nominal current: 32 A, Nominal voltage: 500 V, Length: 56 mm, Width: 6.2 mm, Color: gray, Assembly: NS 35/7,5, NS 35/15, NS 32

| Commercial data | |
|--------------------------|--------------------|
| GTIN (EAN) | 4017918072476 |
| sales group | A210 |
| Pack | 50 pcs. |
| Customs tariff | 85369010 |
| Weight/Piece | 0.01517 KG |
| Catalog page information | Page 391 (CL-2009) |

Product notes

WEEE/RoHS-compliant since:
08/01/2006



<http://www.download.phoenixcontact.com>
Please note that the data given here has been taken from the online catalog. For comprehensive information and data, please refer to the user documentation. The General Terms and Conditions of Use apply to Internet downloads.

Technical data

| General | |
|-----------------------|------|
| Number of levels | 2 |
| Number of connections | 3 |
| Color | gray |

UKK 5-LA230 Order No.: 2791359

<http://eshop.phoenixcontact.de/phoenix/treeViewClick.do?UID=2791359>

| | |
|------------------------------------|----|
| Insulating material | PA |
| Inflammability class acc. to UL 94 | V0 |

Dimensions

| | |
|------------------|---------|
| Width | 6.2 mm |
| Length | 56 mm |
| Height NS 35/7,5 | 62 mm |
| Height NS 35/15 | 69.5 mm |
| Height NS 32 | 67 mm |

Technical data

| | |
|--------------------------------|---|
| Maximum load current | 32 A (with 4 mm ² conductor cross section) |
| Rated surge voltage | 6 kV |
| Pollution degree | 3 |
| Surge voltage category | III |
| Insulating material group | I |
| Nominal current I _N | 32 A |
| Nominal voltage U _N | 500 V (Data is based on the dielectric strength of adjacent terminal blocks or of the DINg rail.) |

Connection data

| | |
|--|----------------------|
| Conductor cross section solid min. | 0.2 mm ² |
| Conductor cross section solid max. | 4 mm ² |
| Conductor cross section stranded min. | 0.2 mm ² |
| Conductor cross section stranded max. | 4 mm ² |
| Conductor cross section AWG/kcmil min. | 24 |
| Conductor cross section AWG/kcmil max | 12 |
| Conductor cross section stranded, with ferrule without plastic sleeve min. | 0.25 mm ² |
| Conductor cross section stranded, with ferrule without plastic sleeve max. | 4 mm ² |
| Conductor cross section stranded, with ferrule with plastic sleeve min. | 0.25 mm ² |
| Conductor cross section stranded, with ferrule with plastic sleeve max. | 2.5 mm ² |
| 2 conductors with same cross section, solid min. | 0.2 mm ² |
| 2 conductors with same cross section, solid max. | 1.5 mm ² |
| 2 conductors with same cross section, stranded min. | 0.2 mm ² |

UKK 5-LA230 Order No.: 2791359

<http://eshop.phoenixcontact.de/phoenix/treeViewClick.do?UID=2791359>

| | |
|---|----------------------|
| 2 conductors with same cross section, stranded max. | 1.5 mm ² |
| 2 conductors with same cross section, stranded, ferrules without plastic sleeve, min. | 0.25 mm ² |
| 2 conductors with same cross section, stranded, ferrules without plastic sleeve, max. | 1.5 mm ² |
| 2 conductors with same cross section, stranded, TWIN ferrules with plastic sleeve, min. | 0.5 mm ² |
| 2 conductors with same cross section, stranded, TWIN ferrules with plastic sleeve, max. | 1.5 mm ² |
| Cross-section with insertion bridge, solid max. | 4 mm ² |
| Cross-section with insertion bridge, stranded max. | 2.5 mm ² |
| Type of connection | Screw connection |
| Stripping length | 8 mm |
| Internal cylindrical gage | A4 |
| Screw thread | M3 |
| Tightening torque, min | 0.6 Nm |
| Tightening torque max | 0.8 Nm |

Certificates / Approvals



Certification CUL, UL

CUL

| | |
|--------------------------------|-------|
| Nominal voltage U _N | 600 V |
| Nominal current I _N | 20 A |
| AWG/kcmil | 26-10 |

UL

| | |
|--------------------------------|-------|
| Nominal voltage U _N | 600 V |
| Nominal current I _N | 20 A |
| AWG/kcmil | 26-10 |

UKK 5-LA230 Order No.: 2791359
<http://eshop.phoenixcontact.de/phoenix/treeViewClick.do?UID=2791359>

Address

PHOENIX CONTACT Deutschland GmbH
Flachmarktstr. 8
32825 Blomberg, Germany
Phone +49 5235 3 12000
Fax +49 5235 3 41200
<http://www.phoenixcontact.de>



© 2010 Phoenix Contact
Technical modifications reserved;

onlinecomponents.com